

Converting Colors

Android(4294144408)

Have a look what the booklet for
Android(4294144408) contains.

Android(4294144408)	3
<i>Conversions</i>	4
<i>Details</i>	6
<i>Harmonies</i>	11
<i>Previews</i>	23
<i>Color Blindness Simulation</i>	26
<i>CSS Examples</i>	29

Color

Android(4294144408)

Conversions

Conversions Part 1

Format	Color
Hex	F37198
RGB	243, 113, 152
RGB Percent	95%, 44%, 60%
CMY	0.0471, 0.5569, 0.4039
CMYK	0.00, 0.53, 0.37, 0.05
HSL	342°, 84%, 70%
HSV	342°, 53%, 95%
XYZ	48.5348, 33.1319, 33.5428
YIQ	156.3160, 64.9610, 39.6890

Conversions

Conversions Part 2

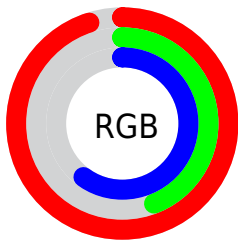
Format	Color
RYB	243, 113, 152
Decimal	15954328
CIELab	64.27, 53.66, 3.32
CIElCh	64, 53.767, 3.537
Yxy	33.1319, 0.4213, 0.2876
Android (android.graphics.Color)	4294144408 (0xFFFF37198)
YUV	156.3160, -2.1278, 76.0219
Hunter-Lab	57.5604, 49.7802, 5.7415

Details

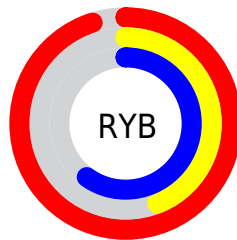
The Android color **4294144408** is a light color, and the websafe version is hex **FF6699**. A complement of this color would be **4285658060**, and the grayscale version is **4288453788**.

A 20% lighter version of the original color is **4294944974**, and **4290198117** is the 20% darker color. If you saturate the color by 10%, you get **4294138247**, and if you desaturate by 10%, it is **4294150569**.

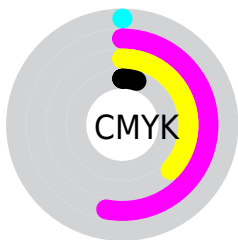
Distribution



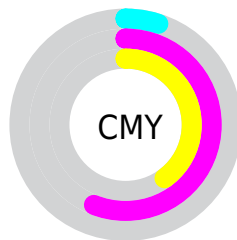
- Red (95%)
- Green (44%)
- Blue (60%)



- Red (95%)
- Yellow (44%)
- Blue (60%)



- Cyan (0%)
- Magenta (53%)
- Yellow (37%)
- Black (5%)



- Cyan (5%)
- Magenta (56%)
- Yellow (40%)

Brightness & Saturation Gradients

These gradients show how the Android color 4294144408 changes by changing the brightness by 10 percent. The first figure shows a shift by +10% for each color and the second figure -10%.

Similar to the brightness gradients but the following saturation gradients show a change of the Android color 4294144408 by changing the saturation by 10% instead.

 4294144408

 4294144408

4294967295

 4292171390

 4294944974

 4290198117

 4294952426

 4288289357

 4294959871

 4286382135

 4284547106

 4282777611

 4280942593

 4278190080

 4294144408

 4294144408

 4294138247

 4294150569

 4294131830

 4294156986

 4294125669

 4294163147

 4294119508

 4294169308

 4294115401

 4294175469

 4294180862

 4294180863

Harmonies

Analogous

The Analogous color harmony consists of three colors that are next to each other on the color wheel.



4292573895



4294144408



4293949545

Triad

The Triadic color harmony groups three colors that are evenly spaced from another and form a triangle on the color wheel.



4294144408



4286621767



4278234353

Complementary

The Complementary color scheme is a pair of colors which are on the opposite of each other on the color wheel.



4294144408



4285658060

Split Complementary

Split-complementary colors differ from the complementary color scheme. The scheme consists of three colors, the original color and two neighbors of the complement color.



4278235855



4294144408



4281905263

Square

The Square scheme is like the rectangle color scheme, but the four colors are evenly spaced on the color wheel.



4294144408



4289829686



4278236064



4282753020

Rectangle

The Rectangle color scheme consists of four colors that form a rectangle on the color wheel.



4294144408



4293034832



4278236064



4278235112

Sweetspot

The Sweet Spot groups the original color and five complimentary colors.



4294144408



4294956770



4291588595



4286605167



4278190080



4286611584

Same Dimension

The Same Dimension uses a secret algorithm to generate beautiful new colors.



4294144408



4294925453



4294151025



4286213746



4290379832



4282056722

Inverse Universe

The Inverse Universe completely reimagines the original color for something new.



4294144408



4294925453



4285651443



4286213746



4290379832



4282056722

Previews

White Background



This preview shows how the Android color 4294144408 looks on a white background.

Color Contrast Check

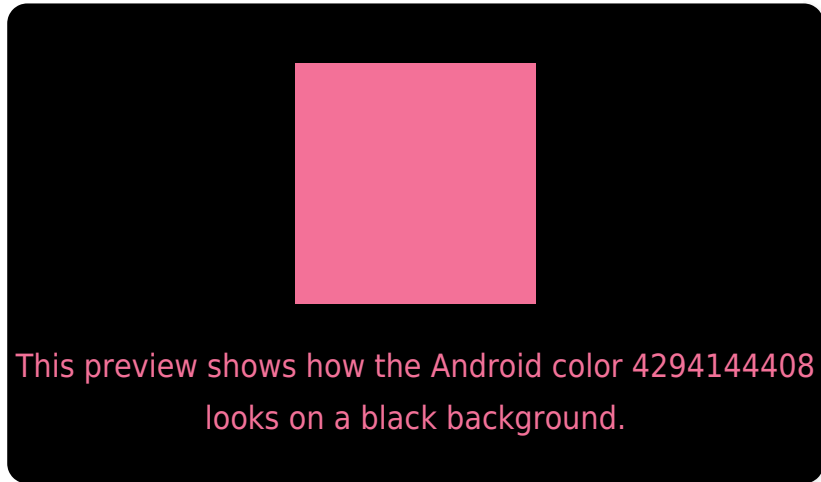
Large Text (above 18pt) WCAG AA × Fail

Any Text WCAG AA × Fail

Large Text (above 18pt) WCAG AAA × Fail

Any Text WCAG AAA × Fail

Black Background



Color Contrast Check

Large Text (above 18pt) WCAG AA ✓ Pass

Any Text WCAG AA ✓ Pass

Large Text (above 18pt) WCAG AAA ✓ Pass

Any Text WCAG AAA ✓ Pass

If you want to check with other color combinations, try the [Color Contrast Checker](#).

Android 4294144408 Background



This preview shows how black text looks on a background with the Android color 4294144408.



This preview shows how white text looks on a background with the Android color 4294144408.

Color Blindness Simulation

Color vision deficiency is a very complex topic, and I could not describe the different causes any better than Wikipedia does, so if you want to learn more, you should check out their [article about color blindness](#).

Dichromacy

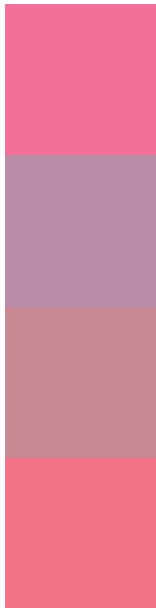


Original Color
4294144408

Protanopia
4288256945

Deuteranopia
4289697682

Trichromacy



Original Color
4294144408

Protanomaly
4290415784

Deuteranomaly
4291332500

Tritanomaly
4294079623

Monochromacy



Original Color
4294144408

Achromatopsia
4288453788

Achromatomaly
4290546843

CSS Examples

Text

The CSS property to change the color of the text to Android 4294144408 is called "color". The color property can be set on classes, ids or directly on the HTML element.

This example shows how text in the color `rgb(243, 113, 152)` looks like.

```
.text, #text, p{  
    color:rgb(243, 113, 152)  
}
```

If you want to add a text shadow in that color use the text-shadow property, you can generate a text shadow directly with our [CSS Text Shadow Generator](#).

Here you see how black text with a 4 pixel rgb(243, 113, 152) colored shadow looks like.

```
.shadow{ text-shadow: 4px 4px 2px rgb(243, 113, 152) }
```

Border

The CSS property to change the border of an element to Android 4294144408 is called "border". The border property can be set on classes, ids or directly on the HTML element.

This example shows the color as border, it can be applied via the CSS property "border" or "border-color".

```
.border, #border, table{ border:4px solid rgb(243, 113, 152) }
```

If only the border color should be changed use the property `border-color`.

```
.border{ border-color:rgb(243, 113, 152) }
```

If you want to add a box shadow in that color use:

Here you see how a box with a 4 pixel `rgb(243, 113, 152)` colored shadow looks like.

```
.boxshadow{ -moz-box-shadow:4px 4px 4px  
4px rgb(243, 113, 152); -webkit-box-  
shadow:4px 4px 4px 4px rgb(243, 113, 152);  
box-shadow:4px 4px 4px 4px rgb(243, 113,  
152) }
```

Background

The CSS property to change the background color of an element to Android 4294144408 is called "background". The background property can be set on classes, ids or directly on the HTML element.

```
.background, #background, body{  
background: rgb(243, 113, 152) }
```

If only the background color should be changed can be used:

```
.background{ background-color: rgb(243,  
113, 152) }
```

This example shows the color as background, it is applied via the CSS property "background".

To optimize and compress your CSS code, you can use our [online CSS compressor and optimizer](#) based on csstidy. If you want to create a linear or radial gradient as background or border, check our [CSS Gradient Generator](#).

Hey! You found this booklet interesting? Support Converting Colors with the new Membership Option!

The pro membership hides all ads, plus gives you double the colors in the color bucket, and more awesome pro features!

[Learn more, Memberships starting at \\$2.50/m!](#)

**Follow me
on Twitter!**

@ConvertingColor