

Converting Colors

Android(4294144644)

Have a look what the booklet for
Android(4294144644) contains.

Android(4294144644)	3
<i>Conversions</i>	4
<i>Details</i>	6
<i>Harmonies</i>	11
<i>Previews</i>	23
<i>Color Blindness Simulation</i>	26
<i>CSS Examples</i>	29

Color

Android(4294144644)

Conversions

Conversions Part 1

Format	Color
Hex	F37284
RGB	243, 114, 132
RGB Percent	95%, 45%, 52%
CMY	0.0471, 0.5529, 0.4824
CMYK	0.00, 0.53, 0.46, 0.05
HSL	352°, 84%, 70%
HSV	352°, 53%, 95%
XYZ	47.1443, 32.7553, 25.6674
YIQ	154.6230, 71.1060, 32.9460

Conversions

Conversions Part 2

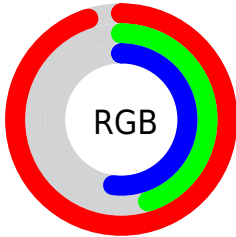
Format	Color
R _Y B	243, 114, 132
Decimal	15954564
CIE Lab	63.96, 51.13, 14.32
CIE LCh	64, 53.094, 15.644
Yxy	32.7553, 0.4466, 0.3103
Android (android.graphics.Color)	4294144644 (0xFFFF37284)
YUV	154.6230, -11.1531, 77.5066
Hunter-Lab	57.2322, 46.8808, 13.4723

Details

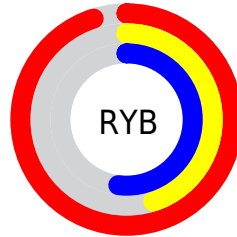
The Android color **4294144644** is a light color, and the websafe version is hex **CC6666**. A complement of this color would be **4285723617**, and the grayscale version is **4288387995**.

A 20% lighter version of the original color is **4294945209**, and **4290198611** is the 20% darker color. If you saturate the color by 10%, you get **4294138479**, and if you desaturate by 10%, it is **4294150809**.

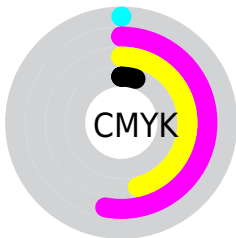
Distribution



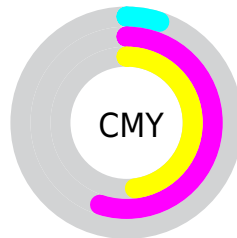
- Red (95%)
- Green (45%)
- Blue (52%)



- Red (95%)
- Yellow (45%)
- Blue (52%)



- Cyan (0%)
- Magenta (53%)
- Yellow (46%)
- Black (5%)



- Cyan (5%)
- Magenta (55%)
- Yellow (48%)

Brightness & Saturation Gradients

These gradients show how the Android color 4294144644 changes by changing the brightness by 10 percent. The first figure shows a shift by +10% for each color and the second figure -10%.

Similar to the brightness gradients but the following saturation gradients show a change of the Android color 4294144644 by changing the saturation by 10% instead.

 4294144644

 4294144644

4294967295

 4292171627

 4294945209

 4290198611

 4294952661

 4288224572

 4294959857

 4286316582

 4284416018

 4282580993

 4280745985

 4278190080

 4294144644

 4294144644

 4294138479

 4294150809

 4294132058

 4294157230

 4294125893

 4294163395

 4294119728

 4294169560

 4294115362

 4294175725

 4294180863

Harmonies

Analogous

The Analogous color harmony consists of three colors that are next to each other on the color wheel.



4293293236



4294144644



4293361241

Triad

The Triadic color harmony groups three colors that are evenly spaced from another and form a triangle on the color wheel.



4294144644



4285049686



4278233078

Complementary

The Complementary color scheme is a pair of colors which are on the opposite of each other on the color wheel.



4294144644



4285723617

Split Complementary

Split-complementary colors differ from the complementary color scheme. The scheme consists of three colors, the original color and two neighbors of the complement color.



4278235102



4294144644



4278235522

Square

The Square scheme is like the rectangle color scheme, but the four colors are evenly spaced on the color wheel.



4294144644



4288585786



4278236083



4285896950

Rectangle

The Rectangle color scheme consists of four colors that form a rectangle on the color wheel.



4294144644



4292119108



4278236083



4278233841

Sweetspot

The Sweet Spot groups the original color and five complimentary colors.



4294144644



4294956764



4292899571



4286605163



4278190080



4286611584

Same Dimension

The Same Dimension uses a secret algorithm to generate beautiful new colors.



4294144644



4294925427



4294156146



4286213744



4290379802



4282056712

Inverse Universe

The Inverse Universe completely reimagines the original color for something new.



4294144644



4294925427



4285712115



4286213744



4290379802



4282056712

Previews

White Background



This preview shows how the Android color 4294144644 looks on a white background.

Color Contrast Check

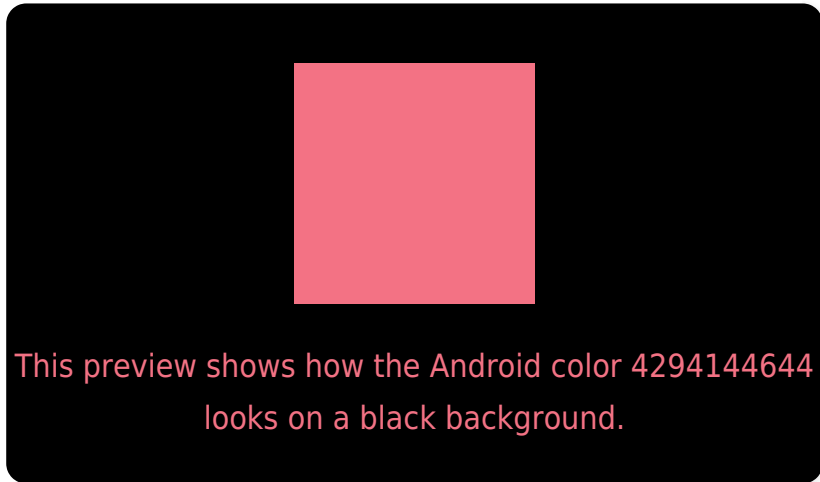
Large Text (above 18pt) WCAG AA × Fail

Any Text WCAG AA × Fail

Large Text (above 18pt) WCAG AAA × Fail

Any Text WCAG AAA × Fail

Black Background



Color Contrast Check

Large Text (above 18pt) WCAG AA ✓ Pass

Any Text WCAG AA ✓ Pass

Large Text (above 18pt) WCAG AAA ✓ Pass

Any Text WCAG AAA ✓ Pass

If you want to check with other color combinations, try the [Color Contrast Checker](#).

Android 4294144644 Background



This preview shows how black text looks on a background with the Android color 4294144644.

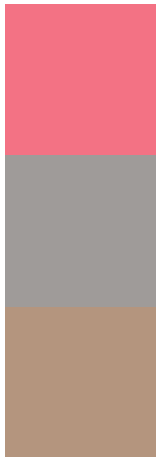


This preview shows how white text looks on a background with the Android color 4294144644.

Color Blindness Simulation

Color vision deficiency is a very complex topic, and I could not describe the different causes any better than Wikipedia does, so if you want to learn more, you should check out their [article about color blindness](#).

Dichromacy

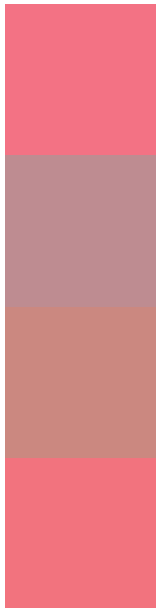


Original Color
4294144644

Protanopia
4288650137

Deuteranopia
4290024830

Trichromacy



Original Color
4294144644

Protanomaly
4290677905

Deuteranomaly
4291528832

Tritanomaly
4294079358

Monochromacy



Original Color
4294144644

Achromatopsia
4288387995

Achromatomaly
4290481299

CSS Examples

Text

The CSS property to change the color of the text to Android 4294144644 is called "color". The color property can be set on classes, ids or directly on the HTML element.

This example shows how text in the color `rgb(243, 114, 132)` looks like.

```
.text, #text, p{  
    color:rgb(243, 114, 132)  
}
```

If you want to add a text shadow in that color use the text-shadow property, you can generate a text shadow directly with our [CSS Text Shadow Generator](#).

Here you see how black text with a 4 pixel rgb(243, 114, 132) colored shadow looks like.

```
.shadow{ text-shadow: 4px 4px 2px rgb(243, 114, 132) }
```

Border

The CSS property to change the border of an element to Android 4294144644 is called "border". The border property can be set on classes, ids or directly on the HTML element.

This example shows the color as border, it can be applied via the CSS property "border" or "border-color".

```
.border, #border, table{ border:4px solid rgb(243, 114, 132) }
```

If only the border color should be changed use the property `border-color`.

```
.border{ border-color:rgb(243, 114, 132) }
```

If you want to add a box shadow in that color use:

Here you see how a box with a 4 pixel `rgb(243, 114, 132)` colored shadow looks like.

```
.boxshadow{ -moz-box-shadow:4px 4px 4px  
4px rgb(243, 114, 132); -webkit-box-  
shadow:4px 4px 4px 4px rgb(243, 114, 132);  
box-shadow:4px 4px 4px 4px rgb(243, 114,  
132) }
```

Background

The CSS property to change the background color of an element to Android 4294144644 is called "background". The background property can be set on classes, ids or directly on the HTML element.

```
.background, #background, body{  
background: rgb(243, 114, 132) }
```

If only the background color should be changed can be used:

```
.background{ background-color: rgb(243,  
114, 132) }
```

This example shows the color as background, it is applied via the CSS property "background".

To optimize and compress your CSS code, you can use our [online CSS compressor and optimizer](#) based on csstidy. If you want to create a linear or radial gradient as background or border, check our [CSS Gradient Generator](#).

Hey! You found this booklet interesting? Support Converting Colors with the new Membership Option!

The pro membership hides all ads, plus gives you double the colors in the color bucket, and more awesome pro features!

[Learn more, Memberships starting at \\$2.50/m!](#)

**Follow me
on Twitter!**

@ConvertingColor