

# Converting Colors

Android(4294165178)

Have a look what the booklet for  
Android(4294165178) contains.

<b>Android(4294165178)</b> .....	3
<b><i>Conversions</i></b> .....	4
<b><i>Details</i></b> .....	6
<b><i>Harmonies</i></b> .....	11
<b><i>Previews</i></b> .....	23
<b><i>Color Blindness Simulation</i></b> .....	26
<b><i>CSS Examples</i></b> .....	29

# **Color**

**Android(4294165178)**

# Conversions

## Conversions Part 1

Format	Color
Hex	F3C2BA
RGB	243, 194, 186
RGB Percent	95%, 76%, 73%
CMY	0.0471, 0.2392, 0.2706
CMYK	0.00, 0.20, 0.23, 0.05
HSL	8°, 70%, 84%
HSV	8°, 23%, 95%
XYZ	65.1169, 61.1834, 54.8319
YIQ	207.7390, 31.7720, 7.9000

# Conversions

## Conversions Part 2

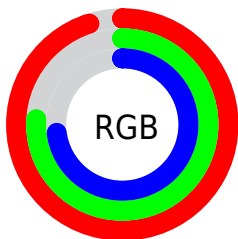
Format	Color
R <sub>Y</sub> B	243, 195, 186
Decimal	15975098
CIE Lab	82.48, 16.31, 10.67
CIE LCh	82, 19.489, 33.194
Yxy	61.1834, 0.3595, 0.3378
Android (android.graphics.Color)	4294165178 (0xFFFF3C2BA)
YUV	207.7390, -10.7173, 30.9239
Hunter-Lab	78.2198, 11.7139, 13.1917

# Details

The Android color `4294165178` is a light color, and the websafe version is hex `FFCCCC`. A complement of this color would be `4290440179`, and the grayscale version is `4291875024`.

A 20% lighter version of the original color is `4294966258`, and `4290415749` is the 20% darker color. If you saturate the color by 10%, you get `4294159778`, and if you desaturate by 10%, it is `4294170578`.

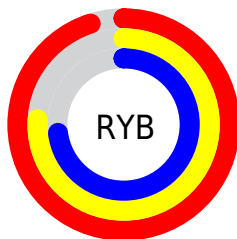
# Distribution



Red (95%)

Green (76%)

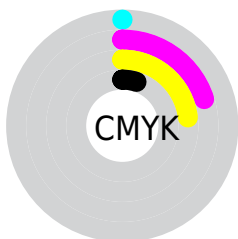
Blue (73%)



Red (95%)

Yellow (76%)

Blue (73%)

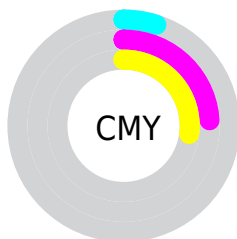


Cyan (0%)

Magenta (20%)

Yellow (23%)

Black (5%)



Cyan (5%)

Magenta (24%)

Yellow (27%)

# Brightness & Saturation Gradients

These gradients show how the Android color 4294165178 changes by changing the brightness by 10 percent. The first figure shows a shift by +10% for each color and the second figure -10%.

Similar to the brightness gradients but the following saturation gradients show a change of the Android color 4294165178 by changing the saturation by 10% instead.



 4294165178

 4294165178

4294967295

 4292257695

 4294966258

 4290415749

 4288574316

 4286863955

 4285153852

 4283444263

 4281865746

 4280483840

 4278190080

 4294165178

 4294165178

 4294159778

 4294170578

 4294154377

 4294175979

 4294148977

 4294180863

 4294143577

 4294138433

 4294133032

 4294127632

 4294124032

# Harmonies

## Analogous

The Analogous color harmony consists of three colors that are next to each other on the color wheel.



4294099404



4294165178



4293576621

# Triad

The Triadic color harmony groups three colors that are evenly spaced from another and form a triangle on the color wheel.



4294165178



4289844924



4290498289

# Complementary

The Complementary color scheme is a pair of colors which are on the opposite of each other on the color wheel.



4294165178



4290440179

# Split Complementary

Split-complementary colors differ from the complementary color scheme. The scheme consists of three colors, the original color and two neighbors of the complement color.



4289189101



4294165178



4288796879

# Square

The Square scheme is like the rectangle color scheme, but the four colors are evenly spaced on the color wheel.



4294165178



4291154606



4288534497



4292069612

# Rectangle

The Rectangle color scheme consists of four colors that form a rectangle on the color wheel.



4294165178



4292922281



4288534497



4290040049

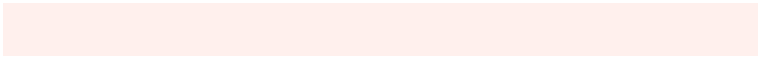


# Sweetspot

The Sweet Spot groups the original color and five complimentary colors.



4294165178



4294963437



4294163179



4286609269



4278190080



4286611584



# Same Dimension

The Same Dimension uses a secret algorithm to generate beautiful new colors.



4294165178



4294951608



4294172346



4286214254



4290386432



4282058752



# Inverse Universe

The Inverse Universe completely reimagines the original color for something new.



4290440179



4290311679



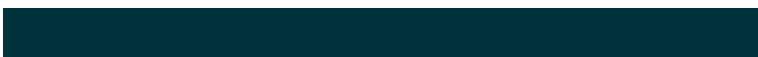
4290433011



4285430138



4278231226

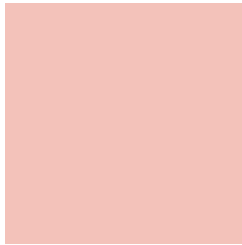


4278202939



# Previews

## White Background



This preview shows how the Android color 4294165178 looks on a white background.

## Color Contrast Check

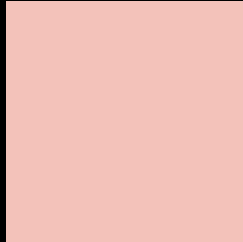
Large Text (above 18pt) WCAG AA × Fail

Any Text WCAG AA × Fail

Large Text (above 18pt) WCAG AAA × Fail

Any Text WCAG AAA × Fail

# Black Background



This preview shows how the Android color 4294165178 looks on a black background.

## Color Contrast Check

Large Text (above 18pt) WCAG AA ✓ Pass

Any Text WCAG AA ✓ Pass

Large Text (above 18pt) WCAG AAA ✓ Pass

Any Text WCAG AAA ✓ Pass

If you want to check with other color combinations, try the [Color Contrast Checker](#).



# Android 4294165178 Background



This preview shows how black text looks on a background with the Android color 4294165178.

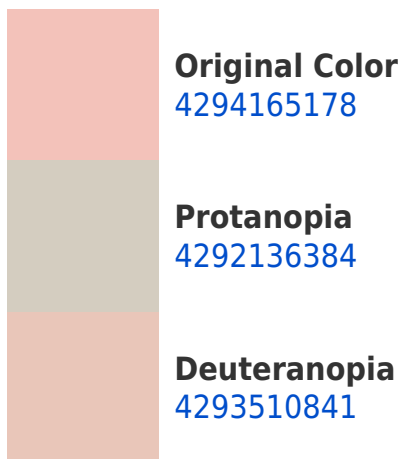


This preview shows how white text looks on a background with the Android color 4294165178.

# Color Blindness Simulation

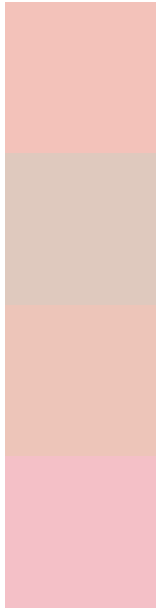
Color vision deficiency is a very complex topic, and I could not describe the different causes any better than Wikipedia does, so if you want to learn more, you should check out their [article about color blindness](#).

## Dichromacy





# Trichromacy



**Original Color**  
4294165178

**Protanomaly**  
4292856254

**Deuteranomaly**  
4293772729

**Tritanomaly**  
4294230215

# Monochromacy



**Original Color**  
4294165178

**Achromatopsia**  
4291875024

**Achromatomaly**  
4292725704

# CSS Examples

## Text

The CSS property to change the color of the text to Android 4294165178 is called "color". The color property can be set on classes, ids or directly on the HTML element.

This example shows how text in the color `rgb(243, 194, 186)` looks like.

```
.text, #text, p{  
    color:rgb(243, 194, 186)  
}
```

If you want to add a text shadow in that color use the text-shadow property, you can generate a text shadow directly with our [CSS Text Shadow Generator](#).

Here you see how black text with a 4 pixel rgb(243, 194, 186) colored shadow looks like.

```
.shadow{ text-shadow: 4px 4px 2px rgb(243, 194, 186) }
```

## Border

The CSS property to change the border of an element to Android 4294165178 is called "border". The border property can be set on classes, ids or directly on the HTML element.

This example shows the color as border, it can be applied via the CSS property "border" or "border-color".

```
.border, #border, table{ border:4px solid rgb(243, 194, 186) }
```

If only the border color should be changed use the property `border-color`.

```
.border{ border-color:rgb(243, 194, 186) }
```

If you want to add a box shadow in that color use:

Here you see how a box with a 4 pixel `rgb(243, 194, 186)` colored shadow looks like.

```
.boxshadow{ -moz-box-shadow:4px 4px 4px 4px rgb(243, 194, 186); -webkit-box-shadow:4px 4px 4px 4px rgb(243, 194, 186); box-shadow:4px 4px 4px 4px rgb(243, 194, 186) }
```

# Background

The CSS property to change the background color of an element to Android 4294165178 is called "background". The background property can be set on classes, ids or directly on the HTML element.

```
.background, #background, body{  
background: rgb(243, 194, 186) }
```

If only the background color should be changed can be used:

```
.background{ background-color: rgb(243,  
194, 186) }
```

This example shows the color as background, it is applied via the CSS property "background".

To optimize and compress your CSS code, you can use our [online CSS compressor and optimizer](#) based on csstidy. If you want to create a linear or radial gradient as background or border, check our [CSS Gradient Generator](#).



Hey! You found this booklet interesting? Support Converting Colors with the new Membership Option!

The pro membership hides all ads, plus gives you double the colors in the color bucket, and more awesome pro features!

**[Learn more, Memberships starting at \\$2.50/m!](#)**

**Follow me  
on Twitter!**

@ConvertingColor