

# Converting Colors

Android(4294172379)

Have a look what the booklet for  
Android(4294172379) contains.

<b>Android(4294172379)</b> .....	3
<b><i>Conversions</i></b> .....	4
<b><i>Details</i></b> .....	6
<b><i>Harmonies</i></b> .....	11
<b><i>Previews</i></b> .....	23
<b><i>Color Blindness Simulation</i></b> .....	26
<b><i>CSS Examples</i></b> .....	29

# **Color**

**Android(4294172379)**

# Conversions

## Conversions Part 1

Format	Color
Hex	F3DEDB
RGB	243, 222, 219
RGB Percent	95%, 87%, 86%
CMY	0.0471, 0.1294, 0.1412
CMYK	0.00, 0.09, 0.10, 0.05
HSL	8°, 50%, 91%
HSV	8°, 10%, 95%
XYZ	75.8696, 76.4117, 77.7680
YIQ	227.9370, 13.4790, 3.5190

# Conversions

## Conversions Part 2

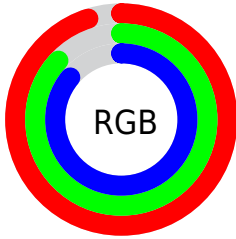
Format	Color
R <sub>Y</sub> B	243, 222, 219
Decimal	15982299
CIE Lab	90.05, 6.70, 4.07
CIE LCh	90, 7.842, 31.253
Yxy	76.4117, 0.3298, 0.3322
Android (android.graphics.Color)	4294172379 (0xFFFF3DEDB)
YUV	227.9370, -4.4059, 13.2103
Hunter-Lab	87.4138, 1.9525, 8.4421

# Details

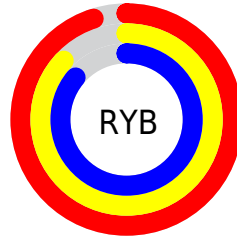
The Android color `4294172379` is a light color, and the websafe version is hex `CCCCCC`. A complement of this color would be `4292604147`, and the grayscale version is `4293190884`.

A 20% lighter version of the original color is `4294967295`, and `4290488228` is the 20% darker color. If you saturate the color by 10%, you get `4294166979`, and if you desaturate by 10%, it is `4294177779`.

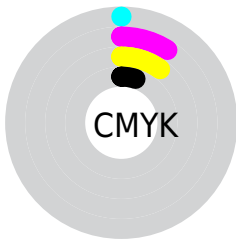
# Distribution



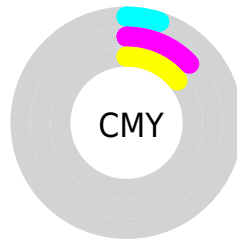
- Red (95%)
- Green (87%)
- Blue (86%)



- Red (95%)
- Yellow (87%)
- Blue (86%)



- Cyan (0%)
- Magenta (9%)
- Yellow (10%)
- Black (5%)



- Cyan (5%)
- Magenta (13%)
- Yellow (14%)

# Brightness & Saturation Gradients

These gradients show how the Android color 4294172379 changes by changing the brightness by 10 percent. The first figure shows a shift by +10% for each color and the second figure -10%.

Similar to the brightness gradients but the following saturation gradients show a change of the Android color 4294172379 by changing the saturation by 10% instead.



 4294172379

 4294172379

4294967295

 4292330175

 4290488228

 4288712074

 4286935920

 4285291096

 4283712321

 4282133803

 4280686614

 4279238656

 4294172379

 4294172379

 4294166979

 4294177779

 4294161322

 4294180863

 4294155922

 4294150522

 4294145121

 4294139465

 4294134065

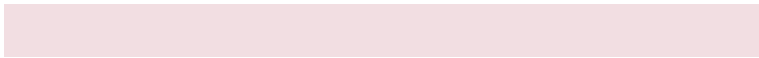
 4294128665

 4294123264

# Harmonies

## Analogous

The Analogous color harmony consists of three colors that are next to each other on the color wheel.



4294106850



4294172379



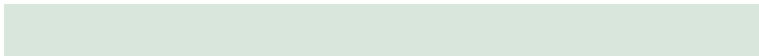
4293976278

# Triad

The Triadic color harmony groups three colors that are evenly spaced from another and form a triangle on the color wheel.



4294172379



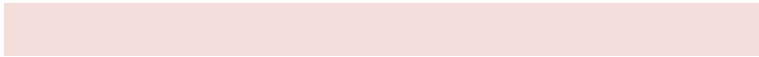
4292404955



4292600817

# Complementary

The Complementary color scheme is a pair of colors which are on the opposite of each other on the color wheel.



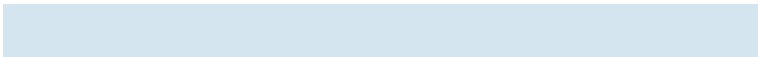
4294172379



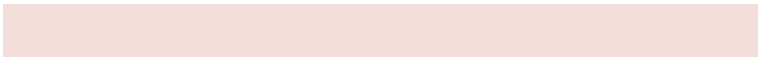
4292604147

# Split Complementary

Split-complementary colors differ from the complementary color scheme. The scheme consists of three colors, the original color and two neighbors of the complement color.



4292142575



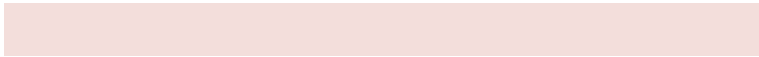
4294172379



4292012003

# Square

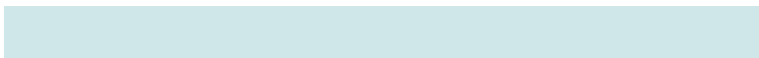
The Square scheme is like the rectangle color scheme, but the four colors are evenly spaced on the color wheel.



4294172379



4292928726



4291880938



4293255407

# Rectangle

The Rectangle color scheme consists of four colors that form a rectangle on the color wheel.



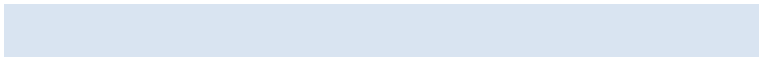
4294172379



4293648852



4291880938



4292470001



# Sweetspot

The Sweet Spot groups the original color and five complimentary colors.



4294172379



4294965495



4294171632



4286610298



4278190080



4286611584

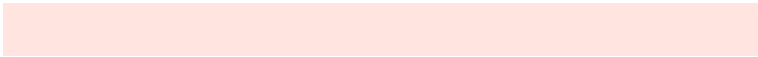


# Same Dimension

The Same Dimension uses a secret algorithm to generate beautiful new colors.



4294172379



4294960352



4294175451



4286214254



4290385664



4282058496

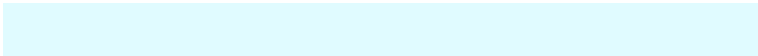


# Inverse Universe

The Inverse Universe completely reimagines the original color for something new.



4292604147



4292934655



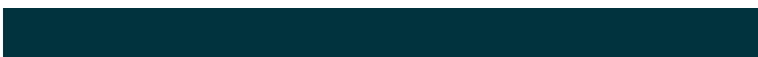
4292601075



4285430138



4278231994

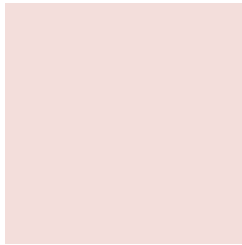


4278203195



# Previews

## White Background



This preview shows how the Android color 4294172379 looks on a white background.

## Color Contrast Check

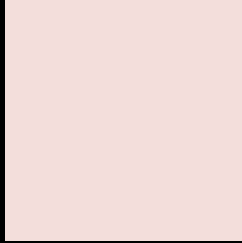
Large Text (above 18pt) WCAG AA × Fail

Any Text WCAG AA × Fail

Large Text (above 18pt) WCAG AAA × Fail

Any Text WCAG AAA × Fail

# Black Background



This preview shows how the Android color 4294172379 looks on a black background.

## Color Contrast Check

Large Text (above 18pt) WCAG AA ✓ Pass

Any Text WCAG AA ✓ Pass

Large Text (above 18pt) WCAG AAA ✓ Pass

Any Text WCAG AAA ✓ Pass

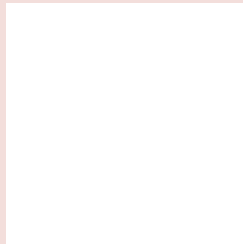
If you want to check with other color combinations, try the [Color Contrast Checker](#).



# Android 4294172379 Background



This preview shows how black text looks on a background with the Android color 4294172379.



This preview shows how white text looks on a background with the Android color 4294172379.

# Color Blindness Simulation

Color vision deficiency is a very complex topic, and I could not describe the different causes any better than Wikipedia does, so if you want to learn more, you should check out their [article about color blindness](#).

## Dichromacy





**Tritanopia**  
4294302701

# Trichromacy



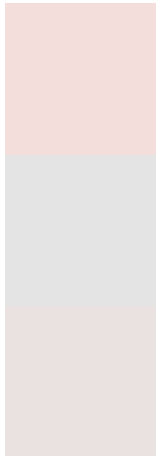
**Original Color**  
4294172379

**Protanomaly**  
4293714396

**Deuteranomaly**  
4294499548

**Tritanomaly**  
4294237414

# Monochromacy



**Original Color**  
4294172379

**Achromatopsia**  
4293190884

**Achromatomaly**  
4293518049

# CSS Examples

## Text

The CSS property to change the color of the text to Android 4294172379 is called "color". The color property can be set on classes, ids or directly on the HTML element.

This example shows how text in the color `rgb(243, 222, 219)` looks like.

```
.text, #text, p{  
    color:rgb(243, 222, 219)  
}
```

If you want to add a text shadow in that color use the text-shadow property, you can generate a text shadow directly with our [CSS Text Shadow Generator](#).

Here you see how black text with a 4 pixel rgb(243, 222, 219) colored shadow looks like.

```
.shadow{ text-shadow: 4px 4px 2px rgb(243, 222, 219) }
```

## Border

The CSS property to change the border of an element to Android 4294172379 is called "border". The border property can be set on classes, ids or directly on the HTML element.

This example shows the color as border, it can be applied via the CSS property "border" or "border-color".

```
.border, #border, table{ border:4px solid rgb(243, 222, 219) }
```

If only the border color should be changed use the property `border-color`.

```
.border{ border-color:rgb(243, 222, 219) }
```

If you want to add a box shadow in that color use:

Here you see how a box with a 4 pixel `rgb(243, 222, 219)` colored shadow looks like.

```
.boxshadow{ -moz-box-shadow:4px 4px 4px  
4px rgb(243, 222, 219); -webkit-box-  
shadow:4px 4px 4px 4px rgb(243, 222, 219);  
box-shadow:4px 4px 4px 4px rgb(243, 222,  
219) }
```

# Background

The CSS property to change the background color of an element to Android 4294172379 is called "background". The background property can be set on classes, ids or directly on the HTML element.

```
.background, #background, body{  
background: rgb(243, 222, 219) }
```

If only the background color should be changed can be used:

```
.background{ background-color: rgb(243,  
222, 219) }
```

This example shows the color as background, it is applied via the CSS property "background".

To optimize and compress your CSS code, you can use our [online CSS compressor and optimizer](#) based on csstidy. If you want to create a linear or radial gradient as background or border, check our [CSS Gradient Generator](#).



Hey! You found this booklet interesting? Support Converting Colors with the new Membership Option!

The pro membership hides all ads, plus gives you double the colors in the color bucket, and more awesome pro features!

**[Learn more, Memberships starting at \\$2.50/m!](#)**

**Follow me  
on Twitter!**

@ConvertingColor