

Converting Colors

Android(4294204047)

Have a look what the booklet for
Android(4294204047) contains.

Android(4294204047)	3
<i>Conversions</i>	4
<i>Details</i>	6
<i>Harmonies</i>	11
<i>Previews</i>	23
<i>Color Blindness Simulation</i>	26
<i>CSS Examples</i>	29

Color

Android(4294204047)

Conversions

Conversions Part 1

Format	Color
Hex	F45A8F
RGB	244, 90, 143
RGB Percent	96%, 35%, 56%
CMY	0.0431, 0.6471, 0.4392
CMYK	0.00, 0.63, 0.41, 0.04
HSL	339°, 88%, 65%
HSV	339°, 63%, 96%
XYZ	45.9223, 28.5286, 29.0728
YIQ	142.0880, 74.7710, 49.1310

Conversions

Conversions Part 2

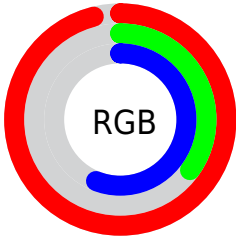
Format	Color
R_{YB}	244, 90, 143
Decimal	16013967
CIE _{Lab}	60.36, 63.19, 2.87
CIE _{LCh}	60, 63.255, 2.604
Yxy	28.5286, 0.4436, 0.2756
Android (android.graphics.Color)	4294204047 (0xFFFF45A8F)
YUV	142.0880, 0.4496, 89.3768
Hunter-Lab	53.4122, 59.9981, 5.1164

Details

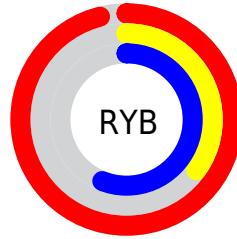
The Android color `4294204047` is a light color, and the websafe version is hex `FF6699`. The color can be described as light muted rose. A complement of this color would be `4284150975`, and the grayscale version is `4287532686`.

A 20% lighter version of the original color is `4294939589`, and `4290189149` is the 20% darker color. If you saturate the color by 10%, you get `4294197887`, and if you desaturate by 10%, it is `4294210207`.

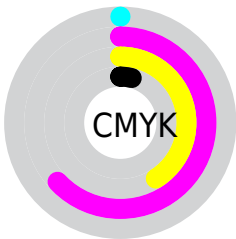
Distribution



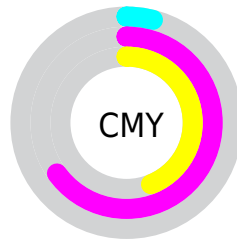
- Red (96%)
- Green (35%)
- Blue (56%)



- Red (96%)
- Yellow (35%)
- Blue (56%)



- Cyan (0%)
- Magenta (63%)
- Yellow (41%)
- Black (4%)



- Cyan (4%)
- Magenta (65%)
- Yellow (44%)

Brightness & Saturation Gradients

These gradients show how the Android color 4294204047 changes by changing the brightness by 10 percent. The first figure shows a shift by +10% for each color and the second figure -10%.

Similar to the brightness gradients but the following saturation gradients show a change of the Android color 4294204047 by changing the saturation by 10% instead.

 4294204047

 4294204047

4294967295

 4292164725

 4294939589

 4290189149

 4294947040

 4288217158

 4294954493

 4286316592

 4294961919

 4284350491

 4282646531

 4280483841

 4278190080

 4294204047

 4294204047

■ 4294197887

■ 4294210207

■ 4294191471

■ 4294216623

■ 4294185311

■ 4294222783

■ 4294180948

■ 4294229199

■ 4294235359

■ 4294241519

■ 4294246399

Harmonies

Analogous

The Analogous color harmony consists of three colors that are next to each other on the color wheel.



4292372678



4294204047



4294009945

Triad

The Triadic color harmony groups three colors that are evenly spaced from another and form a triangle on the color wheel.



4294204047



4285570857



4278232308

Complementary

The Complementary color scheme is a pair of colors which are on the opposite of each other on the color wheel.



4294204047



4284150975

Split Complementary

Split-complementary colors differ from the complementary color scheme. The scheme consists of three colors, the original color and two neighbors of the complement color.



4278234060



4294204047



4278233179

Square

The Square scheme is like the rectangle color scheme, but the four colors are evenly spaced on the color wheel.



4294204047



4289302793



4278234261



4278228991

Rectangle

The Rectangle color scheme consists of four colors that form a rectangle on the color wheel.



4294204047



4292899641



4278234261



4278233065

Sweetspot

The Sweet Spot groups the original color and five complimentary colors.



4294204047



4294954975



4290665204



4286603884



4278190080



4286611584

Same Dimension

The Same Dimension uses a secret algorithm to generate beautiful new colors.



4294204047



4294917504



4294209882



4286213746



4290379840



4282056724

Inverse Universe

The Inverse Universe completely reimagines the original color for something new.



4294204047



4294917504



4284145140



4286213746



4290379840



4282056724

Previews

White Background



This preview shows how the Android color 4294204047 looks on a white background.

Color Contrast Check

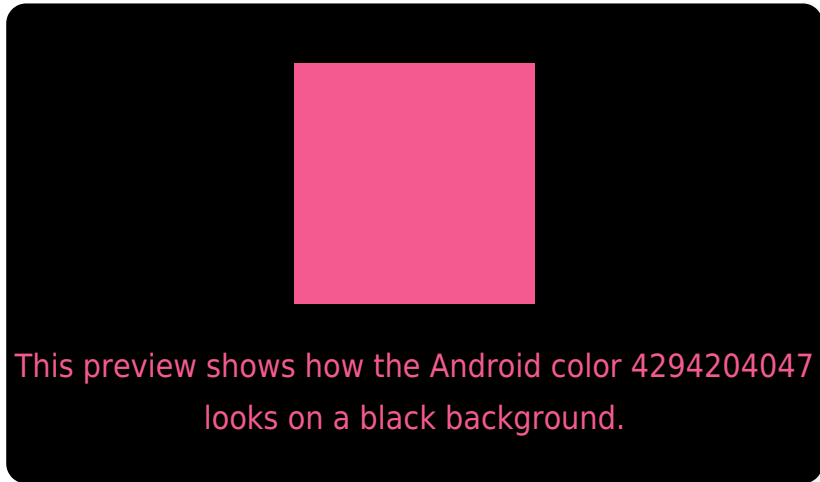
Large Text (above 18pt) WCAG AA ✓ Pass

Any Text WCAG AA ✗ Fail

Large Text (above 18pt) WCAG AAA ✗ Fail

Any Text WCAG AAA ✗ Fail

Black Background



Color Contrast Check

Large Text (above 18pt) WCAG AA ✓ Pass

Any Text WCAG AA ✓ Pass

Large Text (above 18pt) WCAG AAA ✓ Pass

Any Text WCAG AAA × Fail

If you want to check with other color combinations, try the [Color Contrast Checker](#).

Android 4294204047 Background



This preview shows how black text looks on a background with the Android color 4294204047.



This preview shows how white text looks on a background with the Android color 4294204047.

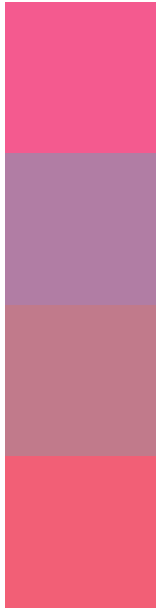
Color Blindness Simulation

Color vision deficiency is a very complex topic, and I could not describe the different causes any better than Wikipedia does, so if you want to learn more, you should check out their [article about color blindness](#).

Dichromacy



Trichromacy



Original Color
4294204047

Protanomaly
4289822116

Deuteranomaly
4290869899

Tritanomaly
4294074230

Monochromacy



Original Color
4294204047

Achromatopsia
4287532686

Achromatomaly
4289952654

CSS Examples

Text

The CSS property to change the color of the text to Android 4294204047 is called "color". The color property can be set on classes, ids or directly on the HTML element.

This example shows how text in the color `rgb(244, 90, 143)` looks like.

```
.text, #text, p{  
    color:rgb(244, 90, 143)  
}
```

If you want to add a text shadow in that color use the text-shadow property, you can generate a text shadow directly with our [CSS Text Shadow Generator](#).

Here you see how black text with a 4 pixel rgb(244, 90, 143) colored shadow looks like.

```
.shadow{ text-shadow: 4px 4px 2px rgb(244, 90, 143) }
```

Border

The CSS property to change the border of an element to Android 4294204047 is called "border". The border property can be set on classes, ids or directly on the HTML element.

This example shows the color as border, it can be applied via the CSS property "border" or "border-color".

```
.border, #border, table{ border:4px solid rgb(244, 90, 143) }
```

If only the border color should be changed use the property border-color.

```
.border{ border-color:rgb(244, 90, 143) }
```

If you want to add a box shadow in that color use:

Here you see how a box with a 4 pixel rgb(244, 90, 143) colored shadow looks like.

```
.boxshadow{ -moz-box-shadow:4px 4px 4px  
4px rgb(244, 90, 143); -webkit-box-  
shadow:4px 4px 4px 4px rgb(244, 90, 143);  
box-shadow:4px 4px 4px 4px rgb(244, 90,  
143) }
```

Background

The CSS property to change the background color of an element to Android 4294204047 is called "background". The background property can be set on classes, ids or directly on the HTML element.

```
.background, #background, body{  
background: rgb(244, 90, 143) }
```

If only the background color should be changed can be used:

```
.background{ background-color: rgb(244, 90,  
143) }
```

This example shows the color as background, it is applied via the CSS property "background".

To optimize and compress your CSS code, you can use our [online CSS compressor and optimizer](#) based on csstidy. If you want to create a linear or radial gradient as background or border, check our [CSS Gradient Generator](#).

Hey! You found this booklet interesting? Support Converting Colors with the new Membership Option!

The pro membership hides all ads, plus gives you double the colors in the color bucket, and more awesome pro features!

[Learn more, Memberships starting at \\$2.50/m!](#)

**Follow me
on Twitter!**

@ConvertingColor