

# Converting Colors

Android(4294209172)

Have a look what the booklet for  
Android(4294209172) contains.

<b>Android(4294209172)</b> .....	3
<b><i>Conversions</i></b> .....	4
<b><i>Details</i></b> .....	6
<b><i>Harmonies</i></b> .....	11
<b><i>Previews</i></b> .....	23
<b><i>Color Blindness Simulation</i></b> .....	26
<b><i>CSS Examples</i></b> .....	29

# **Color**

**Android(4294209172)**

# Conversions

## Conversions Part 1

Format	Color
Hex	F46E94
RGB	244, 110, 148
RGB Percent	96%, 43%, 58%
CMY	0.0431, 0.5686, 0.4196
CMYK	0.00, 0.55, 0.39, 0.04
HSL	343°, 86%, 69%
HSV	343°, 55%, 96%
XYZ	48.2295, 32.5231, 31.7526
YIQ	154.3980, 67.6660, 40.2260

# Conversions

## Conversions Part 2

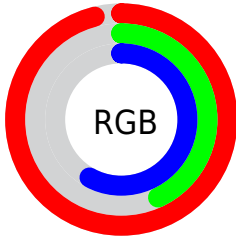
<b>Format</b>	<b>Color</b>
<b>R<sub>YB</sub></b>	244, 110, 148
Decimal	16019092
CIE Lab	63.77, 54.96, 4.91
CIE LCh	64, 55.176, 5.107
Yxy	32.5231, 0.4287, 0.2891
Android (android.graphics.Color)	4294209172 (0xFFFF46E94)
YUV	154.3980, -3.1542, 78.5810
Hunter-Lab	57.0290, 51.1568, 6.9088

# Details

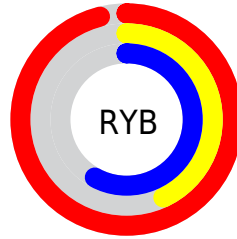
The Android color **4294209172** is a light color, and the websafe version is hex **FF6699**. A complement of this color would be **4285461710**, and the grayscale version is **4288322202**.

A 20% lighter version of the original color is **4294944458**, and **4290262626** is the 20% darker color. If you saturate the color by 10%, you get **4294203011**, and if you desaturate by 10%, it is **4294215333**.

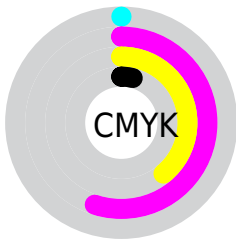
# Distribution



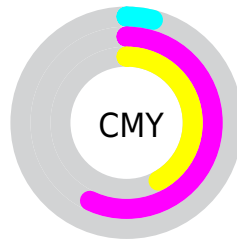
- Red (96%)
- Green (43%)
- Blue (58%)



- Red (96%)
- Yellow (43%)
- Blue (58%)



- Cyan (0%)
- Magenta (55%)
- Yellow (39%)
- Black (4%)



- Cyan (4%)
- Magenta (57%)
- Yellow (42%)

# Brightness & Saturation Gradients

These gradients show how the Android color 4294209172 changes by changing the brightness by 10 percent. The first figure shows a shift by +10% for each color and the second figure -10%.

Similar to the brightness gradients but the following saturation gradients show a change of the Android color 4294209172 by changing the saturation by 10% instead.



 4294209172

 4294209172

4294967295

 4292235898

 4294944458

 4290262626

 4294951654

 4288287818

 4294959103

 4286382132

 4294966527

 4284547103

 4282777605

 4280877057

 4278190080

 4294209172

 4294209172

■ 4294203011

■ 4294215333

■ 4294196593

■ 4294221751

■ 4294190432

■ 4294227912

■ 4294184014

■ 4294234330

■ 4294180933

■ 4294240491

■ 4294246397

■ 4294246399

# Harmonies

## Analogous

The Analogous color harmony consists of three colors that are next to each other on the color wheel.



4292704197



4294209172



4293949285

# Triad

The Triadic color harmony groups three colors that are evenly spaced from another and form a triangle on the color wheel.



4294209172



4286228549



4278233843

# Complementary

The Complementary color scheme is a pair of colors which are on the opposite of each other on the color wheel.



4294209172



4285461710

# Split Complementary

Split-complementary colors differ from the complementary color scheme. The scheme consists of three colors, the original color and two neighbors of the complement color.



4278235602



4294209172



4280987759

# Square

The Square scheme is like the rectangle color scheme, but the four colors are evenly spaced on the color wheel.



4294209172



4289633073



4278236066



4282818044

# Rectangle

The Rectangle color scheme consists of four colors that form a rectangle on the color wheel.



4294209172



4292969034



4278236066



4278234602



# Sweetspot

The Sweet Spot groups the original color and five complimentary colors.



4294209172



4294956770



4291587828



4286605166



4278190080



4286611584



# Same Dimension

The Same Dimension uses a secret algorithm to generate beautiful new colors.



4294209172



4294924166



4294216046



4286213746



4290379829



4282056721



# Inverse Universe

The Inverse Universe completely reimagines the original color for something new.



4294209172



4294924166



4285454836



4286213746



4290379829

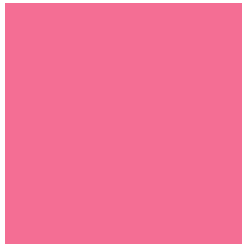


4282056721



# Previews

## White Background



This preview shows how the Android color 4294209172 looks on a white background.

## Color Contrast Check

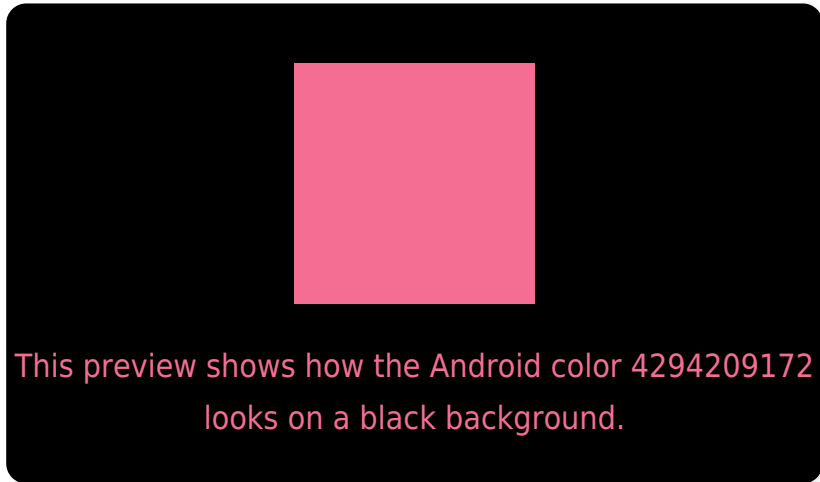
Large Text (above 18pt) WCAG AA × Fail

Any Text WCAG AA × Fail

Large Text (above 18pt) WCAG AAA × Fail

Any Text WCAG AAA × Fail

# Black Background



## Color Contrast Check

Large Text (above 18pt) WCAG AA ✓ Pass

Any Text WCAG AA ✓ Pass

Large Text (above 18pt) WCAG AAA ✓ Pass

Any Text WCAG AAA ✓ Pass

If you want to check with other color combinations, try the [Color Contrast Checker](#).



# Android 4294209172 Background



This preview shows how black text looks on a background with the Android color 4294209172.



This preview shows how white text looks on a background with the Android color 4294209172.

# Color Blindness Simulation

Color vision deficiency is a very complex topic, and I could not describe the different causes any better than Wikipedia does, so if you want to learn more, you should check out their [article about color blindness](#).

## Dichromacy



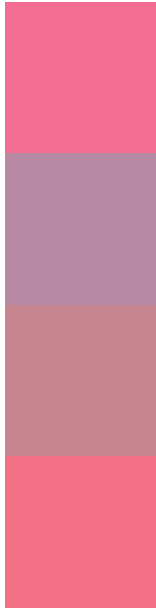
**Original Color**  
4294209172

**Protanopia**  
4288191149

**Deuteranopia**  
4289697166



# Trichromacy



**Original Color**  
4294209172

**Protanomaly**  
4290349732

**Deuteranomaly**  
4291331984

**Tritanomaly**  
4294144388

# Monochromacy



**Original Color**  
4294209172

**Achromatopsia**  
4288322202

**Achromatomaly**  
4290480792

# CSS Examples

## Text

The CSS property to change the color of the text to Android 4294209172 is called "color". The color property can be set on classes, ids or directly on the HTML element.

This example shows how text in the color `rgb(244, 110, 148)` looks like.

```
.text, #text, p{  
    color:rgb(244, 110, 148)  
}
```

If you want to add a text shadow in that color use the text-shadow property, you can generate a text shadow directly with our [CSS Text Shadow Generator](#).

Here you see how black text with a 4 pixel rgb(244, 110, 148) colored shadow looks like.

```
.shadow{ text-shadow: 4px 4px 2px rgb(244, 110, 148) }
```

## Border

The CSS property to change the border of an element to Android 4294209172 is called "border". The border property can be set on classes, ids or directly on the HTML element.

This example shows the color as border, it can be applied via the CSS property "border" or "border-color".

```
.border, #border, table{ border:4px solid rgb(244, 110, 148) }
```

If only the border color should be changed use the property `border-color`.

```
.border{ border-color:rgb(244, 110, 148) }
```

If you want to add a box shadow in that color use:

Here you see how a box with a 4 pixel `rgb(244, 110, 148)` colored shadow looks like.

```
.boxshadow{ -moz-box-shadow:4px 4px 4px  
4px rgb(244, 110, 148); -webkit-box-  
shadow:4px 4px 4px 4px rgb(244, 110, 148);  
box-shadow:4px 4px 4px 4px rgb(244, 110,  
148) }
```

# Background

The CSS property to change the background color of an element to Android 4294209172 is called "background". The background property can be set on classes, ids or directly on the HTML element.

```
.background, #background, body{  
background: rgb(244, 110, 148) }
```

If only the background color should be changed can be used:

```
.background{ background-color: rgb(244,  
110, 148) }
```

This example shows the color as background, it is applied via the CSS property "background".

To optimize and compress your CSS code, you can use our [online CSS compressor and optimizer](#) based on csstidy. If you want to create a linear or radial gradient as background or border, check our [CSS Gradient Generator](#).



Hey! You found this booklet interesting? Support Converting Colors with the new Membership Option!

The pro membership hides all ads, plus gives you double the colors in the color bucket, and more awesome pro features!

**[Learn more, Memberships starting at \\$2.50/m!](#)**

**Follow me  
on Twitter!**

@ConvertingColor