

Converting Colors

Android(4294212502)

Have a look what the booklet for
Android(4294212502) contains.

Android(4294212502)	3
<i>Conversions</i>	4
<i>Details</i>	6
<i>Harmonies</i>	11
<i>Previews</i>	23
<i>Color Blindness Simulation</i>	26
<i>CSS Examples</i>	29

Color

Android(4294212502)

Conversions

Conversions Part 1

Format	Color
Hex	F47B96
RGB	244, 123, 150
RGB Percent	96%, 48%, 59%
CMY	0.0431, 0.5176, 0.4118
CMYK	0.00, 0.50, 0.39, 0.04
HSL	347°, 85%, 72%
HSV	347°, 50%, 96%
XYZ	49.8962, 35.6010, 33.0960
YIQ	162.2570, 63.4490, 34.0490

Conversions

Conversions Part 2

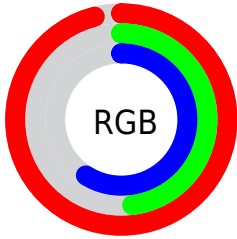
Format	Color
R _Y B	244, 123, 150
Decimal	16022422
CIE Lab	66.21, 48.98, 7.28
CIE LCh	66, 49.515, 8.449
Yxy	35.6010, 0.4207, 0.3002
Android (android.graphics.Color)	4294212502 (0xFFFF47B96)
YUV	162.2570, -6.0427, 71.6886
Hunter-Lab	59.6666, 44.8541, 8.8795

Details

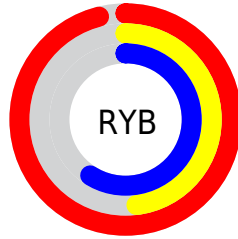
The Android color `4294212502` is a light color, and the websafe version is hex `FF6699`. A complement of this color would be `4286313689`, and the grayscale version is `4288848546`.

A 20% lighter version of the original color is `4294947532`, and `4290266467` is the 20% darker color. If you saturate the color by 10%, you get `4294206339`, and if you desaturate by 10%, it is `4294218665`.

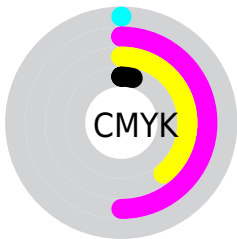
Distribution



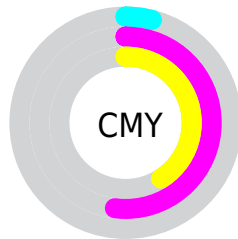
- Red (96%)
- Green (48%)
- Blue (59%)



- Red (96%)
- Yellow (48%)
- Blue (59%)



- Cyan (0%)
- Magenta (50%)
- Yellow (39%)
- Black (4%)



- Cyan (4%)
- Magenta (52%)
- Yellow (41%)

Brightness & Saturation Gradients

These gradients show how the Android color 4294212502 changes by changing the brightness by 10 percent. The first figure shows a shift by +10% for each color and the second figure -10%.

Similar to the brightness gradients but the following saturation gradients show a change of the Android color 4294212502 by changing the saturation by 10% instead.

 4294212502

 4294212502

4294967295

 4292239484

 4294947532

 4290266467

 4294954984

 4288358732

 4294962431

 4286448693

 4284612640

 4282843144

 4281139201

 4278190080

 4294212502

 4294212502

 4294206339

 4294218665

 4294199920

 4294225084

 4294193757

 4294231247

 4294187338

 4294237666

 4294181175

 4294243829

 4294180918

 4294246399

Harmonies

Analogous

The Analogous color harmony consists of three colors that are next to each other on the color wheel.



4293034435



4294212502



4293821292

Triad

The Triadic color harmony groups three colors that are evenly spaced from another and form a triangle on the color wheel.



4294212502



4286557785



4278234867

Complementary

The Complementary color scheme is a pair of colors which are on the opposite of each other on the color wheel.



4294212502



4286313689

Split Complementary

Split-complementary colors differ from the complementary color scheme. The scheme consists of three colors, the original color and two neighbors of the complement color.



4278236887



4294212502



4282234239

Square

The Square scheme is like the rectangle color scheme, but the four colors are evenly spaced on the color wheel.



4294212502



4289700677



4278237357



4285243897

Rectangle

The Rectangle color scheme consists of four colors that form a rectangle on the color wheel.



4294212502



4292840790



4278237357



4278235628

Sweetspot

The Sweet Spot groups the original color and five complimentary colors.



4294212502



4294957537



4292377588



4286605678



4278190080



4286611584

Same Dimension

The Same Dimension uses a secret algorithm to generate beautiful new colors.



4294212502



4294928008



4294220667



4286213745



4290379818



4282056717

Inverse Universe

The Inverse Universe completely reimagines the original color for something new.



4294212502



4294928008



4286305524



4286213745



4290379818



4282056717

Previews

White Background



This preview shows how the Android color 4294212502 looks on a white background.

Color Contrast Check

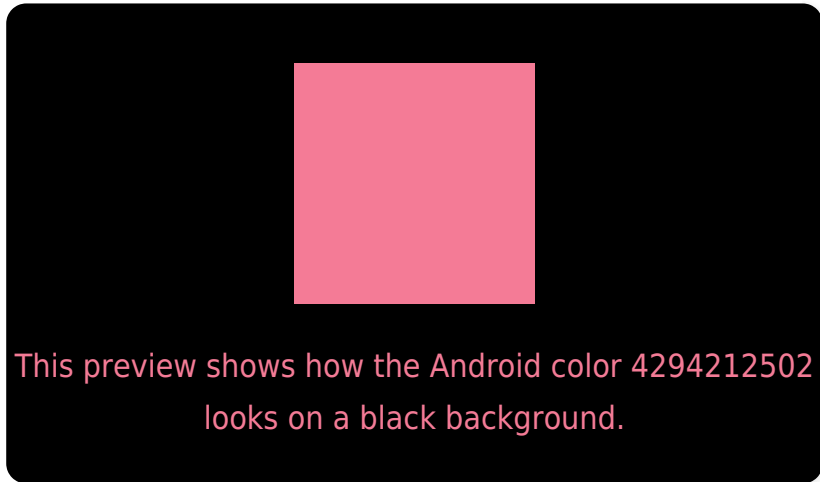
Large Text (above 18pt) WCAG AA × Fail

Any Text WCAG AA × Fail

Large Text (above 18pt) WCAG AAA × Fail

Any Text WCAG AAA × Fail

Black Background



Color Contrast Check

Large Text (above 18pt) WCAG AA ✓ Pass

Any Text WCAG AA ✓ Pass

Large Text (above 18pt) WCAG AAA ✓ Pass

Any Text WCAG AAA ✓ Pass

If you want to check with other color combinations, try the [Color Contrast Checker](#).

Android 4294212502 Background



This preview shows how black text looks on a background with the Android color 4294212502.



This preview shows how white text looks on a background with the Android color 4294212502.

Color Blindness Simulation

Color vision deficiency is a very complex topic, and I could not describe the different causes any better than Wikipedia does, so if you want to learn more, you should check out their [article about color blindness](#).

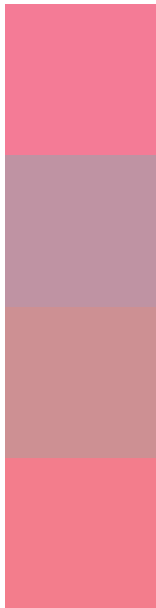
Dichromacy





Tritanopia
4294147719

Trichromacy



Original Color
4294212502

Protanomaly
4290745251

Deuteranomaly
4291661971

Tritanomaly
4294147468

Monochromacy



Original Color
4294212502

Achromatopsia
4288848546

Achromatomaly
4290811038

CSS Examples

Text

The CSS property to change the color of the text to Android 4294212502 is called "color". The color property can be set on classes, ids or directly on the HTML element.

This example shows how text in the color `rgb(244, 123, 150)` looks like.

```
.text, #text, p{  
    color:rgb(244, 123, 150)  
}
```

If you want to add a text shadow in that color use the text-shadow property, you can generate a text shadow directly with our [CSS Text Shadow Generator](#).

Here you see how black text with a 4 pixel rgb(244, 123, 150) colored shadow looks like.

```
.shadow{ text-shadow: 4px 4px 2px rgb(244, 123, 150) }
```

Border

The CSS property to change the border of an element to Android 4294212502 is called "border". The border property can be set on classes, ids or directly on the HTML element.

This example shows the color as border, it can be applied via the CSS property "border" or "border-color".

```
.border, #border, table{ border:4px solid rgb(244, 123, 150) }
```

If only the border color should be changed use the property `border-color`.

```
.border{ border-color:rgb(244, 123, 150) }
```

If you want to add a box shadow in that color use:

Here you see how a box with a 4 pixel `rgb(244, 123, 150)` colored shadow looks like.

```
.boxshadow{ -moz-box-shadow:4px 4px 4px  
4px rgb(244, 123, 150); -webkit-box-  
shadow:4px 4px 4px 4px rgb(244, 123, 150);  
box-shadow:4px 4px 4px 4px rgb(244, 123,  
150) }
```

Background

The CSS property to change the background color of an element to Android 4294212502 is called "background". The background property can be set on classes, ids or directly on the HTML element.

```
.background, #background, body{  
background: rgb(244, 123, 150) }
```

If only the background color should be changed can be used:

```
.background{ background-color: rgb(244,  
123, 150) }
```

This example shows the color as background, it is applied via the CSS property "background".

To optimize and compress your CSS code, you can use our [online CSS compressor and optimizer](#) based on csstidy. If you want to create a linear or radial gradient as background or border, check our [CSS Gradient Generator](#).

Hey! You found this booklet interesting? Support Converting Colors with the new Membership Option!

The pro membership hides all ads, plus gives you double the colors in the color bucket, and more awesome pro features!

[Learn more, Memberships starting at \\$2.50/m!](#)

**Follow me
on Twitter!**

@ConvertingColor