

Converting Colors

Android(4294222000)

Have a look what the booklet for
Android(4294222000) contains.

Android(4294222000)	3
<i>Conversions</i>	4
<i>Details</i>	6
<i>Harmonies</i>	11
<i>Previews</i>	23
<i>Color Blindness Simulation</i>	26
<i>CSS Examples</i>	29

Color

Android(4294222000)

Conversions

Conversions Part 1

Format	Color
Hex	F4A0B0
RGB	244, 160, 176
RGB Percent	96%, 63%, 69%
CMY	0.0431, 0.3725, 0.3098
CMYK	0.00, 0.34, 0.28, 0.04
HSL	349°, 79%, 79%
HSV	349°, 34%, 96%
XYZ	57.7155, 47.5093, 47.2026
YIQ	186.9400, 44.9280, 22.7840

Conversions

Conversions Part 2

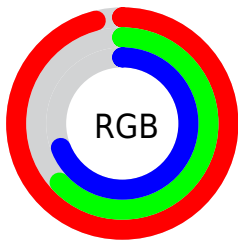
Format	Color
R_{YB}	244, 160, 176
Decimal	16031920
CIE _{Lab}	74.51, 33.26, 4.69
CIE _{LCh}	75, 33.585, 8.031
Yxy	47.5093, 0.3786, 0.3117
Android (android.graphics.Color)	4294222000 (0xFF4A0B0)
YUV	186.9400, -5.3934, 50.0416
Hunter-Lab	68.9270, 28.8434, 7.6459

Details

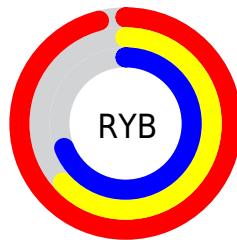
The Android color `4294222000` is a light color, and the websafe version is hex `FF9999`. A complement of this color would be `4288738532`, and the grayscale version is `4290493371`.

A 20% lighter version of the original color is `4294957288`, and `4290407292` is the 20% darker color. If you saturate the color by 10%, you get `4294215836`, and if you desaturate by 10%, it is `4294228164`.

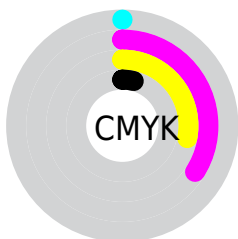
Distribution



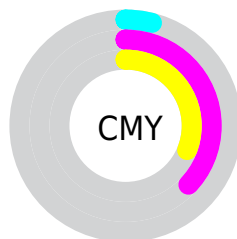
- Red (96%)
- Green (63%)
- Blue (69%)



- Red (96%)
- Yellow (63%)
- Blue (69%)



- Cyan (0%)
- Magenta (34%)
- Yellow (28%)
- Black (4%)



- Cyan (4%)
- Magenta (37%)
- Yellow (31%)

Brightness & Saturation Gradients

These gradients show how the Android color 4294222000 changes by changing the brightness by 10 percent. The first figure shows a shift by +10% for each color and the second figure -10%.

Similar to the brightness gradients but the following saturation gradients show a change of the Android color 4294222000 by changing the saturation by 10% instead.

 4294222000

 4294222000

4294967295

 4292314517

 4294957288

 4290407292

 4294964479

 4288565859

 4286724427

 4285014324

 4283237919

 4281663495

 4279566336

 4278190080

 4294222000

 4294222000

 4294215836

 4294228164

 4294209416

 4294234584

 4294203253

 4294240747

 4294196833

 4294246399

 4294190669

 4294184505

 4294180910

Harmonies

Analogous

The Analogous color harmony consists of three colors that are next to each other on the color wheel.



4293239759



4294222000



4294026387

Triad

The Triadic color harmony groups three colors that are evenly spaced from another and form a triangle on the color wheel.



4294222000



4288921990



4285317616

Complementary

The Complementary color scheme is a pair of colors which are on the opposite of each other on the color wheel.



4294222000



4288738532

Split Complementary

Split-complementary colors differ from the complementary color scheme. The scheme consists of three colors, the original color and two neighbors of the complement color.



4283484124



4294222000



4286498463

Square

The Square scheme is like the rectangle color scheme, but the four colors are evenly spaced on the color wheel.



4294222000



4291147898



4284270783



4288395252

Rectangle

The Rectangle color scheme consists of four colors that form a rectangle on the color wheel.



4294222000



4293372548



4284270783



4284466155

Sweetspot

The Sweet Spot groups the original color and five complimentary colors.



4294222000



4294960874



4293107956



4286607475



4278190080



4286611584

Same Dimension

The Same Dimension uses a secret algorithm to generate beautiful new colors.



4294222000



4294940330



4294228384



4286213744



4290379811



4282056715

Inverse Universe

The Inverse Universe completely reimagines the original color for something new.



4294222000



4294940330



4288732148



4286213744



4290379811



4282056715

Previews

White Background



This preview shows how the Android color 4294222000 looks on a white background.

Color Contrast Check

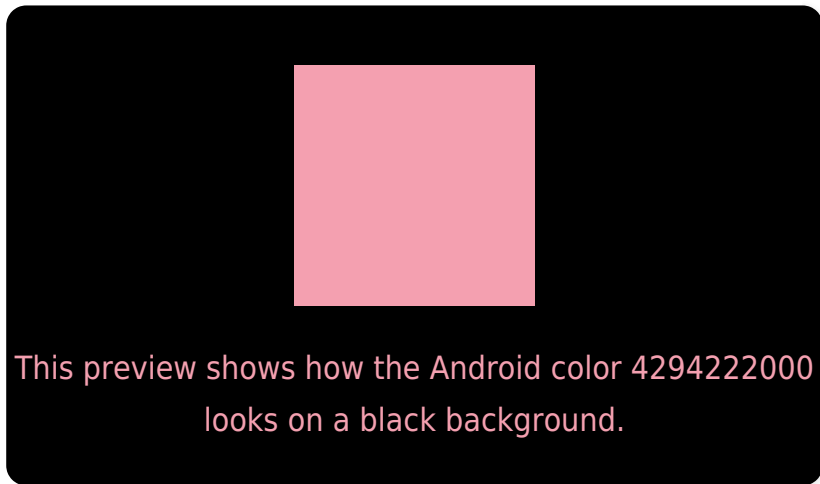
Large Text (above 18pt) WCAG AA × Fail

Any Text WCAG AA × Fail

Large Text (above 18pt) WCAG AAA × Fail

Any Text WCAG AAA × Fail

Black Background



Color Contrast Check

Large Text (above 18pt) WCAG AA ✓ Pass

Any Text WCAG AA ✓ Pass

Large Text (above 18pt) WCAG AAA ✓ Pass

Any Text WCAG AAA ✓ Pass

If you want to check with other color combinations, try the [Color Contrast Checker](#).

Android 4294222000 Background



This preview shows how black text looks on a background with the Android color 4294222000.



This preview shows how white text looks on a background with the Android color 4294222000.

Color Blindness Simulation

Color vision deficiency is a very complex topic, and I could not describe the different causes any better than Wikipedia does, so if you want to learn more, you should check out their [article about color blindness](#).


Dichromacy



Original Color
4294222000

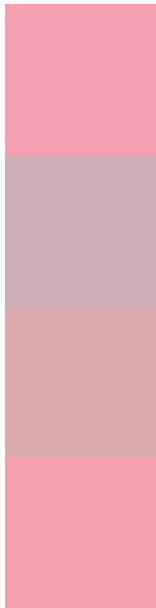
Protanopia
4290361277

Deuteranopia
4291670445



Tritanopia
4294222253

Trichromacy



Original Color
4294222000

Protanomaly
4291735480

Deuteranomaly
4292586414

Tritanomaly
4294222254

Monochromacy



Original Color
4294222000

Achromatopsia
4290493371

Achromatomaly
4291867063

CSS Examples

Text

The CSS property to change the color of the text to Android 4294222000 is called "color". The color property can be set on classes, ids or directly on the HTML element.

This example shows how text in the color `rgb(244, 160, 176)` looks like.

```
.text, #text, p{  
    color:rgb(244, 160, 176)  
}
```

If you want to add a text shadow in that color use the text-shadow property, you can generate a text shadow directly with our [CSS Text Shadow Generator](#).

Here you see how black text with a 4 pixel rgb(244, 160, 176) colored shadow looks like.

```
.shadow{ text-shadow: 4px 4px 2px rgb(244, 160, 176) }
```

Border

The CSS property to change the border of an element to Android 4294222000 is called "border". The border property can be set on classes, ids or directly on the HTML element.

This example shows the color as border, it can be applied via the CSS property "border" or "border-color".

```
.border, #border, table{ border:4px solid rgb(244, 160, 176) }
```

If only the border color should be changed use the property `border-color`.

```
.border{ border-color:rgb(244, 160, 176) }
```

If you want to add a box shadow in that color use:

Here you see how a box with a 4 pixel `rgb(244, 160, 176)` colored shadow looks like.

```
.boxshadow{ -moz-box-shadow:4px 4px 4px  
4px rgb(244, 160, 176); -webkit-box-  
shadow:4px 4px 4px 4px rgb(244, 160, 176);  
box-shadow:4px 4px 4px 4px rgb(244, 160,  
176) }
```

Background

The CSS property to change the background color of an element to Android 4294222000 is called "background". The background property can be set on classes, ids or directly on the HTML element.

```
.background, #background, body{  
background: rgb(244, 160, 176) }
```

If only the background color should be changed can be used:

```
.background{ background-color: rgb(244,  
160, 176) }
```

This example shows the color as background, it is applied via the CSS property "background".

To optimize and compress your CSS code, you can use our [online CSS compressor and optimizer](#) based on csstidy. If you want to create a linear or radial gradient as background or border, check our [CSS Gradient Generator](#).

Hey! You found this booklet interesting? Support Converting Colors with the new Membership Option!

The pro membership hides all ads, plus gives you double the colors in the color bucket, and more awesome pro features!

[Learn more, Memberships starting at \\$2.50/m!](#)

**Follow me
on Twitter!**

@ConvertingColor