

Converting Colors

Android(4294229729)

Have a look what the booklet for
Android(4294229729) contains.

Android(4294229729)	3
<i>Conversions</i>	4
<i>Details</i>	6
<i>Harmonies</i>	11
<i>Previews</i>	23
<i>Color Blindness Simulation</i>	26
<i>CSS Examples</i>	29

Color

Android(4294229729)

Conversions

Conversions Part 1

Format	Color
Hex	F4BEE1
RGB	244, 190, 225
RGB Percent	96%, 75%, 88%
CMY	0.0431, 0.2549, 0.1176
CMYK	0.00, 0.22, 0.08, 0.04
HSL	321°, 71%, 85%
HSV	321°, 22%, 96%
XYZ	69.3123, 61.4963, 79.4510
YIQ	210.1360, 20.9490, 22.3330

Conversions

Conversions Part 2

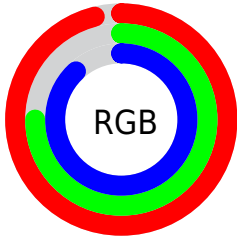
Format	Color
R _Y B	244, 190, 225
Decimal	16039649
CIE Lab	82.64, 24.86, -9.98
CIE LCh	83, 26.785, 338.125
Yxy	61.4963, 0.3297, 0.2925
Android (android.graphics.Color)	4294229729 (0xFF4BEE1)
YUV	210.1360, 7.3280, 29.6987
Hunter-Lab	78.4195, 20.5357, -5.1761

Details

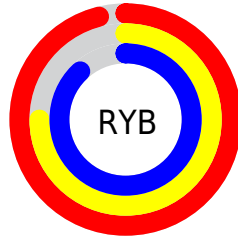
The Android color `4294229729` is a light color, and the websafe version is hex `FFCCFF`. A complement of this color would be `4290704593`, and the grayscale version is `4292006610`.

A 20% lighter version of the original color is `4294965247`, and `4290480298` is the 20% darker color. If you saturate the color by 10%, you get `4294223576`, and if you desaturate by 10%, it is `4294235882`.

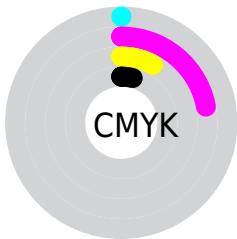
Distribution



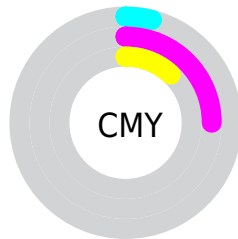
- Red (96%)
- Green (75%)
- Blue (88%)



- Red (96%)
- Yellow (75%)
- Blue (88%)



- Cyan (0%)
- Magenta (22%)
- Yellow (8%)
- Black (4%)



- Cyan (4%)
- Magenta (25%)
- Yellow (12%)

Brightness & Saturation Gradients

These gradients show how the Android color 4294229729 changes by changing the brightness by 10 percent. The first figure shows a shift by +10% for each color and the second figure -10%.

Similar to the brightness gradients but the following saturation gradients show a change of the Android color 4294229729 by changing the saturation by 10% instead.

 4294229729

 4294229729

4294967295

 4292322245

 4294965247

 4290480298

 4288704399

 4286928502

 4285218397

 4283639621

 4282060847

 4280680475

 4278190080

 4294229729

 4294229729

 4294223576

 4294235882

 4294217168

 4294242290

 4294211015

 4294246395

 4294204607

 4294246399

 4294198454

 4294192301

 4294185893

 4294181022

Harmonies

Analogous

The Analogous color harmony consists of three colors that are next to each other on the color wheel.



4292527605



4294229729



4294950088

Triad

The Triadic color harmony groups three colors that are evenly spaced from another and form a triangle on the color wheel.



4294229729



4292529820



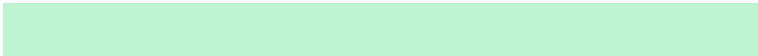
4287027948

Complementary

The Complementary color scheme is a pair of colors which are on the opposite of each other on the color wheel.



4294229729



4290704593

Split Complementary

Split-complementary colors differ from the complementary color scheme. The scheme consists of three colors, the original color and two neighbors of the complement color.



4287356116



4294229729



4290631334

Square

The Square scheme is like the rectangle color scheme, but the four colors are evenly spaced on the color wheel.



4294229729



4294035104



4288797370



4288206332

Rectangle

The Rectangle color scheme consists of four colors that form a rectangle on the color wheel.



4294229729



4294950327



4288797370



4286962660

Sweetspot

The Sweet Spot groups the original color and five complimentary colors.



4294229729



4294962681



4291935988



4286608764



4278190080



4286611584

Same Dimension

The Same Dimension uses a secret algorithm to generate beautiful new colors.



4294229729



4294949607



4294229702



4286213750



4290379897



4282056742

Inverse Universe

The Inverse Universe completely reimagines the original color for something new.



4294229729



4294949607



4290704620



4286213750



4290379897



4282056742

Previews

White Background



This preview shows how the Android color 4294229729 looks on a white background.

Color Contrast Check

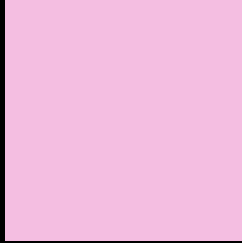
Large Text (above 18pt) WCAG AA × Fail

Any Text WCAG AA × Fail

Large Text (above 18pt) WCAG AAA × Fail

Any Text WCAG AAA × Fail

Black Background



This preview shows how the Android color 4294229729 looks on a black background.

Color Contrast Check

Large Text (above 18pt) WCAG AA ✓ Pass

Any Text WCAG AA ✓ Pass

Large Text (above 18pt) WCAG AAA ✓ Pass

Any Text WCAG AAA ✓ Pass

If you want to check with other color combinations, try the [Color Contrast Checker](#).

Android 4294229729 Background



This preview shows how black text looks on a background with the Android color 4294229729.




This preview shows how white text looks on a background with the Android color 4294229729.

Color Blindness Simulation

Color vision deficiency is a very complex topic, and I could not describe the different causes any better than Wikipedia does, so if you want to learn more, you should check out their [article about color blindness](#).

Dichromacy





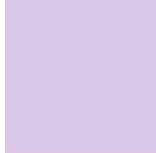
Tritanopia
4294099408

Trichromacy



Original Color

4294229729



Protanomaly

4292462567



Deuteranomaly

4293117152



Tritanomaly

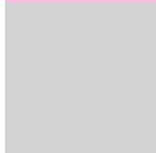
4294164694

Monochromacy



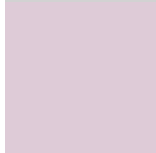
Original Color

4294229729



Achromatopsia

4292006610



Achromatomaly

4292791255

CSS Examples

Text

The CSS property to change the color of the text to Android 4294229729 is called "color". The color property can be set on classes, ids or directly on the HTML element.

This example shows how text in the color `rgb(244, 190, 225)` looks like.

```
.text, #text, p{  
    color:rgb(244, 190, 225)  
}
```

If you want to add a text shadow in that color use the text-shadow property, you can generate a text shadow directly with our [CSS Text Shadow Generator](#).

Here you see how black text with a 4 pixel rgb(244, 190, 225) colored shadow looks like.

```
.shadow{ text-shadow: 4px 4px 2px rgb(244, 190, 225) }
```

Border

The CSS property to change the border of an element to Android 4294229729 is called "border". The border property can be set on classes, ids or directly on the HTML element.

This example shows the color as border, it can be applied via the CSS property "border" or "border-color".

```
.border, #border, table{ border:4px solid rgb(244, 190, 225) }
```

If only the border color should be changed use the property `border-color`.

```
.border{ border-color:rgb(244, 190, 225) }
```

If you want to add a box shadow in that color use:

Here you see how a box with a 4 pixel `rgb(244, 190, 225)` colored shadow looks like.

```
.boxshadow{ -moz-box-shadow:4px 4px 4px 4px rgb(244, 190, 225); -webkit-box-shadow:4px 4px 4px 4px rgb(244, 190, 225); box-shadow:4px 4px 4px 4px rgb(244, 190, 225) }
```

Background

The CSS property to change the background color of an element to Android 4294229729 is called "background". The background property can be set on classes, ids or directly on the HTML element.

```
.background, #background, body{  
background: rgb(244, 190, 225) }
```

If only the background color should be changed can be used:

```
.background{ background-color: rgb(244,  
190, 225) }
```

This example shows the color as background, it is applied via the CSS property "background".

To optimize and compress your CSS code, you can use our [online CSS compressor and optimizer](#) based on csstidy. If you want to create a linear or radial gradient as background or border, check our [CSS Gradient Generator](#).

Hey! You found this booklet interesting? Support Converting Colors with the new Membership Option!

The pro membership hides all ads, plus gives you double the colors in the color bucket, and more awesome pro features!

[Learn more, Memberships starting at \\$2.50/m!](#)

**Follow me
on Twitter!**

@ConvertingColor