

# Converting Colors

Android(4294233550)

Have a look what the booklet for  
Android(4294233550) contains.

<b>Android(4294233550)</b> .....	3
<b><i>Conversions</i></b> .....	4
<b><i>Details</i></b> .....	6
<b><i>Harmonies</i></b> .....	11
<b><i>Previews</i></b> .....	23
<b><i>Color Blindness Simulation</i></b> .....	26
<b><i>CSS Examples</i></b> .....	29

# **Color**

**Android(4294233550)**

# Conversions

## Conversions Part 1

Format	Color
Hex	F4CDCE
RGB	244, 205, 206
RGB Percent	96%, 80%, 81%
CMY	0.0431, 0.1961, 0.1922
CMYK	0.00, 0.16, 0.16, 0.04
HSL	358°, 64%, 88%
HSV	358°, 16%, 96%
XYZ	70.2801, 67.3520, 67.6886
YIQ	216.7750, 22.9230, 8.5790

# Conversions

## Conversions Part 2

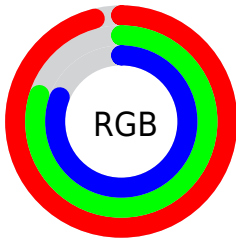
Format	Color
R <sub>Y</sub> B	244, 205, 206
Decimal	16043470
CIE Lab	85.68, 13.85, 4.62
CIE LCh	86, 14.603, 18.443
Yxy	67.3520, 0.3423, 0.3280
Android (android.graphics.Color)	4294233550 (0xFFFF4CDCE)
YUV	216.7750, -5.3121, 23.8763
Hunter-Lab	82.0682, 9.2412, 8.5463

# Details

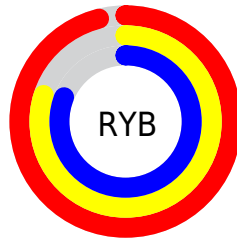
The Android color `4294233550` is a light color, and the websafe version is hex `FFCCCC`. A complement of this color would be `4291687667`, and the grayscale version is `4292467161`.

A 20% lighter version of the original color is `4294967295`, and `4290484120` is the 20% darker color. If you saturate the color by 10%, you get `4294227382`, and if you desaturate by 10%, it is `4294239718`.

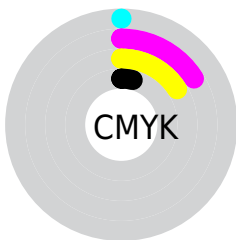
# Distribution



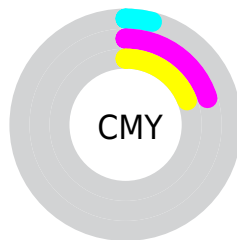
- Red (96%)
- Green (80%)
- Blue (81%)



- Red (96%)
- Yellow (80%)
- Blue (81%)



- Cyan (0%)
- Magenta (16%)
- Yellow (16%)
- Black (4%)



- Cyan (4%)
- Magenta (20%)
- Yellow (19%)

# Brightness & Saturation Gradients

These gradients show how the Android color 4294233550 changes by changing the brightness by 10 percent. The first figure shows a shift by +10% for each color and the second figure -10%.

Similar to the brightness gradients but the following saturation gradients show a change of the Android color 4294233550 by changing the saturation by 10% instead.



 4294233550

 4294233550

4294967295

 4292325811

 4290484120

 4288707966

 4286997605

 4285287501

 4283643190

 4282064673

 4280682762

 4278190080

 4294233550

 4294233550

 4294227382

 4294239718

 4294220958

 4294246142

 4294214791

 4294246399

 4294208367

 4294202199

 4294196031

 4294189608

 4294183440

 4294180870

# Harmonies

## Analogous

The Analogous color harmony consists of three colors that are next to each other on the color wheel.



4293905884



4294233550



4294037442

# Triad

The Triadic color harmony groups three colors that are evenly spaced from another and form a triangle on the color wheel.



4294233550



4291353796



4290894321

# Complementary

The Complementary color scheme is a pair of colors which are on the opposite of each other on the color wheel.



4294233550



4291687667

# Split Complementary

Split-complementary colors differ from the complementary color scheme. The scheme consists of three colors, the original color and two neighbors of the complement color.



4290174442



4294233550



4290502352

# Square

The Square scheme is like the rectangle color scheme, but the four colors are evenly spaced on the color wheel.



4294233550



4292401340



4289978078



4292007152

# Rectangle

The Rectangle color scheme consists of four colors that form a rectangle on the color wheel.



4294233550



4293644989



4289978078



4290632431



# Sweetspot

The Sweet Spot groups the original color and five complimentary colors.



4294233550



4294963955



4294168052



4286609528



4278190080



4286611584



# Same Dimension

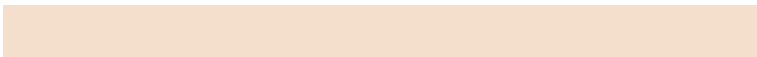
The Same Dimension uses a secret algorithm to generate beautiful new colors.



4294233550



4294954960



4294238157



4286213742



4290379781



4282056706



# Inverse Universe

The Inverse Universe completely reimagines the original color for something new.



4294233550



4294954960



4291683060



4286213742



4290379781

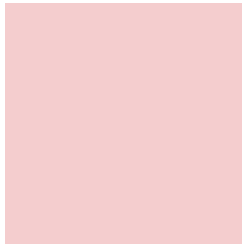


4282056706



# Previews

## White Background



This preview shows how the Android color 4294233550 looks on a white background.

## Color Contrast Check

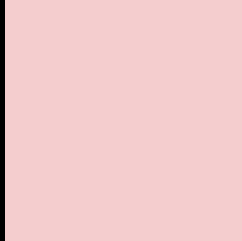
Large Text (above 18pt) WCAG AA × Fail

Any Text WCAG AA × Fail

Large Text (above 18pt) WCAG AAA × Fail

Any Text WCAG AAA × Fail

# Black Background



This preview shows how the Android color 4294233550 looks on a black background.

## Color Contrast Check

Large Text (above 18pt) WCAG AA ✓ Pass

Any Text WCAG AA ✓ Pass

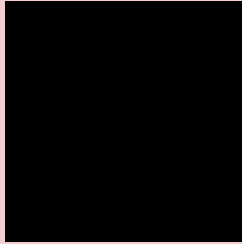
Large Text (above 18pt) WCAG AAA ✓ Pass

Any Text WCAG AAA ✓ Pass

If you want to check with other color combinations, try the [Color Contrast Checker](#).



# Android 4294233550 Background



This preview shows how black text looks on a background with the Android color 4294233550.



This preview shows how white text looks on a background with the Android color 4294233550.

# Color Blindness Simulation

Color vision deficiency is a very complex topic, and I could not describe the different causes any better than Wikipedia does, so if you want to learn more, you should check out their [article about color blindness](#).


## Dichromacy



**Original Color**  
4294233550

**Protanopia**  
4292597203

**Deuteranopia**  
4293840846



**Tritanopia**  
4294364123

# Trichromacy



**Original Color**  
4294233550

**Protanomaly**  
4293186257

**Deuteranomaly**  
4293971662

**Tritanomaly**  
4294298838

# Monochromacy



**Original Color**  
4294233550

**Achromatopsia**  
4292467161

**Achromatomaly**  
4293121493

# CSS Examples

## Text

The CSS property to change the color of the text to Android 4294233550 is called "color". The color property can be set on classes, ids or directly on the HTML element.

This example shows how text in the color `rgb(244, 205, 206)` looks like.

```
.text, #text, p{  
    color:rgb(244, 205, 206)  
}
```

If you want to add a text shadow in that color use the text-shadow property, you can generate a text shadow directly with our [CSS Text Shadow Generator](#).

Here you see how black text with a 4 pixel rgb(244, 205, 206) colored shadow looks like.

```
.shadow{ text-shadow: 4px 4px 2px rgb(244, 205, 206) }
```

## Border

The CSS property to change the border of an element to Android 4294233550 is called "border". The border property can be set on classes, ids or directly on the HTML element.

This example shows the color as border, it can be applied via the CSS property "border" or "border-color".

```
.border, #border, table{ border:4px solid rgb(244, 205, 206) }
```

If only the border color should be changed use the property `border-color`.

```
.border{ border-color:rgb(244, 205, 206) }
```

If you want to add a box shadow in that color use:

Here you see how a box with a 4 pixel `rgb(244, 205, 206)` colored shadow looks like.

```
.boxshadow{ -moz-box-shadow:4px 4px 4px  
4px rgb(244, 205, 206); -webkit-box-  
shadow:4px 4px 4px 4px rgb(244, 205, 206);  
box-shadow:4px 4px 4px 4px rgb(244, 205,  
206) }
```

# Background

The CSS property to change the background color of an element to Android 4294233550 is called "background". The background property can be set on classes, ids or directly on the HTML element.

```
.background, #background, body{  
background: rgb(244, 205, 206) }
```

If only the background color should be changed can be used:

```
.background{ background-color: rgb(244,  
205, 206) }
```

This example shows the color as background, it is applied via the CSS property "background".

To optimize and compress your CSS code, you can use our [online CSS compressor and optimizer](#) based on csstidy. If you want to create a linear or radial gradient as background or border, check our [CSS Gradient Generator](#).



Hey! You found this booklet interesting? Support Converting Colors with the new Membership Option!

The pro membership hides all ads, plus gives you double the colors in the color bucket, and more awesome pro features!

**[Learn more, Memberships starting at \\$2.50/m!](#)**

**Follow me  
on Twitter!**

@ConvertingColor