

Converting Colors

Android(4294262909)

Have a look what the booklet for
Android(4294262909) contains.

Android(4294262909)	3
<i>Conversions</i>	4
<i>Details</i>	6
<i>Harmonies</i>	11
<i>Previews</i>	23
<i>Color Blindness Simulation</i>	26
<i>CSS Examples</i>	29

Color

Android(4294262909)

Conversions

Conversions Part 1

Format	Color
Hex	F5407D
RGB	245, 64, 125
RGB Percent	96%, 25%, 49%
CMY	0.0392, 0.7490, 0.5098
CMYK	0.00, 0.74, 0.49, 0.04
HSL	340°, 90%, 61%
HSV	340°, 74%, 96%
XYZ	43.1913, 24.5599, 21.8661
YIQ	125.0730, 88.2950, 57.3430

Conversions

Conversions Part 2

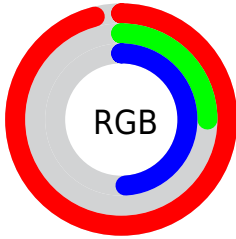
Format	Color
R_{YB}	245, 64, 125
Decimal	16072829
CIE _{Lab}	56.64, 71.28, 8.13
CIE _{LCh}	57, 71.746, 6.505
Yxy	24.5599, 0.4820, 0.2741
Android (android.graphics.Color)	4294262909 (0xFFFF5407D)
YUV	125.0730, -0.0360, 105.1760
Hunter-Lab	49.5580, 68.8416, 8.5304

Details

The Android color **4294262909** is a dark color, and the websafe version is hex **FF6699**. The color can be described as middle washed rose. A complement of this color would be **4282447288**, and the grayscale version is **4286414205**.

A 20% lighter version of the original color is **4294934193**, and **4290183245** is the 20% darker color. If you saturate the color by 10%, you get **4294256749**, and if you desaturate by 10%, it is **4294269325**.

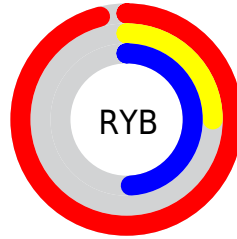
Distribution



Red (96%)

Green (25%)

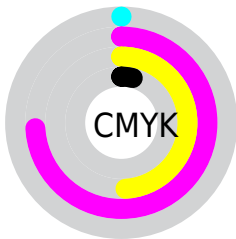
Blue (49%)



Red (96%)

Yellow (25%)

Blue (49%)

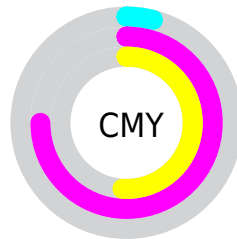


Cyan (0%)

Magenta (74%)

Yellow (49%)

Black (4%)



Cyan (4%)

Magenta (75%)

Yellow (51%)

Brightness & Saturation Gradients

These gradients show how the Android color 4294262909 changes by changing the brightness by 10 percent. The first figure shows a shift by +10% for each color and the second figure -10%.

Similar to the brightness gradients but the following saturation gradients show a change of the Android color 4294262909 by changing the saturation by 10% instead.

 4294262909

 4294262909

4294967295

 4292220516

 4294934193

 4290183245

 4294941645

 4288151606

 4294949097

 4286185505

 4294956799

 4284219402

 4294964479

 4282318851

 4279959553

 4278190080

 4294262909

 4294262909

 4294256749

 4294269325

 4294250333

 4294275485

 4294246483

 4294281902

 4294288062

 4294294478

 4294300638

 4294307055

 4294311935

Harmonies

Analogous

The Analogous color harmony consists of three colors that are next to each other on the color wheel.



4292628667



4294262909



4293678145

Triad

The Triadic color harmony groups three colors that are evenly spaced from another and form a triangle on the color wheel.



4294262909



4283734281



4278230267

Complementary

The Complementary color scheme is a pair of colors which are on the opposite of each other on the color wheel.



4294262909



4282447288

Split Complementary

Split-complementary colors differ from the complementary color scheme. The scheme consists of three colors, the original color and two neighbors of the complement color.



4278232017



4294262909



4278231379

Square

The Square scheme is like the rectangle color scheme, but the four colors are evenly spaced on the color wheel.



4294262909



4288121344



4278232212



4278225919

Rectangle

The Rectangle color scheme consists of four colors that form a rectangle on the color wheel.



4294262909



4292372503



4278232212



4278231024

Sweetspot

The Sweet Spot groups the original color and five complimentary colors.



4294262909



4294952922



4290134261



4286602858



4278190080



4286611584

Same Dimension

The Same Dimension uses a secret algorithm to generate beautiful new colors.



4294262909



4294909033



4294269760



4286213746



4290379839



4282056724

Inverse Universe

The Inverse Universe completely reimagines the original color for something new.



4294262909



4294909033



4282440437



4286213746



4290379839



4282056724

Previews

White Background



This preview shows how the Android color 4294262909 looks on a white background.

Color Contrast Check

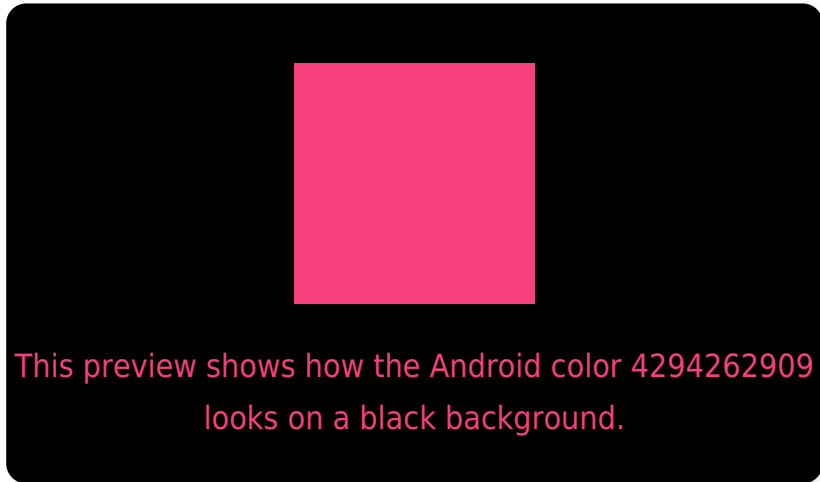
Large Text (above 18pt) WCAG AA ✓ Pass

Any Text WCAG AA ✗ Fail

Large Text (above 18pt) WCAG AAA ✗ Fail

Any Text WCAG AAA ✗ Fail

Black Background



Color Contrast Check

Large Text (above 18pt) WCAG AA ✓ Pass

Any Text WCAG AA ✓ Pass

Large Text (above 18pt) WCAG AAA ✓ Pass

Any Text WCAG AAA × Fail

If you want to check with other color combinations, try the [Color Contrast Checker](#).

Android 4294262909 Background



This preview shows how black text looks on a background with the Android color 4294262909.

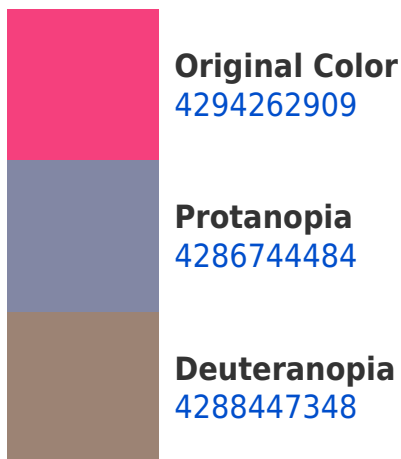


This preview shows how white text looks on a background with the Android color 4294262909.

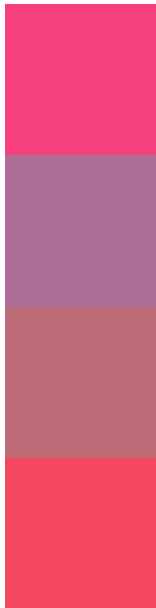
Color Blindness Simulation

Color vision deficiency is a very complex topic, and I could not describe the different causes any better than Wikipedia does, so if you want to learn more, you should check out their [article about color blindness](#).

Dichromacy



Trichromacy



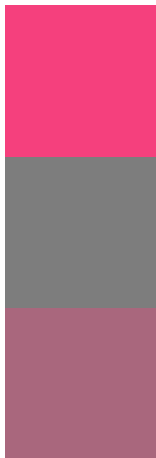
Original Color
4294262909

Protanomaly
4289490326

Deuteranomaly
4290538359

Tritanomaly
4294133600

Monochromacy



Original Color
4294262909

Achromatopsia
4286414205

Achromatomaly
4289292157

CSS Examples

Text

The CSS property to change the color of the text to Android 4294262909 is called "color". The color property can be set on classes, ids or directly on the HTML element.

This example shows how text in the color `rgb(245, 64, 125)` looks like.

```
.text, #text, p{  
    color:rgb(245, 64, 125)  
}
```

If you want to add a text shadow in that color use the text-shadow property, you can generate a text shadow directly with our [CSS Text Shadow Generator](#).

Here you see how black text with a 4 pixel rgb(245, 64, 125) colored shadow looks like.

```
.shadow{ text-shadow: 4px 4px 2px rgb(245, 64, 125) }
```

Border

The CSS property to change the border of an element to Android 4294262909 is called "border". The border property can be set on classes, ids or directly on the HTML element.

This example shows the color as border, it can be applied via the CSS property "border" or "border-color".

```
.border, #border, table{ border:4px solid rgb(245, 64, 125) }
```

If only the border color should be changed use the property `border-color`.

```
.border{ border-color:rgb(245, 64, 125) }
```

If you want to add a box shadow in that color use:

Here you see how a box with a 4 pixel `rgb(245, 64, 125)` colored shadow looks like.

```
.boxshadow{ -moz-box-shadow:4px 4px 4px  
4px rgb(245, 64, 125); -webkit-box-  
shadow:4px 4px 4px 4px rgb(245, 64, 125);  
box-shadow:4px 4px 4px 4px rgb(245, 64,  
125) }
```

Background

The CSS property to change the background color of an element to Android 4294262909 is called "background". The background property can be set on classes, ids or directly on the HTML element.

```
.background, #background, body{  
background: rgb(245, 64, 125) }
```

If only the background color should be changed can be used:

```
.background{ background-color: rgb(245, 64,  
125) }
```

This example shows the color as background, it is applied via the CSS property "background".

To optimize and compress your CSS code, you can use our [online CSS compressor and optimizer](#) based on csstidy. If you want to create a linear or radial gradient as background or border, check our [CSS Gradient Generator](#).

Hey! You found this booklet interesting? Support Converting Colors with the new Membership Option!

The pro membership hides all ads, plus gives you double the colors in the color bucket, and more awesome pro features!

[Learn more, Memberships starting at \\$2.50/m!](#)

**Follow me
on Twitter!**

@ConvertingColor