

Converting Colors

Android(4294264449)

Have a look what the booklet for
Android(4294264449) contains.

Android(4294264449)	3
<i>Conversions</i>	4
<i>Details</i>	6
<i>Harmonies</i>	11
<i>Previews</i>	23
<i>Color Blindness Simulation</i>	26
<i>CSS Examples</i>	29

Color

Android(4294264449)

Conversions

Conversions Part 1

Format	Color
Hex	F54681
RGB	245, 70, 129
RGB Percent	96%, 27%, 51%
CMY	0.0392, 0.7255, 0.4941
CMYK	0.00, 0.71, 0.47, 0.04
HSL	340°, 90%, 62%
HSV	340°, 71%, 96%
XYZ	43.8088, 25.3778, 23.3583
YIQ	129.0510, 85.3610, 55.4490

Conversions

Conversions Part 2

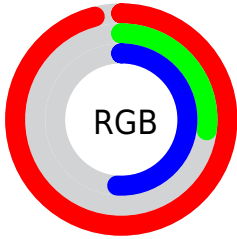
Format	Color
R_{YB}	245, 70, 129
Decimal	16074369
CIE _{Lab}	57.44, 69.67, 6.90
CIE _{LCh}	57, 70.010, 5.654
Yxy	25.3778, 0.4734, 0.2742
Android (android.graphics.Color)	4294264449 (0xFFFF54681)
YUV	129.0510, -0.0251, 101.6873
Hunter-Lab	50.3764, 67.0703, 7.7721

Details

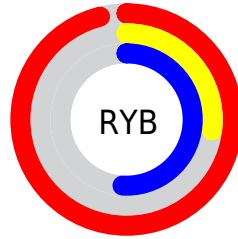
The Android color **4294264449** is a light color, and the websafe version is hex **FF6699**. The color can be described as light washed rose. A complement of this color would be **4282840506**, and the grayscale version is **4286677377**.

A 20% lighter version of the original color is **4294935222**, and **4290183248** is the 20% darker color. If you saturate the color by 10%, you get **4294258289**, and if you desaturate by 10%, it is **4294270609**.

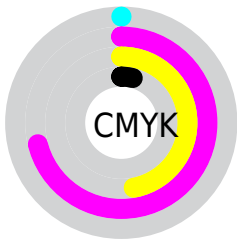
Distribution



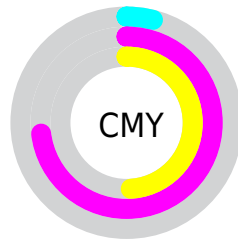
- Red (96%)
- Green (27%)
- Blue (51%)



- Red (96%)
- Yellow (27%)
- Blue (51%)



- Cyan (0%)
- Magenta (71%)
- Yellow (47%)
- Black (4%)



- Cyan (4%)
- Magenta (73%)
- Yellow (49%)

Brightness & Saturation Gradients

These gradients show how the Android color 4294264449 changes by changing the brightness by 10 percent. The first figure shows a shift by +10% for each color and the second figure -10%.

Similar to the brightness gradients but the following saturation gradients show a change of the Android color 4294264449 by changing the saturation by 10% instead.

 4294264449

 4294264449

4294967295

 4292223336

 4294935222

 4290183248

 4294942929

 4288151610

 4294950381

 4286185509

 4294957823

 4284219407

 4294965503

 4282384387

 4280090625

 4278190080

 4294264449

 4294264449

 4294258289

 4294270609

 4294251873

 4294277025

 4294246483

 4294283186

 4294289602

 4294296018

 4294302178

 4294308595

 4294311935

Harmonies

Analogous

The Analogous color harmony consists of three colors that are next to each other on the color wheel.



4292564414



4294264449



4293744454

Triad

The Triadic color harmony groups three colors that are evenly spaced from another and form a triangle on the color wheel.



4294264449



4284193298



4278230777

Complementary

The Complementary color scheme is a pair of colors which are on the opposite of each other on the color wheel.



4294264449



4282840506

Split Complementary

Split-complementary colors differ from the complementary color scheme. The scheme consists of three colors, the original color and two neighbors of the complement color.



4278232272



4294264449



4278231636

Square

The Square scheme is like the rectangle color scheme, but the four colors are evenly spaced on the color wheel.



4294264449



4288383744



4278232468



4278226687

Rectangle

The Rectangle color scheme consists of four colors that form a rectangle on the color wheel.



4294264449



4292504096



4278232468



4278231535

Sweetspot

The Sweet Spot groups the original color and five complimentary colors.



4294264449



4294953436



4290266869



4286603370



4278190080



4286611584

Same Dimension

The Same Dimension uses a secret algorithm to generate beautiful new colors.



4294264449



4294911086



4294271046



4286213746



4290379839



4282056724

Inverse Universe

The Inverse Universe completely reimagines the original color for something new.



4294264449



4294911086



4282833909



4286213746



4290379839



4282056724

Previews

White Background



This preview shows how the Android color 4294264449 looks on a white background.

Color Contrast Check

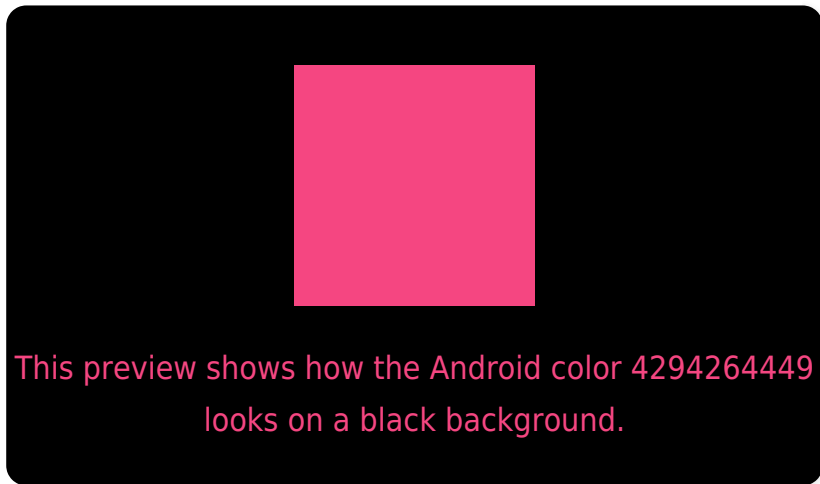
Large Text (above 18pt) WCAG AA ✓ Pass

Any Text WCAG AA ✗ Fail

Large Text (above 18pt) WCAG AAA ✗ Fail

Any Text WCAG AAA ✗ Fail

Black Background



Color Contrast Check

Large Text (above 18pt) WCAG AA ✓ Pass

Any Text WCAG AA ✓ Pass

Large Text (above 18pt) WCAG AAA ✓ Pass

Any Text WCAG AAA × Fail

If you want to check with other color combinations, try the [Color Contrast Checker](#).

Android 4294264449 Background



This preview shows how black text looks on a background with the Android color 4294264449.

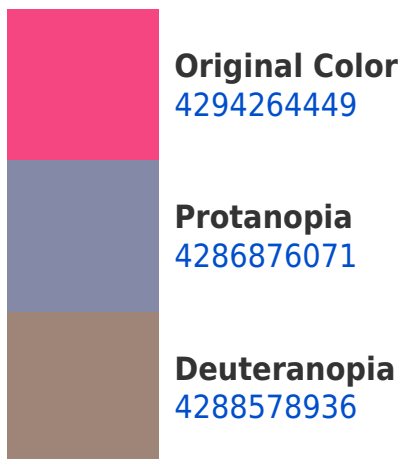


This preview shows how white text looks on a background with the Android color 4294264449.

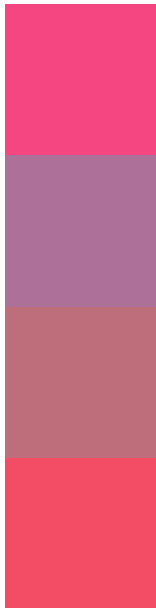
Color Blindness Simulation

Color vision deficiency is a very complex topic, and I could not describe the different causes any better than Wikipedia does, so if you want to learn more, you should check out their [article about color blindness](#).

Dichromacy



Trichromacy



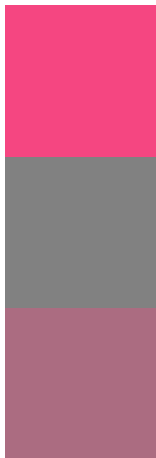
Original Color
4294264449

Protanomaly
4289556889

Deuteranomaly
4290670203

Tritanomaly
4294134885

Monochromacy



Original Color
4294264449

Achromatopsia
4286677377

Achromatomaly
4289424513

CSS Examples

Text

The CSS property to change the color of the text to Android 4294264449 is called "color". The color property can be set on classes, ids or directly on the HTML element.

This example shows how text in the color `rgb(245, 70, 129)` looks like.

```
.text, #text, p{  
    color:rgb(245, 70, 129)  
}
```

If you want to add a text shadow in that color use the text-shadow property, you can generate a text shadow directly with our [CSS Text Shadow Generator](#).

Here you see how black text with a 4 pixel rgb(245, 70, 129) colored shadow looks like.

```
.shadow{ text-shadow: 4px 4px 2px rgb(245, 70, 129) }
```

Border

The CSS property to change the border of an element to Android 4294264449 is called "border". The border property can be set on classes, ids or directly on the HTML element.

This example shows the color as border, it can be applied via the CSS property "border" or "border-color".

```
.border, #border, table{ border:4px solid rgb(245, 70, 129) }
```

If only the border color should be changed use the property `border-color`.

```
.border{ border-color:rgb(245, 70, 129) }
```

If you want to add a box shadow in that color use:

Here you see how a box with a 4 pixel `rgb(245, 70, 129)` colored shadow looks like.

```
.boxshadow{ -moz-box-shadow:4px 4px 4px  
4px rgb(245, 70, 129); -webkit-box-  
shadow:4px 4px 4px 4px rgb(245, 70, 129);  
box-shadow:4px 4px 4px 4px rgb(245, 70,  
129) }
```

Background

The CSS property to change the background color of an element to Android 4294264449 is called "background". The background property can be set on classes, ids or directly on the HTML element.

```
.background, #background, body{  
background: rgb(245, 70, 129) }
```

If only the background color should be changed can be used:

```
.background{ background-color: rgb(245, 70,  
129) }
```

This example shows the color as background, it is applied via the CSS property "background".

To optimize and compress your CSS code, you can use our [online CSS compressor and optimizer](#) based on csstidy. If you want to create a linear or radial gradient as background or border, check our [CSS Gradient Generator](#).

Hey! You found this booklet interesting? Support Converting Colors with the new Membership Option!

The pro membership hides all ads, plus gives you double the colors in the color bucket, and more awesome pro features!

[Learn more, Memberships starting at \\$2.50/m!](#)

**Follow me
on Twitter!**

@ConvertingColor