

Converting Colors

Android(4294265199)

Have a look what the booklet for
Android(4294265199) contains.

Android(4294265199)	3
<i>Conversions</i>	4
<i>Details</i>	6
<i>Harmonies</i>	11
<i>Previews</i>	23
<i>Color Blindness Simulation</i>	26
<i>CSS Examples</i>	29

Color

Android(4294265199)

Conversions

Conversions Part 1

Format	Color
Hex	F5496F
RGB	245, 73, 111
RGB Percent	96%, 29%, 44%
CMY	0.0392, 0.7137, 0.5647
CMYK	0.00, 0.70, 0.55, 0.04
HSL	347°, 90%, 62%
HSV	347°, 70%, 96%
XYZ	42.9080, 25.3253, 17.6657
YIQ	128.7600, 90.3140, 48.2820

Conversions

Conversions Part 2

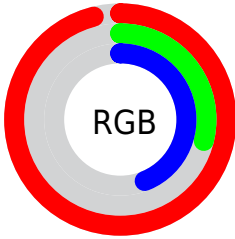
Format	Color
R_{YB}	245, 73, 111
Decimal	16075119
CIE _{Lab}	57.39, 67.22, 17.45
CIE _{LCh}	57, 69.451, 14.555
Yxy	25.3253, 0.4995, 0.2948
Android (android.graphics.Color)	4294265199 (0xFFFF5496F)
YUV	128.7600, -8.7557, 101.9425
Hunter-Lab	50.3242, 64.1272, 14.4139

Details

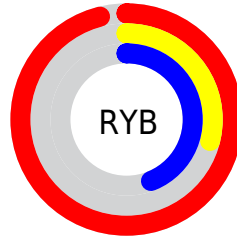
The Android color **4294265199** is a dark color, and the websafe version is hex **FF3366**. The color can be described as middle washed rose. A complement of this color would be **4283037135**, and the grayscale version is **4286677377**.

A 20% lighter version of the original color is **4294935714**, and **4290117696** is the 20% darker color. If you saturate the color by 10%, you get **4294259036**, and if you desaturate by 10%, it is **4294271618**.

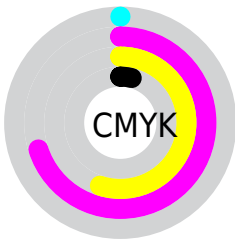
Distribution



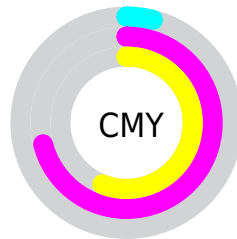
- Red (96%)
- Green (29%)
- Blue (44%)



- Red (96%)
- Yellow (29%)
- Blue (44%)



- Cyan (0%)
- Magenta (70%)
- Yellow (55%)
- Black (4%)



- Cyan (4%)
- Magenta (71%)
- Yellow (56%)

Brightness & Saturation Gradients

These gradients show how the Android color 4294265199 changes by changing the brightness by 10 percent. The first figure shows a shift by +10% for each color and the second figure -10%.

Similar to the brightness gradients but the following saturation gradients show a change of the Android color 4294265199 by changing the saturation by 10% instead.

 4294265199

 4294265199

4294967295

 4292224599

 4294935714

 4290117696

 4294943165

 4288151594

 4294950617

 4286119959

 4294958325

 4284153857

 4294966015

 4282253315

 4279894017

 4278190080

 4294265199

 4294265199

 4294259036

 4294271618

 4294252617

 4294277781

 4294246454

 4294284200

 4294290363

 4294296782

 4294302946

 4294309365

 4294311935

Harmonies

Analogous

The Analogous color harmony consists of three colors that are next to each other on the color wheel.



4293283756



4294265199



4293222454

Triad

The Triadic color harmony groups three colors that are evenly spaced from another and form a triangle on the color wheel.



4294265199



4282424617



4278229759

Complementary

The Complementary color scheme is a pair of colors which are on the opposite of each other on the color wheel.



4294265199



4283037135

Split Complementary

Split-complementary colors differ from the complementary color scheme. The scheme consists of three colors, the original color and two neighbors of the complement color.



4278232030



4294265199



4278231911

Square

The Square scheme is like the rectangle color scheme, but the four colors are evenly spaced on the color wheel.



4294265199



4287270912



4278232487



4281567231

Rectangle

The Rectangle color scheme consists of four colors that form a rectangle on the color wheel.



4294265199



4291719947



4278232487



4278230775

Sweetspot

The Sweet Spot groups the original color and five complimentary colors.



4294265199



4294953429



4291643893



4286603367



4278190080



4286611584

Same Dimension

The Same Dimension uses a secret algorithm to generate beautiful new colors.



4294265199



4294912344



4294276937



4286213745



4290379817



4282056717

Inverse Universe

The Inverse Universe completely reimagines the original color for something new.



4294265199



4294912344



4283025397



4286213745



4290379817



4282056717

Previews

White Background



This preview shows how the Android color 4294265199 looks on a white background.

Color Contrast Check

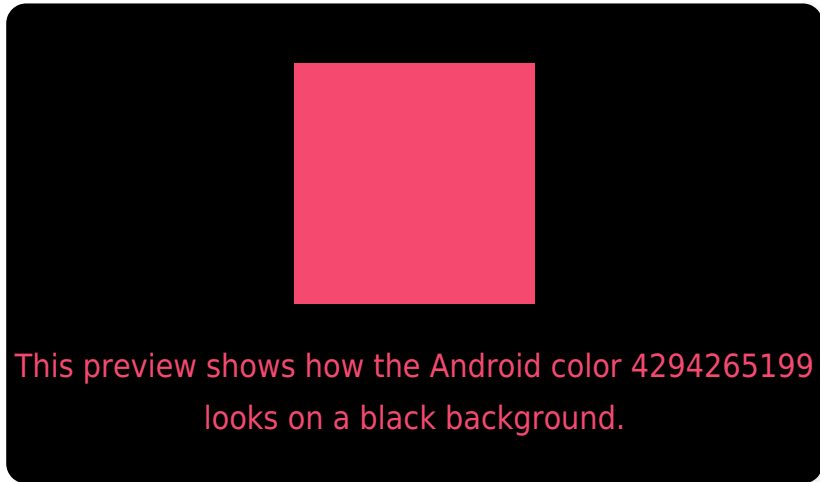
Large Text (above 18pt) WCAG AA ✓ Pass

Any Text WCAG AA ✗ Fail

Large Text (above 18pt) WCAG AAA ✗ Fail

Any Text WCAG AAA ✗ Fail

Black Background



Color Contrast Check

Large Text (above 18pt) WCAG AA ✓ Pass

Any Text WCAG AA ✓ Pass

Large Text (above 18pt) WCAG AAA ✓ Pass

Any Text WCAG AAA × Fail

If you want to check with other color combinations, try the [Color Contrast Checker](#).

Android 4294265199 Background



This preview shows how black text looks on a background with the Android color 4294265199.

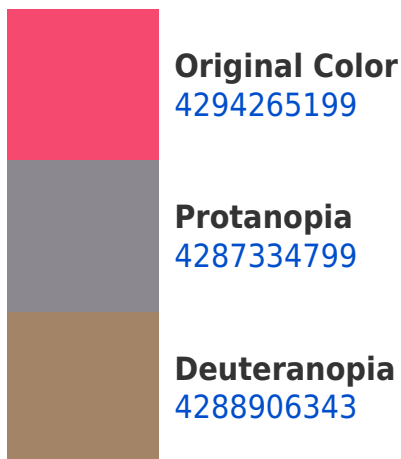


This preview shows how white text looks on a background with the Android color 4294265199.

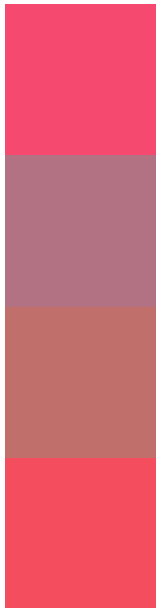
Color Blindness Simulation

Color vision deficiency is a very complex topic, and I could not describe the different causes any better than Wikipedia does, so if you want to learn more, you should check out their [article about color blindness](#).

Dichromacy



Trichromacy



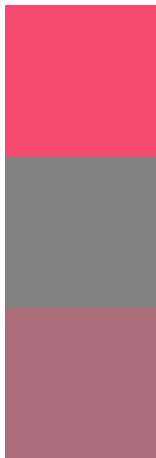
Original Color
4294265199

Protanomaly
4289884803

Deuteranomaly
4290867050

Tritanomaly
4294200669

Monochromacy



Original Color
4294265199

Achromatopsia
4286677377

Achromatomaly
4289424762

CSS Examples

Text

The CSS property to change the color of the text to Android 4294265199 is called "color". The color property can be set on classes, ids or directly on the HTML element.

This example shows how text in the color `rgb(245, 73, 111)` looks like.

```
.text, #text, p{  
    color:rgb(245, 73, 111)  
}
```

If you want to add a text shadow in that color use the text-shadow property, you can generate a text shadow directly with our [CSS Text Shadow Generator](#).

Here you see how black text with a 4 pixel rgb(245, 73, 111) colored shadow looks like.

```
.shadow{ text-shadow: 4px 4px 2px rgb(245, 73, 111) }
```

Border

The CSS property to change the border of an element to Android 4294265199 is called "border". The border property can be set on classes, ids or directly on the HTML element.

This example shows the color as border, it can be applied via the CSS property "border" or "border-color".

```
.border, #border, table{ border:4px solid rgb(245, 73, 111) }
```

If only the border color should be changed use the property border-color.

```
.border{ border-color:rgb(245, 73, 111) }
```

If you want to add a box shadow in that color use:

Here you see how a box with a 4 pixel rgb(245, 73, 111) colored shadow looks like.

```
.boxshadow{ -moz-box-shadow:4px 4px 4px  
4px rgb(245, 73, 111); -webkit-box-  
shadow:4px 4px 4px 4px rgb(245, 73, 111);  
box-shadow:4px 4px 4px 4px rgb(245, 73,  
111) }
```

Background

The CSS property to change the background color of an element to Android 4294265199 is called "background". The background property can be set on classes, ids or directly on the HTML element.

```
.background, #background, body{  
background: rgb(245, 73, 111) }
```

If only the background color should be changed can be used:

```
.background{ background-color: rgb(245, 73,  
111) }
```

This example shows the color as background, it is applied via the CSS property "background".

To optimize and compress your CSS code, you can use our [online CSS compressor and optimizer](#) based on csstidy. If you want to create a linear or radial gradient as background or border, check our [CSS Gradient Generator](#).

Hey! You found this booklet interesting? Support Converting Colors with the new Membership Option!

The pro membership hides all ads, plus gives you double the colors in the color bucket, and more awesome pro features!

[Learn more, Memberships starting at \\$2.50/m!](#)

**Follow me
on Twitter!**

@ConvertingColor