

Converting Colors

Android(4294270340)

Have a look what the booklet for
Android(4294270340) contains.

Android(4294270340)	3
<i>Conversions</i>	4
<i>Details</i>	6
<i>Harmonies</i>	11
<i>Previews</i>	23
<i>Color Blindness Simulation</i>	26
<i>CSS Examples</i>	29

Color

Android(4294270340)

Conversions

Conversions Part 1

Format	Color
Hex	F55D84
RGB	245, 93, 132
RGB Percent	96%, 36%, 52%
CMY	0.0392, 0.6353, 0.4824
CMYK	0.00, 0.62, 0.46, 0.04
HSL	345°, 88%, 66%
HSV	345°, 62%, 96%
XYZ	45.7354, 28.9071, 24.9989
YIQ	142.8940, 78.0730, 44.3530

Conversions

Conversions Part 2

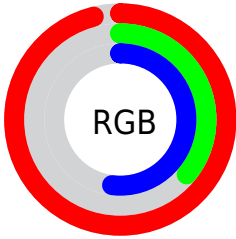
Format	Color
R_{YB}	245, 93, 132
Decimal	16080260
CIE _{Lab}	60.70, 61.21, 9.77
CIE _{LCh}	61, 61.983, 9.073
Yxy	28.9071, 0.4590, 0.2901
Android (android.graphics.Color)	4294270340 (0xFFFF55D84)
YUV	142.8940, -5.3707, 89.5470
Hunter-Lab	53.7653, 57.7514, 10.0681

Details

The Android color **4294270340** is a light color, and the websafe version is hex **FF6699**. The color can be described as light muted rose. A complement of this color would be **4284347854**, and the grayscale version is **4287598479**.

A 20% lighter version of the original color is **4294940345**, and **4290256211** is the 20% darker color. If you saturate the color by 10%, you get **4294263922**, and if you desaturate by 10%, it is **4294276502**.

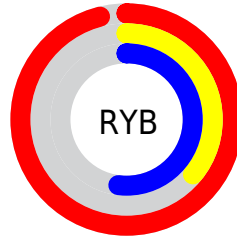
Distribution



Red (96%)

Green (36%)

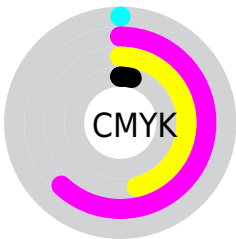
Blue (52%)



Red (96%)

Yellow (36%)

Blue (52%)

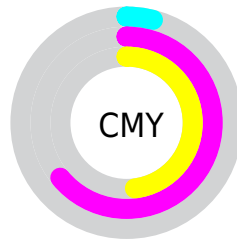


Cyan (0%)

Magenta (62%)

Yellow (46%)

Black (4%)



Cyan (4%)

Magenta (64%)

Yellow (48%)

Brightness & Saturation Gradients

These gradients show how the Android color 4294270340 changes by changing the brightness by 10 percent. The first figure shows a shift by +10% for each color and the second figure -10%.

Similar to the brightness gradients but the following saturation gradients show a change of the Android color 4294270340 by changing the saturation by 10% instead.

 4294270340

 4294270340

4294967295

 4292231275

 4294940345

 4290256211

 4294947540

 4288282684

 4294954993

 4286316583

 4294962687

 4284416018

 4282646531

 4280483841

 4278190080

 4294270340

 4294270340

 4294263922

 4294276502

 4294257760

 4294282920

 4294251341

 4294289083

 4294246463

 4294295501

 4294301663

 4294308081

 4294311935

Harmonies

Analogous

The Analogous color harmony consists of three colors that are next to each other on the color wheel.



4292961723



4294270340



4293684048

Triad

The Triadic color harmony groups three colors that are evenly spaced from another and form a triangle on the color wheel.



4294270340



4284719670



4278232056

Complementary

The Complementary color scheme is a pair of colors which are on the opposite of each other on the color wheel.



4294270340



4284347854

Split Complementary

Split-complementary colors differ from the complementary color scheme. The scheme consists of three colors, the original color and two neighbors of the complement color.



4278233814



4294270340



4278233705

Square

The Square scheme is like the rectangle color scheme, but the four colors are evenly spaced on the color wheel.



4294270340



4288648467



4278234274



4281701375

Rectangle

The Rectangle color scheme consists of four colors that form a rectangle on the color wheel.



4294270340



4292442674



4278234274



4278232816

Sweetspot

The Sweet Spot groups the original color and five complimentary colors.



4294270340



4294954971



4291583477



4286603882



4278190080



4286611584

Same Dimension

The Same Dimension uses a secret algorithm to generate beautiful new colors.



4294270340



4294918771



4294279261



4286213745



4290379824



4282056719

Inverse Universe

The Inverse Universe completely reimagines the original color for something new.



4294270340



4294918771



4284338933



4286213745



4290379824



4282056719

Previews

White Background



This preview shows how the Android color 4294270340 looks on a white background.

Color Contrast Check

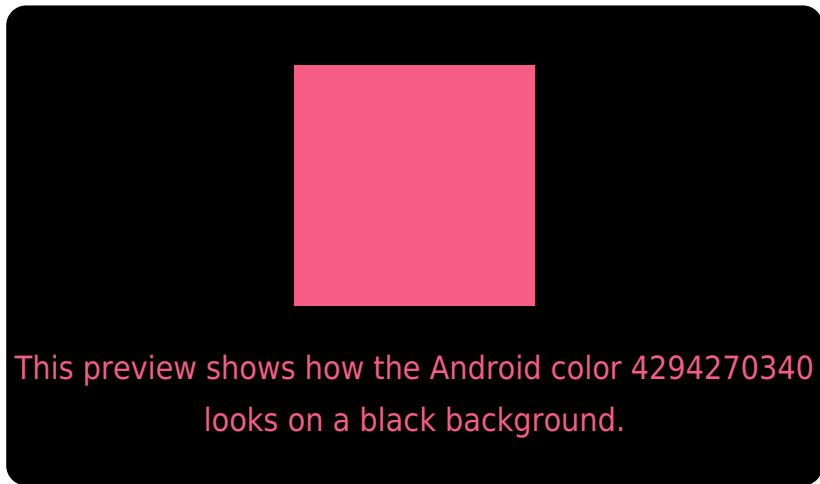
Large Text (above 18pt) WCAG AA ✓ Pass

Any Text WCAG AA ✗ Fail

Large Text (above 18pt) WCAG AAA ✗ Fail

Any Text WCAG AAA ✗ Fail

Black Background



Color Contrast Check

Large Text (above 18pt) WCAG AA ✓ Pass

Any Text WCAG AA ✓ Pass

Large Text (above 18pt) WCAG AAA ✓ Pass

Any Text WCAG AAA × Fail

If you want to check with other color combinations, try the [Color Contrast Checker](#).

Android 4294270340 Background



This preview shows how black text looks on a background with the Android color 4294270340.



This preview shows how white text looks on a background with the Android color 4294270340.

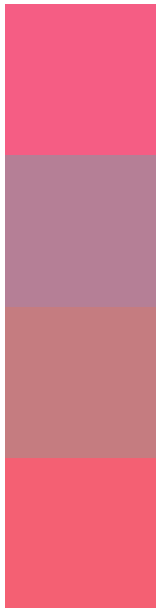
Color Blindness Simulation

Color vision deficiency is a very complex topic, and I could not describe the different causes any better than Wikipedia does, so if you want to learn more, you should check out their [article about color blindness](#).

Dichromacy



Trichromacy



Original Color
4294270340

Protanomaly
4290084758

Deuteranomaly
4291132544

Tritanomaly
4294205555

Monochromacy



Original Color
4294270340

Achromatopsia
4287598479

Achromatomaly
4290018699

CSS Examples

Text

The CSS property to change the color of the text to Android 4294270340 is called "color". The color property can be set on classes, ids or directly on the HTML element.

This example shows how text in the color `rgb(245, 93, 132)` looks like.

```
.text, #text, p{  
    color:rgb(245, 93, 132)  
}
```

If you want to add a text shadow in that color use the text-shadow property, you can generate a text shadow directly with our [CSS Text Shadow Generator](#).

Here you see how black text with a 4 pixel rgb(245, 93, 132) colored shadow looks like.

```
.shadow{ text-shadow: 4px 4px 2px rgb(245, 93, 132) }
```

Border

The CSS property to change the border of an element to Android 4294270340 is called "border". The border property can be set on classes, ids or directly on the HTML element.

This example shows the color as border, it can be applied via the CSS property "border" or "border-color".

```
.border, #border, table{ border:4px solid rgb(245, 93, 132) }
```

If only the border color should be changed use the property `border-color`.

```
.border{ border-color:rgb(245, 93, 132) }
```

If you want to add a box shadow in that color use:

Here you see how a box with a 4 pixel `rgb(245, 93, 132)` colored shadow looks like.

```
.boxshadow{ -moz-box-shadow:4px 4px 4px 4px rgb(245, 93, 132); -webkit-box-shadow:4px 4px 4px 4px rgb(245, 93, 132); box-shadow:4px 4px 4px 4px rgb(245, 93, 132) }
```

Background

The CSS property to change the background color of an element to Android 4294270340 is called "background". The background property can be set on classes, ids or directly on the HTML element.

```
.background, #background, body{  
background: rgb(245, 93, 132) }
```

If only the background color should be changed can be used:

```
.background{ background-color: rgb(245, 93,  
132) }
```

This example shows the color as background, it is applied via the CSS property "background".

To optimize and compress your CSS code, you can use our [online CSS compressor and optimizer](#) based on csstidy. If you want to create a linear or radial gradient as background or border, check our [CSS Gradient Generator](#).

Hey! You found this booklet interesting? Support Converting Colors with the new Membership Option!

The pro membership hides all ads, plus gives you double the colors in the color bucket, and more awesome pro features!

[Learn more, Memberships starting at \\$2.50/m!](#)

**Follow me
on Twitter!**

@ConvertingColor