

# Converting Colors

Android(4294275485)

Have a look what the booklet for  
Android(4294275485) contains.

<b>Android(4294275485)</b> .....	3
<i><b>Conversions</b></i> .....	4
<i><b>Details</b></i> .....	6
<i><b>Harmonies</b></i> .....	11
<i><b>Previews</b></i> .....	23
<i><b>Color Blindness Simulation</b></i> .....	26
<i><b>CSS Examples</b></i> .....	29

# **Color**

**Android(4294275485)**

# Conversions

## Conversions Part 1

Format	Color
Hex	F5719D
RGB	245, 113, 157
RGB Percent	96%, 44%, 62%
CMY	0.0392, 0.5569, 0.3843
CMYK	0.00, 0.54, 0.36, 0.04
HSL	340°, 87%, 70%
HSV	340°, 54%, 96%
XYZ	49.6471, 33.6571, 35.7781
YIQ	157.4840, 64.5480, 41.6680

# Conversions

## Conversions Part 2

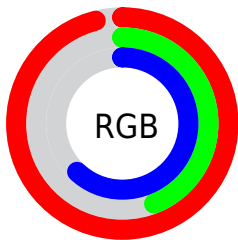
<b>Format</b>	<b>Color</b>
<b>R<sub>YB</sub></b>	245, 113, 157
Decimal	16085405
CIE <sub>Lab</sub>	64.69, 54.88, 1.11
CIE <sub>LCh</sub>	65, 54.887, 1.157
Yxy	33.6571, 0.4169, 0.2826
Android (android.graphics.Color)	4294275485 (0xFFFF5719D)
YUV	157.4840, -0.2386, 76.7515
Hunter-Lab	58.0147, 51.2289, 4.0457

# Details

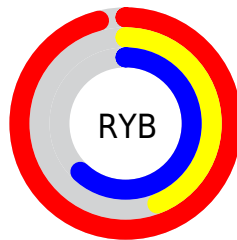
The Android color `4294275485` is a light color, and the websafe version is hex `FF6699`. A complement of this color would be `4285658569`, and the grayscale version is `4288519581`.

A 20% lighter version of the original color is `4294945235`, and `4290328938` is the 20% darker color. If you saturate the color by 10%, you get `4294269325`, and if you desaturate by 10%, it is `4294281901`.

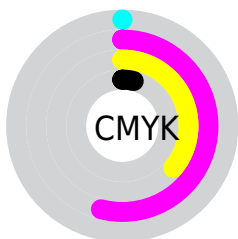
# Distribution



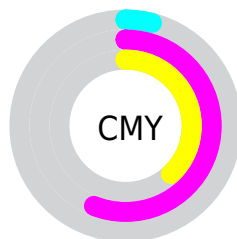
- Red (96%)
- Green (44%)
- Blue (62%)



- Red (96%)
- Yellow (44%)
- Blue (62%)



- Cyan (0%)
- Magenta (54%)
- Yellow (36%)
- Black (4%)



- Cyan (4%)
- Magenta (56%)
- Yellow (38%)

# Brightness & Saturation Gradients

These gradients show how the Android color 4294275485 changes by changing the brightness by 10 percent. The first figure shows a shift by +10% for each color and the second figure -10%.

Similar to the brightness gradients but the following saturation gradients show a change of the Android color 4294275485 by changing the saturation by 10% instead.



 4294275485

 4294275485

4294967295

 4292302211

 4294945235

 4290328938

 4294952432

 4288420178

 4294959871

 4286513211

 4284678182

 4282843152

 4281073665

 4278190080

 4294275485

 4294275485

 4294269325

 4294281901

 4294262908

 4294288062

 4294256748

 4294294478

 4294250332

 4294300638

 4294246482

 4294307055

 4294311935

# Harmonies

## Analogous

The Analogous color harmony consists of three colors that are next to each other on the color wheel.



4292508877



4294275485



4294211437

# Triad

The Triadic color harmony groups three colors that are evenly spaced from another and form a triangle on the color wheel.



4294275485



4286884164



4278234866

# Complementary

The Complementary color scheme is a pair of colors which are on the opposite of each other on the color wheel.



4294275485



4285658569

# Split Complementary

Split-complementary colors differ from the complementary color scheme. The scheme consists of three colors, the original color and two neighbors of the complement color.



4278236366



4294275485



4282364267

# Square

The Square scheme is like the rectangle color scheme, but the four colors are evenly spaced on the color wheel.



4294275485



4290157365



4278236573



4281639679

# Rectangle

The Rectangle color scheme consists of four colors that form a rectangle on the color wheel.



4294275485



4293362258



4278236573



4278235624



# Sweetspot

The Sweet Spot groups the original color and five complimentary colors.



4294275485



4294956772



4291391989



4286605167



4278190080



4286611584



# Same Dimension

The Same Dimension uses a secret algorithm to generate beautiful new colors.



4294275485



4294924689



4294281073



4286213746



4290379838



4282056724



# Inverse Universe

The Inverse Universe completely reimagines the original color for something new.



4294275485



4294924689



4285652981



4286213746



4290379838



4282056724



# Previews

## White Background



This preview shows how the Android color 4294275485 looks on a white background.

## Color Contrast Check

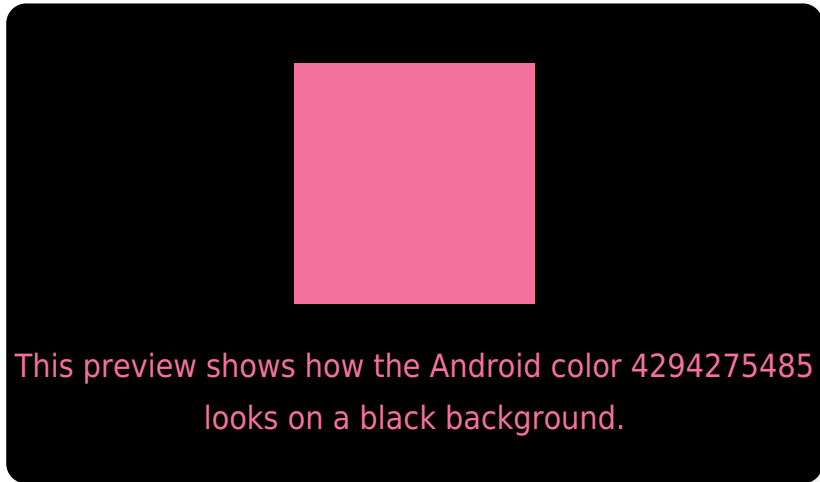
Large Text (above 18pt) WCAG AA × Fail

Any Text WCAG AA × Fail

Large Text (above 18pt) WCAG AAA × Fail

Any Text WCAG AAA × Fail

# Black Background



## Color Contrast Check

Large Text (above 18pt) WCAG AA ✓ Pass

Any Text WCAG AA ✓ Pass

Large Text (above 18pt) WCAG AAA ✓ Pass

Any Text WCAG AAA ✓ Pass

If you want to check with other color combinations, try the [Color Contrast Checker](#).



# Android 4294275485 Background



This preview shows how black text looks on a background with the Android color 4294275485.



This preview shows how white text looks on a background with the Android color 4294275485.

# Color Blindness Simulation

Color vision deficiency is a very complex topic, and I could not describe the different causes any better than Wikipedia does, so if you want to learn more, you should check out their [article about color blindness](#).

## Dichromacy



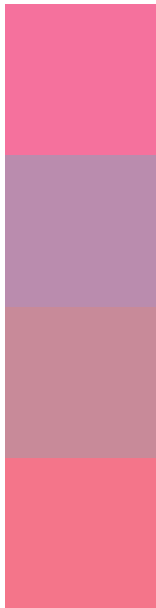
**Original Color**  
4294275485

**Protanopia**  
4288191671

**Deuteranopia**  
4289697943



# Trichromacy



**Original Color**  
4294275485

**Protanomaly**  
4290415790

**Deuteranomaly**  
4291332761

**Tritanomaly**  
4294210954

# Monochromacy



**Original Color**  
4294275485

**Achromatopsia**  
4288519581

**Achromatomaly**  
4290612637

# CSS Examples

## Text

The CSS property to change the color of the text to Android 4294275485 is called "color". The color property can be set on classes, ids or directly on the HTML element.

This example shows how text in the color `rgb(245, 113, 157)` looks like.

```
.text, #text, p{  
    color:rgb(245, 113, 157)  
}
```

If you want to add a text shadow in that color use the text-shadow property, you can generate a text shadow directly with our [CSS Text Shadow Generator](#).

Here you see how black text with a 4 pixel rgb(245, 113, 157) colored shadow looks like.

```
.shadow{ text-shadow: 4px 4px 2px rgb(245, 113, 157) }
```

## Border

The CSS property to change the border of an element to Android 4294275485 is called "border". The border property can be set on classes, ids or directly on the HTML element.

This example shows the color as border, it can be applied via the CSS property "border" or "border-color".

```
.border, #border, table{ border:4px solid rgb(245, 113, 157) }
```

If only the border color should be changed use the property `border-color`.

```
.border{ border-color:rgb(245, 113, 157) }
```

If you want to add a box shadow in that color use:

Here you see how a box with a 4 pixel `rgb(245, 113, 157)` colored shadow looks like.

```
.boxshadow{ -moz-box-shadow:4px 4px 4px  
4px rgb(245, 113, 157); -webkit-box-  
shadow:4px 4px 4px 4px rgb(245, 113, 157);  
box-shadow:4px 4px 4px 4px rgb(245, 113,  
157) }
```

# Background

The CSS property to change the background color of an element to Android 4294275485 is called "background". The background property can be set on classes, ids or directly on the HTML element.

```
.background, #background, body{  
background: rgb(245, 113, 157) }
```

If only the background color should be changed can be used:

```
.background{ background-color: rgb(245,  
113, 157) }
```

This example shows the color as background, it is applied via the CSS property "background".

To optimize and compress your CSS code, you can use our [online CSS compressor and optimizer](#) based on csstidy. If you want to create a linear or radial gradient as background or border, check our [CSS Gradient Generator](#).



Hey! You found this booklet interesting? Support Converting Colors with the new Membership Option!

The pro membership hides all ads, plus gives you double the colors in the color bucket, and more awesome pro features!

**[Learn more, Memberships starting at \\$2.50/m!](#)**

**Follow me  
on Twitter!**

@ConvertingColor