

Converting Colors

Android(4294287734)

Have a look what the booklet for
Android(4294287734) contains.

Android(4294287734)	3
<i>Conversions</i>	4
<i>Details</i>	6
<i>Harmonies</i>	11
<i>Previews</i>	23
<i>Color Blindness Simulation</i>	26
<i>CSS Examples</i>	29

Color

Android(4294287734)

Conversions

Conversions Part 1

Format	Color
Hex	F5A176
RGB	245, 161, 118
RGB Percent	96%, 63%, 46%
CMY	0.0392, 0.3686, 0.5373
CMYK	0.00, 0.34, 0.52, 0.04
HSL	20°, 86%, 71%
HSV	20°, 52%, 96%
XYZ	53.6711, 46.2102, 23.2302
YIQ	181.2140, 63.8670, 4.4350

Conversions

Conversions Part 2

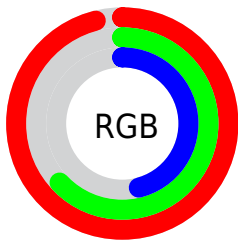
Format	Color
R_{YB}	245, 183, 118
Decimal	16097654
CIE _{Lab}	73.68, 26.71, 35.12
CIE _{LCh}	74, 44.123, 52.739
Yxy	46.2102, 0.4360, 0.3754
Android (android.graphics.Color)	4294287734 (0xFFFF5A176)
YUV	181.2140, -31.1645, 55.9403
Hunter-Lab	67.9781, 21.9703, 27.3234

Details

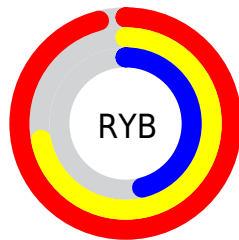
The Android color **4294287734** is a light color, and the websafe version is hex **FF9966**. A complement of this color would be **4285975285**, and the grayscale version is **4290098613**.

A 20% lighter version of the original color is **4294957227**, and **4290342213** is the 20% darker color. If you saturate the color by 10%, you get **4294283614**, and if you desaturate by 10%, it is **4294291855**.

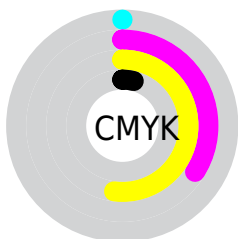
Distribution



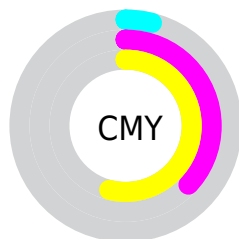
- Red (96%)
- Green (63%)
- Blue (46%)



- Red (96%)
- Yellow (72%)
- Blue (46%)



- Cyan (0%)
- Magenta (34%)
- Yellow (52%)
- Black (4%)



- Cyan (4%)
- Magenta (37%)
- Yellow (54%)

Brightness & Saturation Gradients

These gradients show how the Android color 4294287734 changes by changing the brightness by 10 percent. The first figure shows a shift by +10% for each color and the second figure -10%.

Similar to the brightness gradients but the following saturation gradients show a change of the Android color 4294287734 by changing the saturation by 10% instead.

 4294287734

 4294287734

4294967295

 4292314717

 4294957227

 4290342213

 4294964678

 4288435245

 4294967266

 4286594071

 4284753152

 4282912000

 4281270272

 4278190080

 4294287734

 4294287734

 4294283614

 4294291855

 4294279493

 4294295975

 4294275116

 4294300352

 4294270996

 4294304472

 4294267648

 4294308593

 4294311935

Harmonies

Analogous

The Analogous color harmony consists of three colors that are next to each other on the color wheel.



4294940312



4294287734



4292325220

Triad

The Triadic color harmony groups three colors that are evenly spaced from another and form a triangle on the color wheel.



4294287734



4282698409



4289375999

Complementary

The Complementary color scheme is a pair of colors which are on the opposite of each other on the color wheel.



4294287734



4285975285

Split Complementary

Split-complementary colors differ from the complementary color scheme. The scheme consists of three colors, the original color and two neighbors of the complement color.



4284660991



4294287734



4278242003

Square

The Square scheme is like the rectangle color scheme, but the four colors are evenly spaced on the color wheel.



4294287734



4286629251



4278241012



4292780007

Rectangle

The Rectangle color scheme consists of four colors that form a rectangle on the color wheel.



4294287734



4290689124



4278241012



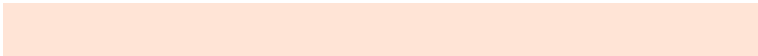
4288001023

Sweetspot

The Sweet Spot groups the original color and five complimentary colors.



4294287734



4294960342



4294276811



4286607207



4278190080



4286611584

Same Dimension

The Same Dimension uses a secret algorithm to generate beautiful new colors.



4294287734



4294940257



4294303862



4286214766



4290395904



4282061824

Inverse Universe

The Inverse Universe completely reimagines the original color for something new.



4285975285



4284598783



4285959157



4285429370



4278221754



4278200123

Previews

White Background



This preview shows how the Android color 4294287734 looks on a white background.

Color Contrast Check

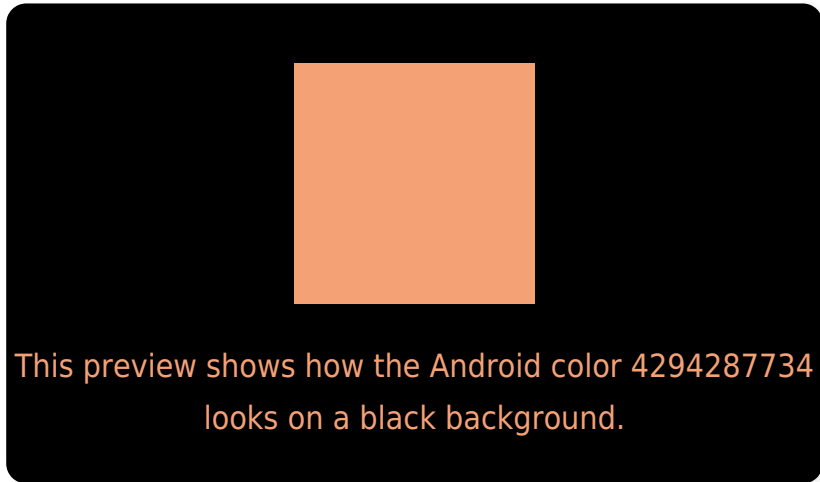
Large Text (above 18pt) WCAG AA × Fail

Any Text WCAG AA × Fail

Large Text (above 18pt) WCAG AAA × Fail

Any Text WCAG AAA × Fail

Black Background



Color Contrast Check

Large Text (above 18pt) WCAG AA ✓ Pass

Any Text WCAG AA ✓ Pass

Large Text (above 18pt) WCAG AAA ✓ Pass

Any Text WCAG AAA ✓ Pass

If you want to check with other color combinations, try the [Color Contrast Checker](#).

Android 4294287734 Background



This preview shows how black text looks on a background with the Android color 4294287734.




This preview shows how white text looks on a background with the Android color 4294287734.

Color Blindness Simulation

Color vision deficiency is a very complex topic, and I could not describe the different causes any better than Wikipedia does, so if you want to learn more, you should check out their [article about color blindness](#).

Dichromacy





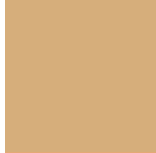
Tritanopia
4294548390

Trichromacy



Original Color

4294287734



Protanomaly

4292259451



Deuteranomaly

4293175669



Tritanomaly

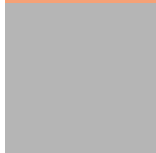
4294483349

Monochromacy



Original Color

4294287734



Achromatopsia

4290098613



Achromatomaly

4291604126

CSS Examples

Text

The CSS property to change the color of the text to Android 4294287734 is called "color". The color property can be set on classes, ids or directly on the HTML element.

This example shows how text in the color `rgb(245, 161, 118)` looks like.

```
.text, #text, p{  
    color:rgb(245, 161, 118)  
}
```

If you want to add a text shadow in that color use the text-shadow property, you can generate a text shadow directly with our [CSS Text Shadow Generator](#).

Here you see how black text with a 4 pixel rgb(245, 161, 118) colored shadow looks like.

```
.shadow{ text-shadow: 4px 4px 2px rgb(245, 161, 118) }
```

Border

The CSS property to change the border of an element to Android 4294287734 is called "border". The border property can be set on classes, ids or directly on the HTML element.

This example shows the color as border, it can be applied via the CSS property "border" or "border-color".

```
.border, #border, table{ border:4px solid rgb(245, 161, 118) }
```

If only the border color should be changed use the property `border-color`.

```
.border{ border-color:rgb(245, 161, 118) }
```

If you want to add a box shadow in that color use:

Here you see how a box with a 4 pixel `rgb(245, 161, 118)` colored shadow looks like.

```
.boxshadow{ -moz-box-shadow:4px 4px 4px  
4px rgb(245, 161, 118); -webkit-box-  
shadow:4px 4px 4px 4px rgb(245, 161, 118);  
box-shadow:4px 4px 4px 4px rgb(245, 161,  
118) }
```

Background

The CSS property to change the background color of an element to Android 4294287734 is called "background". The background property can be set on classes, ids or directly on the HTML element.

```
.background, #background, body{  
background: rgb(245, 161, 118) }
```

If only the background color should be changed can be used:

```
.background{ background-color: rgb(245,  
161, 118) }
```

This example shows the color as background, it is applied via the CSS property "background".

To optimize and compress your CSS code, you can use our [online CSS compressor and optimizer](#) based on csstidy. If you want to create a linear or radial gradient as background or border, check our [CSS Gradient Generator](#).

Hey! You found this booklet interesting? Support Converting Colors with the new Membership Option!

The pro membership hides all ads, plus gives you double the colors in the color bucket, and more awesome pro features!

[Learn more, Memberships starting at \\$2.50/m!](#)

**Follow me
on Twitter!**

@ConvertingColor