

Converting Colors

Android(4294290623)

Have a look what the booklet for
Android(4294290623) contains.

Android(4294290623)	3
<i>Conversions</i>	4
<i>Details</i>	6
<i>Harmonies</i>	11
<i>Previews</i>	23
<i>Color Blindness Simulation</i>	26
<i>CSS Examples</i>	29

Color

Android(4294290623)

Conversions

Conversions Part 1

Format	Color
Hex	F5ACBF
RGB	245, 172, 191
RGB Percent	96%, 67%, 75%
CMY	0.0392, 0.3255, 0.2510
CMYK	0.00, 0.30, 0.22, 0.04
HSL	344°, 78%, 82%
HSV	344°, 30%, 96%
XYZ	61.8127, 52.6791, 56.2004
YIQ	195.9930, 37.4090, 21.3850

Conversions

Conversions Part 2

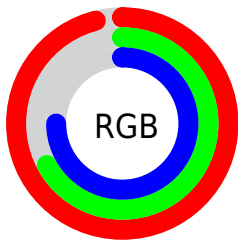
Format	Color
R_{YB}	245, 172, 191
Decimal	16100543
CIE _{Lab}	77.69, 29.38, 1.09
CIE _{LCh}	78, 29.400, 2.134
Yxy	52.6791, 0.3621, 0.3086
Android (android.graphics.Color)	4294290623 (0xFF5ACBF)
YUV	195.9930, -2.4615, 42.9791
Hunter-Lab	72.5804, 25.0029, 4.8968

Details

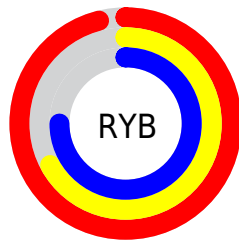
The Android color `4294290623` is a light color, and the websafe version is hex `FFCCCC`. A complement of this color would be `4289525218`, and the grayscale version is `4291085508`.

A 20% lighter version of the original color is `4294960375`, and `4290475914` is the 20% darker color. If you saturate the color by 10%, you get `4294284461`, and if you desaturate by 10%, it is `4294297041`.

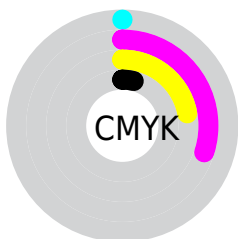
Distribution



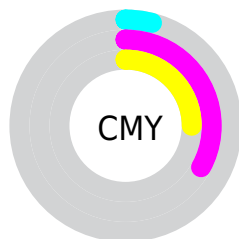
- Red (96%)
- Green (67%)
- Blue (75%)



- Red (96%)
- Yellow (67%)
- Blue (75%)



- Cyan (0%)
- Magenta (30%)
- Yellow (22%)
- Black (4%)



- Cyan (4%)
- Magenta (33%)
- Yellow (25%)

Brightness & Saturation Gradients

These gradients show how the Android color 4294290623 changes by changing the brightness by 10 percent. The first figure shows a shift by +10% for each color and the second figure -10%.

Similar to the brightness gradients but the following saturation gradients show a change of the Android color 4294290623 by changing the saturation by 10% instead.

 4294290623

 4294290623

4294967295

 4292383140

 4294960375


 4290475914

 4288700016

 4286924120

 4285148481

 4283438635

 4281794582

 4280352769

 4278190080

 4294290623

 4294290623

 4294284461

 4294297041

 4294278043

 4294303203

 4294271881

 4294309621

 4294265463

 4294311935

 4294259300

 4294252882

 4294246720

 4294246464

Harmonies

Analogous

The Analogous color harmony consists of three colors that are next to each other on the color wheel.



4293243098



4294290623



4294356644

Triad

The Triadic color harmony groups three colors that are evenly spaced from another and form a triangle on the color wheel.



4294290623



4290037649



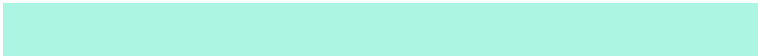
4286434031

Complementary

The Complementary color scheme is a pair of colors which are on the opposite of each other on the color wheel.



4294290623



4289525218

Split Complementary

Split-complementary colors differ from the complementary color scheme. The scheme consists of three colors, the original color and two neighbors of the complement color.



4285386460



4294290623



4288007590

Square

The Square scheme is like the rectangle color scheme, but the four colors are evenly spaced on the color wheel.



4294290623



4292001674



4286173121



4288725750

Rectangle

The Rectangle color scheme consists of four colors that form a rectangle on the color wheel.



4294290623



4293899158



4286173121



4285910250

Sweetspot

The Sweet Spot groups the original color and five complimentary colors.



4294290623



4294961390



4293045493



4286607733



4278190080



4286611584

Same Dimension

The Same Dimension uses a secret algorithm to generate beautiful new colors.



4294290623



4294943675



4294294956



4286213745



4290379824



4282056719

Inverse Universe

The Inverse Universe completely reimagines the original color for something new.



4294290623



4294943675



4289520885



4286213745



4290379824



4282056719

Previews

White Background



This preview shows how the Android color 4294290623 looks on a white background.

Color Contrast Check

Large Text (above 18pt) WCAG AA × Fail

Any Text WCAG AA × Fail

Large Text (above 18pt) WCAG AAA × Fail

Any Text WCAG AAA × Fail

Black Background



This preview shows how the Android color 4294290623 looks on a black background.

Color Contrast Check

Large Text (above 18pt) WCAG AA ✓ Pass

Any Text WCAG AA ✓ Pass

Large Text (above 18pt) WCAG AAA ✓ Pass

Any Text WCAG AAA ✓ Pass

If you want to check with other color combinations, try the [Color Contrast Checker](#).

Android 4294290623 Background



This preview shows how black text looks on a background with the Android color 4294290623.




This preview shows how white text looks on a background with the Android color 4294290623.

Color Blindness Simulation

Color vision deficiency is a very complex topic, and I could not describe the different causes any better than Wikipedia does, so if you want to learn more, you should check out their [article about color blindness](#).

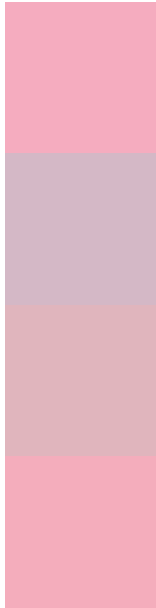
Dichromacy





Tritanopia
4294225338

Trichromacy



Original Color
4294290623

Protanomaly
4292131014

Deuteranomaly
4292916669

Tritanomaly
4294225340

Monochromacy



Original Color
4294290623

Achromatopsia
4291085508

Achromatomaly
4292262850

CSS Examples

Text

The CSS property to change the color of the text to Android 4294290623 is called "color". The color property can be set on classes, ids or directly on the HTML element.

This example shows how text in the color `rgb(245, 172, 191)` looks like.

```
.text, #text, p{  
    color:rgb(245, 172, 191)  
}
```

If you want to add a text shadow in that color use the text-shadow property, you can generate a text shadow directly with our [CSS Text Shadow Generator](#).

Here you see how black text with a 4 pixel rgb(245, 172, 191) colored shadow looks like.

```
.shadow{ text-shadow: 4px 4px 2px rgb(245, 172, 191) }
```

Border

The CSS property to change the border of an element to Android 4294290623 is called "border". The border property can be set on classes, ids or directly on the HTML element.

This example shows the color as border, it can be applied via the CSS property "border" or "border-color".

```
.border, #border, table{ border:4px solid rgb(245, 172, 191) }
```

If only the border color should be changed use the property `border-color`.

```
.border{ border-color:rgb(245, 172, 191) }
```

If you want to add a box shadow in that color use:

Here you see how a box with a 4 pixel `rgb(245, 172, 191)` colored shadow looks like.

```
.boxshadow{ -moz-box-shadow:4px 4px 4px  
4px rgb(245, 172, 191); -webkit-box-  
shadow:4px 4px 4px 4px rgb(245, 172, 191);  
box-shadow:4px 4px 4px 4px rgb(245, 172,  
191) }
```

Background

The CSS property to change the background color of an element to Android 4294290623 is called "background". The background property can be set on classes, ids or directly on the HTML element.

```
.background, #background, body{  
background: rgb(245, 172, 191) }
```

If only the background color should be changed can be used:

```
.background{ background-color: rgb(245,  
172, 191) }
```

This example shows the color as background, it is applied via the CSS property "background".

To optimize and compress your CSS code, you can use our [online CSS compressor and optimizer](#) based on csstidy. If you want to create a linear or radial gradient as background or border, check our [CSS Gradient Generator](#).

Hey! You found this booklet interesting? Support Converting Colors with the new Membership Option!

The pro membership hides all ads, plus gives you double the colors in the color bucket, and more awesome pro features!

[Learn more, Memberships starting at \\$2.50/m!](#)

**Follow me
on Twitter!**

@ConvertingColor