

Converting Colors

Android(4294291907)

Have a look what the booklet for
Android(4294291907) contains.

Android(4294291907)	3
<i>Conversions</i>	4
<i>Details</i>	6
<i>Harmonies</i>	11
<i>Previews</i>	23
<i>Color Blindness Simulation</i>	26
<i>CSS Examples</i>	29

Color

Android(4294291907)

Conversions

Conversions Part 1

Format	Color
Hex	F5B1C3
RGB	245, 177, 195
RGB Percent	96%, 69%, 76%
CMY	0.0392, 0.3059, 0.2353
CMYK	0.00, 0.28, 0.20, 0.04
HSL	344°, 77%, 83%
HSV	344°, 28%, 96%
XYZ	63.2287, 54.7969, 58.8741
YIQ	199.3840, 34.7500, 20.0140

Conversions

Conversions Part 2

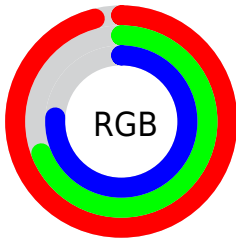
Format	Color
R _Y B	245, 177, 195
Decimal	16101827
CIE Lab	78.92, 27.32, 0.73
CIE LCh	79, 27.331, 1.522
Yxy	54.7969, 0.3574, 0.3098
Android (android.graphics.Color)	4294291907 (0xFF5B1C3)
YUV	199.3840, -2.1613, 40.0052
Hunter-Lab	74.0249, 22.9228, 4.6624

Details

The Android color `4294291907` is a light color, and the websafe version is hex `FFCCCC`. A complement of this color would be `4289852899`, and the grayscale version is `4291282887`.

A 20% lighter version of the original color is `4294961659`, and `4290542733` is the 20% darker color. If you saturate the color by 10%, you get `4294285745`, and if you desaturate by 10%, it is `4294298325`.

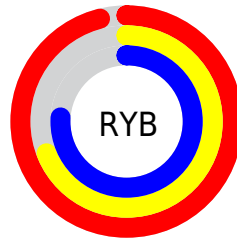
Distribution



Red (96%)

Green (69%)

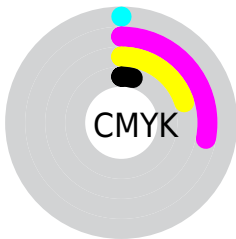
Blue (76%)



Red (96%)

Yellow (69%)

Blue (76%)

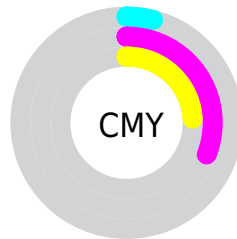


Cyan (0%)

Magenta (28%)

Yellow (20%)

Black (4%)



Cyan (4%)

Magenta (31%)

Yellow (24%)

Brightness & Saturation Gradients

These gradients show how the Android color 4294291907 changes by changing the brightness by 10 percent. The first figure shows a shift by +10% for each color and the second figure -10%.

Similar to the brightness gradients but the following saturation gradients show a change of the Android color 4294291907 by changing the saturation by 10% instead.

 4294291907

 4294291907

4294967295

 4292384424

 4294961659

 4290542733

 4288701044

 4286925403

 4285215300

 4283505454

 4281860889

 4280549377

 4278190080

 4294291907

 4294291907

 4294285745

 4294298325

 4294279327

 4294304487

 4294272909

 4294310905

 4294266747

 4294311935

 4294260585

 4294254167

 4294248005

 4294246465

Harmonies

Analogous

The Analogous color harmony consists of three colors that are next to each other on the color wheel.



4293244380



4294291907



4294357930

Triad

The Triadic color harmony groups three colors that are evenly spaced from another and form a triangle on the color wheel.



4294291907



4290366104



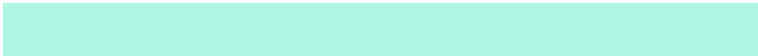
4287090159

Complementary

The Complementary color scheme is a pair of colors which are on the opposite of each other on the color wheel.



4294291907



4289852899

Split Complementary

Split-complementary colors differ from the complementary color scheme. The scheme consists of three colors, the original color and two neighbors of the complement color.



4286173661



4294291907



4288466858

Square

The Square scheme is like the rectangle color scheme, but the four colors are evenly spaced on the color wheel.



4294291907



4292199057



4286829252



4289119734

Rectangle

The Rectangle color scheme consists of four colors that form a rectangle on the color wheel.



4294291907



4293965725



4286829252



4286566122

Sweetspot

The Sweet Spot groups the original color and five complimentary colors.



4294291907



4294962160



4293112309



4286608246



4278190080



4286611584

Same Dimension

The Same Dimension uses a secret algorithm to generate beautiful new colors.



4294291907



4294945729



4294295985



4286213745



4290379825



4282056720

Inverse Universe

The Inverse Universe completely reimagines the original color for something new.



4294291907



4294945729



4289848821



4286213745



4290379825



4282056720

Previews

White Background



This preview shows how the Android color 4294291907 looks on a white background.

Color Contrast Check

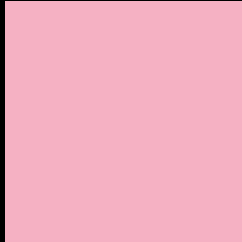
Large Text (above 18pt) WCAG AA × Fail

Any Text WCAG AA × Fail

Large Text (above 18pt) WCAG AAA × Fail

Any Text WCAG AAA × Fail

Black Background



This preview shows how the Android color 4294291907 looks on a black background.

Color Contrast Check

Large Text (above 18pt) WCAG AA ✓ Pass

Any Text WCAG AA ✓ Pass

Large Text (above 18pt) WCAG AAA ✓ Pass

Any Text WCAG AAA ✓ Pass

If you want to check with other color combinations, try the [Color Contrast Checker](#).

Android 4294291907 Background



This preview shows how black text looks on a background with the Android color 4294291907.



This preview shows how white text looks on a background with the Android color 4294291907.

Color Blindness Simulation

Color vision deficiency is a very complex topic, and I could not describe the different causes any better than Wikipedia does, so if you want to learn more, you should check out their [article about color blindness](#).

Dichromacy



Original Color
4294291907

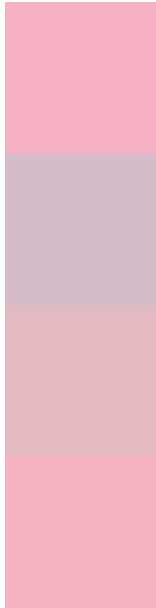
Protanopia
4291085261

Deuteranopia
4292394433



Tritanopia
4294292159

Trichromacy



Original Color
4294291907

Protanomaly
4292263113

Deuteranomaly
4293114306

Tritanomaly
4294292160

Monochromacy



Original Color
4294291907

Achromatopsia
4291282887

Achromatomaly
4292394950

CSS Examples

Text

The CSS property to change the color of the text to Android 4294291907 is called "color". The color property can be set on classes, ids or directly on the HTML element.

This example shows how text in the color `rgb(245, 177, 195)` looks like.

```
.text, #text, p{  
    color:rgb(245, 177, 195)  
}
```

If you want to add a text shadow in that color use the text-shadow property, you can generate a text shadow directly with our [CSS Text Shadow Generator](#).

Here you see how black text with a 4 pixel rgb(245, 177, 195) colored shadow looks like.

```
.shadow{ text-shadow: 4px 4px 2px rgb(245, 177, 195) }
```

Border

The CSS property to change the border of an element to Android 4294291907 is called "border". The border property can be set on classes, ids or directly on the HTML element.

This example shows the color as border, it can be applied via the CSS property "border" or "border-color".

```
.border, #border, table{ border:4px solid rgb(245, 177, 195) }
```

If only the border color should be changed use the property border-color.

```
.border{ border-color:rgb(245, 177, 195) }
```

If you want to add a box shadow in that color use:

Here you see how a box with a 4 pixel rgb(245, 177, 195) colored shadow looks like.

```
.boxshadow{ -moz-box-shadow:4px 4px 4px  
4px rgb(245, 177, 195); -webkit-box-  
shadow:4px 4px 4px 4px rgb(245, 177, 195);  
box-shadow:4px 4px 4px 4px rgb(245, 177,  
195) }
```

Background

The CSS property to change the background color of an element to Android 4294291907 is called "background". The background property can be set on classes, ids or directly on the HTML element.

```
.background, #background, body{  
background: rgb(245, 177, 195) }
```

If only the background color should be changed can be used:

```
.background{ background-color: rgb(245,  
177, 195) }
```

This example shows the color as background, it is applied via the CSS property "background".

To optimize and compress your CSS code, you can use our [online CSS compressor and optimizer](#) based on csstidy. If you want to create a linear or radial gradient as background or border, check our [CSS Gradient Generator](#).

Hey! You found this booklet interesting? Support Converting Colors with the new Membership Option!

The pro membership hides all ads, plus gives you double the colors in the color bucket, and more awesome pro features!

[Learn more, Memberships starting at \\$2.50/m!](#)

**Follow me
on Twitter!**

@ConvertingColor