

Converting Colors

Android(4294294973)

Have a look what the booklet for
Android(4294294973) contains.

Android(4294294973)	3
<i>Conversions</i>	4
<i>Details</i>	6
<i>Harmonies</i>	11
<i>Previews</i>	23
<i>Color Blindness Simulation</i>	26
<i>CSS Examples</i>	29

Color

Android(4294294973)

Conversions

Conversions Part 1

Format	Color
Hex	F5BDBD
RGB	245, 189, 189
RGB Percent	96%, 74%, 74%
CMY	0.0392, 0.2588, 0.2588
CMYK	0.00, 0.23, 0.23, 0.04
HSL	0°, 74%, 85%
HSV	0°, 23%, 96%
XYZ	65.0391, 59.4818, 56.1973
YIQ	205.7440, 33.3760, 11.8720

Conversions

Conversions Part 2

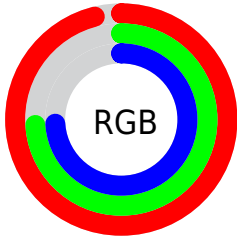
Format	Color
R _Y B	245, 189, 189
Decimal	16104893
CIE Lab	81.56, 20.11, 7.77
CIE LCh	82, 21.555, 21.132
Yxy	59.4818, 0.3599, 0.3291
Android (android.graphics.Color)	4294294973 (0xFFF5BDBD)
YUV	205.7440, -8.2548, 34.4275
Hunter-Lab	77.1244, 15.5614, 10.7850

Details

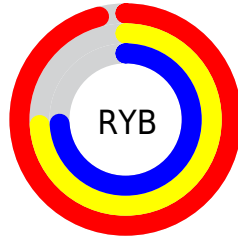
The Android color `4294294973` is a light color, and the websafe version is hex `FFCCCC`. A complement of this color would be `4290639349`, and the grayscale version is `4291743438`.

A 20% lighter version of the original color is `4294964725`, and `4290545544` is the 20% darker color. If you saturate the color by 10%, you get `4294288548`, and if you desaturate by 10%, it is `4294301398`.

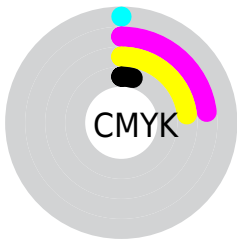
Distribution



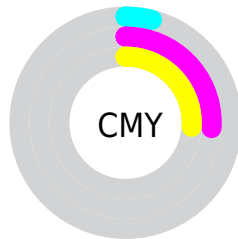
- Red (96%)
- Green (74%)
- Blue (74%)



- Red (96%)
- Yellow (74%)
- Blue (74%)



- Cyan (0%)
- Magenta (23%)
- Yellow (23%)
- Black (4%)



- Cyan (4%)
- Magenta (26%)
- Yellow (26%)

Brightness & Saturation Gradients

These gradients show how the Android color 4294294973 changes by changing the brightness by 10 percent. The first figure shows a shift by +10% for each color and the second figure -10%.

Similar to the brightness gradients but the following saturation gradients show a change of the Android color 4294294973 by changing the saturation by 10% instead.

 4294294973

 4294294973

4294967295

 4292387490

 4294964725

 4290545544

 4288704110

 4286928214

 4285218367

 4283574057

 4281930005

 4280614912

 4278190080

 4294294973

 4294294973

 4294288548

 4294301398

 4294282380

 4294307566

 4294276212

 4294311935

 4294269787

 4294263362

 4294257194

 4294250769

 4294246400

Harmonies

Analogous

The Analogous color harmony consists of three colors that are next to each other on the color wheel.



4293967314



4294294973



4293902764

Triad

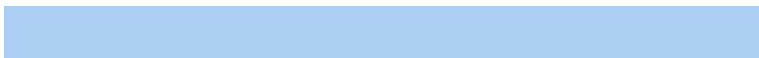
The Triadic color harmony groups three colors that are evenly spaced from another and form a triangle on the color wheel.



4294294973



4290040753



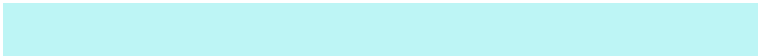
4289515250

Complementary

The Complementary color scheme is a pair of colors which are on the opposite of each other on the color wheel.



4294294973



4290639349

Split Complementary

Split-complementary colors differ from the complementary color scheme. The scheme consists of three colors, the original color and two neighbors of the complement color.



4288271593



4294294973



4288665284

Square

The Square scheme is like the rectangle color scheme, but the four colors are evenly spaced on the color wheel.



4294294973



4291546789



4287944408



4291283184

Rectangle

The Rectangle color scheme consists of four colors that form a rectangle on the color wheel.



4294294973



4293313957



4287944408



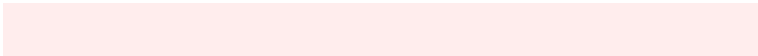
4288991472

Sweetspot

The Sweet Spot groups the original color and five complimentary colors.



4294294973



4294962669



4294295029



4286608757



4278190080



4286611584

Same Dimension

The Same Dimension uses a secret algorithm to generate beautiful new colors.



4294294973



4294949562



4294302141



4286213742



4290379776



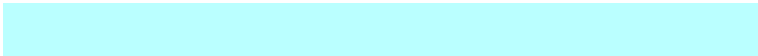
4282056704

Inverse Universe

The Inverse Universe completely reimagines the original color for something new.



4290639349



4290445311



4290632181



4285430394



4278237882



4278205243

Previews

White Background



This preview shows how the Android color 4294294973 looks on a white background.

Color Contrast Check

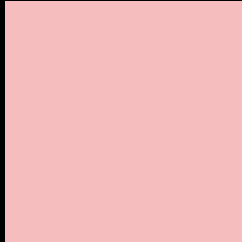
Large Text (above 18pt) WCAG AA × Fail

Any Text WCAG AA × Fail

Large Text (above 18pt) WCAG AAA × Fail

Any Text WCAG AAA × Fail

Black Background



This preview shows how the Android color 4294294973 looks on a black background.

Color Contrast Check

Large Text (above 18pt) WCAG AA ✓ Pass

Any Text WCAG AA ✓ Pass

Large Text (above 18pt) WCAG AAA ✓ Pass

Any Text WCAG AAA ✓ Pass

If you want to check with other color combinations, try the [Color Contrast Checker](#).

Android 4294294973 Background



This preview shows how black text looks on a background with the Android color 4294294973.




This preview shows how white text looks on a background with the Android color 4294294973.

Color Blindness Simulation

Color vision deficiency is a very complex topic, and I could not describe the different causes any better than Wikipedia does, so if you want to learn more, you should check out their [article about color blindness](#).

Dichromacy





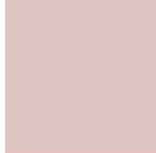
Tritanopia
4294360009

Trichromacy



Original Color

4294294973



Protanomaly

4292724161



Deuteranomaly

4293575100



Tritanomaly

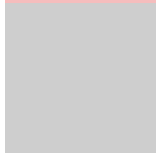
4294360261

Monochromacy



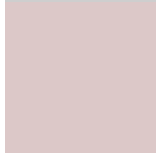
Original Color

4294294973



Achromatopsia

4291743438



Achromatomaly

4292659400

CSS Examples

Text

The CSS property to change the color of the text to Android 4294294973 is called "color". The color property can be set on classes, ids or directly on the HTML element.

This example shows how text in the color `rgb(245, 189, 189)` looks like.

```
.text, #text, p{  
    color:rgb(245, 189, 189)  
}
```

If you want to add a text shadow in that color use the text-shadow property, you can generate a text shadow directly with our [CSS Text Shadow Generator](#).

Here you see how black text with a 4 pixel rgb(245, 189, 189) colored shadow looks like.

```
.shadow{ text-shadow: 4px 4px 2px rgb(245, 189, 189) }
```

Border

The CSS property to change the border of an element to Android 4294294973 is called "border". The border property can be set on classes, ids or directly on the HTML element.

This example shows the color as border, it can be applied via the CSS property "border" or "border-color".

```
.border, #border, table{ border:4px solid rgb(245, 189, 189) }
```

If only the border color should be changed use the property `border-color`.

```
.border{ border-color:rgb(245, 189, 189) }
```

If you want to add a box shadow in that color use:

Here you see how a box with a 4 pixel `rgb(245, 189, 189)` colored shadow looks like.

```
.boxshadow{ -moz-box-shadow:4px 4px 4px  
4px rgb(245, 189, 189); -webkit-box-  
shadow:4px 4px 4px 4px rgb(245, 189, 189);  
box-shadow:4px 4px 4px 4px rgb(245, 189,  
189) }
```

Background

The CSS property to change the background color of an element to Android 4294294973 is called "background". The background property can be set on classes, ids or directly on the HTML element.

```
.background, #background, body{  
background: rgb(245, 189, 189) }
```

If only the background color should be changed can be used:

```
.background{ background-color: rgb(245,  
189, 189) }
```

This example shows the color as background, it is applied via the CSS property "background".

To optimize and compress your CSS code, you can use our [online CSS compressor and optimizer](#) based on csstidy. If you want to create a linear or radial gradient as background or border, check our [CSS Gradient Generator](#).

Hey! You found this booklet interesting? Support Converting Colors with the new Membership Option!

The pro membership hides all ads, plus gives you double the colors in the color bucket, and more awesome pro features!

[Learn more, Memberships starting at \\$2.50/m!](#)

**Follow me
on Twitter!**

@ConvertingColor