

Converting Colors

Android(4294327413)

Have a look what the booklet for
Android(4294327413) contains.

Android(4294327413)	3
<i>Conversions</i>	4
<i>Details</i>	6
<i>Harmonies</i>	11
<i>Previews</i>	23
<i>Color Blindness Simulation</i>	26
<i>CSS Examples</i>	29

Color

Android(4294327413)

Conversions

Conversions Part 1

Format	Color
Hex	F63C75
RGB	246, 60, 117
RGB Percent	96%, 24%, 46%
CMY	0.0353, 0.7647, 0.5412
CMYK	0.00, 0.76, 0.52, 0.04
HSL	342°, 91%, 60%
HSV	342°, 76%, 96%
XYZ	42.8328, 24.1089, 19.2256
YIQ	122.1120, 92.5590, 57.1590

Conversions

Conversions Part 2

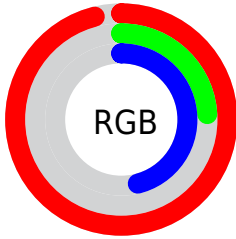
Format	Color
R_{YB}	246, 60, 117
Decimal	16137333
CIE _{Lab}	56.20, 72.15, 12.27
CIE _{LCh}	56, 73.183, 9.655
Yxy	24.1089, 0.4971, 0.2798
Android (android.graphics.Color)	4294327413 (0xFFFF63C75)
YUV	122.1120, -2.5202, 108.6498
Hunter-Lab	49.1008, 69.7869, 11.1554

Details

The Android color **4294327413** is a dark color, and the websafe version is hex **FF3366**. The color can be described as middle washed rose. A complement of this color would be **4282185405**, and the grayscale version is **4286216826**.

A 20% lighter version of the original color is **4294933417**, and **4290183237** is the 20% darker color. If you saturate the color by 10%, you get **4294320996**, and if you desaturate by 10%, it is **4294333830**.

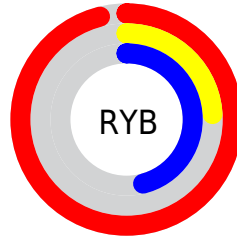
Distribution



Red (96%)

Green (24%)

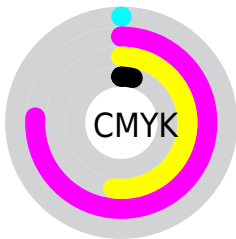
Blue (46%)



Red (96%)

Yellow (24%)

Blue (46%)

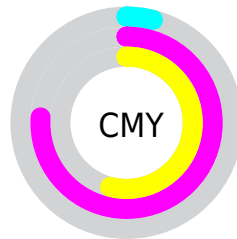


Cyan (0%)

Magenta (76%)

Yellow (52%)

Black (4%)



Cyan (4%)

Magenta (76%)

Yellow (54%)

Brightness & Saturation Gradients

These gradients show how the Android color 4294327413 changes by changing the brightness by 10 percent. The first figure shows a shift by +10% for each color and the second figure -10%.

Similar to the brightness gradients but the following saturation gradients show a change of the Android color 4294327413 by changing the saturation by 10% instead.

 4294327413

 4294327413

4294967295

 4292217949

 4294933417

 4290183237

 4294940868

 4288151599

 4294948576

 4286119963

 4294956028

 4284219394

 4294963967

 4282253315

 4279828481

 4278190080

 4294327413

 4294327413

■ 4294320996

■ 4294333830

■ 4294314835

■ 4294339991

■ 4294312011

■ 4294346408

■ 4294352569

■ 4294358986

■ 4294365403

■ 4294371564

■ 4294377469

■ 4294377471

Harmonies

Analogous

The Analogous color harmony consists of three colors that are next to each other on the color wheel.



4292954804



4294327413



4293547064

Triad

The Triadic color harmony groups three colors that are evenly spaced from another and form a triangle on the color wheel.



4294327413



4282882317



4278229759

Complementary

The Complementary color scheme is a pair of colors which are on the opposite of each other on the color wheel.



4294327413



4282185405

Split Complementary

Split-complementary colors differ from the complementary color scheme. The scheme consists of three colors, the original color and two neighbors of the complement color.



4278231511



4294327413



4278231128

Square

The Square scheme is like the rectangle color scheme, but the four colors are evenly spaced on the color wheel.



4294327413



4287662848



4278231962



4278225151

Rectangle

The Rectangle color scheme consists of four colors that form a rectangle on the color wheel.



4294327413



4292045062



4278231962



4278230517

Sweetspot

The Sweet Spot groups the original color and five complimentary colors.



4294327413



4294952150



4290460918



4286602343



4278190080



4286611584

Same Dimension

The Same Dimension uses a secret algorithm to generate beautiful new colors.



4294327413



4294907742



4294336060



4286213746



4290379833



4282056722

Inverse Universe

The Inverse Universe completely reimagines the original color for something new.



4294327413



4294907742



4282176758



4286213746



4290379833



4282056722

Previews

White Background



This preview shows how the Android color 4294327413 looks on a white background.

Color Contrast Check

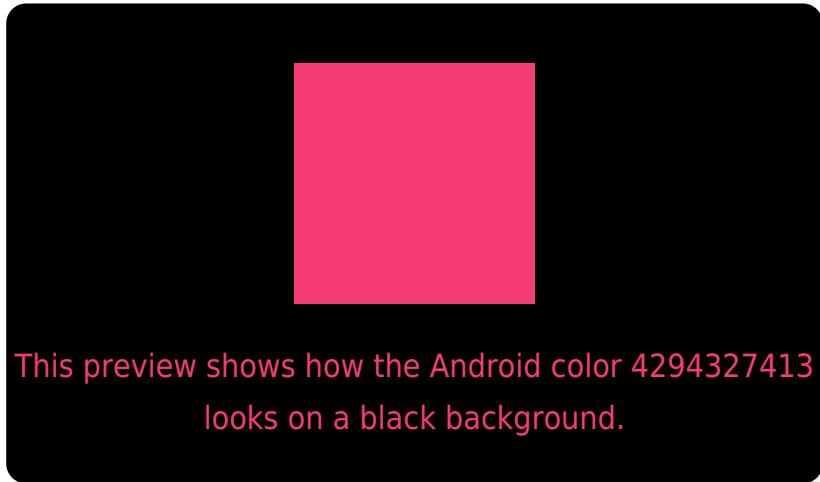
Large Text (above 18pt) WCAG AA ✓ Pass

Any Text WCAG AA ✗ Fail

Large Text (above 18pt) WCAG AAA ✗ Fail

Any Text WCAG AAA ✗ Fail

Black Background



Color Contrast Check

Large Text (above 18pt) WCAG AA ✓ Pass

Any Text WCAG AA ✓ Pass

Large Text (above 18pt) WCAG AAA ✓ Pass

Any Text WCAG AAA × Fail

If you want to check with other color combinations, try the [Color Contrast Checker](#).

Android 4294327413 Background



This preview shows how black text looks on a background with the Android color 4294327413.



This preview shows how white text looks on a background with the Android color 4294327413.

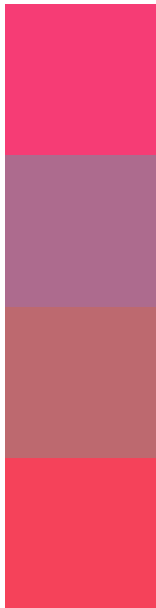
Color Blindness Simulation

Color vision deficiency is a very complex topic, and I could not describe the different causes any better than Wikipedia does, so if you want to learn more, you should check out their [article about color blindness](#).

Dichromacy



Trichromacy



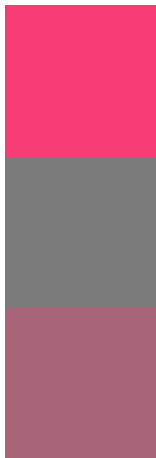
Original Color
4294327413

Protanomaly
4289555342

Deuteranomaly
4290603375

Tritanomaly
4294263386

Monochromacy



Original Color
4294327413

Achromatopsia
4286216826

Achromatomaly
4289160056

CSS Examples

Text

The CSS property to change the color of the text to Android 4294327413 is called "color". The color property can be set on classes, ids or directly on the HTML element.

This example shows how text in the color `rgb(246, 60, 117)` looks like.

```
.text, #text, p{  
    color:rgb(246, 60, 117)  
}
```

If you want to add a text shadow in that color use the text-shadow property, you can generate a text shadow directly with our [CSS Text Shadow Generator](#).

Here you see how black text with a 4 pixel rgb(246, 60, 117) colored shadow looks like.

```
.shadow{ text-shadow: 4px 4px 2px rgb(246, 60, 117) }
```

Border

The CSS property to change the border of an element to Android 4294327413 is called "border". The border property can be set on classes, ids or directly on the HTML element.

This example shows the color as border, it can be applied via the CSS property "border" or "border-color".

```
.border, #border, table{ border:4px solid rgb(246, 60, 117) }
```

If only the border color should be changed use the property `border-color`.

```
.border{ border-color:rgb(246, 60, 117) }
```

If you want to add a box shadow in that color use:

Here you see how a box with a 4 pixel `rgb(246, 60, 117)` colored shadow looks like.

```
.boxshadow{ -moz-box-shadow:4px 4px 4px 4px rgb(246, 60, 117); -webkit-box-shadow:4px 4px 4px 4px rgb(246, 60, 117); box-shadow:4px 4px 4px 4px rgb(246, 60, 117) }
```

Background

The CSS property to change the background color of an element to Android 4294327413 is called "background". The background property can be set on classes, ids or directly on the HTML element.

```
.background, #background, body{  
background: rgb(246, 60, 117) }
```

If only the background color should be changed can be used:

```
.background{ background-color: rgb(246, 60,  
117) }
```

This example shows the color as background, it is applied via the CSS property "background".

To optimize and compress your CSS code, you can use our [online CSS compressor and optimizer](#) based on csstidy. If you want to create a linear or radial gradient as background or border, check our [CSS Gradient Generator](#).

Hey! You found this booklet interesting? Support Converting Colors with the new Membership Option!

The pro membership hides all ads, plus gives you double the colors in the color bucket, and more awesome pro features!

[Learn more, Memberships starting at \\$2.50/m!](#)

**Follow me
on Twitter!**

@ConvertingColor