

Converting Colors

Android(4294329443)

Have a look what the booklet for
Android(4294329443) contains.

Android(4294329443)	3
<i>Conversions</i>	4
<i>Details</i>	6
<i>Harmonies</i>	11
<i>Previews</i>	23
<i>Color Blindness Simulation</i>	26
<i>CSS Examples</i>	29

Color

Android(4294329443)

Conversions

Conversions Part 1

Format	Color
Hex	F64463
RGB	246, 68, 99
RGB Percent	96%, 27%, 39%
CMY	0.0353, 0.7333, 0.6118
CMYK	0.00, 0.72, 0.60, 0.04
HSL	350°, 91%, 62%
HSV	350°, 72%, 96%
XYZ	42.3253, 24.6279, 14.3273
YIQ	124.7560, 96.1370, 47.3770

Conversions

Conversions Part 2

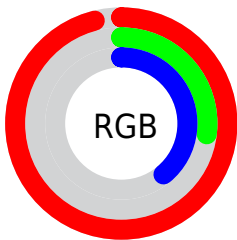
Format	Color
R_{YB}	246, 68, 99
Decimal	16139363
CIE _{Lab}	56.71, 68.41, 23.64
CIE _{LCh}	57, 72.378, 19.062
Yxy	24.6279, 0.5207, 0.3030
Android (android.graphics.Color)	4294329443 (0xFFFF64463)
YUV	124.7560, -12.6977, 106.3310
Hunter-Lab	49.6265, 65.3920, 17.6215

Details

The Android color **4294329443** is a dark color, and the websafe version is hex **FF3366**. The color can be described as middle washed rose. A complement of this color would be **4282709719**, and the grayscale version is **4286414205**.

A 20% lighter version of the original color is **4294934678**, and **4290183221** is the 20% darker color. If you saturate the color by 10%, you get **4294323023**, and if you desaturate by 10%, it is **4294335863**.

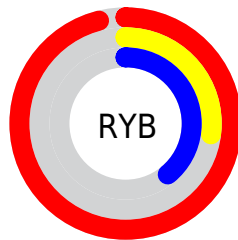
Distribution



Red (96%)

Green (27%)

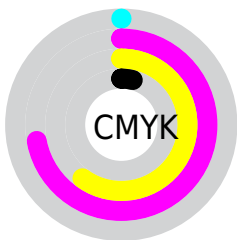
Blue (39%)



Red (96%)

Yellow (27%)

Blue (39%)

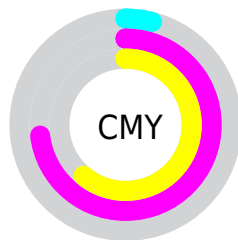


Cyan (0%)

Magenta (72%)

Yellow (60%)

Black (4%)



Cyan (4%)

Magenta (73%)

Yellow (61%)

Brightness & Saturation Gradients

These gradients show how the Android color 4294329443 changes by changing the brightness by 10 percent. The first figure shows a shift by +10% for each color and the second figure -10%.

Similar to the brightness gradients but the following saturation gradients show a change of the Android color 4294329443 by changing the saturation by 10% instead.

 4294329443

 4294329443

4294967295

 4292222795

 4294934678

 4290183221

 4294942128

 4288086048

 4294949835

 4286119946

 4294957288

 4284088321

 4294964991

 4282187779

 4279697408

 4278190080

 4294329443

 4294329443

 4294323023

 4294335863

 4294316858

 4294342028

 4294311979

 4294348448

 4294354612

 4294361033

 4294367453

 4294373617

 4294377471

Harmonies

Analogous

The Analogous color harmony consists of three colors that are next to each other on the color wheel.



4293674146



4294329443



4292960295

Triad

The Triadic color harmony groups three colors that are evenly spaced from another and form a triangle on the color wheel.



4294329443



4280458540



4278228735

Complementary

The Complementary color scheme is a pair of colors which are on the opposite of each other on the color wheel.



4294329443



4282709719

Split Complementary

Split-complementary colors differ from the complementary color scheme. The scheme consists of three colors, the original color and two neighbors of the complement color.



4278231527



4294329443



4278231918

Square

The Square scheme is like the rectangle color scheme, but the four colors are evenly spaced on the color wheel.



4294329443



4286484736



4278232240



4283138559

Rectangle

The Rectangle color scheme consists of four colors that form a rectangle on the color wheel.



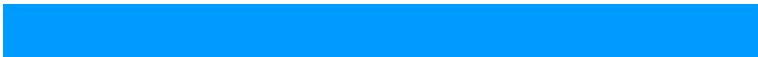
4294329443



4291261440



4278232240



4278230014

Sweetspot

The Sweet Spot groups the original color and five complimentary colors.



4294329443



4294952913



4292166902



4286602852



4278190080



4286611584

Same Dimension

The Same Dimension uses a secret algorithm to generate beautiful new colors.



4294329443



4294910280



4294343748



4286213744



4290379808



4282056714

Inverse Universe

The Inverse Universe completely reimagines the original color for something new.



4294329443



4294910280



4282695414



4286213744



4290379808



4282056714

Previews

White Background



This preview shows how the Android color 4294329443 looks on a white background.

Color Contrast Check

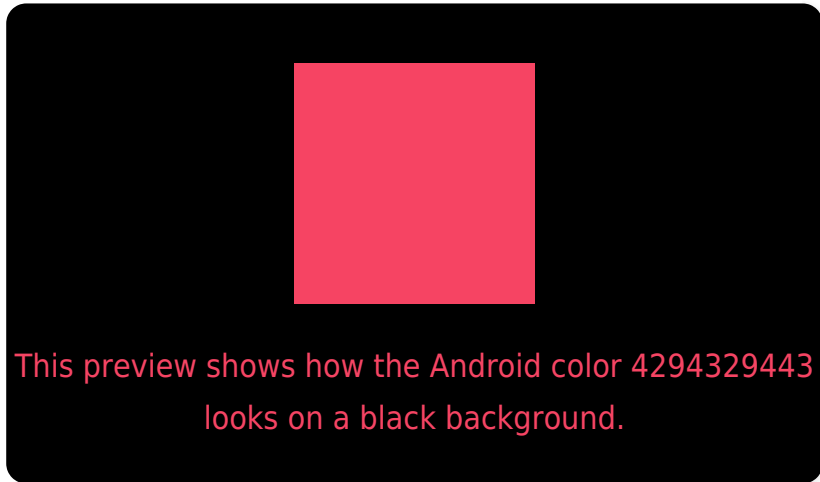
Large Text (above 18pt) WCAG AA ✓ Pass

Any Text WCAG AA ✗ Fail

Large Text (above 18pt) WCAG AAA ✗ Fail

Any Text WCAG AAA ✗ Fail

Black Background



Color Contrast Check

Large Text (above 18pt) WCAG AA ✓ Pass

Any Text WCAG AA ✓ Pass

Large Text (above 18pt) WCAG AAA ✓ Pass

Any Text WCAG AAA × Fail

If you want to check with other color combinations, try the [Color Contrast Checker](#).

Android 4294329443 Background



This preview shows how black text looks on a background with the Android color 4294329443.

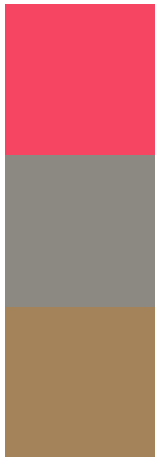


This preview shows how white text looks on a background with the Android color 4294329443.

Color Blindness Simulation

Color vision deficiency is a very complex topic, and I could not describe the different causes any better than Wikipedia does, so if you want to learn more, you should check out their [article about color blindness](#).

Dichromacy

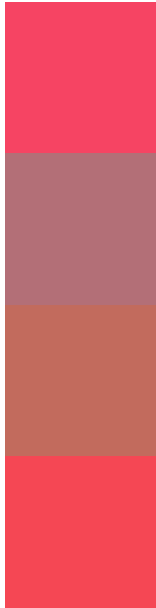


Original Color
4294329443

Protanopia
4287400066

Deuteranopia
4288971354

Trichromacy



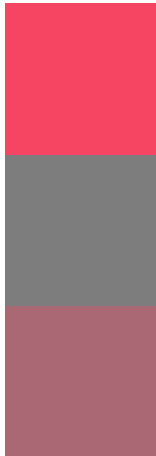
Original Color
4294329443

Protanomaly
4289949559

Deuteranomaly
4290931549

Tritanomaly
4294264660

Monochromacy



Original Color
4294329443

Achromatopsia
4286414205

Achromatomaly
4289292404

CSS Examples

Text

The CSS property to change the color of the text to Android 4294329443 is called "color". The color property can be set on classes, ids or directly on the HTML element.

This example shows how text in the color `rgb(246, 68, 99)` looks like.

```
.text, #text, p{  
    color:rgb(246, 68, 99)  
}
```

If you want to add a text shadow in that color use the text-shadow property, you can generate a text shadow directly with our [CSS Text Shadow Generator](#).

Here you see how black text with a 4 pixel rgb(246, 68, 99) colored shadow looks like.

```
.shadow{ text-shadow: 4px 4px 2px rgb(246, 68, 99) }
```

Border

The CSS property to change the border of an element to Android 4294329443 is called "border". The border property can be set on classes, ids or directly on the HTML element.

This example shows the color as border, it can be applied via the CSS property "border" or "border-color".

```
.border, #border, table{ border:4px solid rgb(246, 68, 99) }
```

If only the border color should be changed use the property border-color.

```
.border{ border-color:rgb(246, 68, 99) }
```

If you want to add a box shadow in that color use:

Here you see how a box with a 4 pixel rgb(246, 68, 99) colored shadow looks like.

```
.boxshadow{ -moz-box-shadow:4px 4px 4px  
4px rgb(246, 68, 99); -webkit-box-  
shadow:4px 4px 4px 4px rgb(246, 68, 99);  
box-shadow:4px 4px 4px 4px rgb(246, 68,  
99) }
```

Background

The CSS property to change the background color of an element to Android 4294329443 is called "background". The background property can be set on classes, ids or directly on the HTML element.

```
.background, #background, body{  
background: rgb(246, 68, 99) }
```

If only the background color should be changed can be used:

```
.background{ background-color: rgb(246, 68,  
99) }
```

This example shows the color as background, it is applied via the CSS property "background".

To optimize and compress your CSS code, you can use our [online CSS compressor and optimizer](#) based on csstidy. If you want to create a linear or radial gradient as background or border, check our [CSS Gradient Generator](#).

Hey! You found this booklet interesting? Support Converting Colors with the new Membership Option!

The pro membership hides all ads, plus gives you double the colors in the color bucket, and more awesome pro features!

[Learn more, Memberships starting at \\$2.50/m!](#)

**Follow me
on Twitter!**

@ConvertingColor