

Converting Colors

Android(4294342311)

Have a look what the booklet for
Android(4294342311) contains.

Android(4294342311)	3
<i>Conversions</i>	4
<i>Details</i>	6
<i>Harmonies</i>	11
<i>Previews</i>	23
<i>Color Blindness Simulation</i>	26
<i>CSS Examples</i>	29

Color

Android(4294342311)

Conversions

Conversions Part 1

Format	Color
Hex	F676A7
RGB	246, 118, 167
RGB Percent	96%, 46%, 65%
CMY	0.0353, 0.5373, 0.3451
CMYK	0.00, 0.52, 0.32, 0.04
HSL	337°, 88%, 71%
HSV	337°, 52%, 96%
XYZ	51.4595, 35.3397, 40.6682
YIQ	161.8580, 60.5590, 42.3750

Conversions

Conversions Part 2

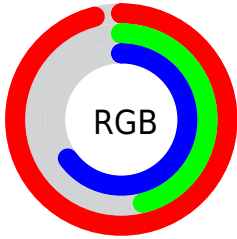
Format	Color
R _Y B	246, 118, 167
Decimal	16152231
CIE Lab	66.01, 54.02, -2.63
CIE LCh	66, 54.080, 357.210
Yxy	35.3397, 0.4037, 0.2772
Android (android.graphics.Color)	4294342311 (0xFFFF676A7)
YUV	161.8580, 2.5350, 73.7925
Hunter-Lab	59.4472, 50.4830, 1.0524

Details

The Android color **4294342311** is a light color, and the websafe version is hex **FF6699**. A complement of this color would be **4285986501**, and the grayscale version is **4288848546**.

A 20% lighter version of the original color is **4294946526**, and **4290396019** is the 20% darker color. If you saturate the color by 10%, you get **4294335896**, and if you desaturate by 10%, it is **4294348726**.

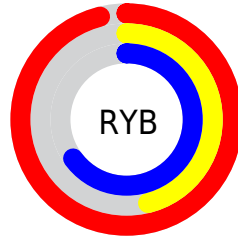
Distribution



Red (96%)

Green (46%)

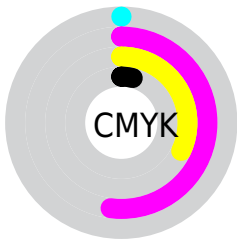
Blue (65%)



Red (96%)

Yellow (46%)

Blue (65%)

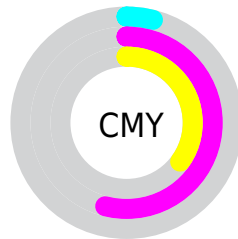


Cyan (0%)

Magenta (52%)

Yellow (32%)

Black (4%)



Cyan (4%)

Magenta (54%)

Yellow (35%)

Brightness & Saturation Gradients

These gradients show how the Android color 4294342311 changes by changing the brightness by 10 percent. The first figure shows a shift by +10% for each color and the second figure -10%.

Similar to the brightness gradients but the following saturation gradients show a change of the Android color 4294342311 by changing the saturation by 10% instead.

 4294342311

 4294342311

4294967295

 4292369293

 4294946526

 4290396019

 4294953723

 4288487771

 4294961151

 4286644291

 4284809261

 4282974233

 4281335810

 4278190080

 4294342311

 4294342311

 4294335896

 4294348726

 4294329737

 4294354885

 4294323321

 4294361301

 4294317162

 4294367460

 4294312030

 4294373875

 4294377471

Harmonies

Analogous

The Analogous color harmony consists of three colors that are next to each other on the color wheel.



4292379350



4294342311



4294539895

Triad

The Triadic color harmony groups three colors that are evenly spaced from another and form a triangle on the color wheel.



4294342311



4287671109



4278236145

Complementary

The Complementary color scheme is a pair of colors which are on the opposite of each other on the color wheel.



4294342311



4285986501

Split Complementary

Split-complementary colors differ from the complementary color scheme. The scheme consists of three colors, the original color and two neighbors of the complement color.



4278237387



4294342311



4283544682

Square

The Square scheme is like the rectangle color scheme, but the four colors are evenly spaced on the color wheel.



4294342311



4290812987



4278237338



4280330239

Rectangle

The Rectangle color scheme consists of four colors that form a rectangle on the color wheel.



4294342311



4293755995



4278237338



4278236647

Sweetspot

The Sweet Spot groups the original color and five complimentary colors.



4294342311



4294956774



4291131126



4286605169



4278190080



4286611584

Same Dimension

The Same Dimension uses a secret algorithm to generate beautiful new colors.



4294342311



4294926749



4294346102



4286213747



4290379847



4282056726

Inverse Universe

The Inverse Universe completely reimagines the original color for something new.



4294342311



4294926749



4285982710



4286213747



4290379847



4282056726

Previews

White Background



This preview shows how the Android color 4294342311 looks on a white background.

Color Contrast Check

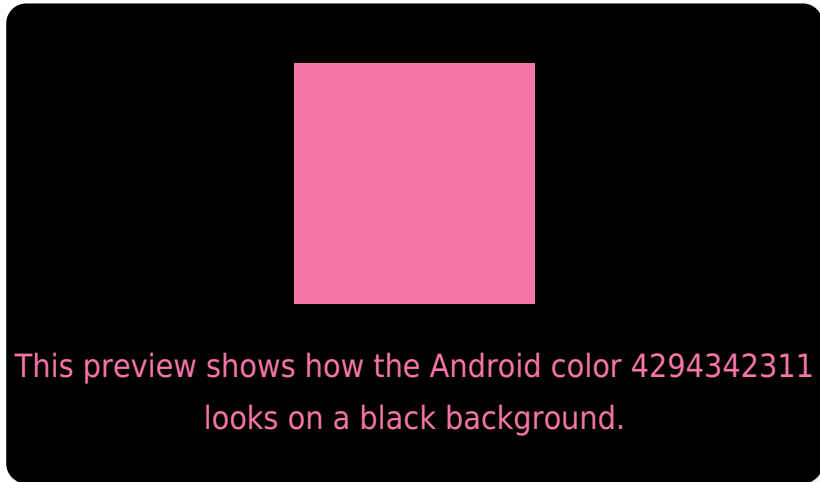
Large Text (above 18pt) WCAG AA × Fail

Any Text WCAG AA × Fail

Large Text (above 18pt) WCAG AAA × Fail

Any Text WCAG AAA × Fail

Black Background



Color Contrast Check

Large Text (above 18pt) WCAG AA ✓ Pass

Any Text WCAG AA ✓ Pass

Large Text (above 18pt) WCAG AAA ✓ Pass

Any Text WCAG AAA ✓ Pass

If you want to check with other color combinations, try the [Color Contrast Checker](#).

Android 4294342311 Background



This preview shows how black text looks on a background with the Android color 4294342311.




This preview shows how white text looks on a background with the Android color 4294342311.

Color Blindness Simulation

Color vision deficiency is a very complex topic, and I could not describe the different causes any better than Wikipedia does, so if you want to learn more, you should check out their [article about color blindness](#).

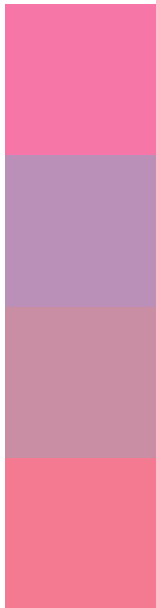
Dichromacy





Tritanopia
4294147461

Trichromacy



Original Color
4294342311

Protanomaly
4290482360

Deuteranomaly
4291399331

Tritanomaly
4294212241

Monochromacy



Original Color
4294342311

Achromatopsia
4288848546

Achromatomaly
4290876068

CSS Examples

Text

The CSS property to change the color of the text to Android 4294342311 is called "color". The color property can be set on classes, ids or directly on the HTML element.

This example shows how text in the color `rgb(246, 118, 167)` looks like.

```
.text, #text, p{  
    color:rgb(246, 118, 167)  
}
```

If you want to add a text shadow in that color use the text-shadow property, you can generate a text shadow directly with our [CSS Text Shadow Generator](#).

Here you see how black text with a 4 pixel rgb(246, 118, 167) colored shadow looks like.

```
.shadow{ text-shadow: 4px 4px 2px rgb(246, 118, 167) }
```

Border

The CSS property to change the border of an element to Android 4294342311 is called "border". The border property can be set on classes, ids or directly on the HTML element.

This example shows the color as border, it can be applied via the CSS property "border" or "border-color".

```
.border, #border, table{ border:4px solid rgb(246, 118, 167) }
```

If only the border color should be changed use the property `border-color`.

```
.border{ border-color:rgb(246, 118, 167) }
```

If you want to add a box shadow in that color use:

Here you see how a box with a 4 pixel `rgb(246, 118, 167)` colored shadow looks like.

```
.boxshadow{ -moz-box-shadow:4px 4px 4px  
4px rgb(246, 118, 167); -webkit-box-  
shadow:4px 4px 4px 4px rgb(246, 118, 167);  
box-shadow:4px 4px 4px 4px rgb(246, 118,  
167) }
```

Background

The CSS property to change the background color of an element to Android 4294342311 is called "background". The background property can be set on classes, ids or directly on the HTML element.

```
.background, #background, body{  
background: rgb(246, 118, 167) }
```

If only the background color should be changed can be used:

```
.background{ background-color: rgb(246,  
118, 167) }
```

This example shows the color as background, it is applied via the CSS property "background".

To optimize and compress your CSS code, you can use our [online CSS compressor and optimizer](#) based on csstidy. If you want to create a linear or radial gradient as background or border, check our [CSS Gradient Generator](#).

Hey! You found this booklet interesting? Support Converting Colors with the new Membership Option!

The pro membership hides all ads, plus gives you double the colors in the color bucket, and more awesome pro features!

[Learn more, Memberships starting at \\$2.50/m!](#)

**Follow me
on Twitter!**

@ConvertingColor