

Converting Colors

Android(4294360238)

Have a look what the booklet for
Android(4294360238) contains.

Android(4294360238)	3
<i>Conversions</i>	4
<i>Details</i>	6
<i>Harmonies</i>	11
<i>Previews</i>	23
<i>Color Blindness Simulation</i>	26
<i>CSS Examples</i>	29

Color

Android(4294360238)

Conversions

Conversions Part 1

Format	Color
Hex	F6BCAE
RGB	246, 188, 174
RGB Percent	96%, 74%, 68%
CMY	0.0353, 0.2627, 0.3176
CMYK	0.00, 0.24, 0.29, 0.04
HSL	12°, 80%, 82%
HSV	12°, 29%, 96%
XYZ	63.6292, 58.6153, 48.0047
YIQ	203.7460, 39.0620, 7.9420

Conversions

Conversions Part 2

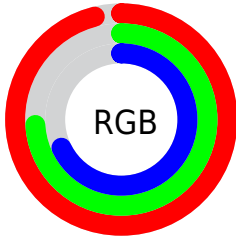
Format	Color
R _{YB}	246, 191, 174
Decimal	16170158
CIE Lab	81.08, 18.95, 15.16
CIE LCh	81, 24.268, 38.657
Yxy	58.6153, 0.3737, 0.3443
Android (android.graphics.Color)	4294360238 (0xFFF6BCAE)
YUV	203.7460, -14.6648, 37.0568
Hunter-Lab	76.5606, 14.3696, 16.4167

Details

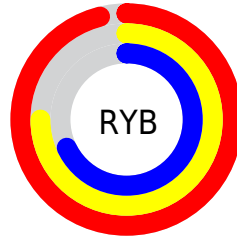
The Android color `4294360238` is a light color, and the websafe version is hex `FFCCCC`. A complement of this color would be `4289652982`, and the grayscale version is `4291611852`.

A 20% lighter version of the original color is `4294964453`, and `4290545530` is the 20% darker color. If you saturate the color by 10%, you get `4294355093`, and if you desaturate by 10%, it is `4294365383`.

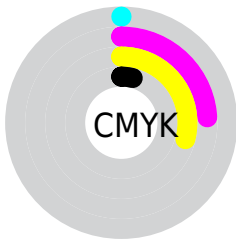
Distribution



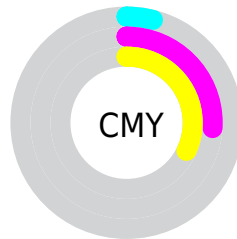
- Red (96%)
- Green (74%)
- Blue (68%)



- Red (96%)
- Yellow (75%)
- Blue (68%)



- Cyan (0%)
- Magenta (24%)
- Yellow (29%)
- Black (4%)



- Cyan (4%)
- Magenta (26%)
- Yellow (32%)

Brightness & Saturation Gradients

These gradients show how the Android color 4294360238 changes by changing the brightness by 10 percent. The first figure shows a shift by +10% for each color and the second figure -10%.

Similar to the brightness gradients but the following saturation gradients show a change of the Android color 4294360238 by changing the saturation by 10% instead.

 4294360238

 4294360238

4294967295

 4292452755

 4294964453

 4290545530

 4288769377

 4286927945

 4285218098

 4283508253

 4281929989

 4280483840

 4278190080

 4294360238

 4294360238

 4294355093

 4294365383

 4294349949

 4294370527

 4294345060

 4294375416

 4294339916

 4294377471

 4294334771

 4294329626

 4294324482

 4294324224

Harmonies

Analogous

The Analogous color harmony consists of three colors that are next to each other on the color wheel.



4294490563



4294360238



4293509792

Triad

The Triadic color harmony groups three colors that are evenly spaced from another and form a triangle on the color wheel.



4294360238



4288796088



4290300406

Complementary

The Complementary color scheme is a pair of colors which are on the opposite of each other on the color wheel.



4294360238



4289652982

Split Complementary

Split-complementary colors differ from the complementary color scheme. The scheme consists of three colors, the original color and two neighbors of the complement color.



4288401651



4294360238



4287551183

Square

The Square scheme is like the rectangle color scheme, but the four colors are evenly spaced on the color wheel.



4294360238



4290433445



4287354341



4292198893

Rectangle

The Rectangle color scheme consists of four colors that form a rectangle on the color wheel.



4294360238



4292659100



4287354341



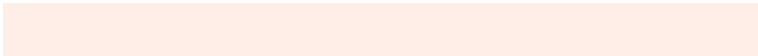
4289580278

Sweetspot

The Sweet Spot groups the original color and five complimentary colors.



4294360238



4294962664



4294356713



4286608497



4278190080



4286611584

Same Dimension

The Same Dimension uses a secret algorithm to generate beautiful new colors.



4294360238



4294948774



4294369198



4286214510



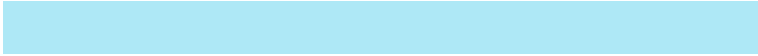
4290388992



4282059520

Inverse Universe

The Inverse Universe completely reimagines the original color for something new.



4289652982



4289130239



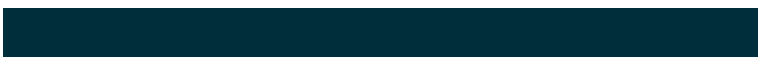
4289644022



4285429882



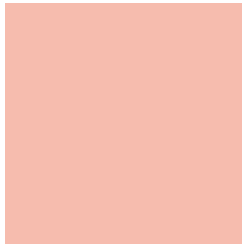
4278228666



4278202171

Previews

White Background



This preview shows how the Android color 4294360238 looks on a white background.

Color Contrast Check

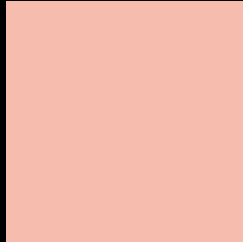
Large Text (above 18pt) WCAG AA × Fail

Any Text WCAG AA × Fail

Large Text (above 18pt) WCAG AAA × Fail

Any Text WCAG AAA × Fail

Black Background



This preview shows how the Android color 4294360238 looks on a black background.

Color Contrast Check

Large Text (above 18pt) WCAG AA ✓ Pass

Any Text WCAG AA ✓ Pass

Large Text (above 18pt) WCAG AAA ✓ Pass

Any Text WCAG AAA ✓ Pass

If you want to check with other color combinations, try the [Color Contrast Checker](#).

Android 4294360238 Background



This preview shows how black text looks on a background with the Android color 4294360238.



This preview shows how white text looks on a background with the Android color 4294360238.

Color Blindness Simulation

Color vision deficiency is a very complex topic, and I could not describe the different causes any better than Wikipedia does, so if you want to learn more, you should check out their [article about color blindness](#).


Dichromacy



Original Color
4294360238

Protanopia
4292004277

Deuteranopia
4293378733



Tritanopia
4294555847

Trichromacy



Original Color
4294360238

Protanomaly
4292854962

Deuteranomaly
4293705901

Tritanomaly
4294490558

Monochromacy



Original Color
4294360238

Achromatopsia
4291611852

Achromatomaly
4292593345

CSS Examples

Text

The CSS property to change the color of the text to Android 4294360238 is called "color". The color property can be set on classes, ids or directly on the HTML element.

This example shows how text in the color `rgb(246, 188, 174)` looks like.

```
.text, #text, p{  
    color:rgb(246, 188, 174)  
}
```

If you want to add a text shadow in that color use the text-shadow property, you can generate a text shadow directly with our [CSS Text Shadow Generator](#).

Here you see how black text with a 4 pixel rgb(246, 188, 174) colored shadow looks like.

```
.shadow{ text-shadow: 4px 4px 2px rgb(246, 188, 174) }
```

Border

The CSS property to change the border of an element to Android 4294360238 is called "border". The border property can be set on classes, ids or directly on the HTML element.

This example shows the color as border, it can be applied via the CSS property "border" or "border-color".

```
.border, #border, table{ border:4px solid rgb(246, 188, 174) }
```

If only the border color should be changed use the property `border-color`.

```
.border{ border-color:rgb(246, 188, 174) }
```

If you want to add a box shadow in that color use:

Here you see how a box with a 4 pixel `rgb(246, 188, 174)` colored shadow looks like.

```
.boxshadow{ -moz-box-shadow:4px 4px 4px  
4px rgb(246, 188, 174); -webkit-box-  
shadow:4px 4px 4px 4px rgb(246, 188, 174);  
box-shadow:4px 4px 4px 4px rgb(246, 188,  
174) }
```

Background

The CSS property to change the background color of an element to Android 4294360238 is called "background". The background property can be set on classes, ids or directly on the HTML element.

```
.background, #background, body{  
background: rgb(246, 188, 174) }
```

If only the background color should be changed can be used:

```
.background{ background-color: rgb(246,  
188, 174) }
```

This example shows the color as background, it is applied via the CSS property "background".

To optimize and compress your CSS code, you can use our [online CSS compressor and optimizer](#) based on csstidy. If you want to create a linear or radial gradient as background or border, check our [CSS Gradient Generator](#).

Hey! You found this booklet interesting? Support Converting Colors with the new Membership Option!

The pro membership hides all ads, plus gives you double the colors in the color bucket, and more awesome pro features!

[Learn more, Memberships starting at \\$2.50/m!](#)

**Follow me
on Twitter!**

@ConvertingColor