

Converting Colors

Android(4294361270)

Have a look what the booklet for
Android(4294361270) contains.

Android(4294361270)	3
<i>Conversions</i>	4
<i>Details</i>	6
<i>Harmonies</i>	11
<i>Previews</i>	23
<i>Color Blindness Simulation</i>	26
<i>CSS Examples</i>	29

Color

Android(4294361270)

Conversions

Conversions Part 1

Format	Color
Hex	F6C0B6
RGB	246, 192, 182
RGB Percent	96%, 75%, 71%
CMY	0.0353, 0.2471, 0.2863
CMYK	0.00, 0.22, 0.26, 0.04
HSL	9°, 78%, 84%
HSV	9°, 26%, 96%
XYZ	65.2992, 60.6695, 52.5247
YIQ	207.0060, 35.3940, 8.3380

Conversions

Conversions Part 2

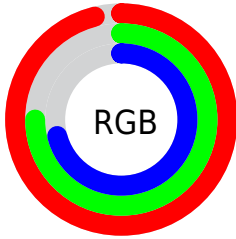
Format	Color
RYB	246, 194, 182
Decimal	16171190
CIELab	82.20, 17.91, 12.46
CIElCh	82, 21.817, 34.817
Yxy	60.6695, 0.3658, 0.3399
Android (android.graphics.Color)	4294361270 (0xFFFF6C0B6)
YUV	207.0060, -12.3280, 34.1977
Hunter-Lab	77.8906, 13.3359, 14.5419

Details

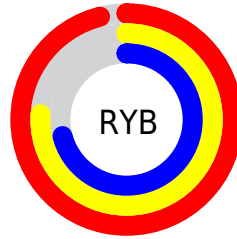
The Android color `4294361270` is a light color, and the websafe version is hex `FFCCCC`. A complement of this color would be `4290178294`, and the grayscale version is `4291809231`.

A 20% lighter version of the original color is `4294965742`, and `4290611841` is the 20% darker color. If you saturate the color by 10%, you get `4294355869`, and if you desaturate by 10%, it is `4294366671`.

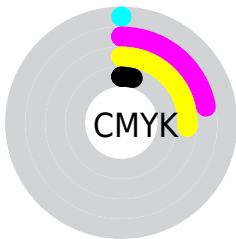
Distribution



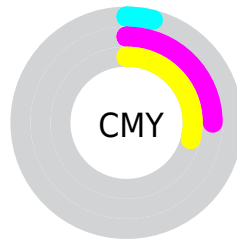
- Red (96%)
- Green (75%)
- Blue (71%)



- Red (96%)
- Yellow (76%)
- Blue (71%)



- Cyan (0%)
- Magenta (22%)
- Yellow (26%)
- Black (4%)



- Cyan (4%)
- Magenta (25%)
- Yellow (29%)

Brightness & Saturation Gradients

These gradients show how the Android color 4294361270 changes by changing the brightness by 10 percent. The first figure shows a shift by +10% for each color and the second figure -10%.

Similar to the brightness gradients but the following saturation gradients show a change of the Android color 4294361270 by changing the saturation by 10% instead.

 4294361270

 4294361270

4294967295

 4292453787

 4294965742

 4290611841

 4288770408

 4286994512

 4285284409

 4283574819

 4281996302

 4280549376

 4278190080

 4294361270

 4294361270

 4294355869

 4294366671

 4294350469

 4294372071

 4294345324

 4294377215

 4294339924

 4294377471

 4294334523

 4294329122

 4294323978

 4294321664

Harmonies

Analogous

The Analogous color harmony consists of three colors that are next to each other on the color wheel.



4294360778



4294361270



4293641640

Triad

The Triadic color harmony groups three colors that are evenly spaced from another and form a triangle on the color wheel.



4294361270



4289451962



4290366965

Complementary

The Complementary color scheme is a pair of colors which are on the opposite of each other on the color wheel.



4294361270



4290178294

Split Complementary

Split-complementary colors differ from the complementary color scheme. The scheme consists of three colors, the original color and two neighbors of the complement color.



4288795633



4294361270



4288338127

Square

The Square scheme is like the rectangle color scheme, but the four colors are evenly spaced on the color wheel.



4294361270



4290957995



4288010211



4292134638

Rectangle

The Rectangle color scheme consists of four colors that form a rectangle on the color wheel.



4294361270



4292922020



4288010211



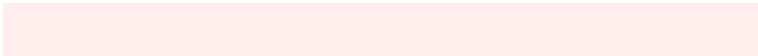
4289843189

Sweetspot

The Sweet Spot groups the original color and five complimentary colors.



4294361270



4294962923



4294358764



4286608755



4278190080



4286611584

Same Dimension

The Same Dimension uses a secret algorithm to generate beautiful new colors.



4294361270



4294950064



4294369462



4286214254



4290387200



4282059008

Inverse Universe

The Inverse Universe completely reimagines the original color for something new.



4290178294



4289786879



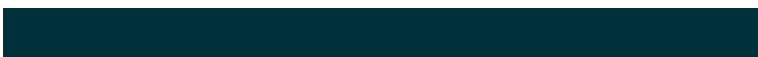
4290170102



4285429882



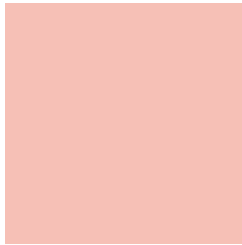
4278230458



4278202683

Previews

White Background



This preview shows how the Android color 4294361270 looks on a white background.

Color Contrast Check

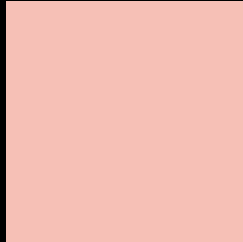
Large Text (above 18pt) WCAG AA × Fail

Any Text WCAG AA × Fail

Large Text (above 18pt) WCAG AAA × Fail

Any Text WCAG AAA × Fail

Black Background



This preview shows how the Android color 4294361270 looks on a black background.

Color Contrast Check

Large Text (above 18pt) WCAG AA ✓ Pass

Any Text WCAG AA ✓ Pass

Large Text (above 18pt) WCAG AAA ✓ Pass

Any Text WCAG AAA ✓ Pass

If you want to check with other color combinations, try the [Color Contrast Checker](#).

Android 4294361270 Background



This preview shows how black text looks on a background with the Android color 4294361270.



This preview shows how white text looks on a background with the Android color 4294361270.

Color Blindness Simulation

Color vision deficiency is a very complex topic, and I could not describe the different causes any better than Wikipedia does, so if you want to learn more, you should check out their [article about color blindness](#).


Dichromacy



Original Color
4294361270

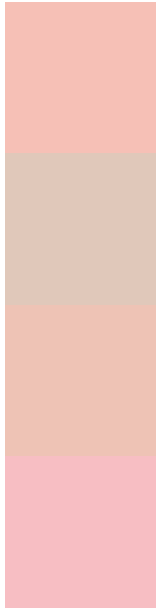
Protanopia
4292136124

Deuteranopia
4293510581



Tritanopia
4294491595

Trichromacy



Original Color
4294361270

Protanomaly
4292921530

Deuteranomaly
4293837749

Tritanomaly
4294426307

Monochromacy



Original Color
4294361270

Achromatopsia
4291809231

Achromatomaly
4292725446

CSS Examples

Text

The CSS property to change the color of the text to Android 4294361270 is called "color". The color property can be set on classes, ids or directly on the HTML element.

This example shows how text in the color `rgb(246, 192, 182)` looks like.

```
.text, #text, p{  
    color:rgb(246, 192, 182)  
}
```

If you want to add a text shadow in that color use the text-shadow property, you can generate a text shadow directly with our [CSS Text Shadow Generator](#).

Here you see how black text with a 4 pixel rgb(246, 192, 182) colored shadow looks like.

```
.shadow{ text-shadow: 4px 4px 2px rgb(246, 192, 182) }
```

Border

The CSS property to change the border of an element to Android 4294361270 is called "border". The border property can be set on classes, ids or directly on the HTML element.

This example shows the color as border, it can be applied via the CSS property "border" or "border-color".

```
.border, #border, table{ border:4px solid rgb(246, 192, 182) }
```

If only the border color should be changed use the property `border-color`.

```
.border{ border-color:rgb(246, 192, 182) }
```

If you want to add a box shadow in that color use:

Here you see how a box with a 4 pixel `rgb(246, 192, 182)` colored shadow looks like.

```
.boxshadow{ -moz-box-shadow:4px 4px 4px  
4px rgb(246, 192, 182); -webkit-box-  
shadow:4px 4px 4px 4px rgb(246, 192, 182);  
box-shadow:4px 4px 4px 4px rgb(246, 192,  
182) }
```

Background

The CSS property to change the background color of an element to Android 4294361270 is called "background". The background property can be set on classes, ids or directly on the HTML element.

```
.background, #background, body{  
background: rgb(246, 192, 182) }
```

If only the background color should be changed can be used:

```
.background{ background-color: rgb(246,  
192, 182) }
```

This example shows the color as background, it is applied via the CSS property "background".

To optimize and compress your CSS code, you can use our [online CSS compressor and optimizer](#) based on csstidy. If you want to create a linear or radial gradient as background or border, check our [CSS Gradient Generator](#).

Hey! You found this booklet interesting? Support Converting Colors with the new Membership Option!

The pro membership hides all ads, plus gives you double the colors in the color bucket, and more awesome pro features!

[Learn more, Memberships starting at \\$2.50/m!](#)

**Follow me
on Twitter!**

@ConvertingColor