

# Converting Colors

Android(4294365135)

Have a look what the booklet for  
Android(4294365135) contains.

<b>Android(4294365135)</b> .....	3
<i><b>Conversions</b></i> .....	4
<i><b>Details</b></i> .....	6
<i><b>Harmonies</b></i> .....	11
<i><b>Previews</b></i> .....	23
<i><b>Color Blindness Simulation</b></i> .....	26
<i><b>CSS Examples</b></i> .....	29

# **Color**

**Android(4294365135)**

# Conversions

## Conversions Part 1

Format	Color
Hex	F6CFCF
RGB	246, 207, 207
RGB Percent	96%, 81%, 81%
CMY	0.0353, 0.1882, 0.1882
CMYK	0.00, 0.16, 0.16, 0.04
HSL	0°, 68%, 89%
HSV	0°, 16%, 96%
XYZ	71.5813, 68.7235, 68.5237
YIQ	218.6610, 23.2440, 8.2680

# Conversions

## Conversions Part 2

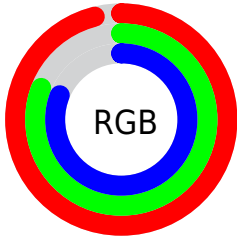
Format	Color
R <sub>Y</sub> B	246, 207, 207
Decimal	16175055
CIE Lab	86.37, 13.67, 5.10
CIE LCh	86, 14.593, 20.468
Yxy	68.7235, 0.3428, 0.3291
Android (android.graphics.Color)	4294365135 (0xFF6CF6CF)
YUV	218.6610, -5.7489, 23.9763
Hunter-Lab	82.8996, 9.0551, 9.0214

# Details

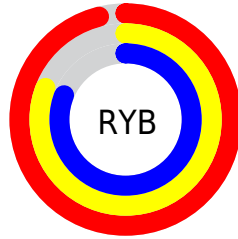
The Android color `4294365135` is a light color, and the websafe version is hex `FFCCCC`. A complement of this color would be `4291819254`, and the grayscale version is `4292598747`.

A 20% lighter version of the original color is `4294967295`, and `4290615705` is the 20% darker color. If you saturate the color by 10%, you get `4294358710`, and if you desaturate by 10%, it is `4294371560`.

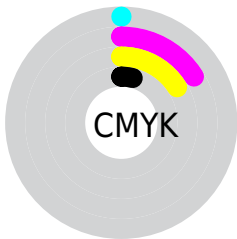
# Distribution



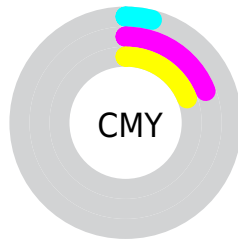
- Red (96%)
- Green (81%)
- Blue (81%)



- Red (96%)
- Yellow (81%)
- Blue (81%)



- Cyan (0%)
- Magenta (16%)
- Yellow (16%)
- Black (4%)



- Cyan (4%)
- Magenta (19%)
- Yellow (19%)

# Brightness & Saturation Gradients

These gradients show how the Android color 4294365135 changes by changing the brightness by 10 percent. The first figure shows a shift by +10% for each color and the second figure -10%.

Similar to the brightness gradients but the following saturation gradients show a change of the Android color 4294365135 by changing the saturation by 10% instead.



 4294365135

 4294365135

4294967295

 4292457395

 4290615705

 4288839551

 4287063654

 4285418830

 4283774519

 4282196258

 4280749067

 4278190080

 4294365135

 4294365135

 4294358710

 4294371560

 4294352542

 4294377471

 4294346117

 4294339949

 4294333524

 4294327099

 4294320931

 4294314506

 4294311936

# Harmonies

## Analogous

The Analogous color harmony consists of three colors that are next to each other on the color wheel.



4294103005



4294365135



4294103491

# Triad

The Triadic color harmony groups three colors that are evenly spaced from another and form a triangle on the color wheel.



4294365135



4291419846



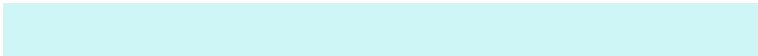
4291091443

# Complementary

The Complementary color scheme is a pair of colors which are on the opposite of each other on the color wheel.



4294365135



4291819254

# Split Complementary

Split-complementary colors differ from the complementary color scheme. The scheme consists of three colors, the original color and two neighbors of the complement color.



4290305773



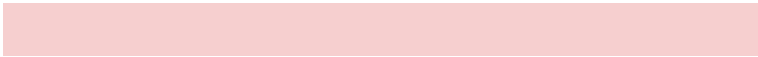
4294365135



4290568403

# Square

The Square scheme is like the rectangle color scheme, but the four colors are evenly spaced on the color wheel.



4294365135



4292467390



4290109665



4292204274

# Rectangle

The Rectangle color scheme consists of four colors that form a rectangle on the color wheel.



4294365135



4293711038



4290109665



4290764018

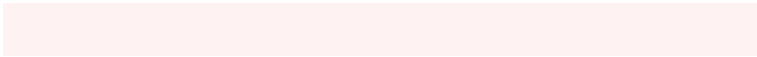


# Sweetspot

The Sweet Spot groups the original color and five complimentary colors.



4294365135



4294963954



4294365174



4286609528



4278190080



4286611584



# Same Dimension

The Same Dimension uses a secret algorithm to generate beautiful new colors.



4294365135



4294954959



4294370255



4286213742



4290379776



4282056704



# Inverse Universe

The Inverse Universe completely reimagines the original color for something new.



4291819254



4291821567



4291814390



4285430394



4278237882

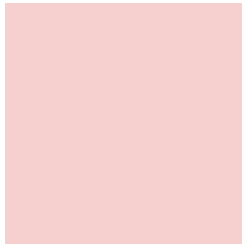


4278205243



# Previews

## White Background



This preview shows how the Android color 4294365135 looks on a white background.

## Color Contrast Check

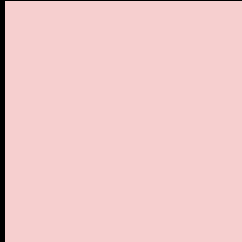
Large Text (above 18pt) WCAG AA × Fail

Any Text WCAG AA × Fail

Large Text (above 18pt) WCAG AAA × Fail

Any Text WCAG AAA × Fail

# Black Background



This preview shows how the Android color 4294365135 looks on a black background.

## Color Contrast Check

Large Text (above 18pt) WCAG AA ✓ Pass

Any Text WCAG AA ✓ Pass

Large Text (above 18pt) WCAG AAA ✓ Pass

Any Text WCAG AAA ✓ Pass

If you want to check with other color combinations, try the [Color Contrast Checker](#).



# Android 4294365135 Background



This preview shows how black text looks on a background with the Android color 4294365135.



This preview shows how white text looks on a background with the Android color 4294365135.

# Color Blindness Simulation

Color vision deficiency is a very complex topic, and I could not describe the different causes any better than Wikipedia does, so if you want to learn more, you should check out their [article about color blindness](#).


## Dichromacy



**Original Color**  
4294365135

**Protanopia**  
4292728788

**Deuteranopia**  
4294037967



**Tritanopia**  
4294495709

# Trichromacy



**Original Color**  
4294365135

**Protanomaly**  
4293317842

**Deuteranomaly**  
4294168783

**Tritanomaly**  
4294430424

# Monochromacy



**Original Color**  
4294365135

**Achromatopsia**  
4292598747

**Achromatomaly**  
4293253079

# CSS Examples

## Text

The CSS property to change the color of the text to Android 4294365135 is called "color". The color property can be set on classes, ids or directly on the HTML element.

This example shows how text in the color `rgb(246, 207, 207)` looks like.

```
.text, #text, p{  
    color:rgb(246, 207, 207)  
}
```

If you want to add a text shadow in that color use the text-shadow property, you can generate a text shadow directly with our [CSS Text Shadow Generator](#).

Here you see how black text with a 4 pixel rgb(246, 207, 207) colored shadow looks like.

```
.shadow{ text-shadow: 4px 4px 2px rgb(246, 207, 207) }
```

## Border

The CSS property to change the border of an element to Android 4294365135 is called "border". The border property can be set on classes, ids or directly on the HTML element.

This example shows the color as border, it can be applied via the CSS property "border" or "border-color".

```
.border, #border, table{ border:4px solid rgb(246, 207, 207) }
```

If only the border color should be changed use the property `border-color`.

```
.border{ border-color:rgb(246, 207, 207) }
```

If you want to add a box shadow in that color use:

Here you see how a box with a 4 pixel `rgb(246, 207, 207)` colored shadow looks like.

```
.boxshadow{ -moz-box-shadow:4px 4px 4px 4px rgb(246, 207, 207); -webkit-box-shadow:4px 4px 4px 4px rgb(246, 207, 207); box-shadow:4px 4px 4px 4px rgb(246, 207, 207) }
```

# Background

The CSS property to change the background color of an element to Android 4294365135 is called "background". The background property can be set on classes, ids or directly on the HTML element.

```
.background, #background, body{  
background: rgb(246, 207, 207) }
```

If only the background color should be changed can be used:

```
.background{ background-color: rgb(246,  
207, 207) }
```

This example shows the color as background, it is applied via the CSS property "background".

To optimize and compress your CSS code, you can use our [online CSS compressor and optimizer](#) based on csstidy. If you want to create a linear or radial gradient as background or border, check our [CSS Gradient Generator](#).



Hey! You found this booklet interesting? Support Converting Colors with the new Membership Option!

The pro membership hides all ads, plus gives you double the colors in the color bucket, and more awesome pro features!

**[Learn more, Memberships starting at \\$2.50/m!](#)**

**Follow me  
on Twitter!**

@ConvertingColor