

Converting Colors

Android(4294387041)

Have a look what the booklet for
Android(4294387041) contains.

Android(4294387041)	3
<i>Conversions</i>	4
<i>Details</i>	6
<i>Harmonies</i>	11
<i>Previews</i>	23
<i>Color Blindness Simulation</i>	26
<i>CSS Examples</i>	29

Color

Android(4294387041)

Conversions

Conversions Part 1

Format	Color
Hex	F72561
RGB	247, 37, 97
RGB Percent	97%, 15%, 38%
CMY	0.0314, 0.8549, 0.6196
CMYK	0.00, 0.85, 0.61, 0.03
HSL	343°, 93%, 56%
HSV	343°, 85%, 97%
XYZ	41.1770, 21.9604, 13.3778
YIQ	106.6300, 105.9000, 63.1800

Conversions

Conversions Part 2

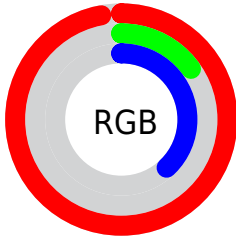
Format	Color
RYB	247, 37, 97
Decimal	16196961
CIELab	53.98, 76.67, 21.24
CIElCh	54, 79.562, 15.481
Yxy	21.9604, 0.5382, 0.2870
Android (android.graphics.Color)	4294387041 (0xFFFF72561)
YUV	106.6300, -4.7476, 123.1045
Hunter-Lab	46.8619, 74.8376, 15.8777

Details

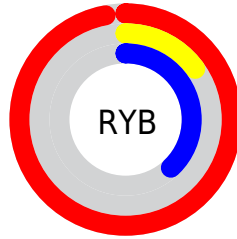
The Android color **4294387041** is a dark color, and the websafe version is hex **FF3366**. The color can be described as dark washed rose. A complement of this color would be **4280678331**, and the grayscale version is **4285229931**.

A 20% lighter version of the original color is **4294929555**, and **4290183219** is the 20% darker color. If you saturate the color by 10%, you get **4294380623**, and if you desaturate by 10%, it is **4294393459**.

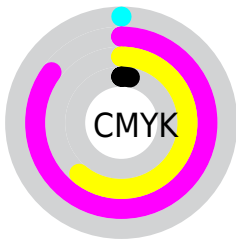
Distribution



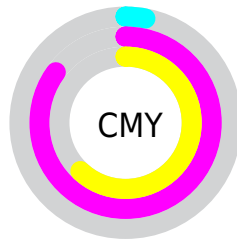
- Red (97%)
- Green (15%)
- Blue (38%)



- Red (97%)
- Yellow (15%)
- Blue (38%)



- Cyan (0%)
- Magenta (85%)
- Yellow (61%)
- Black (3%)



- Cyan (3%)
- Magenta (85%)
- Yellow (62%)

Brightness & Saturation Gradients

These gradients show how the Android color 4294387041 changes by changing the brightness by 10 percent. The first figure shows a shift by +10% for each color and the second figure -10%.

Similar to the brightness gradients but the following saturation gradients show a change of the Android color 4294387041 by changing the saturation by 10% instead.



4294387041



4294387041

4294967295



4292280394



4294929555



4290183219



4294937518



4288086047



4294945225



4286054408



4294952933



4284022787



4294960639



4281991170



4279369728



4278190080



4294387041



4294387041

 4294380623

 4294393459

 4294377543

 4294399620

 4294406038

 4294412456

 4294418873

 4294425035

 4294431453

 4294437870

 4294443007

Harmonies

Analogous

The Analogous color harmony consists of three colors that are next to each other on the color wheel.



4293471909



4294387041



4293086749

Triad

The Triadic color harmony groups three colors that are evenly spaced from another and form a triangle on the color wheel.



4294387041



4279408130



4278227967

Complementary

The Complementary color scheme is a pair of colors which are on the opposite of each other on the color wheel.



4294387041



4280678331

Split Complementary

Split-complementary colors differ from the complementary color scheme. The scheme consists of three colors, the original color and two neighbors of the complement color.



4278230243



4294387041



4278230108

Square

The Square scheme is like the rectangle color scheme, but the four colors are evenly spaced on the color wheel.



4294387041



4286351616



4278230692



4278222591

Rectangle

The Rectangle color scheme consists of four colors that form a rectangle on the color wheel.



4294387041



4291323648



4278230692



4278228991

Sweetspot

The Sweet Spot groups the original color and five complimentary colors.



4294387041



4294950352



4290258423



4286601315



4278190080



4286611584

Same Dimension

The Same Dimension uses a secret algorithm to generate beautiful new colors.



4294387041



4294901833



4294397733



4286213746



4290379829



4282056721

Inverse Universe

The Inverse Universe completely reimagines the original color for something new.



4294387041



4294901833



4280667639



4286213746



4290379829



4282056721

Previews

White Background



This preview shows how the Android color 4294387041 looks on a white background.

Color Contrast Check

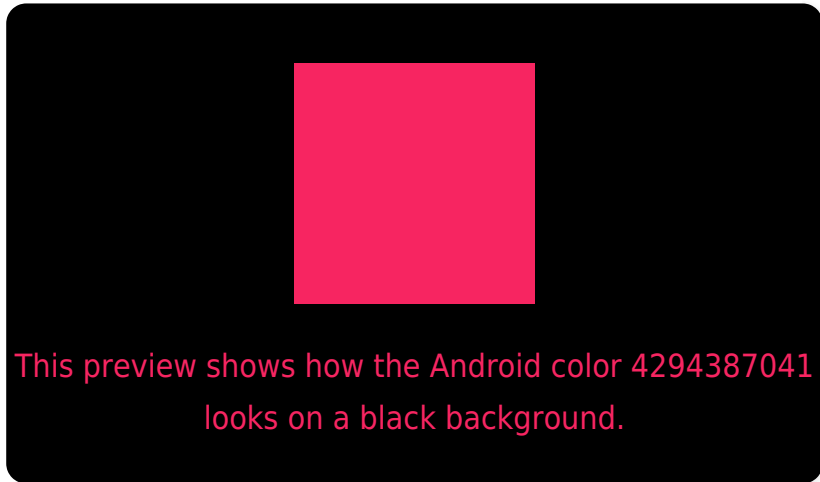
Large Text (above 18pt) WCAG AA ✓ Pass

Any Text WCAG AA ✗ Fail

Large Text (above 18pt) WCAG AAA ✗ Fail

Any Text WCAG AAA ✗ Fail

Black Background



Color Contrast Check

Large Text (above 18pt) WCAG AA ✓ Pass

Any Text WCAG AA ✓ Pass

Large Text (above 18pt) WCAG AAA ✓ Pass

Any Text WCAG AAA × Fail

If you want to check with other color combinations, try the [Color Contrast Checker](#).

Android 4294387041 Background



This preview shows how black text looks on a background with the Android color 4294387041.



This preview shows how white text looks on a background with the Android color 4294387041.

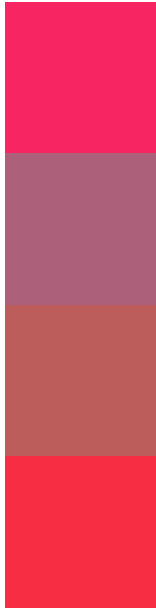
Color Blindness Simulation

Color vision deficiency is a very complex topic, and I could not describe the different causes any better than Wikipedia does, so if you want to learn more, you should check out their [article about color blindness](#).

Dichromacy



Trichromacy



Original Color
4294387041

Protanomaly
4289552506

Deuteranomaly
4290534491

Tritanomaly
4294323523

Monochromacy



Original Color
4294387041

Achromatopsia
4285229931

Achromatomaly
4288565863

CSS Examples

Text

The CSS property to change the color of the text to Android 4294387041 is called "color". The color property can be set on classes, ids or directly on the HTML element.

This example shows how text in the color `rgb(247, 37, 97)` looks like.

```
.text, #text, p{  
    color:rgb(247, 37, 97)  
}
```

If you want to add a text shadow in that color use the text-shadow property, you can generate a text shadow directly with our [CSS Text Shadow Generator](#).

Here you see how black text with a 4 pixel rgb(247, 37, 97) colored shadow looks like.

```
.shadow{ text-shadow: 4px 4px 2px rgb(247, 37, 97) }
```

Border

The CSS property to change the border of an element to Android 4294387041 is called "border". The border property can be set on classes, ids or directly on the HTML element.

This example shows the color as border, it can be applied via the CSS property "border" or "border-color".

```
.border, #border, table{ border:4px solid rgb(247, 37, 97) }
```

If only the border color should be changed use the property `border-color`.

```
.border{ border-color:rgb(247, 37, 97) }
```

If you want to add a box shadow in that color use:

Here you see how a box with a 4 pixel `rgb(247, 37, 97)` colored shadow looks like.

```
.boxshadow{ -moz-box-shadow:4px 4px 4px  
4px rgb(247, 37, 97); -webkit-box-  
shadow:4px 4px 4px 4px rgb(247, 37, 97);  
box-shadow:4px 4px 4px 4px rgb(247, 37,  
97) }
```

Background

The CSS property to change the background color of an element to Android 4294387041 is called "background". The background property can be set on classes, ids or directly on the HTML element.

```
.background, #background, body{  
background: rgb(247, 37, 97) }
```

If only the background color should be changed can be used:

```
.background{ background-color: rgb(247, 37,  
97) }
```

This example shows the color as background, it is applied via the CSS property "background".

To optimize and compress your CSS code, you can use our [online CSS compressor and optimizer](#) based on csstidy. If you want to create a linear or radial gradient as background or border, check our [CSS Gradient Generator](#).

Hey! You found this booklet interesting? Support Converting Colors with the new Membership Option!

The pro membership hides all ads, plus gives you double the colors in the color bucket, and more awesome pro features!

[Learn more, Memberships starting at \\$2.50/m!](#)

**Follow me
on Twitter!**

@ConvertingColor