

Converting Colors

Android(4294388576)

Have a look what the booklet for
Android(4294388576) contains.

Android(4294388576)	3
<i>Conversions</i>	4
<i>Details</i>	6
<i>Harmonies</i>	11
<i>Previews</i>	23
<i>Color Blindness Simulation</i>	26
<i>CSS Examples</i>	29

Color

Android(4294388576)

Conversions

Conversions Part 1

Format	Color
Hex	F72B60
RGB	247, 43, 96
RGB Percent	97%, 17%, 38%
CMY	0.0314, 0.8314, 0.6235
CMYK	0.00, 0.83, 0.61, 0.03
HSL	344°, 93%, 57%
HSV	344°, 83%, 97%
XYZ	41.3330, 22.3464, 13.2011
YIQ	110.0380, 104.5710, 59.7310

Conversions

Conversions Part 2

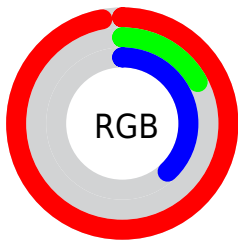
Format	Color
RYB	247, 43, 96
Decimal	16198496
CIELab	54.39, 75.39, 22.38
CIElCh	54, 78.646, 16.532
Yxy	22.3464, 0.5376, 0.2907
Android (android.graphics.Color)	4294388576 (0xFFFF72B60)
YUV	110.0380, -6.9207, 120.1157
Hunter-Lab	47.2720, 73.3480, 16.5332

Details

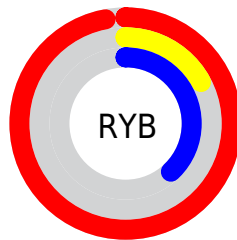
The Android color **4294388576** is a dark color, and the websafe version is hex **FF3366**. The color can be described as dark washed rose. A complement of this color would be **4281071554**, and the grayscale version is **4285427310**.

A 20% lighter version of the original color is **4294930322**, and **4290183219** is the 20% darker color. If you saturate the color by 10%, you get **4294382158**, and if you desaturate by 10%, it is **4294394994**.

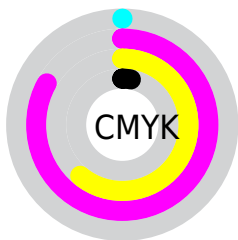
Distribution



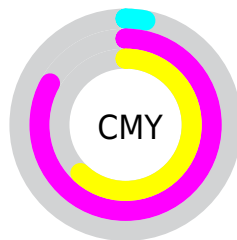
- Red (97%)
- Green (17%)
- Blue (38%)



- Red (97%)
- Yellow (17%)
- Blue (38%)



- Cyan (0%)
- Magenta (83%)
- Yellow (61%)
- Black (3%)



- Cyan (3%)
- Magenta (83%)
- Yellow (62%)

Brightness & Saturation Gradients

These gradients show how the Android color 4294388576 changes by changing the brightness by 10 percent. The first figure shows a shift by +10% for each color and the second figure -10%.

Similar to the brightness gradients but the following saturation gradients show a change of the Android color 4294388576 by changing the saturation by 10% instead.

 4294388576

 4294388576

4294967295

 4292280393

 4294930322

 4290183219

 4294938285

 4288086046

 4294945736

 4286054406

 4294953444

 4284022787

 4294961151

 4281991170

 4279435264

 4278190080

 4294388576

 4294388576

■ 4294382158

■ 4294394994

■ 4294377536

■ 4294401157

■ 4294407575

■ 4294413993

■ 4294420411

■ 4294426574

■ 4294432992

■ 4294439410

■ 4294443007

Harmonies

Analogous

The Analogous color harmony consists of three colors that are next to each other on the color wheel.



4293538212



4294388576



4293087773

Triad

The Triadic color harmony groups three colors that are evenly spaced from another and form a triangle on the color wheel.



4294388576



4279080718



4278227967

Complementary

The Complementary color scheme is a pair of colors which are on the opposite of each other on the color wheel.



4294388576



4281071554

Split Complementary

Split-complementary colors differ from the complementary color scheme. The scheme consists of three colors, the original color and two neighbors of the complement color.



4278230500



4294388576



4278230368

Square

The Square scheme is like the rectangle color scheme, but the four colors are evenly spaced on the color wheel.



4294388576



4286286592



4278230951



4278222591

Rectangle

The Rectangle color scheme consists of four colors that form a rectangle on the color wheel.



4294388576



4291258880



4278230951



4278228991

Sweetspot

The Sweet Spot groups the original color and five complimentary colors.



4294388576



4294950864



4290849783



4286601571



4278190080



4286611584

Same Dimension

The Same Dimension uses a secret algorithm to generate beautiful new colors.



4294388576



4294902596



4294400811



4286213745



4290379824



4282056719

Inverse Universe

The Inverse Universe completely reimagines the original color for something new.



4294388576



4294902596



4281059319



4286213745



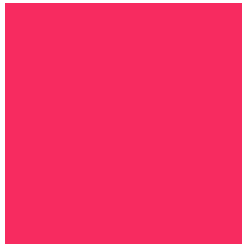
4290379824



4282056719

Previews

White Background



This preview shows how the Android color 4294388576 looks on a white background.

Color Contrast Check

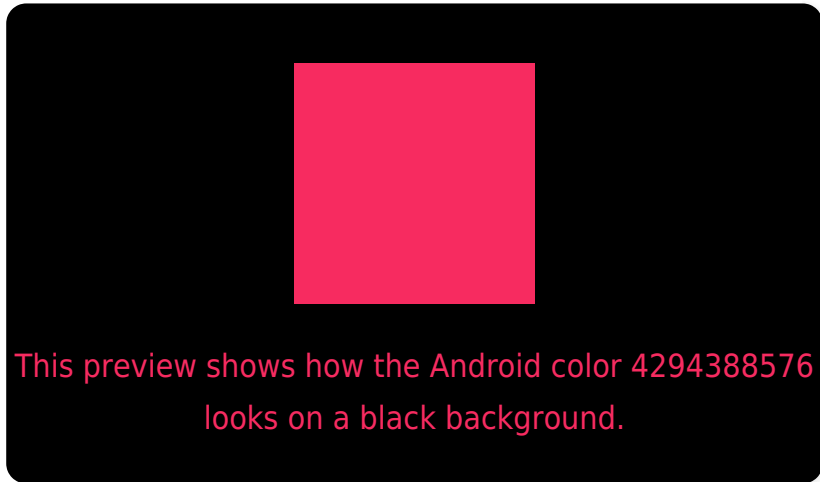
Large Text (above 18pt) WCAG AA ✓ Pass

Any Text WCAG AA ✗ Fail

Large Text (above 18pt) WCAG AAA ✗ Fail

Any Text WCAG AAA ✗ Fail

Black Background



Color Contrast Check

Large Text (above 18pt) WCAG AA ✓ Pass

Any Text WCAG AA ✓ Pass

Large Text (above 18pt) WCAG AAA ✓ Pass

Any Text WCAG AAA × Fail

If you want to check with other color combinations, try the [Color Contrast Checker](#).

Android 4294388576 Background



This preview shows how black text looks on a background with the Android color 4294388576.

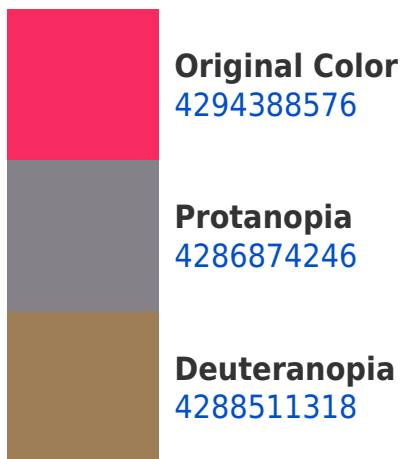


This preview shows how white text looks on a background with the Android color 4294388576.

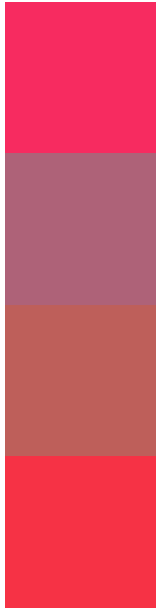
Color Blindness Simulation

Color vision deficiency is a very complex topic, and I could not describe the different causes any better than Wikipedia does, so if you want to learn more, you should check out their [article about color blindness](#).

Dichromacy



Trichromacy



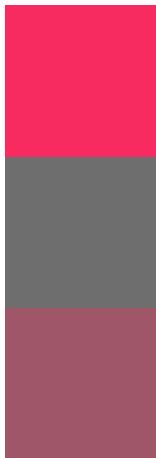
Original Color
4294388576

Protanomaly
4289618552

Deuteranomaly
4290666330

Tritanomaly
4294324805

Monochromacy



Original Color
4294388576

Achromatopsia
4285427310

Achromatomaly
4288697961

CSS Examples

Text

The CSS property to change the color of the text to Android 4294388576 is called "color". The color property can be set on classes, ids or directly on the HTML element.

This example shows how text in the color `rgb(247, 43, 96)` looks like.

```
.text, #text, p{  
    color:rgb(247, 43, 96)  
}
```

If you want to add a text shadow in that color use the text-shadow property, you can generate a text shadow directly with our [CSS Text Shadow Generator](#).

Here you see how black text with a 4 pixel rgb(247, 43, 96) colored shadow looks like.

```
.shadow{ text-shadow: 4px 4px 2px rgb(247, 43, 96) }
```

Border

The CSS property to change the border of an element to Android 4294388576 is called "border". The border property can be set on classes, ids or directly on the HTML element.

This example shows the color as border, it can be applied via the CSS property "border" or "border-color".

```
.border, #border, table{ border:4px solid rgb(247, 43, 96) }
```

If only the border color should be changed use the property `border-color`.

```
.border{ border-color:rgb(247, 43, 96) }
```

If you want to add a box shadow in that color use:

Here you see how a box with a 4 pixel `rgb(247, 43, 96)` colored shadow looks like.

```
.boxshadow{ -moz-box-shadow:4px 4px 4px  
4px rgb(247, 43, 96); -webkit-box-  
shadow:4px 4px 4px 4px rgb(247, 43, 96);  
box-shadow:4px 4px 4px 4px rgb(247, 43,  
96) }
```

Background

The CSS property to change the background color of an element to Android 4294388576 is called "background". The background property can be set on classes, ids or directly on the HTML element.

```
.background, #background, body{  
background: rgb(247, 43, 96) }
```

If only the background color should be changed can be used:

```
.background{ background-color: rgb(247, 43,  
96) }
```

This example shows the color as background, it is applied via the CSS property "background".

To optimize and compress your CSS code, you can use our [online CSS compressor and optimizer](#) based on csstidy. If you want to create a linear or radial gradient as background or border, check our [CSS Gradient Generator](#).

Hey! You found this booklet interesting? Support Converting Colors with the new Membership Option!

The pro membership hides all ads, plus gives you double the colors in the color bucket, and more awesome pro features!

[Learn more, Memberships starting at \\$2.50/m!](#)

**Follow me
on Twitter!**

@ConvertingColor