

Converting Colors

Android(4294399620)

Have a look what the booklet for
Android(4294399620) contains.

Android(4294399620)	3
<i>Conversions</i>	4
<i>Details</i>	6
<i>Harmonies</i>	11
<i>Previews</i>	23
<i>Color Blindness Simulation</i>	26
<i>CSS Examples</i>	29

Color

Android(4294399620)

Conversions

Conversions Part 1

Format	Color
Hex	F75684
RGB	247, 86, 132
RGB Percent	97%, 34%, 52%
CMY	0.0314, 0.6627, 0.4824
CMYK	0.00, 0.65, 0.47, 0.03
HSL	343°, 91%, 65%
HSV	343°, 65%, 97%
XYZ	45.8504, 28.0957, 24.8362
YIQ	139.3830, 81.1900, 48.4380

Conversions

Conversions Part 2

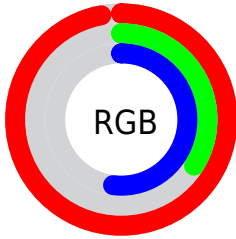
Format	Color
R _Y B	247, 86, 132
Decimal	16209540
CIE Lab	59.98, 64.66, 8.79
CIE LCh	60, 65.254, 7.743
Yxy	28.0957, 0.4642, 0.2844
Android (android.graphics.Color)	4294399620 (0xFFFF75684)
YUV	139.3830, -3.6398, 94.3801
Hunter-Lab	53.0054, 61.6458, 9.3228

Details

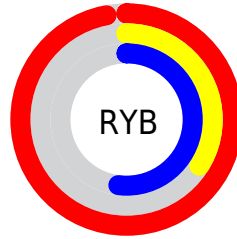
The Android color `4294399620` is a light color, and the websafe version is hex `FF6699`. The color can be described as light muted rose. A complement of this color would be `4283889609`, and the grayscale version is `4287335307`.

A 20% lighter version of the original color is `4294938809`, and `4290317395` is the 20% darker color. If you saturate the color by 10%, you get `4294393202`, and if you desaturate by 10%, it is `4294406038`.

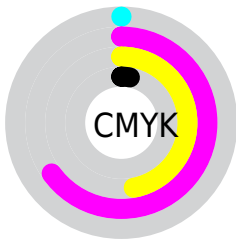
Distribution



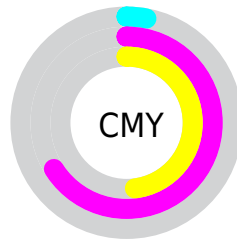
- Red (97%)
- Green (34%)
- Blue (52%)



- Red (97%)
- Yellow (34%)
- Blue (52%)



- Cyan (0%)
- Magenta (65%)
- Yellow (47%)
- Black (3%)



- Cyan (3%)
- Magenta (66%)
- Yellow (48%)

Brightness & Saturation Gradients

These gradients show how the Android color 4294399620 changes by changing the brightness by 10 percent. The first figure shows a shift by +10% for each color and the second figure -10%.

Similar to the brightness gradients but the following saturation gradients show a change of the Android color 4294399620 by changing the saturation by 10% instead.

 4294399620

 4294399620

4294967295

 4292360043

 4294938809

 4290317395

 4294946260

 4288348220

 4294953713

 4286382119

 4294961151

 4284416018

 4282646531

 4280483841

 4278190080

 4294399620

 4294399620

■ 4294393202

■ 4294406038

■ 4294387041

■ 4294412199

■ 4294380623

■ 4294418617

■ 4294377543

■ 4294425035

■ 4294431452

■ 4294437614

■ 4294443007

Harmonies

Analogous

The Analogous color harmony consists of three colors that are next to each other on the color wheel.



4292960701



4294399620



4293879117

Triad

The Triadic color harmony groups three colors that are evenly spaced from another and form a triangle on the color wheel.



4294399620



4284588332



4278231803

Complementary

The Complementary color scheme is a pair of colors which are on the opposite of each other on the color wheel.



4294399620



4283889609

Split Complementary

Split-complementary colors differ from the complementary color scheme. The scheme consists of three colors, the original color and two neighbors of the complement color.



4278233814



4294399620



4278233186

Square

The Square scheme is like the rectangle color scheme, but the four colors are evenly spaced on the color wheel.



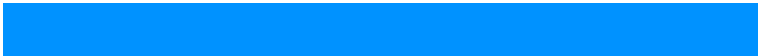
4294399620



4288647936



4278234014



4278227711

Rectangle

The Rectangle color scheme consists of four colors that form a rectangle on the color wheel.



4294399620



4292572460



4278234014



4278232817

Sweetspot

The Sweet Spot groups the original color and five complimentary colors.



4294399620



4294954203



4291254007



4286603626



4278190080



4286611584

Same Dimension

The Same Dimension uses a secret algorithm to generate beautiful new colors.



4294399620



4294916209



4294407766



4286213746



4290379829



4282056721

Inverse Universe

The Inverse Universe completely reimagines the original color for something new.



4294399620



4294916209



4283881463



4286213746



4290379829



4282056721

Previews

White Background



This preview shows how the Android color 4294399620 looks on a white background.

Color Contrast Check

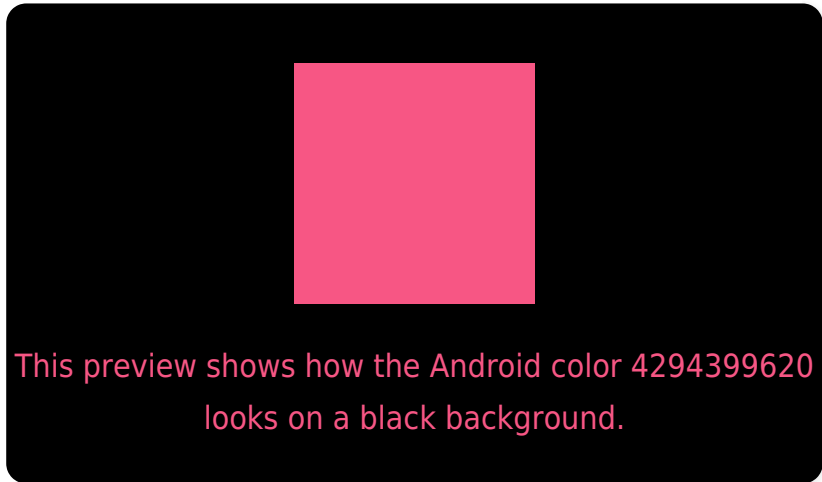
Large Text (above 18pt) WCAG AA ✓ Pass

Any Text WCAG AA ✗ Fail

Large Text (above 18pt) WCAG AAA ✗ Fail

Any Text WCAG AAA ✗ Fail

Black Background



Color Contrast Check

Large Text (above 18pt) WCAG AA ✓ Pass

Any Text WCAG AA ✓ Pass

Large Text (above 18pt) WCAG AAA ✓ Pass

Any Text WCAG AAA × Fail

If you want to check with other color combinations, try the [Color Contrast Checker](#).

Android 4294399620 Background



This preview shows how black text looks on a background with the Android color 4294399620.



This preview shows how white text looks on a background with the Android color 4294399620.

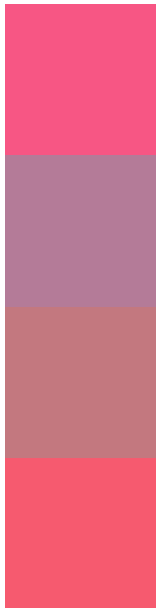
Color Blindness Simulation

Color vision deficiency is a very complex topic, and I could not describe the different causes any better than Wikipedia does, so if you want to learn more, you should check out their [article about color blindness](#).

Dichromacy



Trichromacy



Original Color
4294399620

Protanomaly
4290018200

Deuteranomaly
4291000447

Tritanomaly
4294335087

Monochromacy



Original Color
4294399620

Achromatopsia
4287335307

Achromatomaly
4289886344

CSS Examples

Text

The CSS property to change the color of the text to Android 4294399620 is called "color". The color property can be set on classes, ids or directly on the HTML element.

This example shows how text in the color `rgb(247, 86, 132)` looks like.

```
.text, #text, p{  
    color:rgb(247, 86, 132)  
}
```

If you want to add a text shadow in that color use the text-shadow property, you can generate a text shadow directly with our [CSS Text Shadow Generator](#).

Here you see how black text with a 4 pixel rgb(247, 86, 132) colored shadow looks like.

```
.shadow{ text-shadow: 4px 4px 2px rgb(247, 86, 132) }
```

Border

The CSS property to change the border of an element to Android 4294399620 is called "border". The border property can be set on classes, ids or directly on the HTML element.

This example shows the color as border, it can be applied via the CSS property "border" or "border-color".

```
.border, #border, table{ border:4px solid rgb(247, 86, 132) }
```

If only the border color should be changed use the property `border-color`.

```
.border{ border-color:rgb(247, 86, 132) }
```

If you want to add a box shadow in that color use:

Here you see how a box with a 4 pixel `rgb(247, 86, 132)` colored shadow looks like.

```
.boxshadow{ -moz-box-shadow:4px 4px 4px  
4px rgb(247, 86, 132); -webkit-box-  
shadow:4px 4px 4px 4px rgb(247, 86, 132);  
box-shadow:4px 4px 4px 4px rgb(247, 86,  
132) }
```

Background

The CSS property to change the background color of an element to Android 4294399620 is called "background". The background property can be set on classes, ids or directly on the HTML element.

```
.background, #background, body{  
background: rgb(247, 86, 132) }
```

If only the background color should be changed can be used:

```
.background{ background-color: rgb(247, 86,  
132) }
```

This example shows the color as background, it is applied via the CSS property "background".

To optimize and compress your CSS code, you can use our [online CSS compressor and optimizer](#) based on csstidy. If you want to create a linear or radial gradient as background or border, check our [CSS Gradient Generator](#).

Hey! You found this booklet interesting? Support Converting Colors with the new Membership Option!

The pro membership hides all ads, plus gives you double the colors in the color bucket, and more awesome pro features!

[Learn more, Memberships starting at \\$2.50/m!](#)

**Follow me
on Twitter!**

@ConvertingColor