

Converting Colors

Android(4294408844)

Have a look what the booklet for
Android(4294408844) contains.

Android(4294408844)	3
<i>Conversions</i>	4
<i>Details</i>	6
<i>Harmonies</i>	11
<i>Previews</i>	23
<i>Color Blindness Simulation</i>	26
<i>CSS Examples</i>	29

Color

Android(4294408844)

Conversions

Conversions Part 1

Format	Color
Hex	F77A8C
RGB	247, 122, 140
RGB Percent	97%, 48%, 55%
CMY	0.0314, 0.5216, 0.4510
CMYK	0.00, 0.51, 0.43, 0.03
HSL	351°, 89%, 72%
HSV	351°, 51%, 97%
XYZ	50.0509, 35.5867, 29.0419
YIQ	161.4270, 68.7220, 32.0980

Conversions

Conversions Part 2

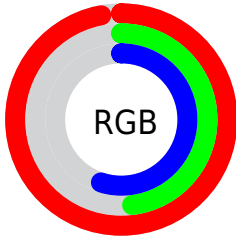
Format	Color
R _Y B	247, 122, 140
Decimal	16218764
CIE Lab	66.20, 49.44, 12.99
CIE LCh	66, 51.119, 14.718
Yxy	35.5867, 0.4364, 0.3103
Android (android.graphics.Color)	4294408844 (0xFFFF77A8C)
YUV	161.4270, -10.5635, 75.0475
Hunter-Lab	59.6546, 45.3682, 12.8938

Details

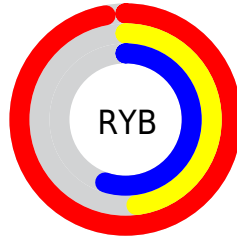
The Android color **4294408844** is a light color, and the websafe version is hex **FF9999**. A complement of this color would be **4286248933**, and the grayscale version is **4288782753**.

A 20% lighter version of the original color is **4294947265**, and **4290462810** is the 20% darker color. If you saturate the color by 10%, you get **4294402423**, and if you desaturate by 10%, it is **4294415265**.

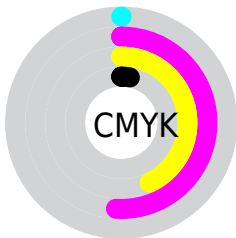
Distribution



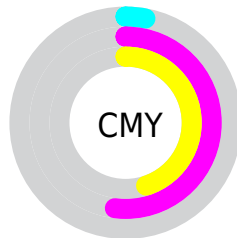
- Red (97%)
- Green (48%)
- Blue (55%)



- Red (97%)
- Yellow (48%)
- Blue (55%)



- Cyan (0%)
- Magenta (51%)
- Yellow (43%)
- Black (3%)



- Cyan (3%)
- Magenta (52%)
- Yellow (45%)

Brightness & Saturation Gradients

These gradients show how the Android color 4294408844 changes by changing the brightness by 10 percent. The first figure shows a shift by +10% for each color and the second figure -10%.

Similar to the brightness gradients but the following saturation gradients show a change of the Android color 4294408844 by changing the saturation by 10% instead.

 4294408844

 4294408844

4294967295

 4292435827

 4294947265

 4290462810

 4294954717

 4288489539

 4294962170

 4286578989

 4284743705

 4282908672

 4281139201

 4278190080

 4294408844

 4294408844

 4294402423

 4294415265

 4294396258

 4294421430

 4294389837

 4294427851

 4294383415

 4294434273

 4294377508

 4294440694

 4294443007

Harmonies

Analogous

The Analogous color harmony consists of three colors that are next to each other on the color wheel.



4293557690



4294408844



4293690722

Triad

The Triadic color harmony groups three colors that are evenly spaced from another and form a triangle on the color wheel.



4294408844



4285706333



4278234361

Complementary

The Complementary color scheme is a pair of colors which are on the opposite of each other on the color wheel.



4294408844



4286248933

Split Complementary

Split-complementary colors differ from the complementary color scheme. The scheme consists of three colors, the original color and two neighbors of the complement color.



4278236640



4294408844



4279809671

Square

The Square scheme is like the rectangle color scheme, but the four colors are evenly spaced on the color wheel.



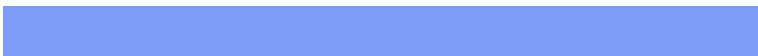
4294408844



4289111620



4278237367



4286357242

Rectangle

The Rectangle color scheme consists of four colors that form a rectangle on the color wheel.



4294408844



4292579406



4278237367



4278235379

Sweetspot

The Sweet Spot groups the original color and five complimentary colors.



4294408844



4294957534



4293163767



4286605676



4278190080



4286611584

Same Dimension

The Same Dimension uses a secret algorithm to generate beautiful new colors.



4294408844



4294927226



4294420090



4286213744



4290379803



4282056712

Inverse Universe

The Inverse Universe completely reimagines the original color for something new.



4294408844



4294927226



4286237687



4286213744



4290379803



4282056712

Previews

White Background



This preview shows how the Android color 4294408844 looks on a white background.

Color Contrast Check

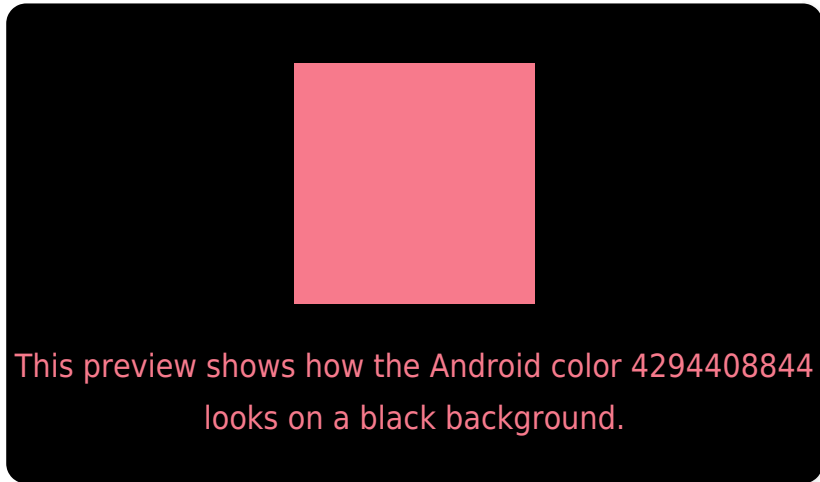
Large Text (above 18pt) WCAG AA × Fail

Any Text WCAG AA × Fail

Large Text (above 18pt) WCAG AAA × Fail

Any Text WCAG AAA × Fail

Black Background



Color Contrast Check

Large Text (above 18pt) WCAG AA ✓ Pass

Any Text WCAG AA ✓ Pass

Large Text (above 18pt) WCAG AAA ✓ Pass

Any Text WCAG AAA ✓ Pass

If you want to check with other color combinations, try the [Color Contrast Checker](#).

Android 4294408844 Background



This preview shows how black text looks on a background with the Android color 4294408844.



This preview shows how white text looks on a background with the Android color 4294408844.

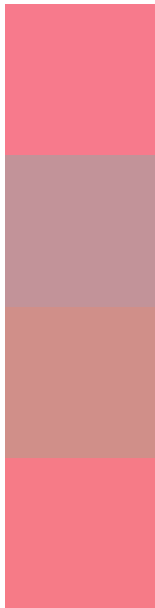
Color Blindness Simulation

Color vision deficiency is a very complex topic, and I could not describe the different causes any better than Wikipedia does, so if you want to learn more, you should check out their [article about color blindness](#).

Dichromacy



Trichromacy



Original Color
4294408844

Protanomaly
4290941849

Deuteranomaly
4291858313

Tritanomaly
4294343559

Monochromacy



Original Color
4294408844

Achromatopsia
4288782753

Achromatomaly
4290810777

CSS Examples

Text

The CSS property to change the color of the text to Android 4294408844 is called "color". The color property can be set on classes, ids or directly on the HTML element.

This example shows how text in the color `rgb(247, 122, 140)` looks like.

```
.text, #text, p{  
    color:rgb(247, 122, 140)  
}
```

If you want to add a text shadow in that color use the text-shadow property, you can generate a text shadow directly with our [CSS Text Shadow Generator](#).

Here you see how black text with a 4 pixel rgb(247, 122, 140) colored shadow looks like.

```
.shadow{ text-shadow: 4px 4px 2px rgb(247, 122, 140) }
```

Border

The CSS property to change the border of an element to Android 4294408844 is called "border". The border property can be set on classes, ids or directly on the HTML element.

This example shows the color as border, it can be applied via the CSS property "border" or "border-color".

```
.border, #border, table{ border:4px solid rgb(247, 122, 140) }
```

If only the border color should be changed use the property `border-color`.

```
.border{ border-color:rgb(247, 122, 140) }
```

If you want to add a box shadow in that color use:

Here you see how a box with a 4 pixel `rgb(247, 122, 140)` colored shadow looks like.

```
.boxshadow{ -moz-box-shadow:4px 4px 4px  
4px rgb(247, 122, 140); -webkit-box-  
shadow:4px 4px 4px 4px rgb(247, 122, 140);  
box-shadow:4px 4px 4px 4px rgb(247, 122,  
140) }
```

Background

The CSS property to change the background color of an element to Android 4294408844 is called "background". The background property can be set on classes, ids or directly on the HTML element.

```
.background, #background, body{  
background: rgb(247, 122, 140) }
```

If only the background color should be changed can be used:

```
.background{ background-color: rgb(247,  
122, 140) }
```

This example shows the color as background, it is applied via the CSS property "background".

To optimize and compress your CSS code, you can use our [online CSS compressor and optimizer](#) based on csstidy. If you want to create a linear or radial gradient as background or border, check our [CSS Gradient Generator](#).

Hey! You found this booklet interesting? Support Converting Colors with the new Membership Option!

The pro membership hides all ads, plus gives you double the colors in the color bucket, and more awesome pro features!

[Learn more, Memberships starting at \\$2.50/m!](#)

**Follow me
on Twitter!**

@ConvertingColor