

Converting Colors

Android(4294411129)

Have a look what the booklet for
Android(4294411129) contains.

Android(4294411129)	3
<i>Conversions</i>	4
<i>Details</i>	6
<i>Harmonies</i>	11
<i>Previews</i>	23
<i>Color Blindness Simulation</i>	26
<i>CSS Examples</i>	29

Color

Android(4294411129)

Conversions

Conversions Part 1

Format	Color
Hex	F78379
RGB	247, 131, 121
RGB Percent	97%, 51%, 47%
CMY	0.0314, 0.4863, 0.5255
CMYK	0.00, 0.47, 0.51, 0.03
HSL	5°, 89%, 72%
HSV	5°, 51%, 97%
XYZ	49.9253, 37.3872, 22.6743
YIQ	164.5440, 72.3460, 21.4820

Conversions

Conversions Part 2

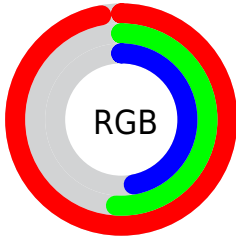
Format	Color
RYB	247, 132, 121
Decimal	16221049
CIELab	67.57, 43.23, 25.53
CIELCh	68, 50.204, 30.571
Yxy	37.3872, 0.4539, 0.3399
Android (android.graphics.Color)	4294411129 (0xFFFF78379)
YUV	164.5440, -21.4672, 72.3139
Hunter-Lab	61.1451, 38.7422, 20.8152

Details

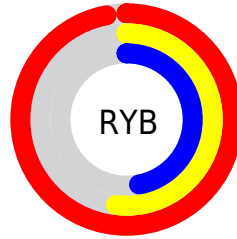
The Android color **4294411129** is a light color, and the websafe version is hex **FF9999**. A complement of this color would be **4286180855**, and the grayscale version is **4289045925**.

A 20% lighter version of the original color is **4294949549**, and **4290399816** is the 20% darker color. If you saturate the color by 10%, you get **4294405216**, and if you desaturate by 10%, it is **4294417042**.

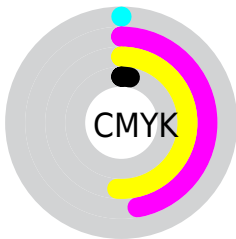
Distribution



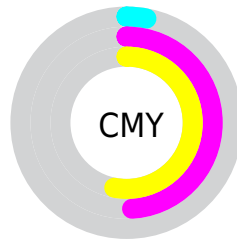
- Red (97%)
- Green (51%)
- Blue (47%)



- Red (97%)
- Yellow (52%)
- Blue (47%)



- Cyan (0%)
- Magenta (47%)
- Yellow (51%)
- Black (3%)



- Cyan (3%)
- Magenta (49%)
- Yellow (53%)

Brightness & Saturation Gradients

These gradients show how the Android color 4294411129 changes by changing the brightness by 10 percent. The first figure shows a shift by +10% for each color and the second figure -10%.

Similar to the brightness gradients but the following saturation gradients show a change of the Android color 4294411129 by changing the saturation by 10% instead.

 4294411129

 4294411129

4294967295

 4292372576

 4294949549

 4290399816

 4294956745

 4288492594

 4294964197

 4286584861

 4284678149

 4282777600

 4281139201

 4278190080

 4294411129

 4294411129

 4294405216

 4294417042

 4294399560

 4294422698

 4294393647

 4294428611

 4294387734

 4294434524

 4294382592

 4294440436

 4294443007

Harmonies

Analogous

The Analogous color harmony consists of three colors that are next to each other on the color wheel.



4294409894



4294411129



4293038678

Triad

The Triadic color harmony groups three colors that are evenly spaced from another and form a triangle on the color wheel.



4294411129



4283807862



4283607551

Complementary

The Complementary color scheme is a pair of colors which are on the opposite of each other on the color wheel.



4294411129



4286180855

Split Complementary

Split-complementary colors differ from the complementary color scheme. The scheme consists of three colors, the original color and two neighbors of the complement color.



4278236659



4294411129



4278238116

Square

The Square scheme is like the rectangle color scheme, but the four colors are evenly spaced on the color wheel.



4294411129



4287672147



4278238161



4289239283

Rectangle

The Rectangle color scheme consists of four colors that form a rectangle on the color wheel.



4294411129



4291534153



4278238161



4279611133

Sweetspot

The Sweet Spot groups the original color and five complimentary colors.



4294411129



4294958297



4294408687



4286605929



4278190080



4286611584

Same Dimension

The Same Dimension uses a secret algorithm to generate beautiful new colors.



4294411129



4294930531



4294426745



4286213998



4290383616



4282057984

Inverse Universe

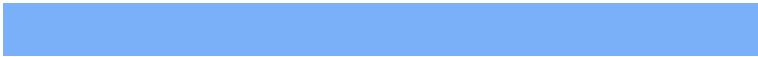
The Inverse Universe completely reimagines the original color for something new.



4286180855



4284740607



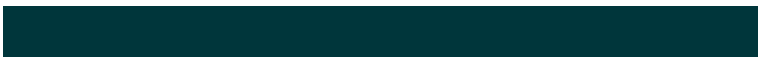
4286165239



4285430138



4278234042



4278203963

Previews

White Background



This preview shows how the Android color 429441129 looks on a white background.

Color Contrast Check

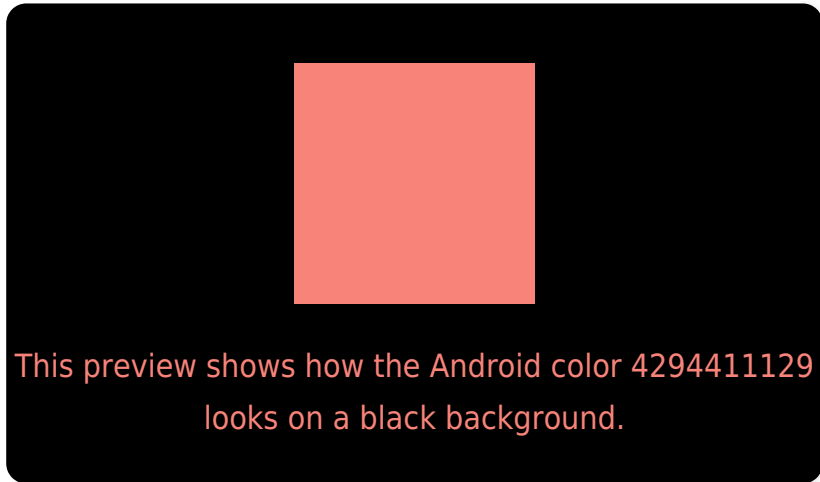
Large Text (above 18pt) WCAG AA × Fail

Any Text WCAG AA × Fail

Large Text (above 18pt) WCAG AAA × Fail

Any Text WCAG AAA × Fail

Black Background



Color Contrast Check

Large Text (above 18pt) WCAG AA ✓ Pass

Any Text WCAG AA ✓ Pass

Large Text (above 18pt) WCAG AAA ✓ Pass

Any Text WCAG AAA ✓ Pass

If you want to check with other color combinations, try the [Color Contrast Checker](#).

Android 4294411129 Background



This preview shows how black text looks on a background with the Android color 4294411129.



This preview shows how white text looks on a background with the Android color 4294411129.

Color Blindness Simulation

Color vision deficiency is a very complex topic, and I could not describe the different causes any better than Wikipedia does, so if you want to learn more, you should check out their [article about color blindness](#).

Dichromacy





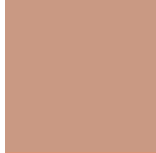
Tritanopia
4294476170

Trichromacy



Original Color

4294411129



Protanomaly

4291402115



Deuteranomaly

4292318326



Tritanomaly

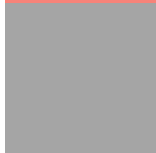
4294476420

Monochromacy



Original Color

4294411129



Achromatopsia

4289045925



Achromatomaly

4291008917

CSS Examples

Text

The CSS property to change the color of the text to Android 4294411129 is called "color". The color property can be set on classes, ids or directly on the HTML element.

This example shows how text in the color `rgb(247, 131, 121)` looks like.

```
.text, #text, p{  
    color:rgb(247, 131, 121)  
}
```

If you want to add a text shadow in that color use the text-shadow property, you can generate a text shadow directly with our [CSS Text Shadow Generator](#).

Here you see how black text with a 4 pixel rgb(247, 131, 121) colored shadow looks like.

```
.shadow{ text-shadow: 4px 4px 2px rgb(247, 131, 121) }
```

Border

The CSS property to change the border of an element to Android 4294411129 is called "border". The border property can be set on classes, ids or directly on the HTML element.

This example shows the color as border, it can be applied via the CSS property "border" or "border-color".

```
.border, #border, table{ border:4px solid rgb(247, 131, 121) }
```

If only the border color should be changed use the property `border-color`.

```
.border{ border-color:rgb(247, 131, 121) }
```

If you want to add a box shadow in that color use:

Here you see how a box with a 4 pixel `rgb(247, 131, 121)` colored shadow looks like.

```
.boxshadow{ -moz-box-shadow:4px 4px 4px  
4px rgb(247, 131, 121); -webkit-box-  
shadow:4px 4px 4px 4px rgb(247, 131, 121);  
box-shadow:4px 4px 4px 4px rgb(247, 131,  
121) }
```

Background

The CSS property to change the background color of an element to Android 4294411129 is called "background". The background property can be set on classes, ids or directly on the HTML element.

```
.background, #background, body{  
background: rgb(247, 131, 121) }
```

If only the background color should be changed can be used:

```
.background{ background-color: rgb(247,  
131, 121) }
```

This example shows the color as background, it is applied via the CSS property "background".

To optimize and compress your CSS code, you can use our [online CSS compressor and optimizer](#) based on csstidy. If you want to create a linear or radial gradient as background or border, check our [CSS Gradient Generator](#).

Hey! You found this booklet interesting? Support Converting Colors with the new Membership Option!

The pro membership hides all ads, plus gives you double the colors in the color bucket, and more awesome pro features!

[Learn more, Memberships starting at \\$2.50/m!](#)

**Follow me
on Twitter!**

@ConvertingColor