

Converting Colors

Android(4294415744)

Have a look what the booklet for
Android(4294415744) contains.

Android(4294415744)	3
<i>Conversions</i>	4
<i>Details</i>	6
<i>Harmonies</i>	11
<i>Previews</i>	23
<i>Color Blindness Simulation</i>	26
<i>CSS Examples</i>	29

Color

Android(4294415744)

Conversions

Conversions Part 1

Format	Color
Hex	F79580
RGB	247, 149, 128
RGB Percent	97%, 58%, 50%
CMY	0.0314, 0.4157, 0.4980
CMYK	0.00, 0.40, 0.48, 0.03
HSL	11°, 88%, 74%
HSV	11°, 48%, 97%
XYZ	53.0015, 42.8276, 25.8951
YIQ	175.9080, 65.1490, 14.2450

Conversions

Conversions Part 2

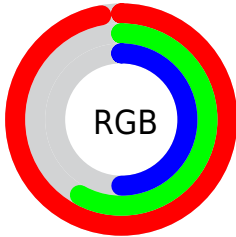
Format	Color
R _Y B	247, 154, 128
Decimal	16225664
CIE Lab	71.44, 34.66, 26.84
CIE LCh	71, 43.839, 37.755
Yxy	42.8276, 0.4354, 0.3518
Android (android.graphics.Color)	4294415744 (0xFFFF79580)
YUV	175.9080, -23.6186, 62.3477
Hunter-Lab	65.4428, 30.0407, 22.3494

Details

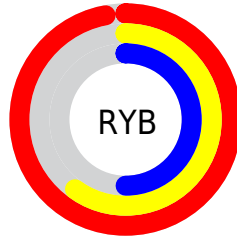
The Android color `4294415744` is a light color, and the websafe version is hex `FF9999`. A complement of this color would be `4286636791`, and the grayscale version is `4289769648`.

A 20% lighter version of the original color is `4294954165`, and `4290470223` is the 20% darker color. If you saturate the color by 10%, you get `4294410599`, and if you desaturate by 10%, it is `4294420889`.

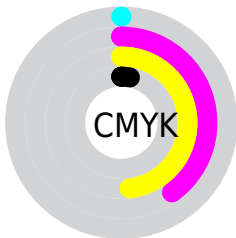
Distribution



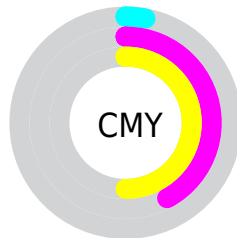
- Red (97%)
- Green (58%)
- Blue (50%)



- Red (97%)
- Yellow (60%)
- Blue (50%)



- Cyan (0%)
- Magenta (40%)
- Yellow (48%)
- Black (3%)



- Cyan (3%)
- Magenta (42%)
- Yellow (50%)

Brightness & Saturation Gradients

These gradients show how the Android color 4294415744 changes by changing the brightness by 10 percent. The first figure shows a shift by +10% for each color and the second figure -10%.

Similar to the brightness gradients but the following saturation gradients show a change of the Android color 4294415744 by changing the saturation by 10% instead.

 4294415744

 4294415744

4294967295

 4292442983

 4294954165

 4290470223

 4294961617

 4288563256

 4294967277

 4286656290

 4284814860

 4283039744

 4281401345

 4278190080

 4294415744

 4294415744

 4294410599

 4294420889

 4294405199

 4294426289

 4294400054

 4294431434

 4294394909

 4294436579

 4294389509

 4294441980

 4294388736

 4294443007

Harmonies

Analogous

The Analogous color harmony consists of three colors that are next to each other on the color wheel.



4294676390



4294415744



4292977253

Triad

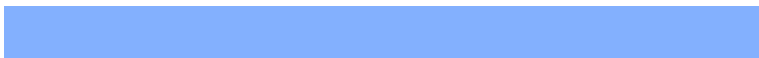
The Triadic color harmony groups three colors that are evenly spaced from another and form a triangle on the color wheel.



4294415744



4284465807



4286820606

Complementary

The Complementary color scheme is a pair of colors which are on the opposite of each other on the color wheel.



4294415744



4286636791

Split Complementary

Split-complementary colors differ from the complementary color scheme. The scheme consists of three colors, the original color and two neighbors of the complement color.



4280663032



4294415744



4278240440

Square

The Square scheme is like the rectangle color scheme, but the four colors are evenly spaced on the color wheel.



4294415744



4287871854



4278239967



4290879982

Rectangle

The Rectangle color scheme consists of four colors that form a rectangle on the color wheel.



4294415744



4291538014



4278239967



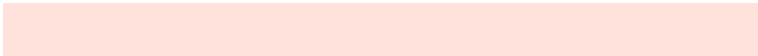
4285183230

Sweetspot

The Sweet Spot groups the original color and five complimentary colors.



4294415744



4294959835



4294410467



4286606954



4278190080



4286611584

Same Dimension

The Same Dimension uses a secret algorithm to generate beautiful new colors.



4294415744



4294935915



4294430592



4286214254



4290388224



4282059264

Inverse Universe

The Inverse Universe completely reimagines the original color for something new.



4286636791



4285261311



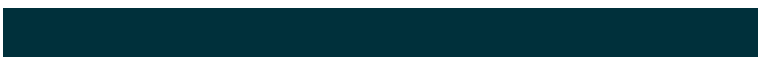
4286621943



4285429882



4278229434



4278202427

Previews

White Background



This preview shows how the Android color 4294415744 looks on a white background.

Color Contrast Check

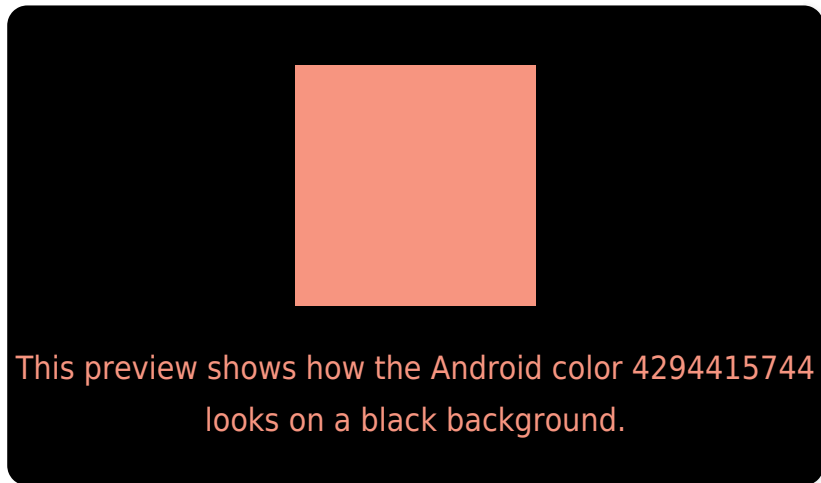
Large Text (above 18pt) WCAG AA × Fail

Any Text WCAG AA × Fail

Large Text (above 18pt) WCAG AAA × Fail

Any Text WCAG AAA × Fail

Black Background



Color Contrast Check

Large Text (above 18pt) WCAG AA ✓ Pass

Any Text WCAG AA ✓ Pass

Large Text (above 18pt) WCAG AAA ✓ Pass

Any Text WCAG AAA ✓ Pass

If you want to check with other color combinations, try the [Color Contrast Checker](#).

Android 4294415744 Background



This preview shows how black text looks on a background with the Android color 4294415744.



This preview shows how white text looks on a background with the Android color 4294415744.

Color Blindness Simulation

Color vision deficiency is a very complex topic, and I could not describe the different causes any better than Wikipedia does, so if you want to learn more, you should check out their [article about color blindness](#).

Dichromacy



Original Color
4294415744

Protanopia
4290424716

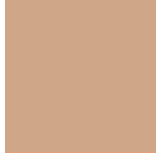
Deuteranopia
4291930236

Trichromacy



Original Color

4294415744



Protanomaly

4291864200



Deuteranomaly

4292845949



Tritanomaly

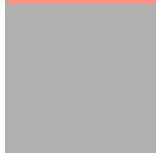
4294480530

Monochromacy



Original Color

4294415744



Achromatopsia

4289769648



Achromatomaly

4291471007

CSS Examples

Text

The CSS property to change the color of the text to Android 4294415744 is called "color". The color property can be set on classes, ids or directly on the HTML element.

This example shows how text in the color `rgb(247, 149, 128)` looks like.

```
.text, #text, p{  
    color:rgb(247, 149, 128)  
}
```

If you want to add a text shadow in that color use the text-shadow property, you can generate a text shadow directly with our [CSS Text Shadow Generator](#).

Here you see how black text with a 4 pixel rgb(247, 149, 128) colored shadow looks like.

```
.shadow{ text-shadow: 4px 4px 2px rgb(247, 149, 128) }
```

Border

The CSS property to change the border of an element to Android 4294415744 is called "border". The border property can be set on classes, ids or directly on the HTML element.

This example shows the color as border, it can be applied via the CSS property "border" or "border-color".

```
.border, #border, table{ border:4px solid rgb(247, 149, 128) }
```

If only the border color should be changed use the property `border-color`.

```
.border{ border-color:rgb(247, 149, 128) }
```

If you want to add a box shadow in that color use:

Here you see how a box with a 4 pixel `rgb(247, 149, 128)` colored shadow looks like.

```
.boxshadow{ -moz-box-shadow:4px 4px 4px  
4px rgb(247, 149, 128); -webkit-box-  
shadow:4px 4px 4px 4px rgb(247, 149, 128);  
box-shadow:4px 4px 4px 4px rgb(247, 149,  
128) }
```

Background

The CSS property to change the background color of an element to Android 4294415744 is called "background". The background property can be set on classes, ids or directly on the HTML element.

```
.background, #background, body{  
background: rgb(247, 149, 128) }
```

If only the background color should be changed can be used:

```
.background{ background-color: rgb(247,  
149, 128) }
```

This example shows the color as background, it is applied via the CSS property "background".

To optimize and compress your CSS code, you can use our [online CSS compressor and optimizer](#) based on csstidy. If you want to create a linear or radial gradient as background or border, check our [CSS Gradient Generator](#).

Hey! You found this booklet interesting? Support Converting Colors with the new Membership Option!

The pro membership hides all ads, plus gives you double the colors in the color bucket, and more awesome pro features!

[Learn more, Memberships starting at \\$2.50/m!](#)

**Follow me
on Twitter!**

@ConvertingColor