

Converting Colors

Android(4294425558)

Have a look what the booklet for
Android(4294425558) contains.

Android(4294425558)	3
<i>Conversions</i>	4
<i>Details</i>	6
<i>Harmonies</i>	11
<i>Previews</i>	23
<i>Color Blindness Simulation</i>	26
<i>CSS Examples</i>	29

Color

Android(4294425558)

Conversions

Conversions Part 1

Format	Color
Hex	F7BBD6
RGB	247, 187, 214
RGB Percent	97%, 73%, 84%
CMY	0.0314, 0.2667, 0.1608
CMYK	0.00, 0.24, 0.13, 0.03
HSL	333°, 79%, 85%
HSV	333°, 24%, 97%
XYZ	68.2657, 60.1698, 71.6343
YIQ	208.0180, 27.0930, 21.1170

Conversions

Conversions Part 2

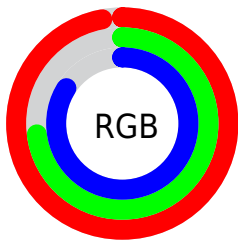
Format	Color
R _Y B	247, 187, 214
Decimal	16235478
CIE Lab	81.93, 25.66, -5.10
CIE LCh	82, 26.161, 348.755
Yxy	60.1698, 0.3412, 0.3007
Android (android.graphics.Color)	4294425558 (0xFFF7BBD6)
YUV	208.0180, 2.9491, 34.1872
Hunter-Lab	77.5692, 21.3449, -0.4552

Details

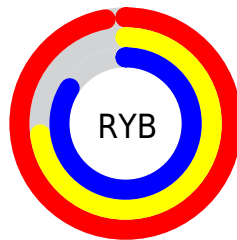
The Android color `4294425558` is a light color, and the websafe version is hex `FFCCFF`. A complement of this color would be `4290508764`, and the grayscale version is `4291875024`.

A 20% lighter version of the original color is `4294964223`, and `4290676127` is the 20% darker color. If you saturate the color by 10%, you get `4294419144`, and if you desaturate by 10%, it is `4294431972`.

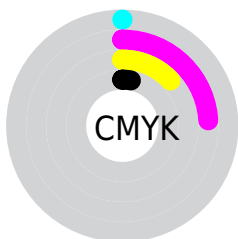
Distribution



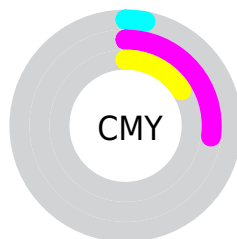
- Red (97%)
- Green (73%)
- Blue (84%)



- Red (97%)
- Yellow (73%)
- Blue (84%)



- Cyan (0%)
- Magenta (24%)
- Yellow (13%)
- Black (3%)



- Cyan (3%)
- Magenta (27%)
- Yellow (16%)

Brightness & Saturation Gradients

These gradients show how the Android color 4294425558 changes by changing the brightness by 10 percent. The first figure shows a shift by +10% for each color and the second figure -10%.

Similar to the brightness gradients but the following saturation gradients show a change of the Android color 4294425558 by changing the saturation by 10% instead.

 4294425558

 4294425558

4294967295

 4292518074

 4294964223

 4290676127

 4288834693

 4287124332

 4285414228

 4283704381

 4282125607

 4280746002

 4278190080

■ 4294425558

■ 4294425558

■ 4294419144

■ 4294431972

■ 4294412987

■ 4294438129

■ 4294406573

■ 4294443007

■ 4294400160

■ 4294393746

■ 4294387588

■ 4294381175

■ 4294377583

Harmonies

Analogous

The Analogous color harmony consists of three colors that are next to each other on the color wheel.



4293050604



4294425558



4294884285

Triad

The Triadic color harmony groups three colors that are evenly spaced from another and form a triangle on the color wheel.



4294425558



4291743645



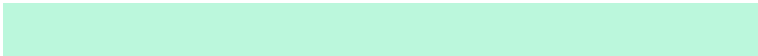
4287289328

Complementary

The Complementary color scheme is a pair of colors which are on the opposite of each other on the color wheel.



4294425558



4290508764

Split Complementary

Split-complementary colors differ from the complementary color scheme. The scheme consists of three colors, the original color and two neighbors of the complement color.



4287093467



4294425558



4289910187

Square

The Square scheme is like the rectangle color scheme, but the four colors are evenly spaced on the color wheel.



4294425558



4293379996



4288207297



4288860667

Rectangle

The Rectangle color scheme consists of four colors that form a rectangle on the color wheel.



4294425558



4294753710



4288207297



4287092970

Sweetspot

The Sweet Spot groups the original color and five complimentary colors.



4294425558



4294962677



4292656119



4286608762



4278190080



4286611584

Same Dimension

The Same Dimension uses a secret algorithm to generate beautiful new colors.



4294425558



4294948310



4294426299



4286213748



4290379860



4282056730

Inverse Universe

The Inverse Universe completely reimagines the original color for something new.



4294425558



4294948310



4290508023



4286213748



4290379860



4282056730

Previews

White Background



This preview shows how the Android color 4294425558 looks on a white background.

Color Contrast Check

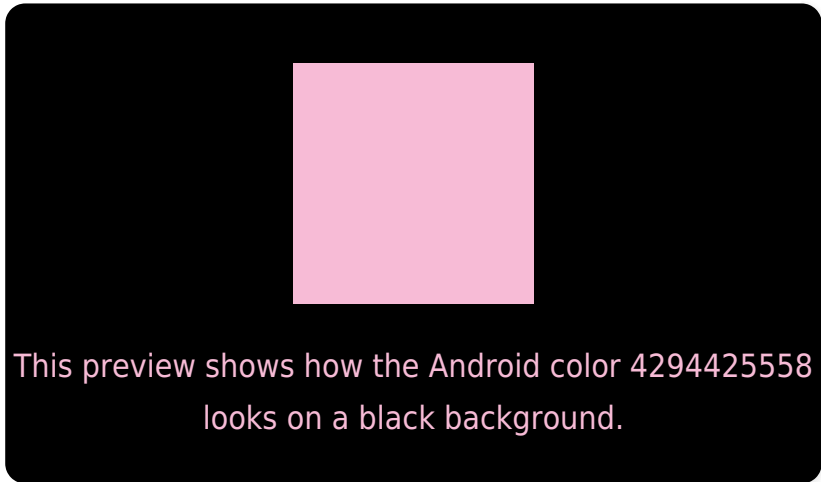
Large Text (above 18pt) WCAG AA × Fail

Any Text WCAG AA × Fail

Large Text (above 18pt) WCAG AAA × Fail

Any Text WCAG AAA × Fail

Black Background



Color Contrast Check

Large Text (above 18pt) WCAG AA ✓ Pass

Any Text WCAG AA ✓ Pass

Large Text (above 18pt) WCAG AAA ✓ Pass

Any Text WCAG AAA ✓ Pass

If you want to check with other color combinations, try the [Color Contrast Checker](#).

Android 4294425558 Background



This preview shows how black text looks on a background with the Android color 4294425558.




This preview shows how white text looks on a background with the Android color 4294425558.

Color Blindness Simulation

Color vision deficiency is a very complex topic, and I could not describe the different causes any better than Wikipedia does, so if you want to learn more, you should check out their [article about color blindness](#).

Dichromacy





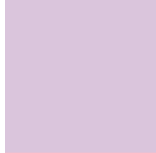
Tritanopia
4294360523

Trichromacy



Original Color

4294425558



Protanomaly

4292527580



Deuteranomaly

4293313237



Tritanomaly

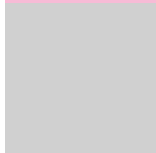
4294360271

Monochromacy



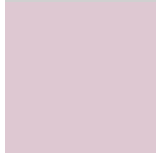
Original Color

4294425558



Achromatopsia

4291875024



Achromatomaly

4292790482

CSS Examples

Text

The CSS property to change the color of the text to Android 4294425558 is called "color". The color property can be set on classes, ids or directly on the HTML element.

This example shows how text in the color `rgb(247, 187, 214)` looks like.

```
.text, #text, p{  
    color:rgb(247, 187, 214)  
}
```

If you want to add a text shadow in that color use the text-shadow property, you can generate a text shadow directly with our [CSS Text Shadow Generator](#).

Here you see how black text with a 4 pixel rgb(247, 187, 214) colored shadow looks like.

```
.shadow{ text-shadow: 4px 4px 2px rgb(247, 187, 214) }
```

Border

The CSS property to change the border of an element to Android 4294425558 is called "border". The border property can be set on classes, ids or directly on the HTML element.

This example shows the color as border, it can be applied via the CSS property "border" or "border-color".

```
.border, #border, table{ border:4px solid rgb(247, 187, 214) }
```

If only the border color should be changed use the property border-color.

```
.border{ border-color:rgb(247, 187, 214) }
```

If you want to add a box shadow in that color use:

Here you see how a box with a 4 pixel rgb(247, 187, 214) colored shadow looks like.

```
.boxshadow{ -moz-box-shadow:4px 4px 4px  
4px rgb(247, 187, 214); -webkit-box-  
shadow:4px 4px 4px 4px rgb(247, 187, 214);  
box-shadow:4px 4px 4px 4px rgb(247, 187,  
214) }
```

Background

The CSS property to change the background color of an element to Android 4294425558 is called "background". The background property can be set on classes, ids or directly on the HTML element.

```
.background, #background, body{  
background: rgb(247, 187, 214) }
```

If only the background color should be changed can be used:

```
.background{ background-color: rgb(247,  
187, 214) }
```

This example shows the color as background, it is applied via the CSS property "background".

To optimize and compress your CSS code, you can use our [online CSS compressor and optimizer](#) based on csstidy. If you want to create a linear or radial gradient as background or border, check our [CSS Gradient Generator](#).

Hey! You found this booklet interesting? Support Converting Colors with the new Membership Option!

The pro membership hides all ads, plus gives you double the colors in the color bucket, and more awesome pro features!

[Learn more, Memberships starting at \\$2.50/m!](#)

**Follow me
on Twitter!**

@ConvertingColor