

Converting Colors

Android(4294476441)

Have a look what the booklet for
Android(4294476441) contains.

Android(4294476441)	3
<i>Conversions</i>	4
<i>Details</i>	6
<i>Harmonies</i>	11
<i>Previews</i>	23
<i>Color Blindness Simulation</i>	26
<i>CSS Examples</i>	29

Color

Android(4294476441)

Conversions

Conversions Part 1

Format	Color
Hex	F88299
RGB	248, 130, 153
RGB Percent	97%, 51%, 60%
CMY	0.0275, 0.4902, 0.4000
CMYK	0.00, 0.48, 0.38, 0.03
HSL	348°, 89%, 74%
HSV	348°, 48%, 97%
XYZ	52.4438, 38.2216, 34.7504
YIQ	167.9040, 62.9450, 32.1690

Conversions

Conversions Part 2

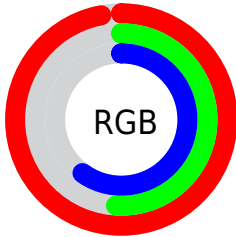
Format	Color
R_YB	248, 130, 153
Decimal	16286361
CIE Lab	68.18, 47.24, 8.47
CIE LCh	68, 47.991, 10.162
Yxy	38.2216, 0.4182, 0.3048
Android (android.graphics.Color)	4294476441 (0xFFFF88299)
YUV	167.9040, -7.3477, 70.2442
Hunter-Lab	61.8236, 43.2267, 9.9503

Details

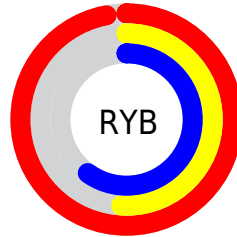
The Android color `4294476441` is a light color, and the websafe version is hex `FF9999`. A complement of this color would be `4286773473`, and the grayscale version is `4289243304`.

A 20% lighter version of the original color is `4294949327`, and `4290530662` is the 20% darker color. If you saturate the color by 10%, you get `4294470021`, and if you desaturate by 10%, it is `4294482861`.

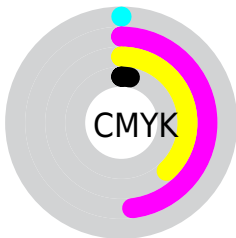
Distribution



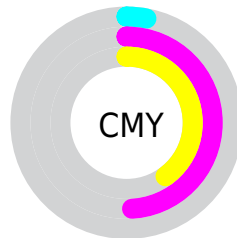
- Red (97%)
- Green (51%)
- Blue (60%)



- Red (97%)
- Yellow (51%)
- Blue (60%)



- Cyan (0%)
- Magenta (48%)
- Yellow (38%)
- Black (3%)



- Cyan (3%)
- Magenta (49%)
- Yellow (40%)

Brightness & Saturation Gradients

These gradients show how the Android color 4294476441 changes by changing the brightness by 10 percent. The first figure shows a shift by +10% for each color and the second figure -10%.

Similar to the brightness gradients but the following saturation gradients show a change of the Android color 4294476441 by changing the saturation by 10% instead.

 4294476441

 4294476441

4294967295

 4292503423

 4294949327

 4290530662

 4294956779

 4288623182

 4294964223

 4286714680

 4284874786

 4283105292

 4281466882

 4278190080

 4294476441

 4294476441

 4294470021

 4294482861

 4294463601

 4294489281

 4294457437

 4294495445

 4294451017

 4294501865

 4294444597

 4294508285

 4294443056

 4294508543

Harmonies

Analogous

The Analogous color harmony consists of three colors that are next to each other on the color wheel.



4293363653



4294476441



4294019696

Triad

The Triadic color harmony groups three colors that are evenly spaced from another and form a triangle on the color wheel.



4294476441



4286821474



4278236151

Complementary

The Complementary color scheme is a pair of colors which are on the opposite of each other on the color wheel.



4294476441



4286773473

Split Complementary

Split-complementary colors differ from the complementary color scheme. The scheme consists of three colors, the original color and two neighbors of the complement color.



4278237917



4294476441



4282694279

Square

The Square scheme is like the rectangle color scheme, but the four colors are evenly spaced on the color wheel.



4294476441



4289898830



4278238388



4286162683

Rectangle

The Rectangle color scheme consists of four colors that form a rectangle on the color wheel.



4294476441



4293039196



4278238388



4278236913

Sweetspot

The Sweet Spot groups the original color and five complimentary colors.



4294476441



4294958050



4292903672



4286605934



4278190080



4286611584

Same Dimension

The Same Dimension uses a secret algorithm to generate beautiful new colors.



4294476441



4294930058



4294485378



4286410867



4290576421



4282187788

Inverse Universe

The Inverse Universe completely reimagines the original color for something new.



4294476441



4294930058



4286764536



4286410867



4290576421



4282187788

Previews

White Background



This preview shows how the Android color 4294476441 looks on a white background.

Color Contrast Check

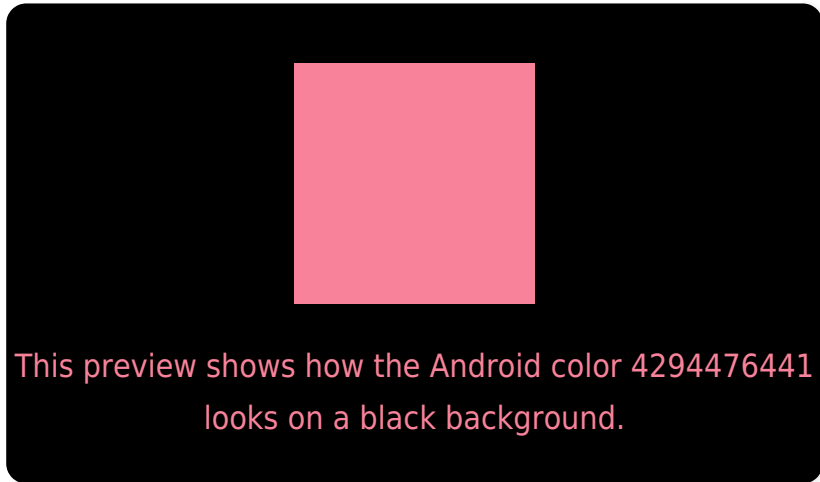
Large Text (above 18pt) WCAG AA × Fail

Any Text WCAG AA × Fail

Large Text (above 18pt) WCAG AAA × Fail

Any Text WCAG AAA × Fail

Black Background



Color Contrast Check

Large Text (above 18pt) WCAG AA ✓ Pass

Any Text WCAG AA ✓ Pass

Large Text (above 18pt) WCAG AAA ✓ Pass

Any Text WCAG AAA ✓ Pass

If you want to check with other color combinations, try the [Color Contrast Checker](#).

Android 4294476441 Background



This preview shows how black text looks on a background with the Android color 4294476441.



This preview shows how white text looks on a background with the Android color 4294476441.

Color Blindness Simulation

Color vision deficiency is a very complex topic, and I could not describe the different causes any better than Wikipedia does, so if you want to learn more, you should check out their [article about color blindness](#).

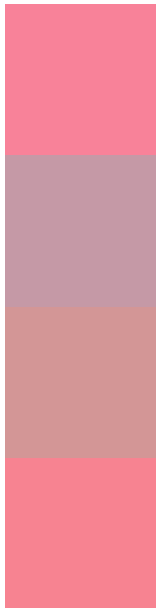
Dichromacy





Tritanopia
4294411405

Trichromacy



Original Color
4294476441

Protanomaly
4291140006

Deuteranomaly
4292056726

Tritanomaly
4294411153

Monochromacy



Original Color
4294476441

Achromatopsia
4289243304

Achromatomaly
4291140259

CSS Examples

Text

The CSS property to change the color of the text to Android 4294476441 is called "color". The color property can be set on classes, ids or directly on the HTML element.

This example shows how text in the color `rgb(248, 130, 153)` looks like.

```
.text, #text, p{  
    color:rgb(248, 130, 153)  
}
```

If you want to add a text shadow in that color use the text-shadow property, you can generate a text shadow directly with our [CSS Text Shadow Generator](#).

Here you see how black text with a 4 pixel rgb(248, 130, 153) colored shadow looks like.

```
.shadow{ text-shadow: 4px 4px 2px rgb(248, 130, 153) }
```

Border

The CSS property to change the border of an element to Android 4294476441 is called "border". The border property can be set on classes, ids or directly on the HTML element.

This example shows the color as border, it can be applied via the CSS property "border" or "border-color".

```
.border, #border, table{ border:4px solid rgb(248, 130, 153) }
```

If only the border color should be changed use the property `border-color`.

```
.border{ border-color:rgb(248, 130, 153) }
```

If you want to add a box shadow in that color use:

Here you see how a box with a 4 pixel `rgb(248, 130, 153)` colored shadow looks like.

```
.boxshadow{ -moz-box-shadow:4px 4px 4px  
4px rgb(248, 130, 153); -webkit-box-  
shadow:4px 4px 4px 4px rgb(248, 130, 153);  
box-shadow:4px 4px 4px 4px rgb(248, 130,  
153) }
```

Background

The CSS property to change the background color of an element to Android 4294476441 is called "background". The background property can be set on classes, ids or directly on the HTML element.

```
.background, #background, body{  
background: rgb(248, 130, 153) }
```

If only the background color should be changed can be used:

```
.background{ background-color: rgb(248,  
130, 153) }
```

This example shows the color as background, it is applied via the CSS property "background".

To optimize and compress your CSS code, you can use our [online CSS compressor and optimizer](#) based on csstidy. If you want to create a linear or radial gradient as background or border, check our [CSS Gradient Generator](#).

Hey! You found this booklet interesting? Support Converting Colors with the new Membership Option!

The pro membership hides all ads, plus gives you double the colors in the color bucket, and more awesome pro features!

[Learn more, Memberships starting at \\$2.50/m!](#)

**Follow me
on Twitter!**

@ConvertingColor