

Converting Colors

Android(4294479477)

Have a look what the booklet for
Android(4294479477) contains.

Android(4294479477)	3
<i>Conversions</i>	4
<i>Details</i>	6
<i>Harmonies</i>	11
<i>Previews</i>	23
<i>Color Blindness Simulation</i>	26
<i>CSS Examples</i>	29

Color

Android(4294479477)

Conversions

Conversions Part 1

Format	Color
Hex	F88E75
RGB	248, 142, 117
RGB Percent	97%, 56%, 46%
CMY	0.0275, 0.4431, 0.5412
CMYK	0.00, 0.43, 0.53, 0.03
HSL	11°, 90%, 72%
HSV	11°, 53%, 97%
XYZ	51.5953, 40.5868, 21.9443
YIQ	170.8440, 71.2010, 14.6970

Conversions

Conversions Part 2

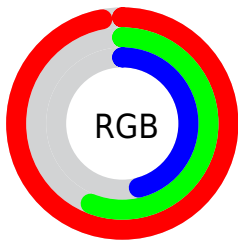
Format	Color
R _Y B	248, 148, 117
Decimal	16289397
CIE Lab	69.89, 37.68, 30.82
CIE LCh	70, 48.677, 39.280
Yxy	40.5868, 0.4521, 0.3556
Android (android.graphics.Color)	4294479477 (0xFFFF88E75)
YUV	170.8440, -26.5451, 67.6658
Hunter-Lab	63.7078, 33.0739, 24.1729

Details

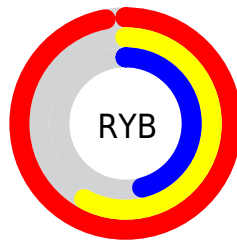
The Android color **4294479477** is a light color, and the websafe version is hex **FF9966**. A complement of this color would be **4285915128**, and the grayscale version is **4289440683**.

A 20% lighter version of the original color is **4294952361**, and **4290533956** is the 20% darker color. If you saturate the color by 10%, you get **4294474332**, and if you desaturate by 10%, it is **4294484622**.

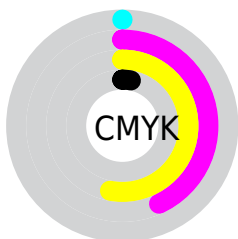
Distribution



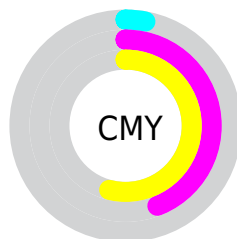
- Red (97%)
- Green (56%)
- Blue (46%)



- Red (97%)
- Yellow (58%)
- Blue (46%)



- Cyan (0%)
- Magenta (43%)
- Yellow (53%)
- Black (3%)



- Cyan (3%)
- Magenta (44%)
- Yellow (54%)

Brightness & Saturation Gradients

These gradients show how the Android color 4294479477 changes by changing the brightness by 10 percent. The first figure shows a shift by +10% for each color and the second figure -10%.

Similar to the brightness gradients but the following saturation gradients show a change of the Android color 4294479477 by changing the saturation by 10% instead.



4294479477



4294479477

4294967295



4292506716



4294952361



4290533956



4294959557



4288561454



4294967009



4286654232

4294967293



4284746496



4282908672



4281335810



4278190080



4294479477



4294479477

4294474332

4294484622

4294469187

4294489767

4294464043

4294494911

4294458898

4294500056

4294455040

4294505201

4294508543

Harmonies

Analogous

The Analogous color harmony consists of three colors that are next to each other on the color wheel.



4294870687



4294479477



4292844888

Triad

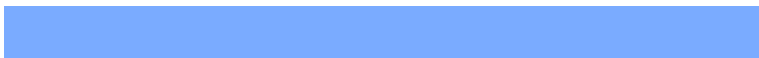
The Triadic color harmony groups three colors that are evenly spaced from another and form a triangle on the color wheel.



4294479477



4283023242



4286229503

Complementary

The Complementary color scheme is a pair of colors which are on the opposite of each other on the color wheel.



4294479477



4285915128

Split Complementary

Split-complementary colors differ from the complementary color scheme. The scheme consists of three colors, the original color and two neighbors of the complement color.



4278237437



4294479477



4278239928

Square

The Square scheme is like the rectangle color scheme, but the four colors are evenly spaced on the color wheel.



4294479477



4287150180



4278239201



4290812655

Rectangle

The Rectangle color scheme consists of four colors that form a rectangle on the color wheel.



4294479477



4291209296



4278239201



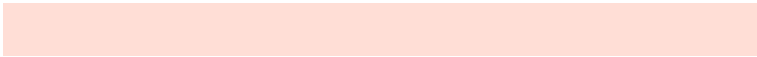
4284133631

Sweetspot

The Sweet Spot groups the original color and five complimentary colors.



4294479477



4294958806



4294473184



4286606439



4278190080



4286611584

Same Dimension

The Same Dimension uses a secret algorithm to generate beautiful new colors.



4294479477



4294933854



4294496117



4286411632



4290585600



4282190848

Inverse Universe

The Inverse Universe completely reimagines the original color for something new.



4285915128



4284408063



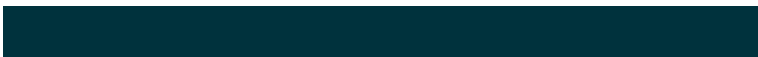
4285898488



4285561725



4278229437



4278202941

Previews

White Background



This preview shows how the Android color 4294479477 looks on a white background.

Color Contrast Check

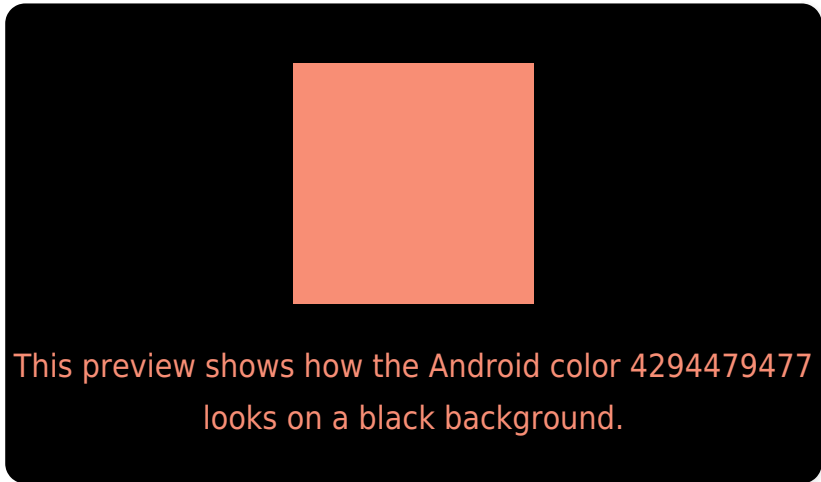
Large Text (above 18pt) WCAG AA × Fail

Any Text WCAG AA × Fail

Large Text (above 18pt) WCAG AAA × Fail

Any Text WCAG AAA × Fail

Black Background



Color Contrast Check

Large Text (above 18pt) WCAG AA ✓ Pass

Any Text WCAG AA ✓ Pass

Large Text (above 18pt) WCAG AAA ✓ Pass

Any Text WCAG AAA ✓ Pass

If you want to check with other color combinations, try the [Color Contrast Checker](#).

Android 4294479477 Background



This preview shows how black text looks on a background with the Android color 4294479477.



This preview shows how white text looks on a background with the Android color 4294479477.

Color Blindness Simulation

Color vision deficiency is a very complex topic, and I could not describe the different causes any better than Wikipedia does, so if you want to learn more, you should check out their [article about color blindness](#).

Dichromacy



Original Color
4294479477

Protanopia
4290227073

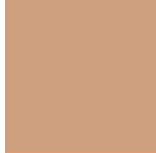
Deuteranopia
4291732593

Trichromacy



Original Color

4294479477



Protanomaly

4291797117



Deuteranomaly

4292713586



Tritanomaly

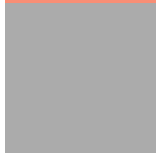
4294544265

Monochromacy



Original Color

4294479477



Achromatopsia

4289440683



Achromatomaly

4291272855

CSS Examples

Text

The CSS property to change the color of the text to Android 4294479477 is called "color". The color property can be set on classes, ids or directly on the HTML element.

This example shows how text in the color `rgb(248, 142, 117)` looks like.

```
.text, #text, p{  
    color:rgb(248, 142, 117)  
}
```

If you want to add a text shadow in that color use the text-shadow property, you can generate a text shadow directly with our [CSS Text Shadow Generator](#).

Here you see how black text with a 4 pixel rgb(248, 142, 117) colored shadow looks like.

```
.shadow{ text-shadow: 4px 4px 2px rgb(248, 142, 117) }
```

Border

The CSS property to change the border of an element to Android 4294479477 is called "border". The border property can be set on classes, ids or directly on the HTML element.

This example shows the color as border, it can be applied via the CSS property "border" or "border-color".

```
.border, #border, table{ border:4px solid rgb(248, 142, 117) }
```

If only the border color should be changed use the property border-color.

```
.border{ border-color:rgb(248, 142, 117) }
```

If you want to add a box shadow in that color use:

Here you see how a box with a 4 pixel rgb(248, 142, 117) colored shadow looks like.

```
.boxshadow{ -moz-box-shadow:4px 4px 4px  
4px rgb(248, 142, 117); -webkit-box-  
shadow:4px 4px 4px 4px rgb(248, 142, 117);  
box-shadow:4px 4px 4px 4px rgb(248, 142,  
117) }
```

Background

The CSS property to change the background color of an element to Android 4294479477 is called "background". The background property can be set on classes, ids or directly on the HTML element.

```
.background, #background, body{  
background: rgb(248, 142, 117) }
```

If only the background color should be changed can be used:

```
.background{ background-color: rgb(248,  
142, 117) }
```

This example shows the color as background, it is applied via the CSS property "background".

To optimize and compress your CSS code, you can use our [online CSS compressor and optimizer](#) based on csstidy. If you want to create a linear or radial gradient as background or border, check our [CSS Gradient Generator](#).

Hey! You found this booklet interesting? Support Converting Colors with the new Membership Option!

The pro membership hides all ads, plus gives you double the colors in the color bucket, and more awesome pro features!

[Learn more, Memberships starting at \\$2.50/m!](#)

**Follow me
on Twitter!**

@ConvertingColor