

Converting Colors

Android(4294481316)

Have a look what the booklet for
Android(4294481316) contains.

Android(4294481316)	3
<i>Conversions</i>	4
<i>Details</i>	6
<i>Harmonies</i>	11
<i>Previews</i>	23
<i>Color Blindness Simulation</i>	26
<i>CSS Examples</i>	29

Color

Android(4294481316)

Conversions

Conversions Part 1

Format	Color
Hex	F895A4
RGB	248, 149, 164
RGB Percent	97%, 58%, 64%
CMY	0.0275, 0.4157, 0.3569
CMYK	0.00, 0.40, 0.34, 0.03
HSL	351°, 88%, 78%
HSV	351°, 40%, 97%
XYZ	56.1597, 44.1317, 40.6803
YIQ	180.3110, 54.1890, 25.6530

Conversions

Conversions Part 2

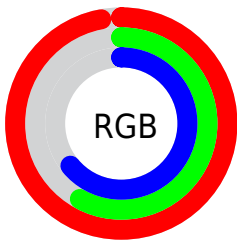
Format	Color
R_{YB}	248, 149, 164
Decimal	16291236
CIE _{Lab}	72.32, 38.89, 8.22
CIE _{LCh}	72, 39.750, 11.938
Yxy	44.1317, 0.3984, 0.3131
Android (android.graphics.Color)	4294481316 (0xFF895A4)
YUV	180.3110, -8.0413, 59.3633
Hunter-Lab	66.4317, 34.6440, 10.1952

Details

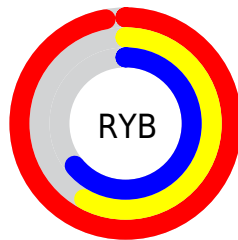
The Android color **4294481316** is a light color, and the websafe version is hex **FF9999**. A complement of this color would be **4288018665**, and the grayscale version is **4290032820**.

A 20% lighter version of the original color is **4294954203**, and **4290601072** is the 20% darker color. If you saturate the color by 10%, you get **4294474895**, and if you desaturate by 10%, it is **4294487737**.

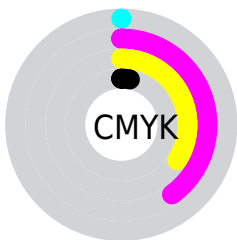
Distribution



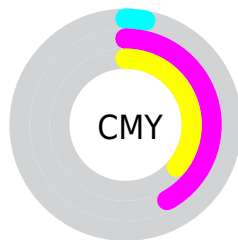
- Red (97%)
- Green (58%)
- Blue (64%)



- Red (97%)
- Yellow (58%)
- Blue (64%)



- Cyan (0%)
- Magenta (40%)
- Yellow (34%)
- Black (3%)



- Cyan (3%)
- Magenta (42%)
- Yellow (36%)

Brightness & Saturation Gradients

These gradients show how the Android color 4294481316 changes by changing the brightness by 10 percent. The first figure shows a shift by +10% for each color and the second figure -10%.

Similar to the brightness gradients but the following saturation gradients show a change of the Android color 4294481316 by changing the saturation by 10% instead.

 4294481316

 4294481316

4294967295

 4292508298

 4294954203

 4290601072

 4294961655

 4288694104

 4286852417

 4285076011

 4283301911

 4281729025

 4279107584

 4278190080

 4294481316

 4294481316

 4294474895

 4294487737

 4294468474

 4294494158

 4294462309

 4294500323

 4294455888

 4294506744

 4294449467

 4294508543

 4294443046

Harmonies

Analogous

The Analogous color harmony consists of three colors that are next to each other on the color wheel.



4293564617



4294481316



4294089858

Triad

The Triadic color harmony groups three colors that are evenly spaced from another and form a triangle on the color wheel.



4294481316



4287872378



4283677686

Complementary

The Complementary color scheme is a pair of colors which are on the opposite of each other on the color wheel.



4294481316



4288018665

Split Complementary

Split-complementary colors differ from the complementary color scheme. The scheme consists of three colors, the original color and two neighbors of the complement color.



4278239969



4294481316



4284859290

Square

The Square scheme is like the rectangle color scheme, but the four colors are evenly spaced on the color wheel.



4294481316



4290491497



4281124287



4287934712

Rectangle

The Rectangle color scheme consists of four colors that form a rectangle on the color wheel.



4294481316



4293239666



4281124287



4282105585

Sweetspot

The Sweet Spot groups the original color and five complimentary colors.



4294481316



4294959333



4293432824



4286606960



4278190080



4286611584

Same Dimension

The Same Dimension uses a secret algorithm to generate beautiful new colors.



4294481316



4294935959



4294489749



4286410866



4290576413



4282187785

Inverse Universe

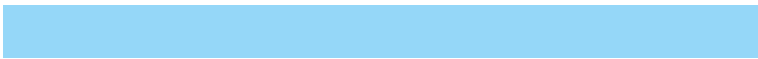
The Inverse Universe completely reimagines the original color for something new.



4294481316



4294935959



4288010232



4286410866



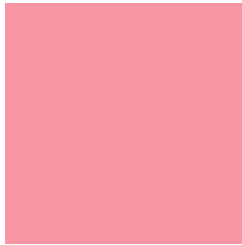
4290576413



4282187785

Previews

White Background



This preview shows how the Android color 4294481316 looks on a white background.

Color Contrast Check

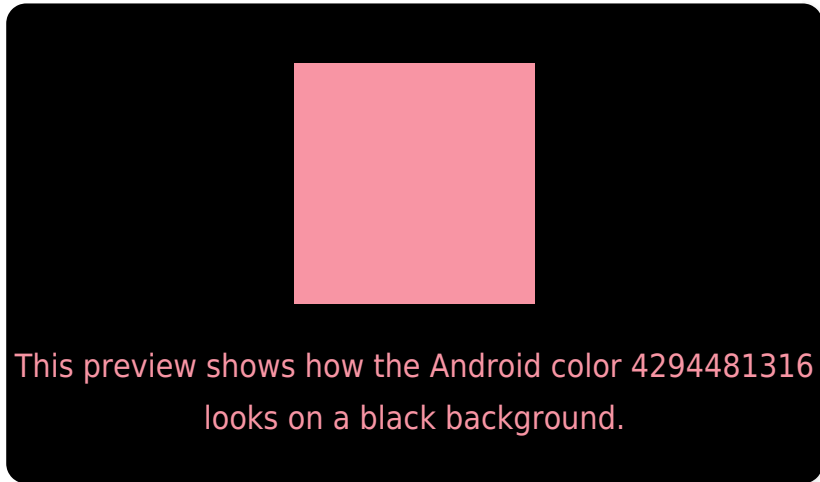
Large Text (above 18pt) WCAG AA × Fail

Any Text WCAG AA × Fail

Large Text (above 18pt) WCAG AAA × Fail

Any Text WCAG AAA × Fail

Black Background



Color Contrast Check

Large Text (above 18pt) WCAG AA ✓ Pass

Any Text WCAG AA ✓ Pass

Large Text (above 18pt) WCAG AAA ✓ Pass

Any Text WCAG AAA ✓ Pass

If you want to check with other color combinations, try the [Color Contrast Checker](#).

Android 4294481316 Background



This preview shows how black text looks on a background with the Android color 4294481316.




This preview shows how white text looks on a background with the Android color 4294481316.

Color Blindness Simulation

Color vision deficiency is a very complex topic, and I could not describe the different causes any better than Wikipedia does, so if you want to learn more, you should check out their [article about color blindness](#).

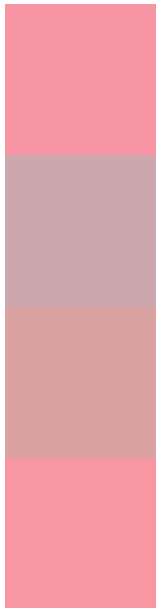
Dichromacy





Tritanopia
4294481569

Trichromacy



Original Color
4294481316

Protanomaly
4291667886

Deuteranomaly
4292518817

Tritanomaly
4294481570

Monochromacy



Original Color
4294481316

Achromatopsia
4290032820

Achromatomaly
4291668398

CSS Examples

Text

The CSS property to change the color of the text to Android 4294481316 is called "color". The color property can be set on classes, ids or directly on the HTML element.

This example shows how text in the color `rgb(248, 149, 164)` looks like.

```
.text, #text, p{  
    color:rgb(248, 149, 164)  
}
```

If you want to add a text shadow in that color use the text-shadow property, you can generate a text shadow directly with our [CSS Text Shadow Generator](#).

Here you see how black text with a 4 pixel rgb(248, 149, 164) colored shadow looks like.

```
.shadow{ text-shadow: 4px 4px 2px rgb(248, 149, 164) }
```

Border

The CSS property to change the border of an element to Android 4294481316 is called "border". The border property can be set on classes, ids or directly on the HTML element.

This example shows the color as border, it can be applied via the CSS property "border" or "border-color".

```
.border, #border, table{ border:4px solid rgb(248, 149, 164) }
```

If only the border color should be changed use the property `border-color`.

```
.border{ border-color:rgb(248, 149, 164) }
```

If you want to add a box shadow in that color use:

Here you see how a box with a 4 pixel `rgb(248, 149, 164)` colored shadow looks like.

```
.boxshadow{ -moz-box-shadow:4px 4px 4px  
4px rgb(248, 149, 164); -webkit-box-  
shadow:4px 4px 4px 4px rgb(248, 149, 164);  
box-shadow:4px 4px 4px 4px rgb(248, 149,  
164) }
```

Background

The CSS property to change the background color of an element to Android 4294481316 is called "background". The background property can be set on classes, ids or directly on the HTML element.

```
.background, #background, body{  
background: rgb(248, 149, 164) }
```

If only the background color should be changed can be used:

```
.background{ background-color: rgb(248,  
149, 164) }
```

This example shows the color as background, it is applied via the CSS property "background".

To optimize and compress your CSS code, you can use our [online CSS compressor and optimizer](#) based on csstidy. If you want to create a linear or radial gradient as background or border, check our [CSS Gradient Generator](#).

Hey! You found this booklet interesting? Support Converting Colors with the new Membership Option!

The pro membership hides all ads, plus gives you double the colors in the color bucket, and more awesome pro features!

[Learn more, Memberships starting at \\$2.50/m!](#)

**Follow me
on Twitter!**

@ConvertingColor