

Converting Colors

Android(4294489281)

Have a look what the booklet for
Android(4294489281) contains.

Android(4294489281)	3
<i>Conversions</i>	4
<i>Details</i>	6
<i>Harmonies</i>	11
<i>Previews</i>	23
<i>Color Blindness Simulation</i>	26
<i>CSS Examples</i>	29

Color

Android(4294489281)

Conversions

Conversions Part 1

Format	Color
Hex	F8B4C1
RGB	248, 180, 193
RGB Percent	97%, 71%, 76%
CMY	0.0275, 0.2941, 0.2431
CMYK	0.00, 0.27, 0.22, 0.03
HSL	349°, 83%, 84%
HSV	349°, 27%, 97%
XYZ	64.6583, 56.4492, 57.9400
YIQ	201.8140, 36.3550, 18.4590

Conversions

Conversions Part 2

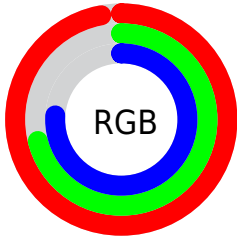
Format	Color
R _Y B	248, 180, 193
Decimal	16299201
CIE Lab	79.87, 26.52, 3.22
CIE LCh	80, 26.710, 6.926
Yxy	56.4492, 0.3611, 0.3153
Android (android.graphics.Color)	4294489281 (0xFFFB4C1)
YUV	201.8140, -4.3453, 40.5051
Hunter-Lab	75.1327, 22.1327, 6.8703

Details

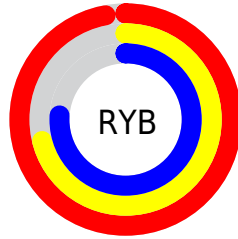
The Android color `4294489281` is a light color, and the websafe version is hex `FFCCCC`. A complement of this color would be `4290050283`, and the grayscale version is `4291480266`.

A 20% lighter version of the original color is `4294962425`, and `4290674572` is the 20% darker color. If you saturate the color by 10%, you get `4294482861`, and if you desaturate by 10%, it is `4294495701`.

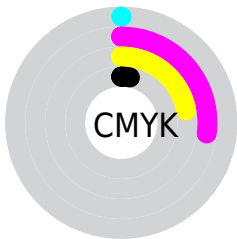
Distribution



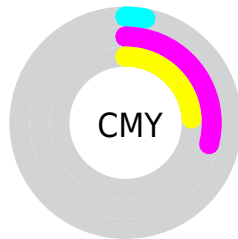
- Red (97%)
- Green (71%)
- Blue (76%)



- Red (97%)
- Yellow (71%)
- Blue (76%)



- Cyan (0%)
- Magenta (27%)
- Yellow (22%)
- Black (3%)



- Cyan (3%)
- Magenta (29%)
- Yellow (24%)

Brightness & Saturation Gradients

These gradients show how the Android color 4294489281 changes by changing the brightness by 10 percent. The first figure shows a shift by +10% for each color and the second figure -10%.

Similar to the brightness gradients but the following saturation gradients show a change of the Android color 4294489281 by changing the saturation by 10% instead.

 4294489281

 4294489281

4294967295

 4292581798

 4294962425

 4290674572

 4288898418

 4287122778

 4285347138

 4283637292

 4281992728

 4280745985

 4278190080

 4294489281

 4294489281

 4294482861

 4294495701

 4294476441

 4294502121

 4294470277

 4294508285

 4294463857

 4294508543

 4294457437

 4294451017

 4294444597

 4294443055

Harmonies

Analogous

The Analogous color harmony consists of three colors that are next to each other on the color wheel.



4293638106



4294489281



4294424489

Triad

The Triadic color harmony groups three colors that are evenly spaced from another and form a triangle on the color wheel.



4294489281



4290236062



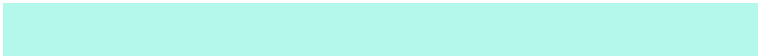
4287680243

Complementary

The Complementary color scheme is a pair of colors which are on the opposite of each other on the color wheel.



4294489281



4290050283

Split Complementary

Split-complementary colors differ from the complementary color scheme. The scheme consists of three colors, the original color and two neighbors of the complement color.



4286567395



4294489281



4288402098

Square

The Square scheme is like the rectangle color scheme, but the four colors are evenly spaced on the color wheel.



4294489281



4292069013



4286895307



4289775351

Rectangle

The Rectangle color scheme consists of four colors that form a rectangle on the color wheel.



4294489281



4293901213



4286895307



4287156463

Sweetspot

The Sweet Spot groups the original color and five complimentary colors.



4294489281



4294962158



4293571832



4286608245



4278190080



4286611584

Same Dimension

The Same Dimension uses a secret algorithm to generate beautiful new colors.



4294489281



4294945723



4294494388



4286410867



4290576420



4282187788

Inverse Universe

The Inverse Universe completely reimagines the original color for something new.



4294489281



4294945723



4290045176



4286410867



4290576420



4282187788

Previews

White Background



This preview shows how the Android color 4294489281 looks on a white background.

Color Contrast Check

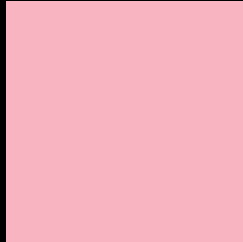
Large Text (above 18pt) WCAG AA × Fail

Any Text WCAG AA × Fail

Large Text (above 18pt) WCAG AAA × Fail

Any Text WCAG AAA × Fail

Black Background



This preview shows how the Android color 4294489281 looks on a black background.

Color Contrast Check

Large Text (above 18pt) WCAG AA ✓ Pass

Any Text WCAG AA ✓ Pass

Large Text (above 18pt) WCAG AAA ✓ Pass

Any Text WCAG AAA ✓ Pass

If you want to check with other color combinations, try the [Color Contrast Checker](#).

Android 4294489281 Background



This preview shows how black text looks on a background with the Android color 4294489281.



This preview shows how white text looks on a background with the Android color 4294489281.

Color Blindness Simulation

Color vision deficiency is a very complex topic, and I could not describe the different causes any better than Wikipedia does, so if you want to learn more, you should check out their [article about color blindness](#).


Dichromacy



Original Color
4294489281

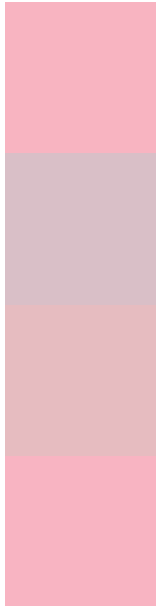
Protanopia
4291347915

Deuteranopia
4292657343



Tritanopia
4294489282

Trichromacy



Original Color
4294489281

Protanomaly
4292460487

Deuteranomaly
4293311680

Tritanomaly
4294489282

Monochromacy



Original Color
4294489281

Achromatopsia
4291480266

Achromatomaly
4292592327

CSS Examples

Text

The CSS property to change the color of the text to Android 4294489281 is called "color". The color property can be set on classes, ids or directly on the HTML element.

This example shows how text in the color `rgb(248, 180, 193)` looks like.

```
.text, #text, p{  
    color:rgb(248, 180, 193)  
}
```

If you want to add a text shadow in that color use the text-shadow property, you can generate a text shadow directly with our [CSS Text Shadow Generator](#).

Here you see how black text with a 4 pixel rgb(248, 180, 193) colored shadow looks like.

```
.shadow{ text-shadow: 4px 4px 2px rgb(248, 180, 193) }
```

Border

The CSS property to change the border of an element to Android 4294489281 is called "border". The border property can be set on classes, ids or directly on the HTML element.

This example shows the color as border, it can be applied via the CSS property "border" or "border-color".

```
.border, #border, table{ border:4px solid rgb(248, 180, 193) }
```

If only the border color should be changed use the property `border-color`.

```
.border{ border-color:rgb(248, 180, 193) }
```

If you want to add a box shadow in that color use:

Here you see how a box with a 4 pixel `rgb(248, 180, 193)` colored shadow looks like.

```
.boxshadow{ -moz-box-shadow:4px 4px 4px  
4px rgb(248, 180, 193); -webkit-box-  
shadow:4px 4px 4px 4px rgb(248, 180, 193);  
box-shadow:4px 4px 4px 4px rgb(248, 180,  
193) }
```

Background

The CSS property to change the background color of an element to Android 4294489281 is called "background". The background property can be set on classes, ids or directly on the HTML element.

```
.background, #background, body{  
background: rgb(248, 180, 193) }
```

If only the background color should be changed can be used:

```
.background{ background-color: rgb(248,  
180, 193) }
```

This example shows the color as background, it is applied via the CSS property "background".

To optimize and compress your CSS code, you can use our [online CSS compressor and optimizer](#) based on csstidy. If you want to create a linear or radial gradient as background or border, check our [CSS Gradient Generator](#).

Hey! You found this booklet interesting? Support Converting Colors with the new Membership Option!

The pro membership hides all ads, plus gives you double the colors in the color bucket, and more awesome pro features!

[Learn more, Memberships starting at \\$2.50/m!](#)

**Follow me
on Twitter!**

@ConvertingColor