

Converting Colors

Android(4294522497)

Have a look what the booklet for
Android(4294522497) contains.

Android(4294522497)	3
<i>Conversions</i>	4
<i>Details</i>	6
<i>Harmonies</i>	11
<i>Previews</i>	23
<i>Color Blindness Simulation</i>	26
<i>CSS Examples</i>	29

Color

Android(4294522497)

Conversions

Conversions Part 1

Format	Color
Hex	F93681
RGB	249, 54, 129
RGB Percent	98%, 21%, 51%
CMY	0.0235, 0.7882, 0.4941
CMYK	0.00, 0.78, 0.48, 0.02
HSL	337°, 94%, 59%
HSV	337°, 78%, 98%
XYZ	44.3485, 24.3630, 23.1340
YIQ	120.8550, 92.1450, 64.6650

Conversions

Conversions Part 2

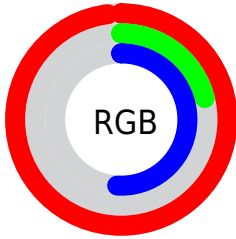
Format	Color
R_{YB}	249, 54, 129
Decimal	16332417
CIE _{Lab}	56.45, 75.53, 5.57
CIE _{LCh}	56, 75.731, 4.219
Yxy	24.3630, 0.4829, 0.2653
Android (android.graphics.Color)	4294522497 (0xFFFF93681)
YUV	120.8550, 4.0155, 112.3832
Hunter-Lab	49.3589, 74.0024, 6.7627

Details

The Android color **4294522497** is a dark color, and the websafe version is hex **FF3399**. The color can be described as middle washed rose. A complement of this color would be **4281792942**, and the grayscale version is **4286151033**.

A 20% lighter version of the original color is **4294932406**, and **4290379856** is the 20% darker color. If you saturate the color by 10%, you get **4294516082**, and if you desaturate by 10%, it is **4294528912**.

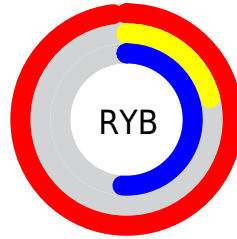
Distribution



Red (98%)

Green (21%)

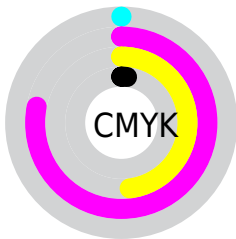
Blue (51%)



Red (98%)

Yellow (21%)

Blue (51%)

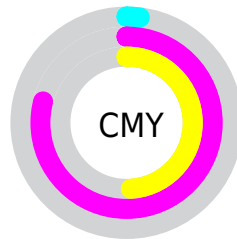


Cyan (0%)

Magenta (78%)

Yellow (48%)

Black (2%)



Cyan (2%)

Magenta (79%)

Yellow (49%)

Brightness & Saturation Gradients

These gradients show how the Android color 4294522497 changes by changing the brightness by 10 percent. The first figure shows a shift by +10% for each color and the second figure -10%.

Similar to the brightness gradients but the following saturation gradients show a change of the Android color 4294522497 by changing the saturation by 10% instead.



4294522497



4294522497

4294967295



4292411496



4294932406



4290379856



4294940113



4288348218



4294947821



4286382117



4294955519



4284350479



4294963199



4282449923



4280221697



4278190080



4294522497



4294522497

 4294516082

 4294528912

 4294509666

 4294535328

 4294508640

 4294541743

 4294548158

 4294554574

 4294560733

 4294567148

 4294573564

 4294574079

Harmonies

Analogous

The Analogous color harmony consists of three colors that are next to each other on the color wheel.



4292627906



4294522497



4294069313

Triad

The Triadic color harmony groups three colors that are evenly spaced from another and form a triangle on the color wheel.



4294522497



4283865088



4278230526

Complementary

The Complementary color scheme is a pair of colors which are on the opposite of each other on the color wheel.



4294522497



4281792942

Split Complementary

Split-complementary colors differ from the complementary color scheme. The scheme consists of three colors, the original color and two neighbors of the complement color.



4278232272



4294522497



4278231370

Square

The Square scheme is like the rectangle color scheme, but the four colors are evenly spaced on the color wheel.



4294522497



4288382976



4278232207



4278226431

Rectangle

The Rectangle color scheme consists of four colors that form a rectangle on the color wheel.



4294522497



4292698899



4278232207



4278231282

Sweetspot

The Sweet Spot groups the original color and five complimentary colors.



4294522497



4294952155



4289410809



4286602346



4278190080



4286611584

Same Dimension

The Same Dimension uses a secret algorithm to generate beautiful new colors.



4294522497



4294905707



4294527542



4286410869



4290576457



4282187800

Inverse Universe

The Inverse Universe completely reimagines the original color for something new.



4294522497



4294905707



4281787897



4286410869



4290576457



4282187800

Previews

White Background



This preview shows how the Android color 4294522497 looks on a white background.

Color Contrast Check

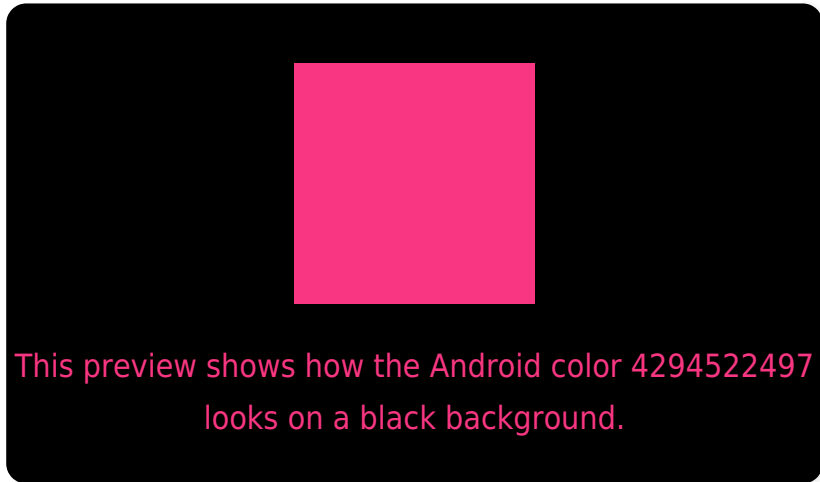
Large Text (above 18pt) WCAG AA ✓ Pass

Any Text WCAG AA × Fail

Large Text (above 18pt) WCAG AAA × Fail

Any Text WCAG AAA × Fail

Black Background



Color Contrast Check

Large Text (above 18pt) WCAG AA ✓ Pass

Any Text WCAG AA ✓ Pass

Large Text (above 18pt) WCAG AAA ✓ Pass

Any Text WCAG AAA × Fail

If you want to check with other color combinations, try the [Color Contrast Checker](#).

Android 4294522497 Background



This preview shows how black text looks on a background with the Android color 4294522497.



This preview shows how white text looks on a background with the Android color 4294522497.

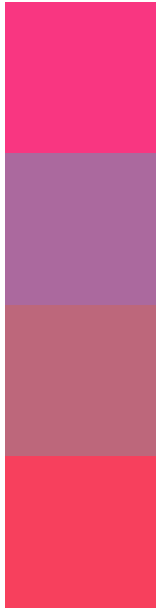
Color Blindness Simulation

Color vision deficiency is a very complex topic, and I could not describe the different causes any better than Wikipedia does, so if you want to learn more, you should check out their [article about color blindness](#).

Dichromacy



Trichromacy



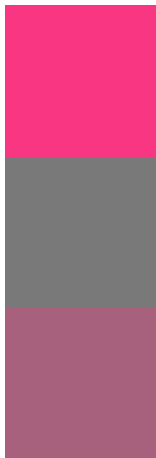
Original Color
4294522497

Protanomaly
4289423774

Deuteranomaly
4290602875

Tritanomaly
4294393949

Monochromacy



Original Color
4294522497

Achromatopsia
4286151033

Achromatomaly
4289225084

CSS Examples

Text

The CSS property to change the color of the text to Android 4294522497 is called "color". The color property can be set on classes, ids or directly on the HTML element.

This example shows how text in the color `rgb(249, 54, 129)` looks like.

```
.text, #text, p{  
    color:rgb(249, 54, 129)  
}
```

If you want to add a text shadow in that color use the text-shadow property, you can generate a text shadow directly with our [CSS Text Shadow Generator](#).

Here you see how black text with a 4 pixel rgb(249, 54, 129) colored shadow looks like.

```
.shadow{ text-shadow: 4px 4px 2px rgb(249, 54, 129) }
```

Border

The CSS property to change the border of an element to Android 4294522497 is called "border". The border property can be set on classes, ids or directly on the HTML element.

This example shows the color as border, it can be applied via the CSS property "border" or "border-color".

```
.border, #border, table{ border:4px solid rgb(249, 54, 129) }
```

If only the border color should be changed use the property `border-color`.

```
.border{ border-color:rgb(249, 54, 129) }
```

If you want to add a box shadow in that color use:

Here you see how a box with a 4 pixel `rgb(249, 54, 129)` colored shadow looks like.

```
.boxshadow{ -moz-box-shadow:4px 4px 4px  
4px rgb(249, 54, 129); -webkit-box-  
shadow:4px 4px 4px 4px rgb(249, 54, 129);  
box-shadow:4px 4px 4px 4px rgb(249, 54,  
129) }
```

Background

The CSS property to change the background color of an element to Android 4294522497 is called "background". The background property can be set on classes, ids or directly on the HTML element.

```
.background, #background, body{  
background: rgb(249, 54, 129) }
```

If only the background color should be changed can be used:

```
.background{ background-color: rgb(249, 54,  
129) }
```

This example shows the color as background, it is applied via the CSS property "background".

To optimize and compress your CSS code, you can use our [online CSS compressor and optimizer](#) based on csstidy. If you want to create a linear or radial gradient as background or border, check our [CSS Gradient Generator](#).

Hey! You found this booklet interesting? Support Converting Colors with the new Membership Option!

The pro membership hides all ads, plus gives you double the colors in the color bucket, and more awesome pro features!

[Learn more, Memberships starting at \\$2.50/m!](#)

**Follow me
on Twitter!**

@ConvertingColor