

Converting Colors

Android(4294523002)

Have a look what the booklet for
Android(4294523002) contains.

Android(4294523002)	3
<i>Conversions</i>	4
<i>Details</i>	6
<i>Harmonies</i>	11
<i>Previews</i>	23
<i>Color Blindness Simulation</i>	26
<i>CSS Examples</i>	29

Color

Android(4294523002)

Conversions

Conversions Part 1

Format	Color
Hex	F9387A
RGB	249, 56, 122
RGB Percent	98%, 22%, 48%
CMY	0.0235, 0.7804, 0.5216
CMYK	0.00, 0.78, 0.51, 0.02
HSL	339°, 94%, 60%
HSV	339°, 78%, 98%
XYZ	43.9939, 24.3732, 20.7981
YIQ	121.2310, 93.8420, 61.4420

Conversions

Conversions Part 2

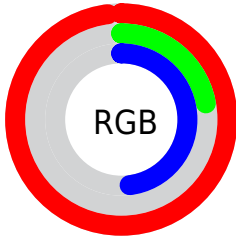
Format	Color
R_{YB}	249, 56, 122
Decimal	16332922
CIE _{Lab}	56.46, 74.45, 9.75
CIE _{LCh}	56, 75.082, 7.460
Yxy	24.3732, 0.4934, 0.2733
Android (android.graphics.Color)	4294523002 (0xFFFF9387A)
YUV	121.2310, 0.3791, 112.0534
Hunter-Lab	49.3692, 72.6688, 9.5810

Details

The Android color **4294523002** is a dark color, and the websafe version is hex **FF3366**. The color can be described as middle washed rose. A complement of this color would be **4281924023**, and the grayscale version is **4286151033**.

A 20% lighter version of the original color is **4294932654**, and **4290379850** is the 20% darker color. If you saturate the color by 10%, you get **4294516586**, and if you desaturate by 10%, it is **4294529418**.

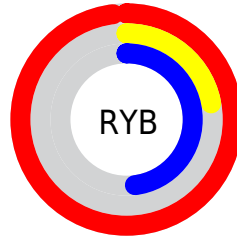
Distribution



Red (98%)

Green (22%)

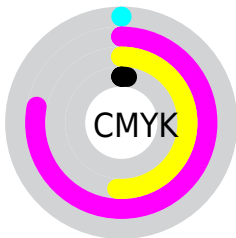
Blue (48%)



Red (98%)

Yellow (22%)

Blue (48%)

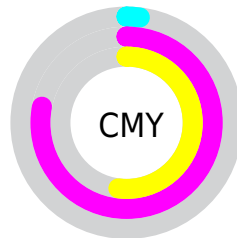


Cyan (0%)

Magenta (78%)

Yellow (51%)

Black (2%)



Cyan (2%)

Magenta (78%)

Yellow (52%)

Brightness & Saturation Gradients

These gradients show how the Android color 4294523002 changes by changing the brightness by 10 percent. The first figure shows a shift by +10% for each color and the second figure -10%.

Similar to the brightness gradients but the following saturation gradients show a change of the Android color 4294523002 by changing the saturation by 10% instead.



4294523002



4294523002

4294967295



4292411489



4294932654



4290379850



4294940361



4288348212



4294948069



4286316575



4294955775



4284350470



4294963455



4282384387



4280156161



4278190080



4294523002



4294523002

 4294516586

 4294529418

 4294510169

 4294535835

 4294508629

 4294542251

 4294548668

 4294554828

 4294561244

 4294567661

 4294574077

 4294574079

Harmonies

Analogous

The Analogous color harmony consists of three colors that are next to each other on the color wheel.



4292889275



4294523002



4293873723

Triad

The Triadic color harmony groups three colors that are evenly spaced from another and form a triangle on the color wheel.



4294523002



4283275520



4278230271

Complementary

The Complementary color scheme is a pair of colors which are on the opposite of each other on the color wheel.



4294523002



4281924023

Split Complementary

Split-complementary colors differ from the complementary color scheme. The scheme consists of three colors, the original color and two neighbors of the complement color.



4278232022



4294523002



4278231378

Square

The Square scheme is like the rectangle color scheme, but the four colors are evenly spaced on the color wheel.



4294523002



4287990272



4278232215



4278225663

Rectangle

The Rectangle color scheme consists of four colors that form a rectangle on the color wheel.



4294523002



4292437768



4278232215



4278231030

Sweetspot

The Sweet Spot groups the original color and five complimentary colors.



4294523002



4294952152



4290066681



4286602344



4278190080



4286611584

Same Dimension

The Same Dimension uses a secret algorithm to generate beautiful new colors.



4294523002



4294906467



4294530360



4286410869



4290576449



4282187797

Inverse Universe

The Inverse Universe completely reimagines the original color for something new.



4294523002



4294906467



4281916665



4286410869



4290576449



4282187797

Previews

White Background



This preview shows how the Android color 4294523002 looks on a white background.

Color Contrast Check

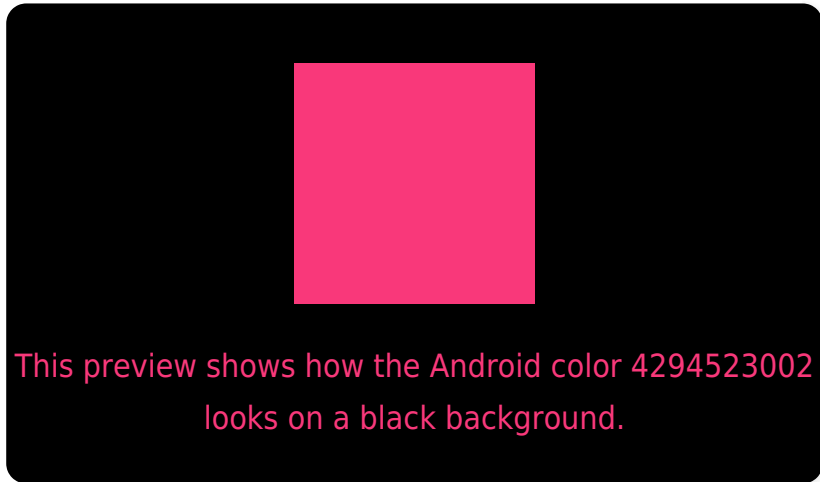
Large Text (above 18pt) WCAG AA ✓ Pass

Any Text WCAG AA ✗ Fail

Large Text (above 18pt) WCAG AAA ✗ Fail

Any Text WCAG AAA ✗ Fail

Black Background



Color Contrast Check

Large Text (above 18pt) WCAG AA ✓ Pass

Any Text WCAG AA ✓ Pass

Large Text (above 18pt) WCAG AAA ✓ Pass

Any Text WCAG AAA × Fail

If you want to check with other color combinations, try the [Color Contrast Checker](#).

Android 4294523002 Background



This preview shows how black text looks on a background with the Android color 4294523002.



This preview shows how white text looks on a background with the Android color 4294523002.

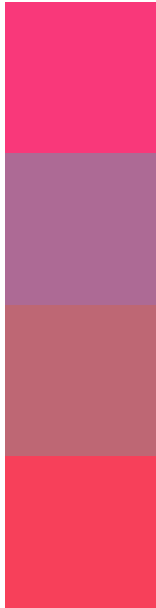
Color Blindness Simulation

Color vision deficiency is a very complex topic, and I could not describe the different causes any better than Wikipedia does, so if you want to learn more, you should check out their [article about color blindness](#).

Dichromacy



Trichromacy



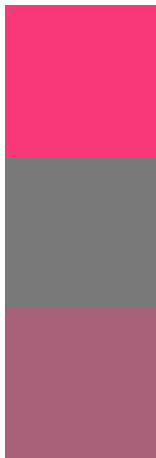
Original Color
4294523002

Protanomaly
4289555093

Deuteranomaly
4290668404

Tritanomaly
4294393946

Monochromacy



Original Color
4294523002

Achromatopsia
4286151033

Achromatomaly
4289225081

CSS Examples

Text

The CSS property to change the color of the text to Android 4294523002 is called "color". The color property can be set on classes, ids or directly on the HTML element.

This example shows how text in the color `rgb(249, 56, 122)` looks like.

```
.text, #text, p{  
    color:rgb(249, 56, 122)  
}
```

If you want to add a text shadow in that color use the text-shadow property, you can generate a text shadow directly with our [CSS Text Shadow Generator](#).

Here you see how black text with a 4 pixel rgb(249, 56, 122) colored shadow looks like.

```
.shadow{ text-shadow: 4px 4px 2px rgb(249, 56, 122) }
```

Border

The CSS property to change the border of an element to Android 4294523002 is called "border". The border property can be set on classes, ids or directly on the HTML element.

This example shows the color as border, it can be applied via the CSS property "border" or "border-color".

```
.border, #border, table{ border:4px solid rgb(249, 56, 122) }
```

If only the border color should be changed use the property border-color.

```
.border{ border-color:rgb(249, 56, 122) }
```

If you want to add a box shadow in that color use:

Here you see how a box with a 4 pixel rgb(249, 56, 122) colored shadow looks like.

```
.boxshadow{ -moz-box-shadow:4px 4px 4px  
4px rgb(249, 56, 122); -webkit-box-  
shadow:4px 4px 4px 4px rgb(249, 56, 122);  
box-shadow:4px 4px 4px 4px rgb(249, 56,  
122) }
```

Background

The CSS property to change the background color of an element to Android 4294523002 is called "background". The background property can be set on classes, ids or directly on the HTML element.

```
.background, #background, body{  
background: rgb(249, 56, 122) }
```

If only the background color should be changed can be used:

```
.background{ background-color: rgb(249, 56,  
122) }
```

This example shows the color as background, it is applied via the CSS property "background".

To optimize and compress your CSS code, you can use our [online CSS compressor and optimizer](#) based on csstidy. If you want to create a linear or radial gradient as background or border, check our [CSS Gradient Generator](#).

Hey! You found this booklet interesting? Support Converting Colors with the new Membership Option!

The pro membership hides all ads, plus gives you double the colors in the color bucket, and more awesome pro features!

[Learn more, Memberships starting at \\$2.50/m!](#)

**Follow me
on Twitter!**

@ConvertingColor