

Converting Colors

Android(4294523765)

Have a look what the booklet for
Android(4294523765) contains.

Android(4294523765)	3
<i>Conversions</i>	4
<i>Details</i>	6
<i>Harmonies</i>	11
<i>Previews</i>	23
<i>Color Blindness Simulation</i>	26
<i>CSS Examples</i>	29

Color

Android(4294523765)

Conversions

Conversions Part 1

Format	Color
Hex	F93B75
RGB	249, 59, 117
RGB Percent	98%, 23%, 46%
CMY	0.0235, 0.7686, 0.5412
CMYK	0.00, 0.76, 0.53, 0.02
HSL	342°, 94%, 60%
HSV	342°, 76%, 98%
XYZ	43.8418, 24.5520, 19.2579
YIQ	122.4220, 94.6220, 58.3180

Conversions

Conversions Part 2

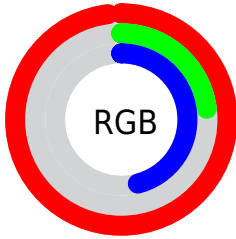
Format	Color
R_{YB}	249, 59, 117
Decimal	16333685
CIE _{Lab}	56.64, 73.24, 12.97
CIE _{LCh}	57, 74.377, 10.042
Yxy	24.5520, 0.5002, 0.2801
Android (android.graphics.Color)	4294523765 (0xFFFF93B75)
YUV	122.4220, -2.6730, 111.0089
Hunter-Lab	49.5500, 71.2241, 11.6416

Details

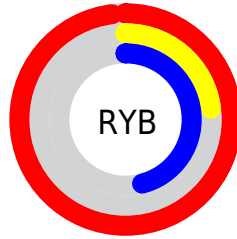
The Android color **4294523765** is a dark color, and the websafe version is hex **FF3366**. The color can be described as middle washed rose. A complement of this color would be **4282120639**, and the grayscale version is **4286216826**.

A 20% lighter version of the original color is **4294933161**, and **4290379845** is the 20% darker color. If you saturate the color by 10%, you get **4294517348**, and if you desaturate by 10%, it is **4294530182**.

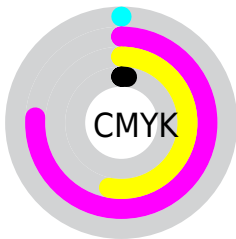
Distribution



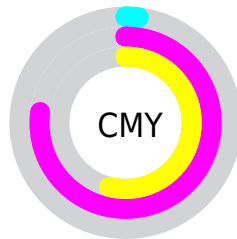
- Red (98%)
- Green (23%)
- Blue (46%)



- Red (98%)
- Yellow (23%)
- Blue (46%)



- Cyan (0%)
- Magenta (76%)
- Yellow (53%)
- Black (2%)



- Cyan (2%)
- Magenta (77%)
- Yellow (54%)

Brightness & Saturation Gradients

These gradients show how the Android color 4294523765 changes by changing the brightness by 10 percent. The first figure shows a shift by +10% for each color and the second figure -10%.

Similar to the brightness gradients but the following saturation gradients show a change of the Android color 4294523765 by changing the saturation by 10% instead.



4294523765



4294523765

4294967295



4292413533



4294933161



4290379845



4294940868



4288348207



4294948576



4286316571



4294956028



4284350466



4294963967



4282384387



4280090625



4278190080



4294523765



4294523765

 4294517348

 4294530182

 4294510930

 4294536600

 4294508620

 4294543017

 4294549434

 4294555595

 4294562013

 4294568430

 4294574079

Harmonies

Analogous

The Analogous color harmony consists of three colors that are next to each other on the color wheel.



4293151158



4294523765



4293678391

Triad

The Triadic color harmony groups three colors that are evenly spaced from another and form a triangle on the color wheel.



4294523765



4282817036



4278230015

Complementary

The Complementary color scheme is a pair of colors which are on the opposite of each other on the color wheel.



4294523765



4282120639

Split Complementary

Split-complementary colors differ from the complementary color scheme. The scheme consists of three colors, the original color and two neighbors of the complement color.



4278232026



4294523765



4278231641

Square

The Square scheme is like the rectangle color scheme, but the four colors are evenly spaced on the color wheel.



4294523765



4287663104



4278232477



4278225407

Rectangle

The Rectangle color scheme consists of four colors that form a rectangle on the color wheel.



4294523765



4292176385



4278232477



4278230776

Sweetspot

The Sweet Spot groups the original color and five complimentary colors.



4294523765



4294952150



4290591737



4286602343



4278190080



4286611584

Same Dimension

The Same Dimension uses a secret algorithm to generate beautiful new colors.



4294523765



4294906972



4294532667



4286410868



4290576442



4282187795

Inverse Universe

The Inverse Universe completely reimagines the original color for something new.



4294523765



4294906972



4282111737



4286410868



4290576442



4282187795

Previews

White Background



This preview shows how the Android color 4294523765 looks on a white background.

Color Contrast Check

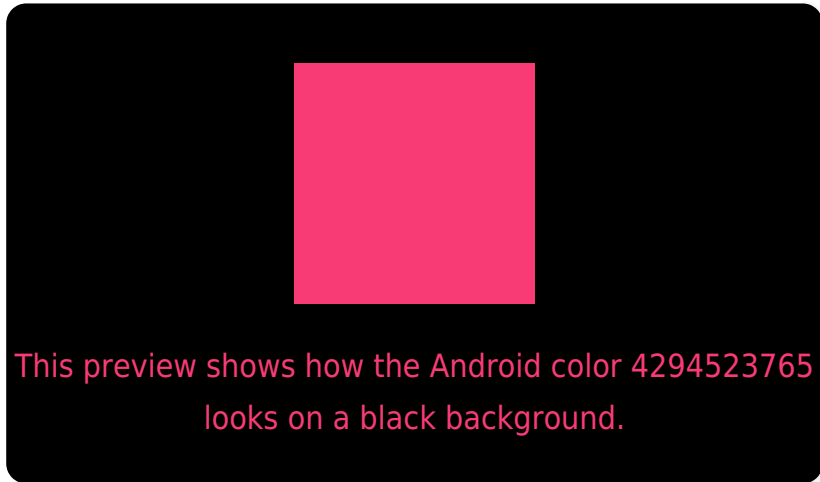
Large Text (above 18pt) WCAG AA ✓ Pass

Any Text WCAG AA ✗ Fail

Large Text (above 18pt) WCAG AAA ✗ Fail

Any Text WCAG AAA ✗ Fail

Black Background



Color Contrast Check

Large Text (above 18pt) WCAG AA ✓ Pass

Any Text WCAG AA ✓ Pass

Large Text (above 18pt) WCAG AAA ✓ Pass

Any Text WCAG AAA × Fail

If you want to check with other color combinations, try the [Color Contrast Checker](#).

Android 4294523765 Background



This preview shows how black text looks on a background with the Android color 4294523765.



This preview shows how white text looks on a background with the Android color 4294523765.

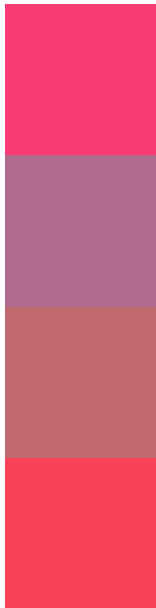
Color Blindness Simulation

Color vision deficiency is a very complex topic, and I could not describe the different causes any better than Wikipedia does, so if you want to learn more, you should check out their [article about color blindness](#).

Dichromacy



Trichromacy



Original Color
4294523765

Protanomaly
4289686414

Deuteranomaly
4290799983

Tritanomaly
4294459993

Monochromacy



Original Color
4294523765

Achromatopsia
4286216826

Achromatomaly
4289225592

CSS Examples

Text

The CSS property to change the color of the text to Android 4294523765 is called "color". The color property can be set on classes, ids or directly on the HTML element.

This example shows how text in the color `rgb(249, 59, 117)` looks like.

```
.text, #text, p{  
    color:rgb(249, 59, 117)  
}
```

If you want to add a text shadow in that color use the text-shadow property, you can generate a text shadow directly with our [CSS Text Shadow Generator](#).

Here you see how black text with a 4 pixel rgb(249, 59, 117) colored shadow looks like.

```
.shadow{ text-shadow: 4px 4px 2px rgb(249, 59, 117) }
```

Border

The CSS property to change the border of an element to Android 4294523765 is called "border". The border property can be set on classes, ids or directly on the HTML element.

This example shows the color as border, it can be applied via the CSS property "border" or "border-color".

```
.border, #border, table{ border:4px solid rgb(249, 59, 117) }
```

If only the border color should be changed use the property `border-color`.

```
.border{ border-color:rgb(249, 59, 117) }
```

If you want to add a box shadow in that color use:

Here you see how a box with a 4 pixel `rgb(249, 59, 117)` colored shadow looks like.

```
.boxshadow{ -moz-box-shadow:4px 4px 4px  
4px rgb(249, 59, 117); -webkit-box-  
shadow:4px 4px 4px 4px rgb(249, 59, 117);  
box-shadow:4px 4px 4px 4px rgb(249, 59,  
117) }
```

Background

The CSS property to change the background color of an element to Android 4294523765 is called "background". The background property can be set on classes, ids or directly on the HTML element.

```
.background, #background, body{  
background: rgb(249, 59, 117) }
```

If only the background color should be changed can be used:

```
.background{ background-color: rgb(249, 59,  
117) }
```

This example shows the color as background, it is applied via the CSS property "background".

To optimize and compress your CSS code, you can use our [online CSS compressor and optimizer](#) based on csstidy. If you want to create a linear or radial gradient as background or border, check our [CSS Gradient Generator](#).

Hey! You found this booklet interesting? Support Converting Colors with the new Membership Option!

The pro membership hides all ads, plus gives you double the colors in the color bucket, and more awesome pro features!

[Learn more, Memberships starting at \\$2.50/m!](#)

**Follow me
on Twitter!**

@ConvertingColor