

Converting Colors

Android(4294582872)

Have a look what the booklet for
Android(4294582872) contains.

Android(4294582872)	3
<i>Conversions</i>	4
<i>Details</i>	6
<i>Harmonies</i>	11
<i>Previews</i>	23
<i>Color Blindness Simulation</i>	26
<i>CSS Examples</i>	29

Color

Android(4294582872)

Conversions

Conversions Part 1

Format	Color
Hex	FA2258
RGB	250, 34, 88
RGB Percent	98%, 13%, 35%
CMY	0.0196, 0.8667, 0.6549
CMYK	0.00, 0.86, 0.65, 0.02
HSL	345°, 96%, 56%
HSV	345°, 86%, 98%
XYZ	41.7578, 22.1726, 11.3114
YIQ	104.7400, 111.4020, 62.5860

Conversions

Conversions Part 2

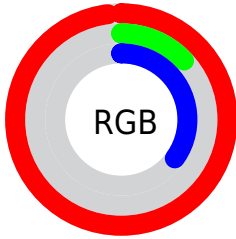
Format	Color
R _Y B	250, 34, 88
Decimal	16392792
CIE Lab	54.21, 77.48, 27.03
CIE LCh	54, 82.057, 19.234
Yxy	22.1726, 0.5550, 0.2947
Android (android.graphics.Color)	4294582872 (0xFFFA2258)
YUV	104.7400, -8.2528, 127.3930
Hunter-Lab	47.0878, 75.8914, 18.7189

Details

The Android color **4294582872** is a dark color, and the websafe version is hex **FF3366**. The color can be described as dark washed red. A complement of this color would be **4280482500**, and the grayscale version is **4285098345**.

A 20% lighter version of the original color is **4294929290**, and **4290314283** is the 20% darker color. If you saturate the color by 10%, you get **4294576453**, and if you desaturate by 10%, it is **4294589291**.

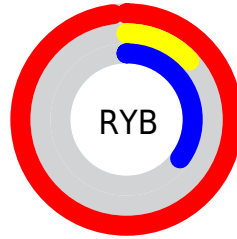
Distribution



Red (98%)

Green (13%)

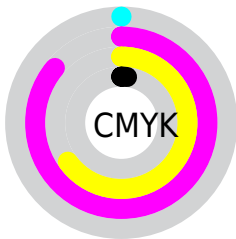
Blue (35%)



Red (98%)

Yellow (13%)

Blue (35%)

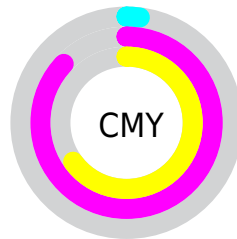


Cyan (0%)

Magenta (86%)

Yellow (65%)

Black (2%)



Cyan (2%)

Magenta (87%)

Yellow (65%)

Brightness & Saturation Gradients

These gradients show how the Android color 4294582872 changes by changing the brightness by 10 percent. The first figure shows a shift by +10% for each color and the second figure -10%.

Similar to the brightness gradients but the following saturation gradients show a change of the Android color 4294582872 by changing the saturation by 10% instead.



4294582872



4294582872

4294967295



4292411457



4294929290



4290314283



4294937252



4288217112



4294944959



4286185473



4294952666



4284088323



4294960375



4282056707



4279566336



4278190080



4294582872



4294582872

■ 4294576453

■ 4294589291

■ 4294574143

■ 4294595710

■ 4294602128

■ 4294608547

■ 4294614966

■ 4294621384

■ 4294627803

■ 4294634222

■ 4294639615

Harmonies

Analogous

The Analogous color harmony consists of three colors that are next to each other on the color wheel.



4293927326



4294582872



4293022219

Triad

The Triadic color harmony groups three colors that are evenly spaced from another and form a triangle on the color wheel.



4294582872



4278229007



4278227711

Complementary

The Complementary color scheme is a pair of colors which are on the opposite of each other on the color wheel.



4294582872



4280482500

Split Complementary

Split-complementary colors differ from the complementary color scheme. The scheme consists of three colors, the original color and two neighbors of the complement color.



4278230509



4294582872



4278230629

Square

The Square scheme is like the rectangle color scheme, but the four colors are evenly spaced on the color wheel.



4294582872



4285697024



4278231215



4279991039

Rectangle

The Rectangle color scheme consists of four colors that form a rectangle on the color wheel.



4294582872



4291062528



4278231215



4278228991

Sweetspot

The Sweet Spot groups the original color and five complimentary colors.



4294582872



4294950349



4291044090



4286601314



4278190080



4286611584

Same Dimension

The Same Dimension uses a secret algorithm to generate beautiful new colors.



4294582872



4294901824



4294596642



4286410868



4290576431



4282187791

Inverse Universe

The Inverse Universe completely reimagines the original color for something new.



4294582872



4294901824



4280468730



4286410868



4290576431



4282187791

Previews

White Background



This preview shows how the Android color 4294582872 looks on a white background.

Color Contrast Check

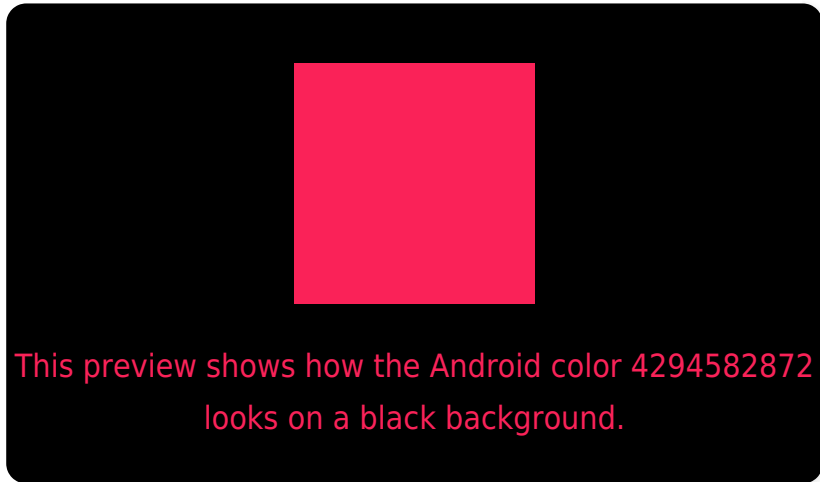
Large Text (above 18pt) WCAG AA ✓ Pass

Any Text WCAG AA ✗ Fail

Large Text (above 18pt) WCAG AAA ✗ Fail

Any Text WCAG AAA ✗ Fail

Black Background



Color Contrast Check

Large Text (above 18pt) WCAG AA ✓ Pass

Any Text WCAG AA ✓ Pass

Large Text (above 18pt) WCAG AAA ✓ Pass

Any Text WCAG AAA × Fail

If you want to check with other color combinations, try the [Color Contrast Checker](#).

Android 4294582872 Background



This preview shows how black text looks on a background with the Android color 4294582872.



This preview shows how white text looks on a background with the Android color 4294582872.

Color Blindness Simulation

Color vision deficiency is a very complex topic, and I could not describe the different causes any better than Wikipedia does, so if you want to learn more, you should check out their [article about color blindness](#).

Dichromacy

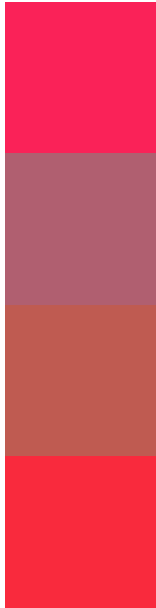


Original Color
4294582872

Protanopia
4286939774

Deuteranopia
4288576589

Trichromacy



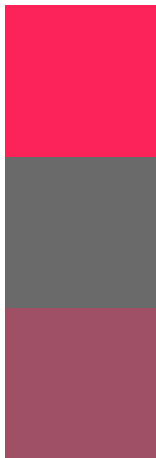
Original Color
4294582872

Protanomaly
4289748848

Deuteranomaly
4290730833

Tritanomaly
4294519357

Monochromacy



Original Color
4294582872

Achromatopsia
4285098345

Achromatomaly
4288565091

CSS Examples

Text

The CSS property to change the color of the text to Android 4294582872 is called "color". The color property can be set on classes, ids or directly on the HTML element.

This example shows how text in the color `rgb(250, 34, 88)` looks like.

```
.text, #text, p{  
    color:rgb(250, 34, 88)  
}
```

If you want to add a text shadow in that color use the text-shadow property, you can generate a text shadow directly with our [CSS Text Shadow Generator](#).

Here you see how black text with a 4 pixel rgb(250, 34, 88) colored shadow looks like.

```
.shadow{ text-shadow: 4px 4px 2px rgb(250, 34, 88) }
```

Border

The CSS property to change the border of an element to Android 4294582872 is called "border". The border property can be set on classes, ids or directly on the HTML element.

This example shows the color as border, it can be applied via the CSS property "border" or "border-color".

```
.border, #border, table{ border:4px solid rgb(250, 34, 88) }
```

If only the border color should be changed use the property border-color.

```
.border{ border-color:rgb(250, 34, 88) }
```

If you want to add a box shadow in that color use:

Here you see how a box with a 4 pixel rgb(250, 34, 88) colored shadow looks like.

```
.boxshadow{ -moz-box-shadow:4px 4px 4px  
4px rgb(250, 34, 88); -webkit-box-  
shadow:4px 4px 4px 4px rgb(250, 34, 88);  
box-shadow:4px 4px 4px 4px rgb(250, 34,  
88) }
```

Background

The CSS property to change the background color of an element to Android 4294582872 is called "background". The background property can be set on classes, ids or directly on the HTML element.

```
.background, #background, body{  
background: rgb(250, 34, 88) }
```

If only the background color should be changed can be used:

```
.background{ background-color: rgb(250, 34,  
88) }
```

This example shows the color as background, it is applied via the CSS property "background".

To optimize and compress your CSS code, you can use our [online CSS compressor and optimizer](#) based on csstidy. If you want to create a linear or radial gradient as background or border, check our [CSS Gradient Generator](#).

Hey! You found this booklet interesting? Support Converting Colors with the new Membership Option!

The pro membership hides all ads, plus gives you double the colors in the color bucket, and more awesome pro features!

[Learn more, Memberships starting at \\$2.50/m!](#)

**Follow me
on Twitter!**

@ConvertingColor