

Converting Colors

Android(4294590595)

Have a look what the booklet for
Android(4294590595) contains.

Android(4294590595)	3
<i>Conversions</i>	4
<i>Details</i>	6
<i>Harmonies</i>	11
<i>Previews</i>	23
<i>Color Blindness Simulation</i>	26
<i>CSS Examples</i>	29

Color

Android(4294590595)

Conversions

Conversions Part 1

Format	Color
Hex	FA4083
RGB	250, 64, 131
RGB Percent	98%, 25%, 51%
CMY	0.0196, 0.7490, 0.4863
CMYK	0.00, 0.74, 0.48, 0.02
HSL	338°, 95%, 62%
HSV	338°, 74%, 98%
XYZ	45.3545, 25.6295, 24.0293
YIQ	127.2520, 89.3490, 60.2690

Conversions

Conversions Part 2

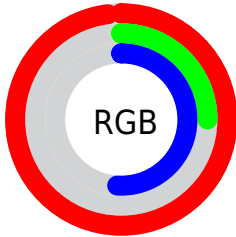
Format	Color
R _Y B	250, 64, 131
Decimal	16400515
CIE Lab	57.68, 73.12, 6.18
CIE LCh	58, 73.377, 4.830
Yxy	25.6295, 0.4773, 0.2697
Android (android.graphics.Color)	4294590595 (0xFFFA4083)
YUV	127.2520, 1.8478, 107.6500
Hunter-Lab	50.6256, 71.3200, 7.2961

Details

The Android color **4294590595** is a light color, and the websafe version is hex **FF6699**. The color can be described as light washed rose. A complement of this color would be **4282448567**, and the grayscale version is **4286545791**.

A 20% lighter version of the original color is **4294934200**, and **4290445394** is the 20% darker color. If you saturate the color by 10%, you get **4294584179**, and if you desaturate by 10%, it is **4294597011**.

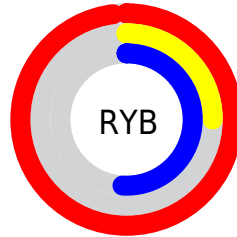
Distribution



Red (98%)

Green (25%)

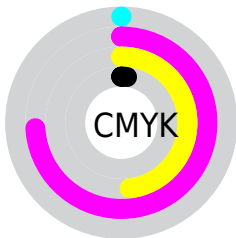
Blue (51%)



Red (98%)

Yellow (25%)

Blue (51%)

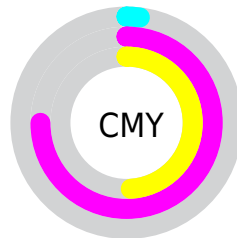


Cyan (0%)

Magenta (74%)

Yellow (48%)

Black (2%)



Cyan (2%)

Magenta (75%)

Yellow (49%)

Brightness & Saturation Gradients

These gradients show how the Android color 4294590595 changes by changing the brightness by 10 percent. The first figure shows a shift by +10% for each color and the second figure -10%.

Similar to the brightness gradients but the following saturation gradients show a change of the Android color 4294590595 by changing the saturation by 10% instead.



4294590595



4294590595

4294967295



4292547690



4294934200



4290445394



4294941907



4288479291



4294949616



4286447654



4294957055



4284481553



4294964991



4282580995



4280418305



4278190080



4294590595



4294590595

■ 4294584179

■ 4294597011

■ 4294577763

■ 4294603427

■ 4294574170

■ 4294609843

■ 4294616259

■ 4294622675

■ 4294629091

■ 4294635507

■ 4294639615

Harmonies

Analogous

The Analogous color harmony consists of three colors that are next to each other on the color wheel.



4292760514



4294590595



4294136645

Triad

The Triadic color harmony groups three colors that are evenly spaced from another and form a triangle on the color wheel.



4294590595



4284128000



4278231039

Complementary

The Complementary color scheme is a pair of colors which are on the opposite of each other on the color wheel.



4294590595



4282448567

Split Complementary

Split-complementary colors differ from the complementary color scheme. The scheme consists of three colors, the original color and two neighbors of the complement color.



4278232787



4294590595



4278232144

Square

The Square scheme is like the rectangle color scheme, but the four colors are evenly spaced on the color wheel.



4294590595



4288580352



4278232980



4278226943

Rectangle

The Rectangle color scheme consists of four colors that form a rectangle on the color wheel.



4294590595



4292765723



4278232980



4278232051

Sweetspot

The Sweet Spot groups the original color and five complimentary colors.



4294590595



4294952923



4290134266



4286602858



4278190080



4286611584

Same Dimension

The Same Dimension uses a secret algorithm to generate beautiful new colors.



4294590595



4294909038



4294596928



4286410869



4290576452



4282187798

Inverse Universe

The Inverse Universe completely reimagines the original color for something new.



4294590595



4294909038



4282442234



4286410869



4290576452



4282187798

Previews

White Background



This preview shows how the Android color 4294590595 looks on a white background.

Color Contrast Check

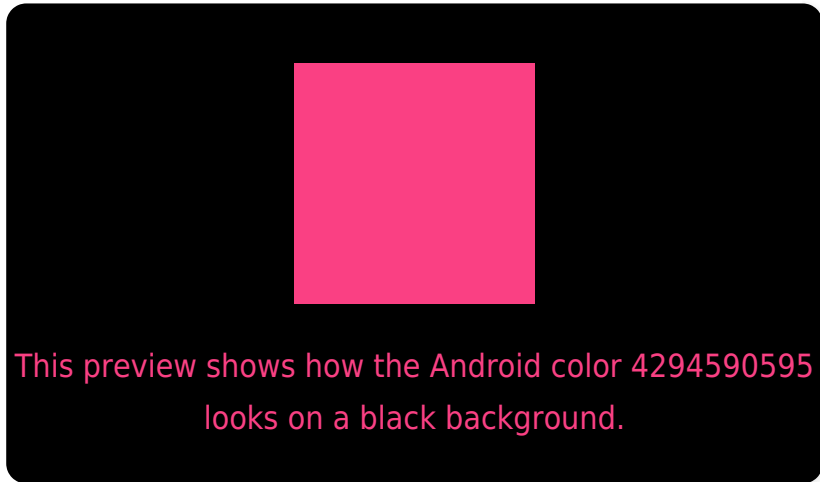
Large Text (above 18pt) WCAG AA ✓ Pass

Any Text WCAG AA ✗ Fail

Large Text (above 18pt) WCAG AAA ✗ Fail

Any Text WCAG AAA ✗ Fail

Black Background



Color Contrast Check

Large Text (above 18pt) WCAG AA ✓ Pass

Any Text WCAG AA ✓ Pass

Large Text (above 18pt) WCAG AAA ✓ Pass

Any Text WCAG AAA × Fail

If you want to check with other color combinations, try the [Color Contrast Checker](#).

Android 4294590595 Background



This preview shows how black text looks on a background with the Android color 4294590595.



This preview shows how white text looks on a background with the Android color 4294590595.

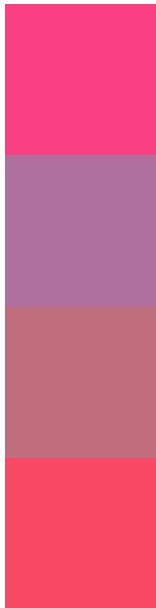
Color Blindness Simulation

Color vision deficiency is a very complex topic, and I could not describe the different causes any better than Wikipedia does, so if you want to learn more, you should check out their [article about color blindness](#).

Dichromacy



Trichromacy



Original Color
4294590595

Protanomaly
4289621918

Deuteranomaly
4290735485

Tritanomaly
4294461539

Monochromacy



Original Color
4294590595

Achromatopsia
4286545791

Achromatomaly
4289489024

CSS Examples

Text

The CSS property to change the color of the text to Android 4294590595 is called "color". The color property can be set on classes, ids or directly on the HTML element.

This example shows how text in the color `rgb(250, 64, 131)` looks like.

```
.text, #text, p{  
    color:rgb(250, 64, 131)  
}
```

If you want to add a text shadow in that color use the text-shadow property, you can generate a text shadow directly with our [CSS Text Shadow Generator](#).

Here you see how black text with a 4 pixel rgb(250, 64, 131) colored shadow looks like.

```
.shadow{ text-shadow: 4px 4px 2px rgb(250, 64, 131) }
```

Border

The CSS property to change the border of an element to Android 4294590595 is called "border". The border property can be set on classes, ids or directly on the HTML element.

This example shows the color as border, it can be applied via the CSS property "border" or "border-color".

```
.border, #border, table{ border:4px solid rgb(250, 64, 131) }
```

If only the border color should be changed use the property `border-color`.

```
.border{ border-color:rgb(250, 64, 131) }
```

If you want to add a box shadow in that color use:

Here you see how a box with a 4 pixel `rgb(250, 64, 131)` colored shadow looks like.

```
.boxshadow{ -moz-box-shadow:4px 4px 4px  
4px rgb(250, 64, 131); -webkit-box-  
shadow:4px 4px 4px 4px rgb(250, 64, 131);  
box-shadow:4px 4px 4px 4px rgb(250, 64,  
131) }
```

Background

The CSS property to change the background color of an element to Android 4294590595 is called "background". The background property can be set on classes, ids or directly on the HTML element.

```
.background, #background, body{  
background: rgb(250, 64, 131) }
```

If only the background color should be changed can be used:

```
.background{ background-color: rgb(250, 64,  
131) }
```

This example shows the color as background, it is applied via the CSS property "background".

To optimize and compress your CSS code, you can use our [online CSS compressor and optimizer](#) based on csstidy. If you want to create a linear or radial gradient as background or border, check our [CSS Gradient Generator](#).

Hey! You found this booklet interesting? Support Converting Colors with the new Membership Option!

The pro membership hides all ads, plus gives you double the colors in the color bucket, and more awesome pro features!

[Learn more, Memberships starting at \\$2.50/m!](#)

**Follow me
on Twitter!**

@ConvertingColor