

# Converting Colors

Android(4294600845)

Have a look what the booklet for  
Android(4294600845) contains.

<b>Android(4294600845)</b> .....	3
<i><b>Conversions</b></i> .....	4
<i><b>Details</b></i> .....	6
<i><b>Harmonies</b></i> .....	11
<i><b>Previews</b></i> .....	23
<i><b>Color Blindness Simulation</b></i> .....	26
<i><b>CSS Examples</b></i> .....	29

# **Color**

**Android(4294600845)**

# Conversions

## Conversions Part 1

Format	Color
Hex	FA688D
RGB	250, 104, 141
RGB Percent	98%, 41%, 55%
CMY	0.0196, 0.5922, 0.4471
CMYK	0.00, 0.58, 0.44, 0.02
HSL	345°, 94%, 69%
HSV	345°, 58%, 98%
XYZ	49.1824, 32.1477, 28.8122
YIQ	151.8720, 75.1390, 42.4590

# Conversions

## Conversions Part 2

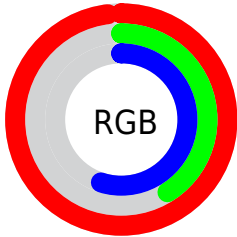
Format	Color
R <sub>Y</sub> B	250, 104, 141
Decimal	16410765
CIE Lab	63.46, 58.89, 8.61
CIE LCh	63, 59.520, 8.315
Yxy	32.1477, 0.4465, 0.2919
Android (android.graphics.Color)	4294600845 (0xFFFA688D)
YUV	151.8720, -5.3599, 86.0583
Hunter-Lab	56.6990, 55.6131, 9.5604

# Details

The Android color **4294600845** is a light color, and the websafe version is hex **FF6699**. A complement of this color would be **4285070037**, and the grayscale version is **4288190616**.

A 20% lighter version of the original color is **4294942914**, and **4290587995** is the 20% darker color. If you saturate the color by 10%, you get **4294594426**, and if you desaturate by 10%, it is **4294607264**.

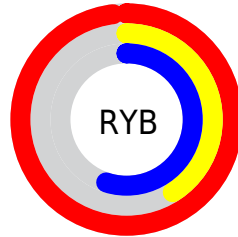
# Distribution



Red (98%)

Green (41%)

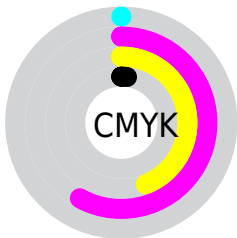
Blue (55%)



Red (98%)

Yellow (41%)

Blue (55%)

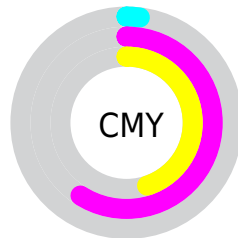


Cyan (0%)

Magenta (58%)

Yellow (44%)

Black (2%)



Cyan (2%)

Magenta (59%)

Yellow (45%)

# Brightness & Saturation Gradients

These gradients show how the Android color 4294600845 changes by changing the brightness by 10 percent. The first figure shows a shift by +10% for each color and the second figure -10%.

Similar to the brightness gradients but the following saturation gradients show a change of the Android color 4294600845 by changing the saturation by 10% instead.





4294600845



4294600845

4294967295



4292562036



4294942914



4290587995



4294950366



4288610372



4294957819



4286644270



4294965247



4284743706



4282974209



4281008129



4278190080



4294600845



4294600845

 4294594426

 4294607264

 4294588008

 4294613682

 4294581589

 4294620101

 4294575170

 4294626520

 4294574143

 4294632938

 4294639357

 4294639615

# Harmonies

## Analogous

The Analogous color harmony consists of three colors that are next to each other on the color wheel.



4293226690



4294600845



4294079579

# Triad

The Triadic color harmony groups three colors that are evenly spaced from another and form a triangle on the color wheel.



4294600845



4285507905



4278233852

# Complementary

The Complementary color scheme is a pair of colors which are on the opposite of each other on the color wheel.



4294600845



4285070037

# Split Complementary

Split-complementary colors differ from the complementary color scheme. The scheme consists of three colors, the original color and two neighbors of the complement color.



4278235610



4294600845



4278235504

# Square

The Square scheme is like the rectangle color scheme, but the four colors are evenly spaced on the color wheel.



4294600845



4289240101



4278236071



4282883071

# Rectangle

The Rectangle color scheme consists of four colors that form a rectangle on the color wheel.



4294600845



4292903487



4278236071



4278234611



# Sweetspot

The Sweet Spot groups the original color and five complimentary colors.



4294600845



4294955485



4292045050



4286604139



4278190080



4286611584



# Same Dimension

The Same Dimension uses a secret algorithm to generate beautiful new colors.



4294600845



4294921594



4294609512



4286410868



4290576432



4282187792



# Inverse Universe

The Inverse Universe completely reimagines the original color for something new.



4294600845



4294921594



4285061370



4286410868



4290576432



4282187792



# Previews

## White Background



This preview shows how the Android color 4294600845 looks on a white background.

## Color Contrast Check

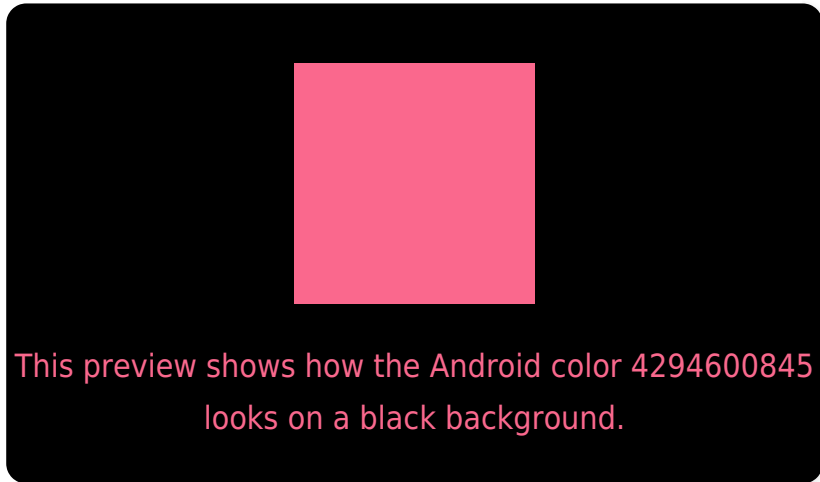
Large Text (above 18pt) WCAG AA × Fail

Any Text WCAG AA × Fail

Large Text (above 18pt) WCAG AAA × Fail

Any Text WCAG AAA × Fail

# Black Background



## Color Contrast Check

Large Text (above 18pt) WCAG AA ✓ Pass

Any Text WCAG AA ✓ Pass

Large Text (above 18pt) WCAG AAA ✓ Pass

Any Text WCAG AAA ✓ Pass

If you want to check with other color combinations, try the [Color Contrast Checker](#).



# Android 4294600845 Background



This preview shows how black text looks on a background with the Android color 4294600845.



This preview shows how white text looks on a background with the Android color 4294600845.

# Color Blindness Simulation

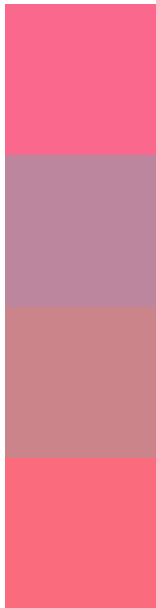
Color vision deficiency is a very complex topic, and I could not describe the different causes any better than Wikipedia does, so if you want to learn more, you should check out their [article about color blindness](#).

## Dichromacy





# Trichromacy



**Original Color**  
4294600845

**Protanomaly**  
4290545566

**Deuteranomaly**  
4291527817

**Tritanomaly**  
4294536061

# Monochromacy



**Original Color**  
4294600845

**Achromatopsia**  
4288190616

**Achromatomaly**  
4290545556

# CSS Examples

## Text

The CSS property to change the color of the text to Android 4294600845 is called "color". The color property can be set on classes, ids or directly on the HTML element.

This example shows how text in the color `rgb(250, 104, 141)` looks like.

```
.text, #text, p{  
    color:rgb(250, 104, 141)  
}
```

If you want to add a text shadow in that color use the text-shadow property, you can generate a text shadow directly with our [CSS Text Shadow Generator](#).

Here you see how black text with a 4 pixel rgb(250, 104, 141) colored shadow looks like.

```
.shadow{ text-shadow: 4px 4px 2px rgb(250, 104, 141) }
```

## Border

The CSS property to change the border of an element to Android 4294600845 is called "border". The border property can be set on classes, ids or directly on the HTML element.

This example shows the color as border, it can be applied via the CSS property "border" or "border-color".

```
.border, #border, table{ border:4px solid rgb(250, 104, 141) }
```

If only the border color should be changed use the property `border-color`.

```
.border{ border-color:rgb(250, 104, 141) }
```

If you want to add a box shadow in that color use:

Here you see how a box with a 4 pixel `rgb(250, 104, 141)` colored shadow looks like.

```
.boxshadow{ -moz-box-shadow:4px 4px 4px  
4px rgb(250, 104, 141); -webkit-box-  
shadow:4px 4px 4px 4px rgb(250, 104, 141);  
box-shadow:4px 4px 4px 4px rgb(250, 104,  
141) }
```

# Background

The CSS property to change the background color of an element to Android 4294600845 is called "background". The background property can be set on classes, ids or directly on the HTML element.

```
.background, #background, body{  
background: rgb(250, 104, 141) }
```

If only the background color should be changed can be used:

```
.background{ background-color: rgb(250,  
104, 141) }
```

This example shows the color as background, it is applied via the CSS property "background".

To optimize and compress your CSS code, you can use our [online CSS compressor and optimizer](#) based on csstidy. If you want to create a linear or radial gradient as background or border, check our [CSS Gradient Generator](#).



Hey! You found this booklet interesting? Support Converting Colors with the new Membership Option!

The pro membership hides all ads, plus gives you double the colors in the color bucket, and more awesome pro features!

**[Learn more, Memberships starting at \\$2.50/m!](#)**

**Follow me  
on Twitter!**

@ConvertingColor