

Converting Colors

Android(4294615682)

Have a look what the booklet for
Android(4294615682) contains.

Android(4294615682)	3
<i>Conversions</i>	4
<i>Details</i>	6
<i>Harmonies</i>	11
<i>Previews</i>	23
<i>Color Blindness Simulation</i>	26
<i>CSS Examples</i>	29

Color

Android(4294615682)

Conversions

Conversions Part 1

Format	Color
Hex	FAA282
RGB	250, 162, 130
RGB Percent	98%, 64%, 51%
CMY	0.0196, 0.3647, 0.4902
CMYK	0.00, 0.35, 0.48, 0.02
HSL	16°, 92%, 75%
HSV	16°, 48%, 98%
XYZ	56.3739, 47.7764, 27.3696
YIQ	184.6640, 62.7200, 8.7040

Conversions

Conversions Part 2

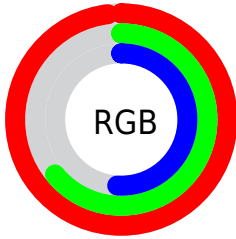
Format	Color
R _Y B	250, 174, 130
Decimal	16425602
CIE Lab	74.68, 29.22, 30.13
CIE LCh	75, 41.971, 45.879
Yxy	47.7764, 0.4286, 0.3633
Android (android.graphics.Color)	4294615682 (0xFFFAA282)
YUV	184.6640, -26.9494, 57.2997
Hunter-Lab	69.1204, 24.6220, 24.9073

Details

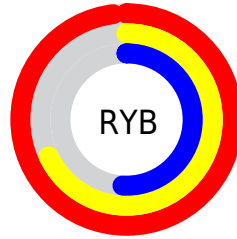
The Android color **4294615682** is a light color, and the websafe version is hex **FF9966**. A complement of this color would be **4286765818**, and the grayscale version is **4290361785**.

A 20% lighter version of the original color is **4294957495**, and **4290670160** is the 20% darker color. If you saturate the color by 10%, you get **4294611049**, and if you desaturate by 10%, it is **4294620315**.

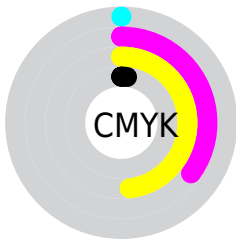
Distribution



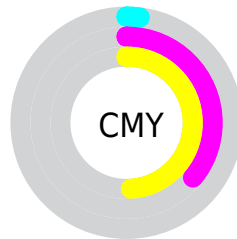
- Red (98%)
- Green (64%)
- Blue (51%)



- Red (98%)
- Yellow (68%)
- Blue (51%)



- Cyan (0%)
- Magenta (35%)
- Yellow (48%)
- Black (2%)



- Cyan (2%)
- Magenta (36%)
- Yellow (49%)

Brightness & Saturation Gradients

These gradients show how the Android color 4294615682 changes by changing the brightness by 10 percent. The first figure shows a shift by +10% for each color and the second figure -10%.

Similar to the brightness gradients but the following saturation gradients show a change of the Android color 4294615682 by changing the saturation by 10% instead.

 4294615682

 4294615682

4294967295

 4292642665

 4294957495

 4290670160

 4294964947

 4288762937

 4294967279

 4286921763

 4285080845

 4283304960

 4281532416

 4279238656

 4278190080

 4294615682

 4294615682

 4294611049

 4294620315

 4294606160

 4294625204

 4294601527

 4294629837

 4294596894

 4294634470

 4294592005

 4294639359

 4294591232

 4294639615

Harmonies

Analogous

The Analogous color harmony consists of three colors that are next to each other on the color wheel.



4294941349



4294615682



4292980589

Triad

The Triadic color harmony groups three colors that are evenly spaced from another and form a triangle on the color wheel.



4294615682



4284402596



4288787967

Complementary

The Complementary color scheme is a pair of colors which are on the opposite of each other on the color wheel.



4294615682



4286765818

Split Complementary

Split-complementary colors differ from the complementary color scheme. The scheme consists of three colors, the original color and two neighbors of the complement color.



4284203519



4294615682



4279422156

Square

The Square scheme is like the rectangle color scheme, but the four colors are evenly spaced on the color wheel.



4294615682



4287743617



4278241774



4292257518

Rectangle

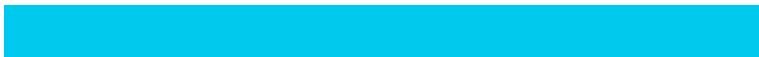
The Rectangle color scheme consists of four colors that form a rectangle on the color wheel.



4294615682



4291410026



4278241774



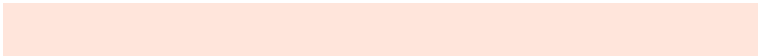
4287347199

Sweetspot

The Sweet Spot groups the original color and five complimentary colors.



4294615682



4294960603



4294607578



4286607466



4278190080



4286611584

Same Dimension

The Same Dimension uses a secret algorithm to generate beautiful new colors.



4294615682



4294939499



4294631042



4286411888



4290589184



4282191872

Inverse Universe

The Inverse Universe completely reimagines the original color for something new.



4286765818



4285257983



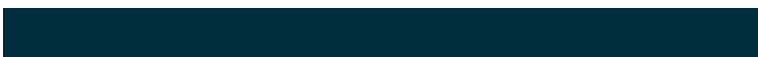
4286750458



4285561469



4278225597



4278201661

Previews

White Background



This preview shows how the Android color 4294615682 looks on a white background.

Color Contrast Check

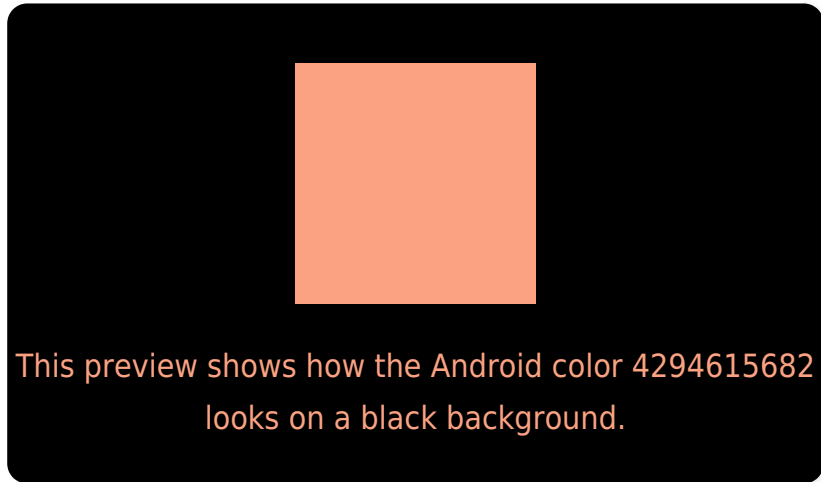
Large Text (above 18pt) WCAG AA × Fail

Any Text WCAG AA × Fail

Large Text (above 18pt) WCAG AAA × Fail

Any Text WCAG AAA × Fail

Black Background



Color Contrast Check

Large Text (above 18pt) WCAG AA ✓ Pass

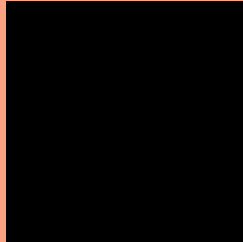
Any Text WCAG AA ✓ Pass

Large Text (above 18pt) WCAG AAA ✓ Pass

Any Text WCAG AAA ✓ Pass

If you want to check with other color combinations, try the [Color Contrast Checker](#).

Android 4294615682 Background



This preview shows how black text looks on a background with the Android color 4294615682.



This preview shows how white text looks on a background with the Android color 4294615682.

Color Blindness Simulation

Color vision deficiency is a very complex topic, and I could not describe the different causes any better than Wikipedia does, so if you want to learn more, you should check out their [article about color blindness](#).

Dichromacy



Original Color
4294615682

Protanopia
4291147916

Deuteranopia
4292653183



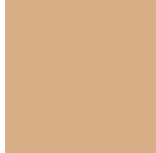
Tritanopia
4294811048

Trichromacy



Original Color

4294615682



Protanomaly

4292391048



Deuteranomaly

4293372800



Tritanomaly

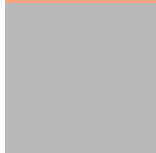
4294746010

Monochromacy



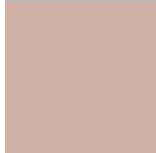
Original Color

4294615682



Achromatopsia

4290361785



Achromatomaly

4291932581

CSS Examples

Text

The CSS property to change the color of the text to Android 4294615682 is called "color". The color property can be set on classes, ids or directly on the HTML element.

This example shows how text in the color `rgb(250, 162, 130)` looks like.

```
.text, #text, p{  
    color:rgb(250, 162, 130)  
}
```

If you want to add a text shadow in that color use the text-shadow property, you can generate a text shadow directly with our [CSS Text Shadow Generator](#).

Here you see how black text with a 4 pixel rgb(250, 162, 130) colored shadow looks like.

```
.shadow{ text-shadow: 4px 4px 2px rgb(250, 162, 130) }
```

Border

The CSS property to change the border of an element to Android 4294615682 is called "border". The border property can be set on classes, ids or directly on the HTML element.

This example shows the color as border, it can be applied via the CSS property "border" or "border-color".

```
.border, #border, table{ border:4px solid rgb(250, 162, 130) }
```

If only the border color should be changed use the property `border-color`.

```
.border{ border-color:rgb(250, 162, 130) }
```

If you want to add a box shadow in that color use:

Here you see how a box with a 4 pixel `rgb(250, 162, 130)` colored shadow looks like.

```
.boxshadow{ -moz-box-shadow:4px 4px 4px  
4px rgb(250, 162, 130); -webkit-box-  
shadow:4px 4px 4px 4px rgb(250, 162, 130);  
box-shadow:4px 4px 4px 4px rgb(250, 162,  
130) }
```

Background

The CSS property to change the background color of an element to Android 4294615682 is called "background". The background property can be set on classes, ids or directly on the HTML element.

```
.background, #background, body{  
background: rgb(250, 162, 130) }
```

If only the background color should be changed can be used:

```
.background{ background-color: rgb(250,  
162, 130) }
```

This example shows the color as background, it is applied via the CSS property "background".

To optimize and compress your CSS code, you can use our [online CSS compressor and optimizer](#) based on csstidy. If you want to create a linear or radial gradient as background or border, check our [CSS Gradient Generator](#).

Hey! You found this booklet interesting? Support Converting Colors with the new Membership Option!

The pro membership hides all ads, plus gives you double the colors in the color bucket, and more awesome pro features!

[Learn more, Memberships starting at \\$2.50/m!](#)

**Follow me
on Twitter!**

@ConvertingColor