

Converting Colors

Android(4294657901)

Have a look what the booklet for
Android(4294657901) contains.

Android(4294657901)	3
<i>Conversions</i>	4
<i>Details</i>	6
<i>Harmonies</i>	11
<i>Previews</i>	23
<i>Color Blindness Simulation</i>	26
<i>CSS Examples</i>	29

Color

Android(4294657901)

Conversions

Conversions Part 1

Format	Color
Hex	FB476D
RGB	251, 71, 109
RGB Percent	98%, 28%, 43%
CMY	0.0157, 0.7216, 0.5725
CMYK	0.00, 0.72, 0.57, 0.02
HSL	347°, 96%, 63%
HSV	347°, 72%, 98%
XYZ	44.7972, 26.1198, 17.1486
YIQ	129.1520, 95.0820, 49.9780

Conversions

Conversions Part 2

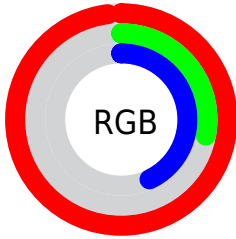
Format	Color
R_{YB}	251, 71, 109
Decimal	16467821
CIE _{Lab}	58.15, 69.50, 19.84
CIE _{LCh}	58, 72.273, 15.932
Yxy	26.1198, 0.5087, 0.2966
Android (android.graphics.Color)	4294657901 (0xFFFB476D)
YUV	129.1520, -9.9349, 106.8607
Hunter-Lab	51.1076, 67.0220, 15.8812

Details

The Android color **4294657901** is a dark color, and the websafe version is hex **FF3366**. The color can be described as middle washed rose. A complement of this color would be **4282907605**, and the grayscale version is **4286677377**.

A 20% lighter version of the original color is **4294935456**, and **4290510910** is the 20% darker color. If you saturate the color by 10%, you get **4294651481**, and if you desaturate by 10%, it is **4294664321**.

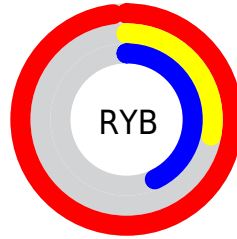
Distribution



Red (98%)

Green (28%)

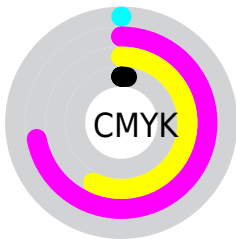
Blue (43%)



Red (98%)

Yellow (28%)

Blue (43%)

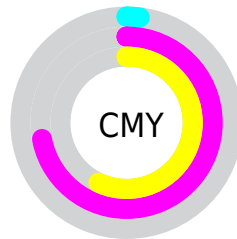


Cyan (0%)

Magenta (72%)

Yellow (57%)

Black (2%)



Cyan (2%)

Magenta (72%)

Yellow (57%)

Brightness & Saturation Gradients

These gradients show how the Android color 4294657901 changes by changing the brightness by 10 percent. The first figure shows a shift by +10% for each color and the second figure -10%.

Similar to the brightness gradients but the following saturation gradients show a change of the Android color 4294657901 by changing the saturation by 10% instead.



4294657901



4294657901

4294967295



4292551253



4294935456



4290510910



4294943163



4288479273



4294950615



4286447637



4294958323



4284416001



4294966015



4282515459



4280287233



4278190080



4294657901



4294657901

 4294651481

 4294664321

 4294645061

 4294670741

 4294639669

 4294677160

 4294683580

 4294690000

 4294696676

 4294703096

 4294705151

Harmonies

Analogous

The Analogous color harmony consists of three colors that are next to each other on the color wheel.



4293741484



4294657901



4293484849

Triad

The Triadic color harmony groups three colors that are evenly spaced from another and form a triangle on the color wheel.



4294657901



4281901097



4278230271

Complementary

The Complementary color scheme is a pair of colors which are on the opposite of each other on the color wheel.



4294657901



4282907605

Split Complementary

Split-complementary colors differ from the complementary color scheme. The scheme consists of three colors, the original color and two neighbors of the complement color.



4278232806



4294657901



4278232683

Square

The Square scheme is like the rectangle color scheme, but the four colors are evenly spaced on the color wheel.



4294657901



4287206144



4278233261



4281960703

Rectangle

The Rectangle color scheme consists of four colors that form a rectangle on the color wheel.



4294657901



4291851520



4278233261



4278231295

Sweetspot

The Sweet Spot groups the original color and five complimentary colors.



4294657901



4294952915



4292102139



4286602853



4278190080



4286611584

Same Dimension

The Same Dimension uses a secret algorithm to generate beautiful new colors.



4294657901



4294911058



4294670919



4286410867



4290576424



4282187789

Inverse Universe

The Inverse Universe completely reimagines the original color for something new.



4294657901



4294911058



4282894587



4286410867



4290576424



4282187789

Previews

White Background



This preview shows how the Android color 4294657901 looks on a white background.

Color Contrast Check

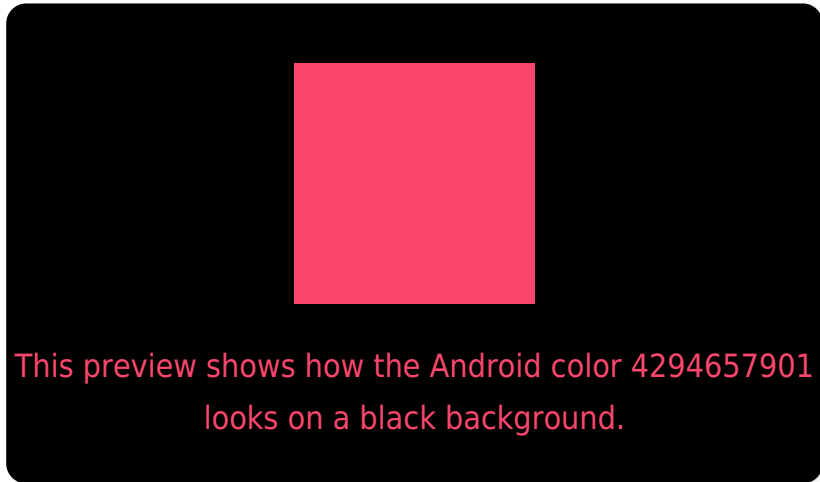
Large Text (above 18pt) WCAG AA ✓ Pass

Any Text WCAG AA ✗ Fail

Large Text (above 18pt) WCAG AAA ✗ Fail

Any Text WCAG AAA ✗ Fail

Black Background



Color Contrast Check

Large Text (above 18pt) WCAG AA ✓ Pass

Any Text WCAG AA ✓ Pass

Large Text (above 18pt) WCAG AAA ✓ Pass

Any Text WCAG AAA × Fail

If you want to check with other color combinations, try the [Color Contrast Checker](#).

Android 4294657901 Background



This preview shows how black text looks on a background with the Android color 4294657901.

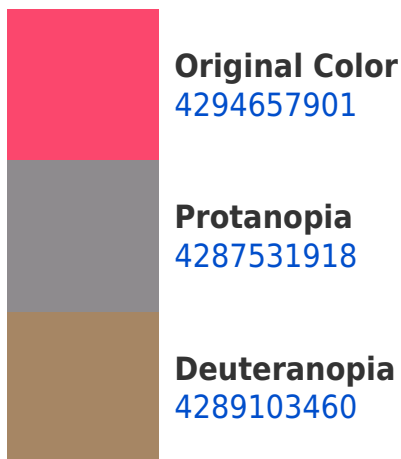


This preview shows how white text looks on a background with the Android color 4294657901.

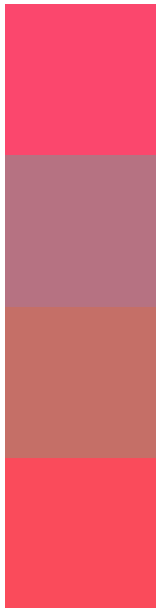
Color Blindness Simulation

Color vision deficiency is a very complex topic, and I could not describe the different causes any better than Wikipedia does, so if you want to learn more, you should check out their [article about color blindness](#).

Dichromacy



Trichromacy



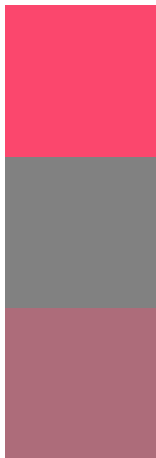
Original Color
4294657901

Protanomaly
4290146946

Deuteranomaly
4291129191

Tritanomaly
4294593371

Monochromacy



Original Color
4294657901

Achromatopsia
4286677377

Achromatomaly
4289555578

CSS Examples

Text

The CSS property to change the color of the text to Android 4294657901 is called "color". The color property can be set on classes, ids or directly on the HTML element.

This example shows how text in the color `rgb(251, 71, 109)` looks like.

```
.text, #text, p{  
    color:rgb(251, 71, 109)  
}
```

If you want to add a text shadow in that color use the text-shadow property, you can generate a text shadow directly with our [CSS Text Shadow Generator](#).

Here you see how black text with a 4 pixel rgb(251, 71, 109) colored shadow looks like.

```
.shadow{ text-shadow: 4px 4px 2px rgb(251, 71, 109) }
```

Border

The CSS property to change the border of an element to Android 4294657901 is called "border". The border property can be set on classes, ids or directly on the HTML element.

This example shows the color as border, it can be applied via the CSS property "border" or "border-color".

```
.border, #border, table{ border:4px solid rgb(251, 71, 109) }
```

If only the border color should be changed use the property `border-color`.

```
.border{ border-color:rgb(251, 71, 109) }
```

If you want to add a box shadow in that color use:

Here you see how a box with a 4 pixel `rgb(251, 71, 109)` colored shadow looks like.

```
.boxshadow{ -moz-box-shadow:4px 4px 4px  
4px rgb(251, 71, 109); -webkit-box-  
shadow:4px 4px 4px 4px rgb(251, 71, 109);  
box-shadow:4px 4px 4px 4px rgb(251, 71,  
109) }
```

Background

The CSS property to change the background color of an element to Android 4294657901 is called "background". The background property can be set on classes, ids or directly on the HTML element.

```
.background, #background, body{  
background: rgb(251, 71, 109) }
```

If only the background color should be changed can be used:

```
.background{ background-color: rgb(251, 71,  
109) }
```

This example shows the color as background, it is applied via the CSS property "background".

To optimize and compress your CSS code, you can use our [online CSS compressor and optimizer](#) based on csstidy. If you want to create a linear or radial gradient as background or border, check our [CSS Gradient Generator](#).

Hey! You found this booklet interesting? Support Converting Colors with the new Membership Option!

The pro membership hides all ads, plus gives you double the colors in the color bucket, and more awesome pro features!

[Learn more, Memberships starting at \\$2.50/m!](#)

**Follow me
on Twitter!**

@ConvertingColor