

Converting Colors

Android(4294664319)

Have a look what the booklet for
Android(4294664319) contains.

Android(4294664319)	3
<i>Conversions</i>	4
<i>Details</i>	6
<i>Harmonies</i>	11
<i>Previews</i>	23
<i>Color Blindness Simulation</i>	26
<i>CSS Examples</i>	29

Color

Android(4294664319)

Conversions

Conversions Part 1

Format	Color
Hex	FB607F
RGB	251, 96, 127
RGB Percent	98%, 38%, 50%
CMY	0.0157, 0.6235, 0.5020
CMYK	0.00, 0.62, 0.49, 0.02
HSL	348°, 95%, 68%
HSV	348°, 62%, 98%
XYZ	47.7973, 30.4073, 23.4287
YIQ	145.8790, 82.4290, 42.5010

Conversions

Conversions Part 2

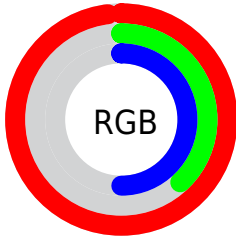
Format	Color
R _Y B	251, 96, 127
Decimal	16474239
CIE Lab	62.00, 61.39, 14.64
CIE LCh	62, 63.109, 13.417
Yxy	30.4073, 0.4703, 0.2992
Android (android.graphics.Color)	4294664319 (0xFFFB607F)
YUV	145.8790, -9.3073, 92.1911
Hunter-Lab	55.1428, 58.2224, 13.4093

Details

The Android color **4294664319** is a light color, and the websafe version is hex **FF6699**, and the color name is **brink pink**. A complement of this color would be **4284546012**, and the grayscale version is **4287795858**.

A 20% lighter version of the original color is **4294941108**, and **4290584910** is the 20% darker color. If you saturate the color by 10%, you get **4294657899**, and if you desaturate by 10%, it is **4294670739**.

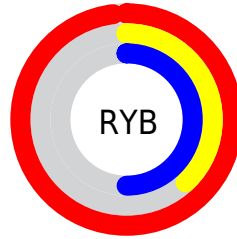
Distribution



Red (98%)

Green (38%)

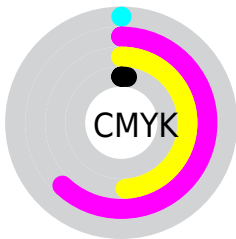
Blue (50%)



Red (98%)

Yellow (38%)

Blue (50%)

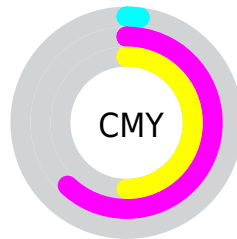


Cyan (0%)

Magenta (62%)

Yellow (49%)

Black (2%)



Cyan (2%)

Magenta (62%)


Yellow (50%)

Brightness & Saturation Gradients

These gradients show how the Android color 4294664319 changes by changing the brightness by 10 percent. The first figure shows a shift by +10% for each color and the second figure -10%.

Similar to the brightness gradients but the following saturation gradients show a change of the Android color 4294664319 by changing the saturation by 10% instead.

 4294664319

 4294664319

4294967295

 4292625254

 4294941108

 4290584910

 4294948303

 4288610360

 4294956011

 4286644259

 4294963455

 4284678157

 4282843138

 4280811521

 4278190080

 4294664319

 4294664319

 4294657899

 4294670739

 4294651479

 4294677159

 4294645059

 4294683579

 4294639666

 4294689999

 4294696419

 4294703095

 4294705151

Harmonies

Analogous

The Analogous color harmony consists of three colors that are next to each other on the color wheel.



4293617079



4294664319



4293816651

Triad

The Triadic color harmony groups three colors that are evenly spaced from another and form a triangle on the color wheel.



4294664319



4284196926



4278232575

Complementary

The Complementary color scheme is a pair of colors which are on the opposite of each other on the color wheel.



4294664319



4284546012

Split Complementary

Split-complementary colors differ from the complementary color scheme. The scheme consists of three colors, the original color and two neighbors of the complement color.



4278234850



4294664319



4278234740

Square

The Square scheme is like the rectangle color scheme, but the four colors are evenly spaced on the color wheel.



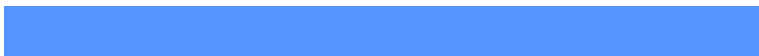
4294664319



4288387862



4278235310



4283667711

Rectangle

The Rectangle color scheme consists of four colors that form a rectangle on the color wheel.



4294664319



4292444206



4278235310



4278233593

Sweetspot

The Sweet Spot groups the original color and five complimentary colors.



4294664319



4294954968



4292632827



4286603880



4278190080



4286611584

Same Dimension

The Same Dimension uses a secret algorithm to generate beautiful new colors.



4294664319



4294918760



4294676064



4286410867



4290576422



4282187788

Inverse Universe

The Inverse Universe completely reimagines the original color for something new.



4294664319



4294918760



4284534011



4286410867



4290576422



4282187788

Previews

White Background



This preview shows how the Android color 4294664319 looks on a white background.

Color Contrast Check

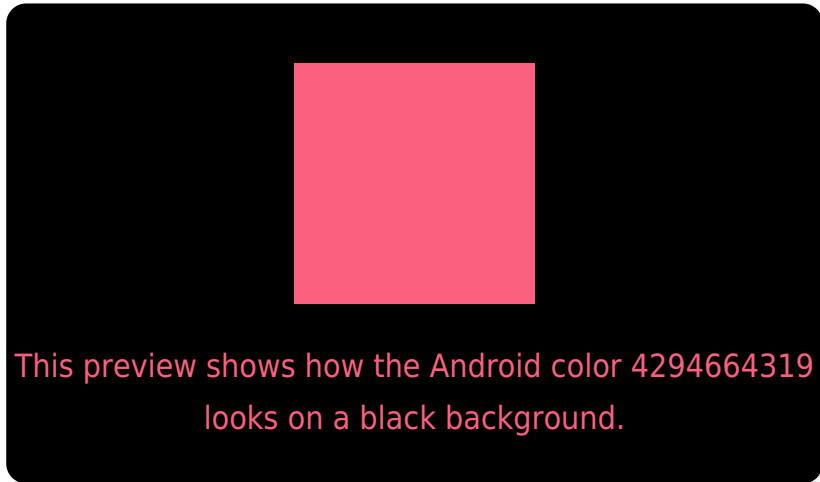
Large Text (above 18pt) WCAG AA × Fail

Any Text WCAG AA × Fail

Large Text (above 18pt) WCAG AAA × Fail

Any Text WCAG AAA × Fail

Black Background



Color Contrast Check

Large Text (above 18pt) WCAG AA ✓ Pass

Any Text WCAG AA ✓ Pass

Large Text (above 18pt) WCAG AAA ✓ Pass

Any Text WCAG AAA ✓ Pass

If you want to check with other color combinations, try the [Color Contrast Checker](#).

Android 4294664319 Background



This preview shows how black text looks on a background with the Android color 4294664319.



This preview shows how white text looks on a background with the Android color 4294664319.

Color Blindness Simulation

Color vision deficiency is a very complex topic, and I could not describe the different causes any better than Wikipedia does, so if you want to learn more, you should check out their [article about color blindness](#).

Dichromacy

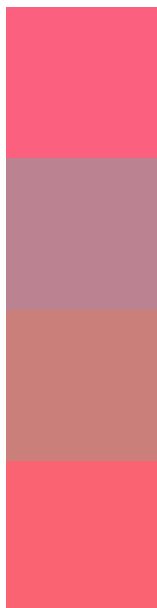


Original Color
4294664319

Protanopia
4288124315

Deuteranopia
4289695864

Trichromacy



Original Color

4294664319

Protanomaly

4290478737

Deuteranomaly

4291526523

Tritanomaly

4294599538

Monochromacy



Original Color

4294664319

Achromatopsia

4287795858

Achromatomaly

4290281611

CSS Examples

Text

The CSS property to change the color of the text to Android 4294664319 is called "color". The color property can be set on classes, ids or directly on the HTML element.

This example shows how text in the color `rgb(251, 96, 127)` looks like.

```
.text, #text, p{  
    color:rgb(251, 96, 127)  
}
```

If you want to add a text shadow in that color use the text-shadow property, you can generate a text shadow directly with our [CSS Text Shadow Generator](#).

Here you see how black text with a 4 pixel rgb(251, 96, 127) colored shadow looks like.

```
.shadow{ text-shadow: 4px 4px 2px rgb(251, 96, 127) }
```

Border

The CSS property to change the border of an element to Android 4294664319 is called "border". The border property can be set on classes, ids or directly on the HTML element.

This example shows the color as border, it can be applied via the CSS property "border" or "border-color".

```
.border, #border, table{ border:4px solid rgb(251, 96, 127) }
```

If only the border color should be changed use the property `border-color`.

```
.border{ border-color:rgb(251, 96, 127) }
```

If you want to add a box shadow in that color use:

Here you see how a box with a 4 pixel `rgb(251, 96, 127)` colored shadow looks like.

```
.boxshadow{ -moz-box-shadow:4px 4px 4px  
4px rgb(251, 96, 127); -webkit-box-  
shadow:4px 4px 4px 4px rgb(251, 96, 127);  
box-shadow:4px 4px 4px 4px rgb(251, 96,  
127) }
```

Background

The CSS property to change the background color of an element to Android 4294664319 is called "background". The background property can be set on classes, ids or directly on the HTML element.

```
.background, #background, body{  
background: rgb(251, 96, 127) }
```

If only the background color should be changed can be used:

```
.background{ background-color: rgb(251, 96,  
127) }
```

This example shows the color as background, it is applied via the CSS property "background".

To optimize and compress your CSS code, you can use our [online CSS compressor and optimizer](#) based on csstidy. If you want to create a linear or radial gradient as background or border, check our [CSS Gradient Generator](#).

Hey! You found this booklet interesting? Support Converting Colors with the new Membership Option!

The pro membership hides all ads, plus gives you double the colors in the color bucket, and more awesome pro features!

[Learn more, Memberships starting at \\$2.50/m!](#)

**Follow me
on Twitter!**

@ConvertingColor