

Converting Colors

Android(4294665084)

Have a look what the booklet for
Android(4294665084) contains.

Android(4294665084)	3
<i>Conversions</i>	4
<i>Details</i>	6
<i>Harmonies</i>	11
<i>Previews</i>	23
<i>Color Blindness Simulation</i>	26
<i>CSS Examples</i>	29

Color

Android(4294665084)

Conversions

Conversions Part 1

Format	Color
Hex	FB637C
RGB	251, 99, 124
RGB Percent	98%, 39%, 49%
CMY	0.0157, 0.6118, 0.5137
CMYK	0.00, 0.61, 0.51, 0.02
HSL	350°, 95%, 69%
HSV	350°, 61%, 98%
XYZ	47.8836, 30.8881, 22.5070
YIQ	147.2980, 82.5670, 39.9990

Conversions

Conversions Part 2

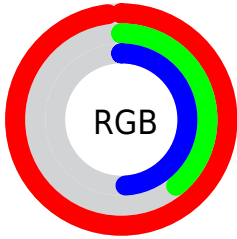
Format	Color
R _Y B	251, 99, 124
Decimal	16475004
CIE Lab	62.41, 59.86, 16.94
CIE LCh	62, 62.214, 15.801
Yxy	30.8881, 0.4728, 0.3050
Android (android.graphics.Color)	4294665084 (0xFFFB637C)
YUV	147.2980, -11.4859, 90.9467
Hunter-Lab	55.5771, 56.5304, 14.8933

Details

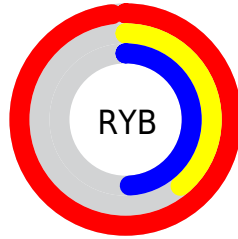
The Android color `4294665084` is a light color, and the websafe version is hex `FF6666`. A complement of this color would be `4284742626`, and the grayscale version is `4287861651`.

A 20% lighter version of the original color is `4294941616`, and `4290586444` is the 20% darker color. If you saturate the color by 10%, you get `4294658663`, and if you desaturate by 10%, it is `4294671505`.

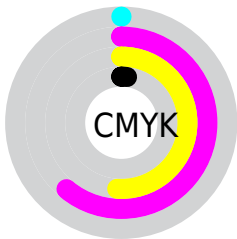
Distribution



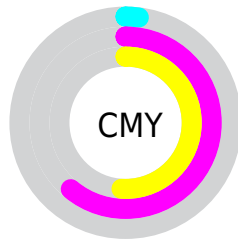
- Red (98%)
- Green (39%)
- Blue (49%)



- Red (98%)
- Yellow (39%)
- Blue (49%)



- Cyan (0%)
- Magenta (61%)
- Yellow (51%)
- Black (2%)



- Cyan (2%)
- Magenta (61%)
- Yellow (51%)

Brightness & Saturation Gradients

These gradients show how the Android color 4294665084 changes by changing the brightness by 10 percent. The first figure shows a shift by +10% for each color and the second figure -10%.

Similar to the brightness gradients but the following saturation gradients show a change of the Android color 4294665084 by changing the saturation by 10% instead.



4294665084



4294665084

4294967295



4292626019



4294941616



4290586444



4294949068



4288610357



4294956520



4286644256



4294964223



4284678153



4282843138



4280811521



4278190080



4294665084



4294665084

■ 4294658663

■ 4294671505

■ 4294652242

■ 4294677926

■ 4294645821

■ 4294684347

■ 4294639657

■ 4294690768

■ 4294697445

■ 4294703866

■ 4294705151

Harmonies

Analogous

The Analogous color harmony consists of three colors that are next to each other on the color wheel.



4293813940



4294665084



4293686345

Triad

The Triadic color harmony groups three colors that are evenly spaced from another and form a triangle on the color wheel.



4294665084



4283935045



4278232575

Complementary

The Complementary color scheme is a pair of colors which are on the opposite of each other on the color wheel.



4294665084



4284742626

Split Complementary

Split-complementary colors differ from the complementary color scheme. The scheme consists of three colors, the original color and two neighbors of the complement color.



4278234853



4294665084



4278235002

Square

The Square scheme is like the rectangle color scheme, but the four colors are evenly spaced on the color wheel.



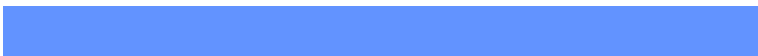
4294665084



4288126237



4278235571



4284650495

Rectangle

The Rectangle color scheme consists of four colors that form a rectangle on the color wheel.



4294665084



4292248366



4278235571



4278233595

Sweetspot

The Sweet Spot groups the original color and five complimentary colors.



4294665084



4294955481



4293026811



4286604136



4278190080



4286611584

Same Dimension

The Same Dimension uses a secret algorithm to generate beautiful new colors.



4294665084



4294919523



4294678115



4286410867



4290576415



4282187786

Inverse Universe

The Inverse Universe completely reimagines the original color for something new.



4294665084



4294919523



4284729595



4286410867



4290576415



4282187786

Previews

White Background



This preview shows how the Android color 4294665084 looks on a white background.

Color Contrast Check

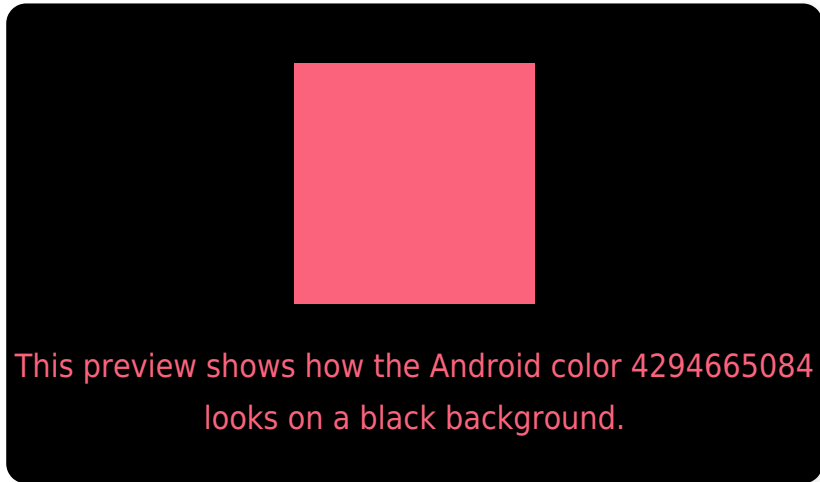
Large Text (above 18pt) WCAG AA × Fail

Any Text WCAG AA × Fail

Large Text (above 18pt) WCAG AAA × Fail

Any Text WCAG AAA × Fail

Black Background



Color Contrast Check

Large Text (above 18pt) WCAG AA ✓ Pass

Any Text WCAG AA ✓ Pass

Large Text (above 18pt) WCAG AAA ✓ Pass

Any Text WCAG AAA ✓ Pass

If you want to check with other color combinations, try the [Color Contrast Checker](#).

Android 4294665084 Background



This preview shows how black text looks on a background with the Android color 4294665084.

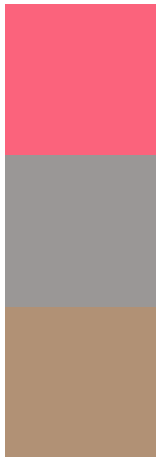


This preview shows how white text looks on a background with the Android color 4294665084.

Color Blindness Simulation

Color vision deficiency is a very complex topic, and I could not describe the different causes any better than Wikipedia does, so if you want to learn more, you should check out their [article about color blindness](#).

Dichromacy

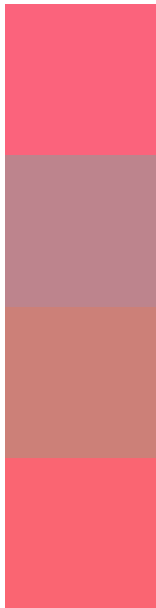


Original Color
4294665084

Protanopia
4288321430

Deuteranopia
4289827189

Trichromacy



Original Color
4294665084

Protanomaly
4290610317

Deuteranomaly
4291592312

Tritanomaly
4294600050

Monochromacy



Original Color
4294665084

Achromatopsia
4287861651

Achromatomaly
4290347659

CSS Examples

Text

The CSS property to change the color of the text to Android 4294665084 is called "color". The color property can be set on classes, ids or directly on the HTML element.

This example shows how text in the color `rgb(251, 99, 124)` looks like.

```
.text, #text, p{  
    color:rgb(251, 99, 124)  
}
```

If you want to add a text shadow in that color use the text-shadow property, you can generate a text shadow directly with our [CSS Text Shadow Generator](#).

Here you see how black text with a 4 pixel rgb(251, 99, 124) colored shadow looks like.

```
.shadow{ text-shadow: 4px 4px 2px rgb(251, 99, 124) }
```

Border

The CSS property to change the border of an element to Android 4294665084 is called "border". The border property can be set on classes, ids or directly on the HTML element.

This example shows the color as border, it can be applied via the CSS property "border" or "border-color".

```
.border, #border, table{ border:4px solid rgb(251, 99, 124) }
```

If only the border color should be changed use the property `border-color`.

```
.border{ border-color:rgb(251, 99, 124) }
```

If you want to add a box shadow in that color use:

Here you see how a box with a 4 pixel `rgb(251, 99, 124)` colored shadow looks like.

```
.boxshadow{ -moz-box-shadow:4px 4px 4px  
4px rgb(251, 99, 124); -webkit-box-  
shadow:4px 4px 4px 4px rgb(251, 99, 124);  
box-shadow:4px 4px 4px 4px rgb(251, 99,  
124) }
```

Background

The CSS property to change the background color of an element to Android 4294665084 is called "background". The background property can be set on classes, ids or directly on the HTML element.

```
.background, #background, body{  
background: rgb(251, 99, 124) }
```

If only the background color should be changed can be used:

```
.background{ background-color: rgb(251, 99,  
124) }
```

This example shows the color as background, it is applied via the CSS property "background".

To optimize and compress your CSS code, you can use our [online CSS compressor and optimizer](#) based on csstidy. If you want to create a linear or radial gradient as background or border, check our [CSS Gradient Generator](#).

Hey! You found this booklet interesting? Support Converting Colors with the new Membership Option!

The pro membership hides all ads, plus gives you double the colors in the color bucket, and more awesome pro features!

[Learn more, Memberships starting at \\$2.50/m!](#)

**Follow me
on Twitter!**

@ConvertingColor