

Converting Colors

Android(4294665872)

Have a look what the booklet for
Android(4294665872) contains.

Android(4294665872)	3
<i>Conversions</i>	4
<i>Details</i>	6
<i>Harmonies</i>	11
<i>Previews</i>	23
<i>Color Blindness Simulation</i>	26
<i>CSS Examples</i>	29

Color

Android(4294665872)

Conversions

Conversions Part 1

Format	Color
Hex	FB6690
RGB	251, 102, 144
RGB Percent	98%, 40%, 56%
CMY	0.0157, 0.6000, 0.4353
CMYK	0.00, 0.59, 0.43, 0.02
HSL	343°, 95%, 69%
HSV	343°, 59%, 98%
XYZ	49.5691, 32.0256, 29.9545
YIQ	151.3390, 75.3220, 44.6500

Conversions

Conversions Part 2

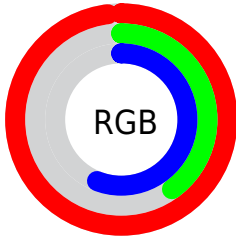
Format	Color
R_{YB}	251, 102, 144
Decimal	16475792
CIE _{Lab}	63.36, 60.38, 6.76
CIE _{LCh}	63, 60.755, 6.387
Yxy	32.0256, 0.4444, 0.2871
Android (android.graphics.Color)	4294665872 (0xFFFB6690)
YUV	151.3390, -3.6181, 87.4027
Hunter-Lab	56.5912, 57.3164, 8.2307

Details

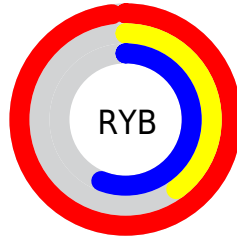
The Android color **4294665872** is a light color, and the websafe version is hex **FF6699**. A complement of this color would be **4284939217**, and the grayscale version is **4288124823**.

A 20% lighter version of the original color is **4294942662**, and **4290652766** is the 20% darker color. If you saturate the color by 10%, you get **4294659454**, and if you desaturate by 10%, it is **4294672290**.

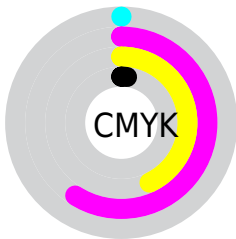
Distribution



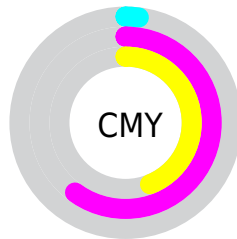
- Red (98%)
- Green (40%)
- Blue (56%)



- Red (98%)
- Yellow (40%)
- Blue (56%)



- Cyan (0%)
- Magenta (59%)
- Yellow (43%)
- Black (2%)



- Cyan (2%)
- Magenta (60%)
- Yellow (44%)

Brightness & Saturation Gradients

These gradients show how the Android color 4294665872 changes by changing the brightness by 10 percent. The first figure shows a shift by +10% for each color and the second figure -10%.

Similar to the brightness gradients but the following saturation gradients show a change of the Android color 4294665872 by changing the saturation by 10% instead.



4294665872



4294665872

4294967295



4292626806



4294942662



4290652766



4294949858



4288675910



4294957310



4286709808



4294964991



4284809244



4283039746



4281073665



4278190080



4294665872



4294665872

 4294659454

 4294672290

 4294653036

 4294678708

 4294646618

 4294685126

 4294640200

 4294691544

 4294639687

 4294698218

 4294704636

 4294705151

Harmonies

Analogous

The Analogous color harmony consists of three colors that are next to each other on the color wheel.



4293161158



4294665872



4294275420

Triad

The Triadic color harmony groups three colors that are evenly spaced from another and form a triangle on the color wheel.



4294665872



4285704252



4278234108

Complementary

The Complementary color scheme is a pair of colors which are on the opposite of each other on the color wheel.



4294665872



4284939217

Split Complementary

Split-complementary colors differ from the complementary color scheme. The scheme consists of three colors, the original color and two neighbors of the complement color.



4278235864



4294665872



4278235244

Square

The Square scheme is like the rectangle color scheme, but the four colors are evenly spaced on the color wheel.



4294665872



4289436449



4278236068



4281572607

Rectangle

The Rectangle color scheme consists of four colors that form a rectangle on the color wheel.



4294665872



4293099327



4278236068



4278234867

Sweetspot

The Sweet Spot groups the original color and five complimentary colors.



4294665872



4294955486



4291913467



4286604139



4278190080



4286611584

Same Dimension

The Same Dimension uses a secret algorithm to generate beautiful new colors.



4294665872



4294920829



4294674022



4286410868



4290576437



4282187793

Inverse Universe

The Inverse Universe completely reimagines the original color for something new.



4294665872



4294920829



4284931067



4286410868



4290576437



4282187793

Previews

White Background



This preview shows how the Android color 4294665872 looks on a white background.

Color Contrast Check

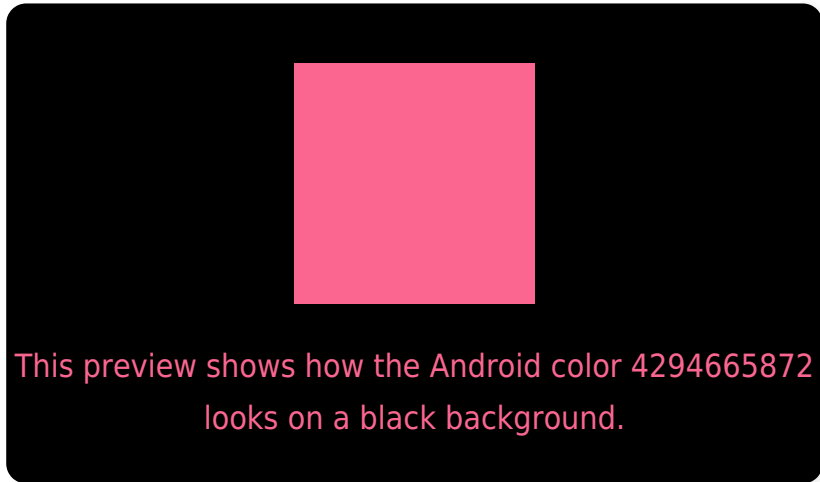
Large Text (above 18pt) WCAG AA × Fail

Any Text WCAG AA × Fail

Large Text (above 18pt) WCAG AAA × Fail

Any Text WCAG AAA × Fail

Black Background



Color Contrast Check

Large Text (above 18pt) WCAG AA ✓ Pass

Any Text WCAG AA ✓ Pass

Large Text (above 18pt) WCAG AAA ✓ Pass

Any Text WCAG AAA ✓ Pass

If you want to check with other color combinations, try the [Color Contrast Checker](#).

Android 4294665872 Background



This preview shows how black text looks on a background with the Android color 4294665872.



This preview shows how white text looks on a background with the Android color 4294665872.

Color Blindness Simulation

Color vision deficiency is a very complex topic, and I could not describe the different causes any better than Wikipedia does, so if you want to learn more, you should check out their [article about color blindness](#).

Dichromacy

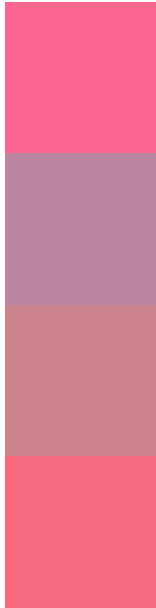


Original Color
4294665872

Protanopia
4288125357

Deuteranopia
4289696905

Trichromacy



Original Color
4294665872

Protanomaly
4290479778

Deuteranomaly
4291527564

Tritanomaly
4294601342

Monochromacy



Original Color
4294665872

Achromatopsia
4288124823

Achromatomaly
4290479508

CSS Examples

Text

The CSS property to change the color of the text to Android 4294665872 is called "color". The color property can be set on classes, ids or directly on the HTML element.

This example shows how text in the color `rgb(251, 102, 144)` looks like.

```
.text, #text, p{  
    color:rgb(251, 102, 144)  
}
```

If you want to add a text shadow in that color use the text-shadow property, you can generate a text shadow directly with our [CSS Text Shadow Generator](#).

Here you see how black text with a 4 pixel rgb(251, 102, 144) colored shadow looks like.

```
.shadow{ text-shadow: 4px 4px 2px rgb(251, 102, 144) }
```

Border

The CSS property to change the border of an element to Android 4294665872 is called "border". The border property can be set on classes, ids or directly on the HTML element.

This example shows the color as border, it can be applied via the CSS property "border" or "border-color".

```
.border, #border, table{ border:4px solid rgb(251, 102, 144) }
```

If only the border color should be changed use the property `border-color`.

```
.border{ border-color:rgb(251, 102, 144) }
```

If you want to add a box shadow in that color use:

Here you see how a box with a 4 pixel `rgb(251, 102, 144)` colored shadow looks like.

```
.boxshadow{ -moz-box-shadow:4px 4px 4px  
4px rgb(251, 102, 144); -webkit-box-  
shadow:4px 4px 4px 4px rgb(251, 102, 144);  
box-shadow:4px 4px 4px 4px rgb(251, 102,  
144) }
```

Background

The CSS property to change the background color of an element to Android 4294665872 is called "background". The background property can be set on classes, ids or directly on the HTML element.

```
.background, #background, body{  
background: rgb(251, 102, 144) }
```

If only the background color should be changed can be used:

```
.background{ background-color: rgb(251,  
102, 144) }
```

This example shows the color as background, it is applied via the CSS property "background".

To optimize and compress your CSS code, you can use our [online CSS compressor and optimizer](#) based on csstidy. If you want to create a linear or radial gradient as background or border, check our [CSS Gradient Generator](#).

Hey! You found this booklet interesting? Support Converting Colors with the new Membership Option!

The pro membership hides all ads, plus gives you double the colors in the color bucket, and more awesome pro features!

[Learn more, Memberships starting at \\$2.50/m!](#)

**Follow me
on Twitter!**

@ConvertingColor