

Converting Colors

Android(4294667650)

Have a look what the booklet for
Android(4294667650) contains.

Android(4294667650)	3
<i>Conversions</i>	4
<i>Details</i>	6
<i>Harmonies</i>	11
<i>Previews</i>	23
<i>Color Blindness Simulation</i>	26
<i>CSS Examples</i>	29

Color

Android(4294667650)

Conversions

Conversions Part 1

Format	Color
Hex	FB6D82
RGB	251, 109, 130
RGB Percent	98%, 43%, 51%
CMY	0.0157, 0.5725, 0.4902
CMYK	0.00, 0.57, 0.48, 0.02
HSL	351°, 95%, 71%
HSV	351°, 57%, 98%
XYZ	49.2816, 33.0582, 24.9025
YIQ	153.8520, 77.8910, 36.6350

Conversions

Conversions Part 2

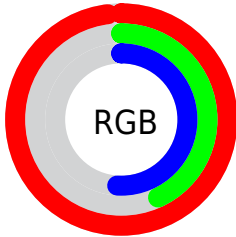
Format	Color
R_{YB}	251, 109, 130
Decimal	16477570
CIE _{Lab}	64.21, 55.96, 15.98
CIE _{LCh}	64, 58.198, 15.938
Yxy	33.0582, 0.4595, 0.3083
Android (android.graphics.Color)	4294667650 (0xFFFB6D82)
YUV	153.8520, -11.7590, 85.1988
Hunter-Lab	57.4963, 52.3786, 14.5680

Details

The Android color **4294667650** is a light color, and the websafe version is hex **FF6699**. A complement of this color would be **4285397990**, and the grayscale version is **4288322202**.

A 20% lighter version of the original color is **4294944183**, and **4290655313** is the 20% darker color. If you saturate the color by 10%, you get **4294661229**, and if you desaturate by 10%, it is **4294674071**.

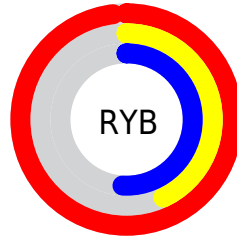
Distribution



Red (98%)

Green (43%)

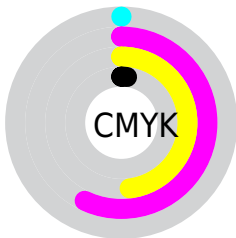
Blue (51%)



Red (98%)

Yellow (43%)

Blue (51%)

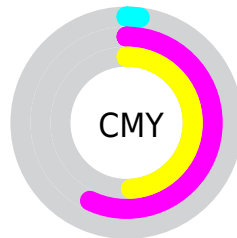


Cyan (0%)

Magenta (57%)

Yellow (48%)

Black (2%)



Cyan (2%)

Magenta (57%)

Yellow (49%)

Brightness & Saturation Gradients

These gradients show how the Android color 4294667650 changes by changing the brightness by 10 percent. The first figure shows a shift by +10% for each color and the second figure -10%.

Similar to the brightness gradients but the following saturation gradients show a change of the Android color 4294667650 by changing the saturation by 10% instead.

 4294667650

 4294667650

4294967295

 4292628841

 4294944183

 4290655313

 4294951378

 4288679994

 4294958831

 4286709797

 4294966527

 4284809233

 4282908673

 4281008129

 4278190080

 4294667650

 4294667650

 4294661229

 4294674071

 4294654807

 4294680493

 4294648386

 4294686914

 4294641964

 4294693336

 4294639653

 4294699757

 4294705151

Harmonies

Analogous

The Analogous color harmony consists of three colors that are next to each other on the color wheel.



4293816502



4294667650



4293753939

Triad

The Triadic color harmony groups three colors that are evenly spaced from another and form a triangle on the color wheel.



4294667650



4284591439



4278233343

Complementary

The Complementary color scheme is a pair of colors which are on the opposite of each other on the color wheel.



4294667650



4285397990

Split Complementary

Split-complementary colors differ from the complementary color scheme. The scheme consists of three colors, the original color and two neighbors of the complement color.



4278235877



4294667650



4278236033

Square

The Square scheme is like the rectangle color scheme, but the four colors are evenly spaced on the color wheel.



4294667650



4288520751



4278236599



4285503743

Rectangle

The Rectangle color scheme consists of four colors that form a rectangle on the color wheel.



4294667650



4292446522



4278236599



4278234362

Sweetspot

The Sweet Spot groups the original color and five complimentary colors.



4294667650



4294956250



4293291515



4286604906



4278190080



4286611584

Same Dimension

The Same Dimension uses a secret algorithm to generate beautiful new colors.



4294667650



4294922859



4294680429



4286410866



4290576412



4282187785

Inverse Universe

The Inverse Universe completely reimagines the original color for something new.



4294667650



4294922859



4285385211



4286410866



4290576412



4282187785

Previews

White Background



This preview shows how the Android color 4294667650 looks on a white background.

Color Contrast Check

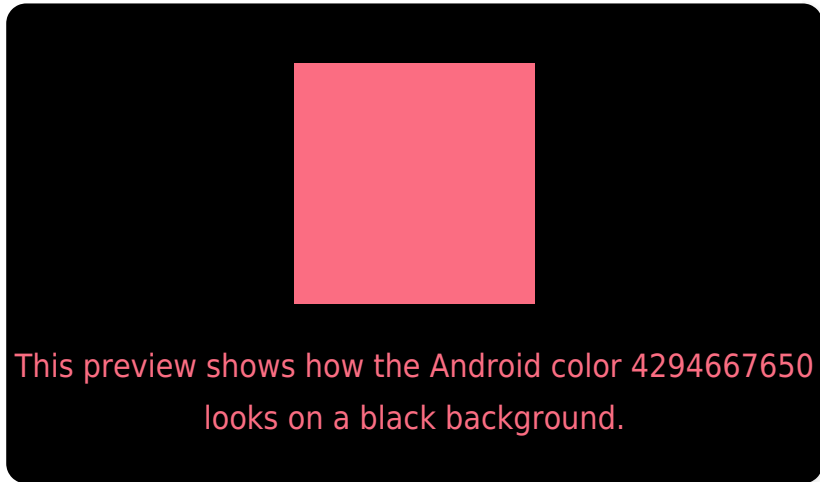
Large Text (above 18pt) WCAG AA × Fail

Any Text WCAG AA × Fail

Large Text (above 18pt) WCAG AAA × Fail

Any Text WCAG AAA × Fail

Black Background



Color Contrast Check

Large Text (above 18pt) WCAG AA ✓ Pass

Any Text WCAG AA ✓ Pass

Large Text (above 18pt) WCAG AAA ✓ Pass

Any Text WCAG AAA ✓ Pass

If you want to check with other color combinations, try the [Color Contrast Checker](#).

Android 4294667650 Background



This preview shows how black text looks on a background with the Android color 4294667650.

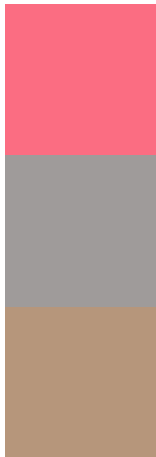


This preview shows how white text looks on a background with the Android color 4294667650.

Color Blindness Simulation

Color vision deficiency is a very complex topic, and I could not describe the different causes any better than Wikipedia does, so if you want to learn more, you should check out their [article about color blindness](#).


Dichromacy



Original Color
4294667650

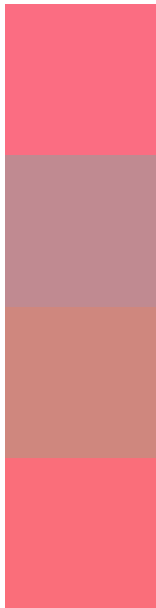
Protanopia
4288650138

Deuteranopia
4290156155



Tritanopia
4294602614

Trichromacy



Original Color
4294667650

Protanomaly
4290808465

Deuteranomaly
4291790718

Tritanomaly
4294602362

Monochromacy



Original Color
4294667650

Achromatopsia
4288322202

Achromatomaly
4290611857

CSS Examples

Text

The CSS property to change the color of the text to Android 4294667650 is called "color". The color property can be set on classes, ids or directly on the HTML element.

This example shows how text in the color `rgb(251, 109, 130)` looks like.

```
.text, #text, p{  
    color:rgb(251, 109, 130)  
}
```

If you want to add a text shadow in that color use the text-shadow property, you can generate a text shadow directly with our [CSS Text Shadow Generator](#).

Here you see how black text with a 4 pixel rgb(251, 109, 130) colored shadow looks like.

```
.shadow{ text-shadow: 4px 4px 2px rgb(251, 109, 130) }
```

Border

The CSS property to change the border of an element to Android 4294667650 is called "border". The border property can be set on classes, ids or directly on the HTML element.

This example shows the color as border, it can be applied via the CSS property "border" or "border-color".

```
.border, #border, table{ border:4px solid rgb(251, 109, 130) }
```

If only the border color should be changed use the property `border-color`.

```
.border{ border-color:rgb(251, 109, 130) }
```

If you want to add a box shadow in that color use:

Here you see how a box with a 4 pixel `rgb(251, 109, 130)` colored shadow looks like.

```
.boxshadow{ -moz-box-shadow:4px 4px 4px  
4px rgb(251, 109, 130); -webkit-box-  
shadow:4px 4px 4px 4px rgb(251, 109, 130);  
box-shadow:4px 4px 4px 4px rgb(251, 109,  
130) }
```

Background

The CSS property to change the background color of an element to Android 4294667650 is called "background". The background property can be set on classes, ids or directly on the HTML element.

```
.background, #background, body{  
background: rgb(251, 109, 130) }
```

If only the background color should be changed can be used:

```
.background{ background-color: rgb(251,  
109, 130) }
```

This example shows the color as background, it is applied via the CSS property "background".

To optimize and compress your CSS code, you can use our [online CSS compressor and optimizer](#) based on csstidy. If you want to create a linear or radial gradient as background or border, check our [CSS Gradient Generator](#).

Hey! You found this booklet interesting? Support Converting Colors with the new Membership Option!

The pro membership hides all ads, plus gives you double the colors in the color bucket, and more awesome pro features!

[Learn more, Memberships starting at \\$2.50/m!](#)

**Follow me
on Twitter!**

@ConvertingColor