

Converting Colors

Android(4294668439)

Have a look what the booklet for
Android(4294668439) contains.

Android(4294668439)	3
<i>Conversions</i>	4
<i>Details</i>	6
<i>Harmonies</i>	11
<i>Previews</i>	23
<i>Color Blindness Simulation</i>	26
<i>CSS Examples</i>	29

Color

Android(4294668439)

Conversions

Conversions Part 1

Format	Color
Hex	FB7097
RGB	251, 112, 151
RGB Percent	98%, 44%, 59%
CMY	0.0157, 0.5608, 0.4078
CMYK	0.00, 0.55, 0.40, 0.02
HSL	343°, 95%, 71%
HSV	343°, 55%, 98%
XYZ	51.1637, 34.3319, 33.2083
YIQ	158.0070, 70.3250, 41.5970

Conversions

Conversions Part 2

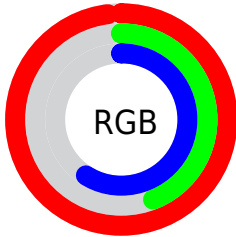
Format	Color
R_{YB}	251, 112, 151
Decimal	16478359
CIE Lab	65.23, 56.63, 5.42
CIE LCh	65, 56.885, 5.466
Yxy	34.3319, 0.4310, 0.2892
Android (android.graphics.Color)	4294668439 (0xFFFB7097)
YUV	158.0070, -3.4545, 81.5549
Hunter-Lab	58.5935, 53.3274, 7.4124

Details

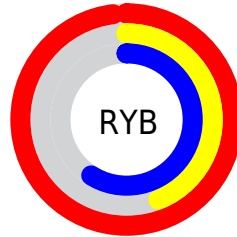
The Android color **4294668439** is a light color, and the websafe version is hex **FF6699**. A complement of this color would be **4285594580**, and the grayscale version is **4288585374**.

A 20% lighter version of the original color is **4294944973**, and **4290656100** is the 20% darker color. If you saturate the color by 10%, you get **4294662021**, and if you desaturate by 10%, it is **4294674857**.

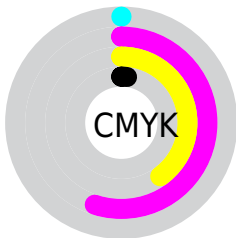
Distribution



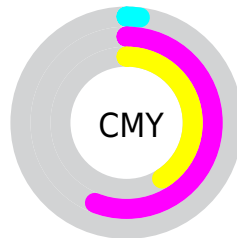
- Red (98%)
- Green (44%)
- Blue (59%)



- Red (98%)
- Yellow (44%)
- Blue (59%)



- Cyan (0%)
- Magenta (55%)
- Yellow (40%)
- Black (2%)



- Cyan (2%)
- Magenta (56%)
- Yellow (41%)

Brightness & Saturation Gradients

These gradients show how the Android color 4294668439 changes by changing the brightness by 10 percent. The first figure shows a shift by +10% for each color and the second figure -10%.

Similar to the brightness gradients but the following saturation gradients show a change of the Android color 4294668439 by changing the saturation by 10% instead.

 4294668439

 4294668439

4294967295

 4292629629

 4294944973

 4290656100

 4294952425

 4288746829

 4294959871

 4286775350

 4284940321

 4283105289

 4281270274

 4278190080

 4294668439

 4294668439

 4294662021

 4294674857

 4294655603

 4294681275

 4294649185

 4294687693

 4294642767

 4294694111

 4294639686

 4294700785

 4294705151

Harmonies

Analogous

The Analogous color harmony consists of three colors that are next to each other on the color wheel.



4293163466



4294668439



4294343014

Triad

The Triadic color harmony groups three colors that are evenly spaced from another and form a triangle on the color wheel.



4294668439



4286360646



4278235130

Complementary

The Complementary color scheme is a pair of colors which are on the opposite of each other on the color wheel.



4294668439



4285594580

Split Complementary

Split-complementary colors differ from the complementary color scheme. The scheme consists of three colors, the original color and two neighbors of the complement color.



4278236888



4294668439



4280726642

Square

The Square scheme is like the rectangle color scheme, but the four colors are evenly spaced on the color wheel.



4294668439



4289830705



4278237094



4282884607

Rectangle

The Rectangle color scheme consists of four colors that form a rectangle on the color wheel.



4294668439



4293297739



4278237094



4278235889

Sweetspot

The Sweet Spot groups the original color and five complimentary colors.



4294668439



4294956256



4292112635



4286604909



4278190080



4286611584

Same Dimension

The Same Dimension uses a secret algorithm to generate beautiful new colors.



4294668439



4294924166



4294676080



4286410868



4290576437



4282187793

Inverse Universe

The Inverse Universe completely reimagines the original color for something new.



4294668439



4294924166



4285586939



4286410868



4290576437



4282187793

Previews

White Background



This preview shows how the Android color 4294668439 looks on a white background.

Color Contrast Check

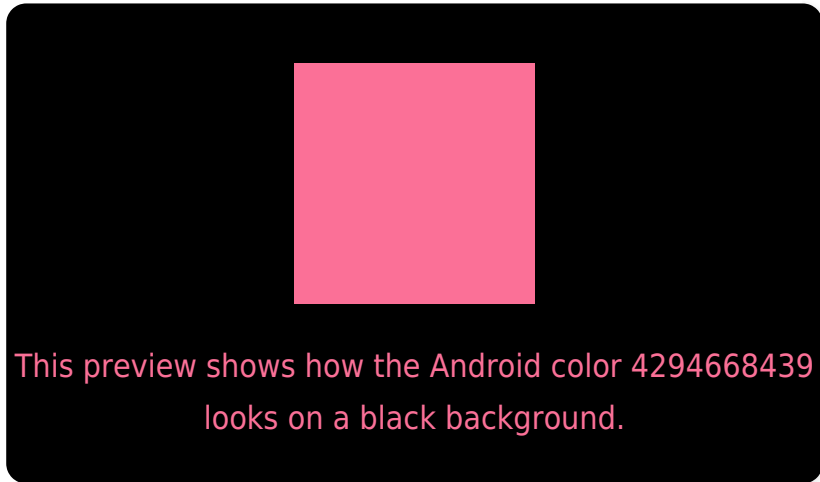
Large Text (above 18pt) WCAG AA × Fail

Any Text WCAG AA × Fail

Large Text (above 18pt) WCAG AAA × Fail

Any Text WCAG AAA × Fail

Black Background



Color Contrast Check

Large Text (above 18pt) WCAG AA ✓ Pass

Any Text WCAG AA ✓ Pass

Large Text (above 18pt) WCAG AAA ✓ Pass

Any Text WCAG AAA ✓ Pass

If you want to check with other color combinations, try the [Color Contrast Checker](#).

Android 4294668439 Background



This preview shows how black text looks on a background with the Android color 4294668439.




This preview shows how white text looks on a background with the Android color 4294668439.

Color Blindness Simulation

Color vision deficiency is a very complex topic, and I could not describe the different causes any better than Wikipedia does, so if you want to learn more, you should check out their [article about color blindness](#).

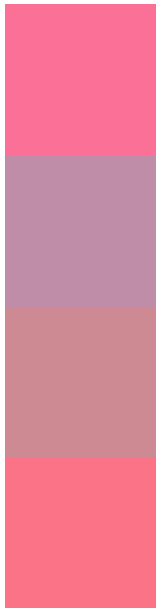
Dichromacy





Tritanopia
4294538621

Trichromacy



Original Color
4294668439

Protanomaly
4290743720

Deuteranomaly
4291660435

Tritanomaly
4294603654

Monochromacy



Original Color
4294668439

Achromatopsia
4288585374

Achromatomaly
4290809243

CSS Examples

Text

The CSS property to change the color of the text to Android 4294668439 is called "color". The color property can be set on classes, ids or directly on the HTML element.

This example shows how text in the color `rgb(251, 112, 151)` looks like.

```
.text, #text, p{  
    color:rgb(251, 112, 151)  
}
```

If you want to add a text shadow in that color use the text-shadow property, you can generate a text shadow directly with our [CSS Text Shadow Generator](#).

Here you see how black text with a 4 pixel rgb(251, 112, 151) colored shadow looks like.

```
.shadow{ text-shadow: 4px 4px 2px rgb(251, 112, 151) }
```

Border

The CSS property to change the border of an element to Android 4294668439 is called "border". The border property can be set on classes, ids or directly on the HTML element.

This example shows the color as border, it can be applied via the CSS property "border" or "border-color".

```
.border, #border, table{ border:4px solid rgb(251, 112, 151) }
```

If only the border color should be changed use the property `border-color`.

```
.border{ border-color:rgb(251, 112, 151) }
```

If you want to add a box shadow in that color use:

Here you see how a box with a 4 pixel `rgb(251, 112, 151)` colored shadow looks like.

```
.boxshadow{ -moz-box-shadow:4px 4px 4px  
4px rgb(251, 112, 151); -webkit-box-  
shadow:4px 4px 4px 4px rgb(251, 112, 151);  
box-shadow:4px 4px 4px 4px rgb(251, 112,  
151) }
```

Background

The CSS property to change the background color of an element to Android 4294668439 is called "background". The background property can be set on classes, ids or directly on the HTML element.

```
.background, #background, body{  
background: rgb(251, 112, 151) }
```

If only the background color should be changed can be used:

```
.background{ background-color: rgb(251,  
112, 151) }
```

This example shows the color as background, it is applied via the CSS property "background".

To optimize and compress your CSS code, you can use our [online CSS compressor and optimizer](#) based on csstidy. If you want to create a linear or radial gradient as background or border, check our [CSS Gradient Generator](#).

Hey! You found this booklet interesting? Support Converting Colors with the new Membership Option!

The pro membership hides all ads, plus gives you double the colors in the color bucket, and more awesome pro features!

[Learn more, Memberships starting at \\$2.50/m!](#)

**Follow me
on Twitter!**

@ConvertingColor