

Converting Colors

Android(4294673053)

Have a look what the booklet for
Android(4294673053) contains.

Android(4294673053)	3
<i>Conversions</i>	4
<i>Details</i>	6
<i>Harmonies</i>	11
<i>Previews</i>	23
<i>Color Blindness Simulation</i>	26
<i>CSS Examples</i>	29

Color

Android(4294673053)

Conversions

Conversions Part 1

Format	Color
Hex	FB829D
RGB	251, 130, 157
RGB Percent	98%, 51%, 62%
CMY	0.0157, 0.4902, 0.3843
CMYK	0.00, 0.48, 0.37, 0.02
HSL	347°, 94%, 75%
HSV	347°, 48%, 98%
XYZ	53.8521, 38.9088, 36.5701
YIQ	169.2570, 63.4490, 34.0490

Conversions

Conversions Part 2

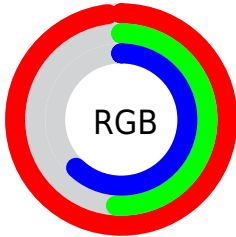
Format	Color
RYB	251, 130, 157
Decimal	16482973
CIELab	68.69, 48.72, 6.99
CIElCh	69, 49.214, 8.161
Yxy	38.9088, 0.4164, 0.3008
Android (android.graphics.Color)	4294673053 (0xFFFB829D)
YUV	169.2570, -6.0427, 71.6886
Hunter-Lab	62.3769, 44.9454, 8.9035

Details

The Android color **4294673053** is a light color, and the websafe version is hex **FF6699**. A complement of this color would be **4286774240**, and the grayscale version is **4289309097**.

A 20% lighter version of the original color is **4294949331**, and **4290727018** is the 20% darker color. If you saturate the color by 10%, you get **4294666634**, and if you desaturate by 10%, it is **4294679472**.

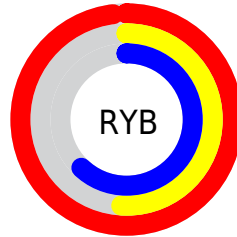
Distribution



Red (98%)

Green (51%)

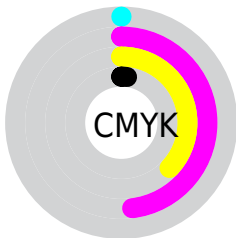
Blue (62%)



Red (98%)

Yellow (51%)

Blue (62%)

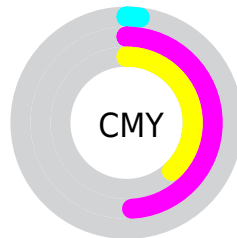


Cyan (0%)

Magenta (48%)

Yellow (37%)

Black (2%)



Cyan (2%)

Magenta (49%)

Yellow (38%)

Brightness & Saturation Gradients

These gradients show how the Android color 4294673053 changes by changing the brightness by 10 percent. The first figure shows a shift by +10% for each color and the second figure -10%.

Similar to the brightness gradients but the following saturation gradients show a change of the Android color 4294673053 by changing the saturation by 10% instead.

 4294673053

 4294673053

4294967295

 4292700035

 4294949331

 4290727018

 4294956784

 4288819538

 4294964223

 4286910779

 4285071398

 4283236369

 4281597954

 4278190080

 4294673053

 4294673053

 4294666634

 4294679472

 4294660214

 4294685892

 4294653795

 4294692311

 4294647375

 4294698731

 4294640700

 4294705150

 4294639672

 4294705151

Harmonies

Analogous

The Analogous color harmony consists of three colors that are next to each other on the color wheel.



4293429450



4294673053



4294347379

Triad

The Triadic color harmony groups three colors that are evenly spaced from another and form a triangle on the color wheel.



4294673053



4287083871



4278236665

Complementary

The Complementary color scheme is a pair of colors which are on the opposite of each other on the color wheel.



4294673053



4286774240

Split Complementary

Split-complementary colors differ from the complementary color scheme. The scheme consists of three colors, the original color and two neighbors of the complement color.



4278238429



4294673053



4282891397

Square

The Square scheme is like the rectangle color scheme, but the four colors are evenly spaced on the color wheel.



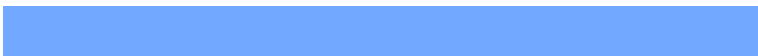
4294673053



4290160972



4278238899



4285704447

Rectangle

The Rectangle color scheme consists of four colors that form a rectangle on the color wheel.



4294673053



4293366877



4278238899



4278237426

Sweetspot

The Sweet Spot groups the original color and five complimentary colors.



4294673053



4294958051



4292838139



4286605935



4278190080



4286611584

Same Dimension

The Same Dimension uses a secret algorithm to generate beautiful new colors.



4294673053



4294929292



4294681218



4286410867



4290576426



4282187790

Inverse Universe

The Inverse Universe completely reimagines the original color for something new.



4294673053



4294929292



4286766075



4286410867



4290576426



4282187790

Previews

White Background



This preview shows how the Android color 4294673053 looks on a white background.

Color Contrast Check

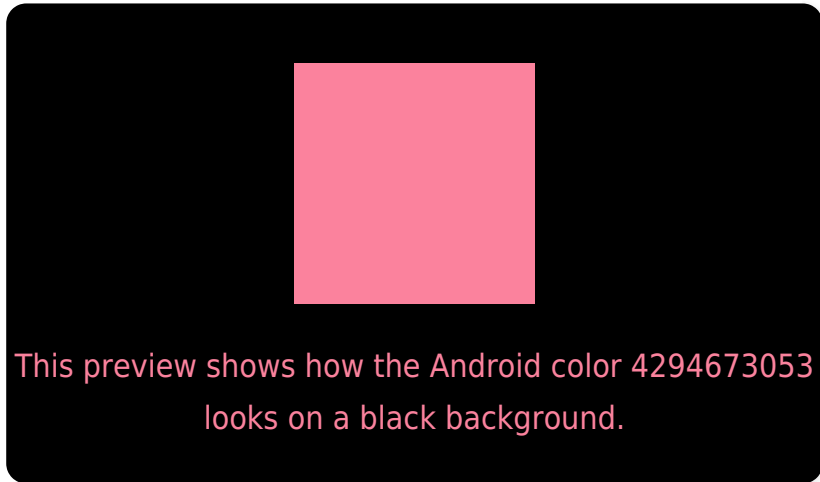
Large Text (above 18pt) WCAG AA × Fail

Any Text WCAG AA × Fail

Large Text (above 18pt) WCAG AAA × Fail

Any Text WCAG AAA × Fail

Black Background



Color Contrast Check

Large Text (above 18pt) WCAG AA ✓ Pass

Any Text WCAG AA ✓ Pass

Large Text (above 18pt) WCAG AAA ✓ Pass

Any Text WCAG AAA ✓ Pass

If you want to check with other color combinations, try the [Color Contrast Checker](#).

Android 4294673053 Background



This preview shows how black text looks on a background with the Android color 4294673053.



This preview shows how white text looks on a background with the Android color 4294673053.

Color Blindness Simulation

Color vision deficiency is a very complex topic, and I could not describe the different causes any better than Wikipedia does, so if you want to learn more, you should check out their [article about color blindness](#).

Dichromacy

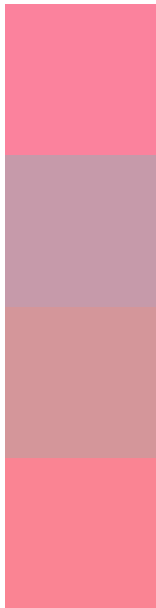


Original Color
4294673053

Protanopia
4289243058

Deuteranopia
4290683544

Trichromacy



Original Color
4294673053

Protanomaly
4291205802

Deuteranomaly
4292122266

Tritanomaly
4294608019

Monochromacy



Original Color
4294673053

Achromatopsia
4289309097

Achromatomaly
4291271589

CSS Examples

Text

The CSS property to change the color of the text to Android 4294673053 is called "color". The color property can be set on classes, ids or directly on the HTML element.

This example shows how text in the color `rgb(251, 130, 157)` looks like.

```
.text, #text, p{  
    color:rgb(251, 130, 157)  
}
```

If you want to add a text shadow in that color use the text-shadow property, you can generate a text shadow directly with our [CSS Text Shadow Generator](#).

Here you see how black text with a 4 pixel rgb(251, 130, 157) colored shadow looks like.

```
.shadow{ text-shadow: 4px 4px 2px rgb(251, 130, 157) }
```

Border

The CSS property to change the border of an element to Android 4294673053 is called "border". The border property can be set on classes, ids or directly on the HTML element.

This example shows the color as border, it can be applied via the CSS property "border" or "border-color".

```
.border, #border, table{ border:4px solid rgb(251, 130, 157) }
```

If only the border color should be changed use the property `border-color`.

```
.border{ border-color:rgb(251, 130, 157) }
```

If you want to add a box shadow in that color use:

Here you see how a box with a 4 pixel `rgb(251, 130, 157)` colored shadow looks like.

```
.boxshadow{ -moz-box-shadow:4px 4px 4px  
4px rgb(251, 130, 157); -webkit-box-  
shadow:4px 4px 4px 4px rgb(251, 130, 157);  
box-shadow:4px 4px 4px 4px rgb(251, 130,  
157) }
```

Background

The CSS property to change the background color of an element to Android 4294673053 is called "background". The background property can be set on classes, ids or directly on the HTML element.

```
.background, #background, body{  
background: rgb(251, 130, 157) }
```

If only the background color should be changed can be used:

```
.background{ background-color: rgb(251,  
130, 157) }
```

This example shows the color as background, it is applied via the CSS property "background".

To optimize and compress your CSS code, you can use our [online CSS compressor and optimizer](#) based on csstidy. If you want to create a linear or radial gradient as background or border, check our [CSS Gradient Generator](#).

Hey! You found this booklet interesting? Support Converting Colors with the new Membership Option!

The pro membership hides all ads, plus gives you double the colors in the color bucket, and more awesome pro features!

[Learn more, Memberships starting at \\$2.50/m!](#)

**Follow me
on Twitter!**

@ConvertingColor